

# Lancaster Co. Livestock Market Auctions

## Lancaster Livestock Auction

Monday, March 9, 1992  
Lancaster, Pa.

Cattle Calves Hogs Sheep Goats

Monday's Auction				
1177	54	266	1087	219
Last Monday's Auction				
1093	71	171	1108	361
Last Year's Auction				
970	64	281	1486	421

CATTLE: Slaughter steers weak to 50 lower, instances 1.00 lower on Choice; slaughter heifers weak to 50 lower; cows steady; bullocks steady; bulls mostly steady. Supply included 67% slaughter steers, 15% slaughter heifers, 10% cows, with the balance bulls.

SLAUGHTER STEERS: Choice 2-4 1150-1500 lb 73.50-76.10, few 76.25-76.60; few High Choice and Prime 2-4 1275-1400 lb 76.50-77.60, one lot 78.50; couple lots Choice mostly 3 1500-1575 lb 72.50-72.75; Select and low Choice 2-3 1100-1550 lb 70.75-73.75; few Select 2-3 1150-1350 lb 69.00-70.50.

HOLSTEINS: Choice 1250-1525 lb 63.00-67.50; high Choice and Prime 1350-1600 lb 67.50-68.75; Select 1150-1300 lb 60.00-62.25.

SLAUGHTER HEIFERS: Choice 2-3 1000-1250 lb 69.00-72.85; few Choice 2 1050-1275 lb 73.25-73.75; few Choice 2-3 900-935 lb 66.00-68.00; Select 2-3 975-1225 lb 65.75-69.00; Choice 1100-1500 lb Holsteins 61.25-62.50.

COWS: LO DRESSING BULK HI DRESSING Breaking Utility & Commercial 2-3 48.50-50.00 50.00-51.00 Cutter & Boning Utility 1-2 46.50-47.50 47.50-49.50 49.50-50.00 Canner & low Cutter 43.75-45.00 45.00-47.00.

BULLOCKS: Choice 2-3 1150-1350 lb 66.00-67.00, couple 70.00-70.25; Select 1-3 1000-1300 lb 63.75-65.75.

BULLS: Yield grade 1 1300-2375 lb 63.00-67.50, few 68.25-70.00, individual 2335 lb 73.00; Yield grade 2 1050-1550 lb 59.75-63.00.

CALVES: Small supply vealers steady; slaughter calves weak to 5.00 lower. Demand good for Holstein bulls to return to farm.

VEALERS: Couple high Good and low Choice 210-240 lb 80.00-100.00, 80-110 lb 78.00-90.00; Standard and low Good 60-85 lb 65.00-82.00.

SLAUGHTER CALVES: Good and Choice 285-425 lb 70.00-90.00.

RETURNED TO FARM: Small supply 90-125 lb Holstein bulls 130.00-160.00.

HOGS: Barrows and gilts 1.00-2.00 lower; sows steady.

BARROWS AND GILTS: US 1-3 210-245 lb 38.00-39.50. US 1 few 215-235 lb 40.50.

SOWS: US 1-3 300-500 lb 32.00-33.50. 500-650 lb 33.00-35.00.

BOARS: All weights 26.00-28.50.

SHEEP: Slaughter lambs 3.00-5.00 higher; slaughter ewes firm to 5.00 higher. Supply included 55% woolled lambs, 20% new crop lambs, with the balance slaughter ewes.

## Vintage Livestock Auction

Paradise, Pa.  
Tuesday, March 10, 1992  
Report Supplied by USDA

CATTLE 913...USDA... Supply included 42% slaughter steers and 49% cows with a balance bulls and heifers... Compared with Monday's market: Slaughter steers mostly steady instances higher on Choice and Prime 2-3. Heifers fully steady; Cows mostly steady instances 1.00 higher on Canner and Low Cutter; Bullocks not tested; Bulls steady. Choice and Prime 2-3 1100/1375 lbs. sl. steers 77.00-78.25. Choice 2-4, 1050/1450 lbs. 73.75-76.25, around 20 head 78.75-80.50, Choice 3 mostly 4 1150/1550 lbs. 69.50-74.00, few 1550/1650 lbs. 67.00-70.00, Select and Low Choice 2-3, 1050/1325 lbs. 70.50-74.50, few Select 2-3 1050/1325 lbs. 66.50-70.00, Choice Holsteins 1165/1400 lbs. 63.00-68.85, Choice 2-3 1000/1325 lbs. heifers 70.50-72.75, one lot 865 lbs. 67.85. Breaking Utility & Commercial sl. cows 2-3 47.75-50.00, few 51.00-53.00, Cutter & Boning Utility 1-2 bulk 47.75-50.00, high dressing 50.50-52.25, low dressing 46.00-47.50; Canner & Low Cutter, 44.75-45.00, low dressing 42.50-44.75. Yield Grade 1, 1500/2100 lbs. sl. bulls 61.75-65.75. No. 2, 1200/1400 lbs 58.00-60.25, couple 2300/2350 lbs. 55.00-56.00.

CALVES 741... Supply included 24 head over 145 lbs. with 10 going to slaughter 609 in graded sale of which 93% sold to return to farm...Vealers steady. 3 head Choice 185/210 lbs. 92.00-100.

00, 3 head Good 200/285 lbs. 85.00-87.00, Choice and Good 410/470 lbs. sl. calves 72.00-83.00, High Good and Low Choice 80/105 lbs. 82.00-89.00, few Standard 60/85 lbs. 70.00-80.00. Farm Calves: Holstein Bulls 25 head 120/125 lbs. 145.00, 85 head 110/115 lbs. 155.00-157.00, 115 head 100/105 lbs. 158.00-163.00, 50 head 95 lbs. 168.00-169.00, 50 head 85/90 lbs. 134.00-139.00, 15 head 80.00 lbs. 140.00, Small Frame 60 head 100/115 lbs, 130.00-138.00. 60 head 80/95 lbs. 117.00-124.00. 15 head Hol. Heifers 100/120 lbs. 185.00-195.00, 45 head 80/95 lbs. 145.00-155.00, 30 head Small Frame 80/110 lbs. 130.00-137.00.

SHEEP 5...No market test. - all per cwt. GOATS 6...Supply sold by the head at 46.00-53.00.

WOOLED LAMBS: Choice 90-110 lb 68.00-78.00; 60-85 lb 75.00-82.00.

SHORN LAMBS: Choice 90-115 lb with #1 Pelts 70.00-78.00, 120-140 lb 60.00-70.00.

NEW CROP LAMBS: Choice 20-60 lb 80.00-110.00; 60-80 lb 80.00-100.00; 80-100 lb 78.00-85.00.

SLAUGHTER EWES: Utility and Good 35.00-45.00; Yearlings and two-year olds 45.00-58.00.

GOATS: All goats sold by the head. Large Billies 65.00-85.00, couple 114.00-120.00; Large Nannies 50.00-60.00. Medium 45.00-55.00. Small, mainly kids, 25.00-35.00; few Fleishy 35.00-45.00.

## Lancaster Livestock Auction

Wednesday's market report has been discontinued until further notice because of insubstantial receipts.

## Aberdeen Sales Company, Inc.

Complete Auction & Appraisal Service  
Churchville, Md.

Wednesday, March 11, 1992

SLAUGHTER STEERS: MARKET STEADY. CHOICE 2-4 1100-1400 LBS. 73.00-78.00; SELECT & LOW CHOICE 1000-1500 LBS. 71.00-76.00; HOL. STEERS HI CHOICE & PRIME 1250-1400 LBS. 65.00-68.50; CHOICE 1200-1500 LBS. 64.00-67.00; SELECT ALL WEIGHTS 59.00-63.00.

SLAUGHTER HEIFERS: MARKET STEADY. CHOICE & PRIME 950-1300 LBS. 74.00-76.75; SELECT ALL WEIGHTS 900-1400 LBS. 66.00-71.00.

COWS: MARKET 2.00 HIGHER. BRK. UT. & COMM. 2-4 BULK 47.00-51.00; HI DRESSING 52.00-57.00; CUTTER & BON. UT. 48.50-51.50; HI DRESSING 52.00-54.00; CANNER & CUTTERS 43.00-48.50; LOW DRESSING 43.00-DOWN.

BULLS: MARKET STEADY. ALL WEIGHTS 1100-1900 LBS. 59.00-69.00.

VEAL CALVES: MARKET STEADY. CHOICE & PRIME 200-400 LBS. 86.00-97.00; HI GOOD & LOW CHOICE ALL WEIGHTS 70.00-88.00.

FARM CALVES: MARKET 12.00 HIGHER. HOL. BULLS 100-125 LBS. 125.00-162.00; HOL. BULLS 85-95 LBS. 105.00-143.00; HOL. HEIFER CALVES 100-120 LBS. 145.00-180.00; SMALL FRAME 70-105 LBS. 75.00-120.00; SLAUGHTER CALVES ALL WEIGHTS 66.00-79.00.

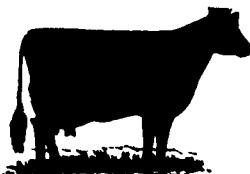
FEEDER CATTLE: MARKET 5.00 HIGHER. BULLS & STEERS 400-900 LBS. 65.00-97.00; HEIFERS 300-700 LBS. 58.00-86.00.

LAMBS: MARKET 7.00 HIGHER. CHOICE & PRIME 90-110 LBS. 62.00-75.00; LIGHTER LAMBS 85.00-115.00; EWES - HEAVY 25.00-31.00; EWES - LIGHT 30.00-42.00.

GOATS: MARKET STEADY. SMALL 18.00-30.00; MEDIUM 30.00-50.00; LARGE 75.00-105.00.

HOGS: MARKET STEADY. 210-250 LBS. 39.00-41.50; 255-300 LBS. 32.00-39.00; SOWS - HEAVY 31.00-34.00; SOWS - LIGHT 27.00-33.00;

BOARS ALL WEIGHTS 20.00-24.00.



## New Holland Livestock

March 12, 1992

Cattle Calves Sheep Goats

Today	1116	536	220	84
Last Thursday				
	1207	509	196	137
Last Year				
	1127	677	293	136

CATTLE: Slaughter steers generally steady; slaughter heifers scarce; cows firm to mostly 1.00 higher, instances 1.50 higher; bulls steady. Supply included 55% slaughter steers and 35% cows.

SLAUGHTER STEERS: Choice 2-4 1090-1450 lb 73.75-76.50, few 76.60-77.00; mixed Choice and Prime 2-4 1150-1425 lb 77.00-77.60; couple Choice 1200-1425 lb 78.00-78.75; Choice 3 to mostly 4 1200-1500 lb 70.00-74.00; Select and low Choice 2-3 1050-1450 lb 70.50-74.00; few Select 2-3 1050-1350 lb 68.50-71.00.

HOLSTEINS: Choice 1200-1600 lb 64.00-67.10, one lot 1135 lb 70.00; couple High Choice and Prime 1300-1600 lb 66.60-68.50.

SLAUGHTER HEIFERS: Choice 2-3 990-1225 lb 70.50-72.50; couple lots Select 2-3 835-900 lb 60.00-62.50.

COWS: LO DRESSING BULK HI DRESSING Breaking Utility & Commercial 2-3 48.50-51.00 51.50-54.00. Cutter and Boning Utility 1-2 46.00-47.75 47.75-51.50 51.50-53.50. Canner and low Cutter 42.50-45.50 45.50-48.50.

BULLS: Yield grade 1 1400-2050 lb 63.00-67.50; Yield grade 2 1150-1500 lb 60.75-63.00, few low dressing 57.00-59.50.

CALVES: Vealers steady. Demand good for Holstein bulls and heifers to return to farm. Supply included 50 head weighing from 140-450 lb, of which 30 head sold for slaughter.

VEALERS: Choice 215-370 lb 92.00-102.00; high Good and low Choice 250-415 lb 79.00-88.00, 80-110 lb 78.00-85.00; Standard and low Good 60-85 lb 70.00-80.00.

RETURNED TO FARM: Bulk 90-125 lb Holstein Bulls 135.00-167.00, few 167.00-183.00; small frame 95-115 lb 110.00-140.00, 80-90 lb 86.00-100.00, bulk 95-120 lb Holstein Heifers 130.00-175.00, few 180.00-207.00; small frame 95-115 lb 100.00-130.00, 70-90 lb 79.00-110.00.

SHEEP: Slaughter lambs steady; slaughter ewes fully steady. Supply included 55% New Crop Lambs, 40% slaughter ewes, with only about 5% woolled lambs.

NEW CROP LAMBS: Choice 20-50 lb 105.00-120.00, 50-80 lb 83.00-97.00; Good to low Choice 50-80 lb 75.00-85.00.

SLAUGHTER EWES: Utility and Good 34.00-45.00; Yearlings and two-year olds 45.00-54.00.

GOATS. All goats sold by the head Large 70.00-90.00, couple 98.00-107.00, Medium 47.00-70.00; Small, mainly kids, 35.00-45.00, few 28.00-35.00.

## Lancaster County Weekly

March 13, 1992

CATTLE CALVES

THIS WEEK	3500	1325
LAST WEEK	3261	1402
LAST YEAR	2997	1561

CATTLE: Slaughter steers weak to 50 lower; slaughter heifers steady, instances 50 lower; cows 1.00-2.00 higher; bullocks steady; bulls fully steady. Supply included 51% slaughter steers, 7% slaughter heifers, 27% cows, 4% bulls, with the balance feeders.

SLAUGHTER STEERS: Choice 2-4 1050-1450 lb 73.75-76.50, few 76.60-77.00; Choice and Prime 2-3 1100-1425 lb 77.00-78.25, around 20 head 78.75-80.50; Choice 3 to mostly 4 1150-1550 lb 70.00-74.00, few 1550-1650 lb 67.00-70.00; Select and low Choice 2-3 1050-1450 lb 70.50-74.50; few Select 2-3 1050-1350 lb 66.50-71.00.

HOLSTEINS: Choice 1200-1600 lb 63.00-67.50, one lot 1135 lb 70.00; High Choice and Prime 1300-1600 lb 66.60-68.75; Select 1150-1300 lb 60.00-62.25.

SLAUGHTER HEIFERS: Choice 2-3 990-1325 lb 69.00-72.85; few Choice 2 1050-1275 lb 73.25-73.75; few Choice 2-3 900-935 lb 66.00-68.00; Select 2-3 975-1225 lb 65.75-69.00, couple lots 835-900 lb 60.00-62.50.

COWS: LOW DRESSING BULK HIGH DRESSING Breaking Utility & Commercial 2-3 48.00-51.00 51.00-54.00. Cutter and Boning Utility 1-2 46.00-47.75 47.75-51.50 51.50-53.50. Canner and low Cutter 42.50-45.00 45.00-48.50.

BULLOCKS: Choice 2-3 1150-1350 lb 66.00-67.00, couple 70.00-70.25; Select 1-3 1000-1200 lb 63.75-65.75.

BULLS: Yield grade 1 1300-2300 lb 63.00-67.50, few 68.25-70.00; Yield grade 2 1050-1550 lb 59.75-63.00, few low dressing 57.00-59.50.

CALVES: Vealers steady, although very few over 125 lb on offer; slaughter calves weak to 5.00 lower. Demand good for Holstein bulls and heifers to return to farm.

VEALERS: Choice 185-370 lb 92.00-102.00; high Good and low Choice 200-415 lb 79.00-88.00, 80-110 lb 78.00-90.00; Standard and low Good 60-85 lb 65.00-82.00.

SLAUGHTER CALVES: Good and Choice 285-425 lb 70.00-90.00.

RETURNED TO FARM: Bulk 90-125 lb Holstein bulls 134.00-169.00, few 170.00-183.00; small frame 95-115 lb 110.00-140.00, 80-90 lb 86.00-100.00. Bulk 95-120 lb Holstein heifers 130.00-185.00, few 185.00-207.00; small frame 95-115 lb 100.00-137.00, 70-90 lb 79.00-110.00.



## Good's Hay

Leola, Pa.  
Wed., March 11, 1992  
Report Supplied by Auction  
TOTAL LOADS: 67.  
MIXED HAY: 100.00-159.00.  
ALFALFA: 98.00-150.00.  
TIMOTHY: 98.00-140.00.  
STRAW: 79.00-102.00.  
CORN: 90.00-103.00.  
GRASS: 111.00.  
OATS: 2.55 BU.

## LEBANON VALLEY LIVESTOCK MARKET, INC.

1 mile East of Fredericksburg along Rt. 22  
PHONE JONESTOWN 865-2881

Flea Market Auction every Tuesday at 12:30. Tools, Eggs, Produce, etc.  
Buyers & Sellers Welcome



Open 24 hours a day  
365 days a year  
(717)394-2611

### AUCTIONS

- MONDAY**  
9:00 A.M. - Slaughter Bulls, Heifers, Steers, Cows  
10:00 A.M. - Goats, Veal Calves, Lambs  
12 Noon - Slaughter Hogs
- WEDNESDAY**  
8:00 A.M. - Slaughter Hogs  
10:00 A.M. - Slaughter Bulls, Heifers, Steers, Cows  
11:00 A.M. - Veal Calves, Lambs
- FRIDAY**  
11:00 A.M. - Stocker and Feeder Cattle
- SATURDAY**  
8:00 A.M. - Slaughter Hogs

Next Feeder Cattle Sale  
Friday, March 20 - 11:00 A.M.

LANCASTER STOCKYARDS, INC.  
1147 Little Pike, Lancaster, Pennsylvania 17601  
Serving The Community For 96 Years

B&R CATTLE CO.  
RD 1, Marietta, PA 17547  
Office Phone: (717) 653-8164  
Specializing In Stockers & Feeders  
JOHN BOWMAN  
Ph (717) 653 5728  
RON RANCK  
Ph (717) 656-9849

HAY, STRAW & CORN  
— SALE —  
Please Note New Sale Time!  
Starting Jan. 3  
Sale Starts 10 AM  
Every Friday At 10 AM



## GREEN DRAGON MARKET & AUCTION

RD No. 4 Ephrata, Pa. 717-738-1117  
1 mile North of Ephrata on N. State St.

Out of State Buyers - Cash or Certified Check Only

## VINTAGE SALES STABLES, INC.

### SALE TUESDAYS

10:30 A.M.  
SLAUGHTER CATTLE AUCTION — STEERS, BULLS, HEIFERS, COWS, FEEDER CATTLE

7:30 P.M.  
CALVES, SHEEP, GOATS  
GET CALVES IN EARLY — OUR STATE GRADER STARTS AT 1:00 P.M.

L. ROBERT FRAME, SR., PRESIDENT  
GLENN S. FRAME, MGR.  
BUS (717) 442-4181 BUS (717) 768-8204  
HOME (215) 458-8518  
IRWIN MARTIN, FIELD REP.  
(717) 733-7434  
KENNETH E. HERSHEY, FIELD REP.  
(717) 442-4874

TRUCKING SERVICE  
AVAIL-LOCAL & LONG DISTANCE  
(RT. 30, 10 MILES EAST OF LANCASTER IN PARADISE, PA)

