

Farm Women Societies

Berks Society 3

The Berks County Society of Farm Women, Group 3, held its February meeting at the home of Sonya Moyer, Boyertown R.D.4. Ten members and two guests were present. A program on recycling, including a video entitled "The Rotten Truth", was presented.

Members and friends will travel

Lancaster Society 26

Lancaster Society of Farm Women #26 met on February 27, at the home of Joan Summy in Manheim. President Dorothy Hess conducted the meeting.

to the Dutch Apple Dinner Theater on March 19 to see "Nonsense". Terri Moore was proposed as a new member.

The next meeting will be at the home of Mary Bartholomew, Boyertown R.D.7. Lily Renninger will present a program on her recent visit back to Vietnam.

The March 26 meeting will be held at the home of Katherine Garber in Elizabethtown.

WASHINGTON, D.C. — More than 300 nutrition, public health, and government officials last week sampled one of the new low-fat ground beef products at the second annual Children and Nutrition conference sponsored by

Lancaster Society 15

Lancaster Farm Women Society #15 met at the home of president Arlene Maule, Quarryville, on February 20. Assisting hostesses were Sally Greenwald, Lois Myers and Betty Krieder. Members responded to roll call by telling about their "favorite subject in school." Minutes were read by the Sec. Trudy Bard. Devotions were given by the hostess and treasurer's report by Charlotte Stoner. Donation was given to Wesley Church toward two bone marrow tests. Martin Greenleaf Jr., a member of Solanco School Board of Directors, was present and told of the Solanco Schools. He said

Public Voice, a leading consumer advocacy group. A variety of low-fat ground beef products have been developed through beef checkoff-funded research.

The National Cattlemen's Association, in cooperation with the

the public schools belong to the public and are managed by local elected officials. He told of the school laws and answered questions pertaining to the schools.

Invitations were announced by the president to No. 15 to attend a luncheon by Society #8 at 12 Noon on April 8th at Mt. Joy, also invited to luncheon by #20 on April 2 at 12 Noon at the Quarryville Methodist Church.

Happy birthdays were sung for Feb. birthdays of Jean Krieder, Sadie Greenleaf and Alma Clendenin.

Farm Women #15 will present a \$500. - and 2 - \$50. scholarships to Solanco students.

Lanc. Co. Farm Women will host the State Spring Rally on May 27th at the Sheraton.

The March meeting of #15 will be held on the 19th at the home of Trudy Bard, Kirkwood, with program on "Restorations."

Beef Industry Council of the National Live Stock and Meat Board, sponsored the lunch to show health and nutrition leaders that the beef industry is committed to providing low-fat beef products to adults and children.

The low-fat ground beef provided at the conference uses oat bran and oat fiber and is one of the formulas selected by the U.S. Department of Agriculture for distribution in the National School Lunch program. Between 1987 and 1988, the beef industry, through the Beef Industry Council and the Beef Board, invested more than \$373,000 of producer check-off dollars in the development of low-fat ground beef technology.

"Low fat ground beef reflects the industry's commitment to providing beef that fits into a balanced, varied and healthy diet," Dr. Scott Barao, University of Maryland, told the conference attendees. "This product is especially exciting in terms of its appeal to children and its potential role in low-fat school lunch meals."

He added that U.S. beef producers are committed to producing a diversity of wholesome, lean and nutritious beef products for all consumers. These same producers, he said, are investing millions of their own dollars in research to accomplish this.



COME WITH US TO SEE AMERICA THE BEAUTIFUL Rural Route Tours

July 2 - July 17, 1992

A Few Of The Highlights:

Mt. Rushmore * Yellowstone National Park * Devil's Tower * Grand Teton National Park * Salt Lake City * Bryce And Zion Canyons * Grand Canyon * Durango * Mesa Verde National Park * Denver * Jackson Hole * Rocky Mountain National Park *

Call (717) 743-6911

Or Send For Free Itinerary
Mr. & Mrs. Russell Hummel
R.D. #5, Box 154
Sellingsgrove, PA 17870

SANDBLASTING AND SPRAY PAINTING WITH AERIAL LADDER EQUIPMENT



Farm Buildings — Feed Mills
Commercial - Industrial

HENRY K. FISHER, INC.

667 Hartman Station Road
Lancaster, PA 17601
717-393-6530

POLE BUILDINGS

By Sam Stoltzfus



Maintenance Free
Painted, Galvanized Roof & Siding
Pressure Treated Poles & Skirting

TALBOTVILLE CONSTRUCTION

Honey Brook, PA
(215) 273-2870 (215) 273-3495 Res.



Call
(215)
445-7897

We Build

With

**STYLE...
PRIDE...
PERFORMANCE.**

**COMMERCIAL BUILDINGS
SPECIALITY BUILDINGS
AGRICULTURAL BUILDINGS**



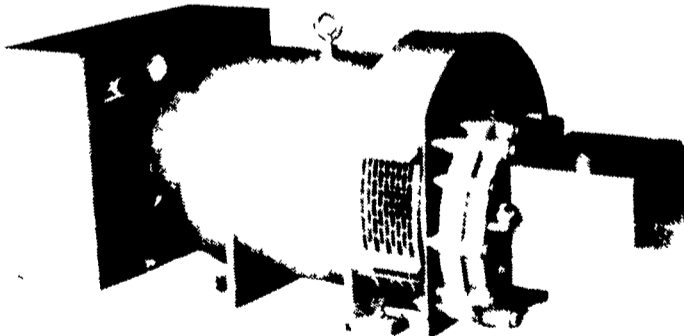
AND
HORSE BARN

Your only limitation
is your imagination!!

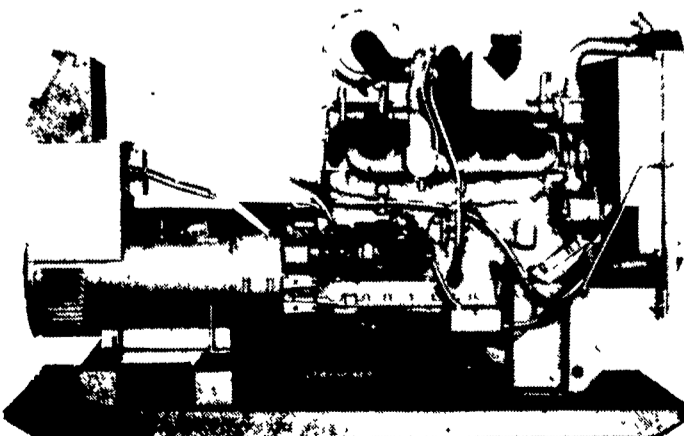
Did you know that we can span 200 feet without Interior Columns? Do you know why more People are using *Brecknock Builders* for their Imaginative Projects? Because the Building Systems We Design can cost less to build than conventional building methods. Learn about how *Brecknock* can help make your imaginative building a reality.

**FOR FREE CONSULTATION CALL THE PROFESSIONAL'S
(215) 445-7897**

STANDBY GENERATORS



PTO Driven



Automatic Systems

MAXI-POWER INC.

330 Fonderwhite Rd. Lebanon, PA 17042
24 Hr. Service (717) 273-4544 Radio Dispatch