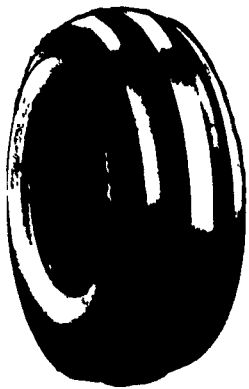


FARM TIRES AND FARM TIRE SERVICE

24 HOUR ON THE FARM SERVICE



We Ship UPS Daily

FRONT TRACTOR

3-RIB		
500-15	4 PLY	\$28
550-16	4 PLY	\$32
600-16	4 PLY	\$33
600-16	6 PLY	\$37
750-16	PLY	\$51
4 RIB		
14L-16.1	6 PLY	\$115
14L-16.1	10 PLY	\$138

The Only Tire Dealer You'll Ever Need



Firestone Farm Tires Available

ARMSTRONG REARS

11.2-24	4 PLY	\$130
14.9-24	4 PLY	\$190
16.9-24	6 PLY	\$258
13.6-28	4 PLY	\$185
15.5-38	8 PLY	\$280
18.4-38	6 PLY	\$425
20.8-38	8 PLY	\$645

FARM IMPLEMENT

9.5L-15SL	6 PLY	\$43
11L-15SL	10 PLY	\$55
12.5-16S	14 PLY	\$80

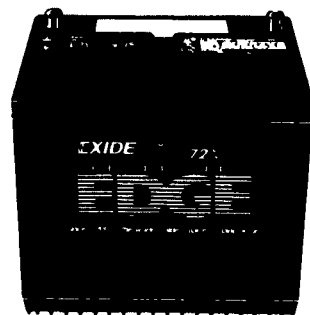
SKID LOADER TIRES

10-16.5	8 PLY	\$75
12-16.5	8 PLY	\$120

CONTRACTOR F-3

11L-16	10 PLY	\$89
11L-15	8 PLY	\$84

PASSENGER & TRUCK TIRES AT GREAT PRICES - CALL FOR QUOTES



Group #	CCA	Price
24	900	\$52
27	650	\$46
29NF	340	\$45
74	900	\$55
24/74 Comb	1000	\$60
31	950	\$74
1	625	\$32
4H	975	\$49

All Other Sizes In Stock At Similar Savings

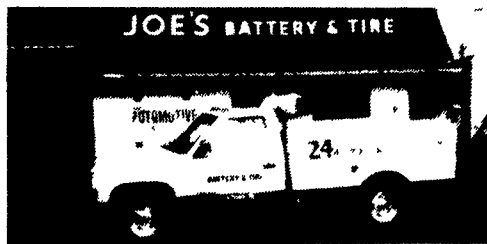
Joe's

BATTERY & TIRE

2225 Union Blvd., Allentown
Open daily 8-5, Thurs. 8-7, Sat. 8-12

CALL

1-800-437-4961



ATTENTION FARMERS

If you have deteriorating concrete masonry or stone walls, have it repaired with GUNITE®

For information and estimates call
Martins Silo Repair
(215) 445-9834

SMITH FARM EQUIPMENT

30 Acker Rd.
Newport, Pa.
Perry County
717-567-3562

NH 455D Skid Loader w/ Bucket, 200 Hrs.
1816 Case Skid Loader

USED EQUIPMENT

986D w/Cab
966 w/cab
966 Fender
756D WFE 3 pt
656D Hydro
560 Gas NFE/FH
300 Gas w/loader
(2) 9N Ford
Oliver 1755D WFE Cab
Oliver 1650D WFE Cab
Oliver 1650G NFE w/ Roll Guard
MF 180D
Long 560D
New JD 148 Loader
Trailer Mount Vac Leaf Machines
NH 770 Harvester w/2 Heads
NH 273 Baler/Thrower
NH 27 Blower
56 Hustler Blower
NI 323 Picker
NI 324 Picker
Steel 8x8x16 Hay Wagon
Gleaner M-2 Combine

Sales, Service & Parts For
AGCO Allis, Kubota, New Idea,
Hesston, Bush Hog And Brillion

MARSHALL MACHINERY, INC.
Rt 652, Midway Between Indian Orchard and Beach Lake.
Honesdale, PA 18431 (717) 729-7117

WE SHIP PARTS DAILY BY UPS.
Hours: 8-5 Mon.-Sat.

COME TAKE A GOOD LOOK

CHECK OUT Our Tillage Equip.

AUTO RESET PLOWS:
IHC: 450 4 Btm. 3 Pth., 700 5 Btm. Semi-Mount, 700 6 Btm. 3 Pth., 710 5 Btm. O/L Hitch, 720 6 Btm. O/L Hitch, 720 5 Btm. Toggle Trip O/L Hitch, 720 8 Btm. O/L Hitch, 735 6 Btm. O/L Hitch; 720 6x18", 3 Pth.
JD: 2500 5 Btm. 18" w/Add On Semi-Mount, 2500 6 Btm. 3 Pth., 2500 7 Btm. O/L Hitch, 2600 5 Btm. O/L Hitch; 2800 7 Btm. O/L.
WHITE: 588 5 Btm.; 508 4 Btm. Semi-Mount; 549 5 Btm. FORD: 3 Bottom.
CHISEL PLOWS: AC: 1600 8 Shank. GLENCO: 17. BRILLION: 7 Shank 3 Pth. IHC: 13 Shank Trailer. BUSH HOG: 12' Shank 3 Pth.
DISCS: Miller 12' & 13' Offset Plow Disc, Kewanee Offset Plow Disc 13'8" Width 36" Dia. HD Cut Out Blade 11,309 Operating Wt., Kewanee Rock Flex Disc, Bush Hog 12' Offset, Reconditioned Disc. Large Selection Of Various Makes & Model Smoothing Or Plowing Discs.

TEST DRIVE One Of These In Our Yard

JD: 2955 w/Sunroof, 2940 w/Sunroof, 4020.
AC: 6060, 6080 w/Ldr. ROPS Sunroof, 6080 w/ROPS & Sunroof; 7000 w/Cab, 7040 w/Cab, 7045 P/S w/Cab, 200 w/Cab, 175 Gas; 180 Diesel, 185 Diesel, 190XT Diesel, D17 Diesel.
DEUTZ: DX160 4WD w/Cab, DX140 w/Cab; 4506 w/Ldr.; 7085 w/Cab. FORD: TW25 w/Cab, 7000, 7600 Hi-Clearance, 4000 w/Ldr., 4100 w/Ldr. Sunroof, 3000 w/Ldr., 8N's, 540A w/Cab. KUBOTA: M8950 4WD w/Cab & Ldr., M 4950 4WD w/Ldr. ROPS Sunroof, L305 4WD w/Ldr.; B7100 4WD; B9200 4WD. WHITE: 2-135 Red Stripe w/Cab. IHC: 400, M, Super H, 140 Hi-Clear. SAME: Saturno 80 4WD w/Cab. MASSEY: 135 w/Ldr., 35 Deluxe w/Ldr. ZETOR: 5245 4WD w/Cab.

Time To THINK About PLANTING EQUIPMENT

JD 8350 Dbl. Disc Grain Drill, JD 7000 Conservation 4 Row Narrow Planter, Moore No-Till Seeder, AC 6 Row No-Till Planter w/Liquid Fertilizer, AC 6 Row Narrow Corn Planter w/Dry Fertilizer, Insect. Boxes, Monitor, JD 216 2 Row Corn Planter, AC 4 Row Corn Planter, AC Ford, JD 2 Row 3 Pth. Corn Planters.
OTHER ITEMS: Brillion 10 Ft. Cultipacker/Seeder, 10 Ft. Cultimulcher.

STOP And Check Our Selection Of Manure Equipment

LIQUID: Hawkbilt 3220 Gallon; H/M 2900 Gallon, 2400, 3000 Gallon Tank On 1973 Int. Tandem Truck, Scavenger 1263; Betterbilt 1500 Gallon.
VACUUM: VanDale 2250 Gallon.
Several NI And NH Box Spreaders, Various Sizes. NI 14 Ground Drive. Barrel Spreaders - NH 668, Hawk 207, JD 465.

HAY & FORAGE

HAYBINES: NEW HOLLAND: 472, 474.
NEW IDEA: 270 And 272 Cut/Ditioners.
HESSTON: 1070, 1071, 1090, 1091, 1014 Hyd. Swing.
DISCS: DEUTZ: SM70.
BALERS: HESSTON: 4600.
N.H.: 316, 315, 310, All w/Throwers; 855 & 847 Round Balers. D/A: HD 490 w/Thrower. N.I.: 484 Round Baler.
JD: 338 w/Thrower, Like New. **FORAGE HARVESTERS:** NH: 892. HESSTON: 2000-100, 2000-150, 7140.
LARGE SELECTION OF PICK-UP & CORN HEADS. CALL FOR YOUR NEEDS.
FLAIL CHOPPERS: J.D.: 3800. N.H.: 34, 36, 38. **FORAGE BLOWERS:** N.I.: 620, 622.
GOOD SELECTION OF SIDE RAKES AND CENTEPEDE TEDDERS.

SPECIAL

Gilmore Tatge 805 No-Till Drill,
18 Disc, Real Nice
\$2,975

PARTIAL LIST Of Miscellaneous Equipment

FORAGE WAGONS: Int'l 110 Chuck Wagon w/Roof, NH 8 Chuck Wagon, JD 714A Forage Wagon w/Roof
FEEDER WAGONS: Knoedler Feeder Wagon, Knoedler Dial-A-Mix Wagon, E-Z Flow 220 w/Grain Wagon, Kilbros 250 Grain Wagon
TMR Mixer Wagon: Butler 320, Schwartz 800; Artsway Mixer Mill; NH 351 Mxer Mill.
ALSO: Stoltzfus Truck Mount Fertilizer Box And 5 Ton Wet Lime Spreader, Case/IH 8610 Bale Processor, Hesston #10 Stack Hand And #10 Stack Processor, Kalyn MD6 Tandem Dump Trailer, Westfield 6"x20 Ft. Grain Auger. Shaver 3 Pth. Post Pounder, JD 30 2 Row Potato Digger.
SPRAYERS: Century 300 Gal. Tandem Trailer, Century 300 Gal. 3 Pth. Boom, Myers 100 Gal. 3 Pth.
LARGE SUPPLY OF FRONT-END LOADERS AND CABS FOR VARIOUS MAKES OF TRACTORS.

INDUSTRIAL

TRACTOR/LOADER/BACKHOES: Case 480, 580, 715 C.
DOZERS: JD 450C w/6 Way Blade, AC 653 w/6 Way Blade, ACH3, Case 450 Crawler w/4 & 1 Bkt.
ALSO:
LOADERS: AC 640, AC 615, Massey 2135, NH L775 Skid Steer Ldr., NH 325 Skid Steer; JD 440A And 440B Log Skidders, Pettibone B66 4WD Forklift, Edwards Manlift, Assorted Tag-A-Long Equipment Trailers, Ford Lane Paver Model A-2; 20' Tandem Utility Trailer.

AUCTION LISTING
IN NEXT WEEK'S ISSUE
AUCTION APRIL 4TH

TINKERER'S ROW: Oliver 88; Ford 8N; JD B; AC G; Same Saturno 80; Farmall H; Farmall Super M; Case 430 Diesel; Farmall 230 WF; JD A WFE; Farmall M; JD, MT, WFE; JD 3010; JD G; Moline R WFE, Farmall 240. These Machines Are "AS IS" And Need Repairs!