

**Carlisle Livestock Market**

Carlisle, Pa.  
 Tuesday, Mar. 3, 1992  
 SLAUGHTER STEERS: SELECT 900-1075 LBS. 67.00-70.00.  
 SLAUGHTER HEIFERS: CHOICE 1050-1235 LBS. 69.00-70.50.  
 SLAUGHTER COWS: ACTIVE! STRONGEST DEMAND FOR EARLY-BIRD PENS BREAK UT. & COMM. 48.00-51.25, CUTTER & BONING UT. 47.50-50.25, CANNER & LOW CUTTER 43.25-47.00, BIG MIDDLE 43.75-46.75, SHELLY 43.00 & DOWN.  
 SLAUGHTER FAT BULLS: YG#1 60.50-65.50, YG#2 54.00-58.50.  
 FEEDER CATTLE: FEEDER STEERS: (ALL WTS) HOLSTEINS 56.00-88.00. FEEDER HEIFERS: (300-400 LBS.) MED. #1 101.00-125.00. FEEDER BULLS: (300-350 LBS.) MED. #1 100.00-110.00.  
 VEAL CALVES: STRONG DEMAND! CHOICE 106.00-125.00, STANDARD-&GOOD 80.00-100.00.  
 FARM BULLS: OVER 95 LBS. TO 160.00, UNDER 95 LBS. TO 155.00. FARM HEIFERS: 145.00-167.50.  
 HOGS: BARROWS & GILTS: US NO. 1-3 (210-260 LB.) 39.00-40.00, OVER 270 LB. 38.50-41.00, UNDER 200 LB. 34.00-37.00, 2&4'S 34.25-38.50.  
 SOWS: OVER 450 LB. 30.00-32.00, UNDER 450 30.00-32.00, 2&4'S (ALL WTS.) 27.00-29.50.  
 BOARS: OVER 300 LBS. 24.25-25.25, UNDER 300 LBS. 30.00-33.50.  
 FEEDER PIGS: (BY THE HEAD): 15-25 LBS. 22.50-29.50, 30-60 LBS. 36.00-48.00.  
 SHOATS: 160-190 LB. 37.00-39.00. SHEEP EWES & BUCKS: 24.00-46.00. LAMBS: GOOD&CHOICE (35-40 LB.) 82.50-89.00, GOOD&CHOICE (50-110 LB.) 71.00-89.00, MED (90-130 LB.) 57.00-66.00.  
 GOATS: (BY THE HEAD) LAR. 62.50-69.00, MED. 52.00-59.00, SM. 22.00-52.50.  
 SALE EVERY TUESDAY 4:30 P.M. MISC. ITEMS, RABBITS, POULTRY & EGGS, 7:00 P.M. LIVESTOCK.  
 SPECIAL FEEDER CATTLE SALE TUESDAY, MARCH 17, 7:45 P.M.  
 NEXT STATE GRADED FEEDER PIG SALE FRIDAY, MARCH 13, 1:30 P.M.

**Valley Stockyards**

Athens, Pa.  
 Monday, March 2, 1992  
 Report supplied by auction  
 HOLSTEIN HEIFER CALVES TO 180.00.  
 VEAL CALVES TO 100.00.  
 VEALER BULL CALVES TO 155.00.  
 SLAUGHTER CALVES 90.00 AND DOWN.  
 GRASSERS & FEEDERS 50.00-92.50.  
 LAMBS BABIES TO 95.00.  
 WOOLED LAMBS TO 67.00.  
 SHEEP 15.00-35.00.  
 HOGS 200-250 LBS. 36.00-43.00.  
 SOWS 25.00-33.00.  
 FEEDER CATTLE: FEEDER STEERS: (300-400 LBS.) MED. #1 101.00-125.00. FEEDER BULLS: (300-350 LBS.) MED. #1 100.00-110.00.  
 VEAL CALVES: STRONG DEMAND! CHOICE 106.00-125.00, STANDARD-&GOOD 80.00-100.00.  
 FARM BULLS: OVER 95 LBS. TO 160.00, UNDER 95 LBS. TO 155.00. FARM HEIFERS: 145.00-167.50.  
 HOGS: BARROWS & GILTS: US NO. 1-3 (210-260 LB.) 39.00-40.00, OVER 270 LB. 38.50-41.00, UNDER 200 LB. 34.00-37.00, 2&4'S 34.25-38.50.  
 SOWS: OVER 450 LB. 30.00-32.00, UNDER 450 30.00-32.00, 2&4'S (ALL WTS.) 27.00-29.50.  
 BOARS: OVER 300 LBS. 24.25-25.25, UNDER 300 LBS. 30.00-33.50.  
 FEEDER PIGS: (BY THE HEAD): 15-25 LBS. 22.50-29.50, 30-60 LBS. 36.00-48.00.  
 SHOATS: 160-190 LB. 37.00-39.00. SHEEP EWES & BUCKS: 24.00-46.00. LAMBS: GOOD&CHOICE (35-40 LB.) 82.50-89.00, GOOD&CHOICE (50-110 LB.) 71.00-89.00, MED (90-130 LB.) 57.00-66.00.  
 GOATS: (BY THE HEAD) LAR. 62.50-69.00, MED. 52.00-59.00, SM. 22.00-52.50.  
 SALE EVERY TUESDAY 4:30 P.M. MISC. ITEMS, RABBITS, POULTRY & EGGS, 7:00 P.M. LIVESTOCK.  
 SPECIAL FEEDER CATTLE SALE TUESDAY, MARCH 17, 7:45 P.M.  
 NEXT STATE GRADED FEEDER PIG SALE FRIDAY, MARCH 13, 1:30 P.M.

**Eighty-Four Livestock**

Eighty-Four, Pa.  
 Monday, March 2, 1992  
 Report Supplied by Auction  
 CATTLE 239. STEERS, SELECT 57.50-67.50; STANDARD 53.50-65.00. HEIFERS, SELECT 62.00-73.50, STANDARD 52.00-58.00, UTILITY 41.00-53.00.  
 COWS: UTILITY AND COMMERCIAL 48.00-54.00; CUTTERS AND BONERS AND UTILITIES 44.00-47.50; CANNERS AND LOW CUTTERS 38.00-43.50; SHELLS 37.00 AND DOWN.  
 BULLS: YG#1 1755-2000 LBS. 67.00-73.00; #2 1235-1730 LBS. 48.00-63.00.  
 FEEDER STEERS: 185-300 LBS. 88.00-97.50; 300-500 LBS. 55.00-76.00; 500PLUS 65.00-83.50; HEIFERS 185-300

LBS. 79.00-81.00; 300-500 LBS. 53.00-84.00; 500 PLUS 56.50-73.50; BULLS 185-300 LBS. 72.50-95.00; 300-500 LBS. 73.00-89.00; 500 PLUS 52.00-78.00.  
 CALVES: 212 HEAD. VEALERS CHOICE 82.00-110.00.  
 FARM CALVES: APPROX. 90-125 LBS. HOLSTEIN BULLS #1 140.00-160.00, #2 117.50-130.00; BEEF BULLS 152.50-170.00; HOLSTEIN HEIFERS 137.50-162.50; BEEF HEIFERS 150.00-192.50.  
 HOGS: 67 HEAD. #1&2 200-220 LBS. 37.00-40.50, #1&2 220-250 LBS. 37.00-39.50.  
 SOWS: UNDER 500 LBS. 25.00-34.00, OVER 500 LBS. 29.00-33.00.  
 BOARS: 26.50-28.50.  
 FEEDER PIGS: BY THE HEAD, #1&3 30 HEAD; UTILITIES 5.00-9.00 HEAD. SHEEP: 214 HEAD. SPRING LAMBS 25-50 LBS. 77.50-90.00; 50-75 LBS. 79.00-87.50; 75-100 LBS. 71.00-74.00; CHOICE 80-100 LBS. 63.00-66.00; 80-100 LBS. GOOD AND CHOICE 45.00-53.00; FEEDER LAMBS GOOD AND CHOICE 45-67 LBS. 61.00-62.50; EWES 28.00-35.50.  
 GOATS: 29 HEAD. LARGE 50.00-75.00, MEDIUM 47.50-56.00, SMALL 10.00-37.50, ALL PER HEAD.

**Four States Livestock**

Hagerstown, Md.  
 March 4, 1992  
 Report supplied by Auction  
 SLAUGHTER COWS: 110 HD. STEADY PRICES. UTILITY 47.00-49.50, HIGH DRESSING 50.00-52.00, CANNERS 43.00-47.00, SHELLY 43.00 DOWN.  
 BULLS YG #1 1200 LB TO 63.00, YG #2 1300-1600 LB 56.00-61.00.  
 FED STEERS: H CH 1150-1300 LB 74.00-75.00, L CHOICE 69.00-73.00, SELECT 63.00-69.00, STANDARD 57.00-63.00.  
 FED HEIFERS: FEW OFFERED. L CH 1300 LB TO 67.75, SEL HOL 800-1000 LB 59.00.  
 VEAL CALVES: CH 200-300 LB 100.00-111.00, GOOD 150-300 LB 89.00-104.00, FEW 300-400 LB TO 85.00, CULLS 85-110 LB 75.00-83.00, 50-80 LB 65.00-75.00, WEAK/ROUGH 60.00 DOWN.  
 FARM CALVES: HOLSTEIN BULLS #1 95-125 LB 140.00-155.00, 80-90 LB 125.00-145.00, #2 75-10 LB 100.00-125.00, HOLSTEIN HEIFERS 115 LB AT 177.00, FEW 85-100 LB 120.00-135.00.  
 BUTCHER HOGS: \$3-4 LOWER. US #2&3 215-260 LB 36.25-37.50, 190-210 LB 34.00-36.00, FEW 300 LB TO 34.00.

SOWS: 275-400 LB 31.50-33.50, 400-500 LB 32.00-34.00.  
 BOARS: TO 27.75.  
 STOCK CATTLE: 132 HD. STEERS: 350-500 LB 78.00-93.00, HOL X 65.00-75.00, 500-600 LB 75.00-84.00, HOL X 62.00-70.00, 600-800 LB 68.00-76.00, 900-1000 LB 62.00-68.00.  
 HEIFERS: 300-500 LB 68.00-79.00, FEW TO 85.00, 500-700 LB 63.00-69.00, FEW TO 78.00, 700-900 LB 60.00-68.00.  
 BULLS: 400-600 LB 72.00-82.00, 1 ANGUS 750 LB AT 80.00.  
 DAIRY REPLACEMENTS: FEW OFFERED. LARGE SPRINGERS 1075.00-1125.00, MEDIUM 800.00-900.00, 1 FRESH AT 775.00, HOLSTEIN HEIFERS 200-400 LB 80.00-101.00, 400-500 LB 70.00-80.00, 700-900 LB 58.00-67.00.  
 LAMBS: FEW 80 LB. TO 64.00.  
 SHEEP: 125 LB TO 35.50.  
 GOATS: 60.00-83.00, LARGE 60.00-83.00, MEDIUM 35.00-50.00.  
 PIGS & SHOATS: 112 HD. BY THE HEAD- 15-25 LB 14.00-23.00, 30-50 LB 20.00-27.00, 50-70 LB 30.00-31.00, BY THE LB- 70-90 LB 32.00-37.00.  
 STOCK BOARS: 225-250 LB TO 34.00.  
 NEXT WED., MARCH 11 - SPECIAL FEEDER CATTLE SALE. PROMISED: 35 - BEEF X STEERS & HEIFERS 400-700 LB; 10 - GRAIN FEDS 1000-1200 LB; 40 - ANGUS X STOCK COWS, CALVES & FEEDERS.

and Large Frame No. 1, 335/435 lbs. steers 85.00-100.00, few 560/725 lbs. 72.00-85.00. Small Lot Medium Frame No. 1 Bulls, 515 lbs. 75.00.  
 CALVES 123... One Prime vealer 120.00, Standard and Good 75/110 lbs. 70.00-75.00. Farm Calves: No. 1, Holstein Bulls 90/120 lbs. 135.00-157.50, No. 2, 80/115 lbs. 90.00-132.50. few No. 1, Hol. Heifers 100/120 lbs. 180.00-200.00.  
 HOGS 366...BARROWS & GILTS: 25 to .75 lower. US No. 1-2 225/255 lbs. barrows and gilts 38.75-39.75, one lot 40.60, 1-3 220/260 lbs. 37.50-38.25, 2-3 220/265 lbs. 34.50-36.75, few 2-4 270/300 lbs. 32.50-34.50, one lot 1-3 205/220 lbs. 35.85-37.25, few 140/165 lbs. 26.20-28.00; SOWS: steady to 1.00 higher. US No. 1-3 310/475 lbs. sows 29.00-32.00, 480/700 lbs. 31.75-33.50. Boars 26.75-27.50, few Lightweights 29.50-30.00.  
 FEEDER PIGS 374... US No. 1-3 20/35 lbs. feeder pigs 89.00-105.00, 40/55 lbs. 71.00-80.00 2-3 45/60 lbs. 50.00-65.00 all per hundred weight, one Lot 1-3 15 lbs. at 16.00 per head.  
 SHEEP 52...Few Choice 105/140 lbs. Woolled slaughter lambs 62.00-69.00, Couple New Crop 20/25 lbs. 120.00 & 125.00, few 50/70 lbs. 75.00-95.00. Slaughter sheep 27.00-34.00, few Yearlings 39.00-52.00. - all Cwt.  
 GOATS 23...few Large 47.00-75.00, Medium 25.00-33.00, Large kids 35.00-42.50, Small kids 24.00-27.00. --- all per head.

**Leesport Livestock**

Leesport, PA  
 March 4, 1992  
 CATTLE 270...(PDA)... Supply included 114 sl. steers and heifers ...Compared with last Wednesday's market: Slaughter steers .50-2.00 higher. Sl. heifers 1.50 to 2.50 higher; Sl. cows steady to 1.25 higher. few Choice steers 1090/1410 lbs. 73.50-76.00, Select 70.00-74.00, few Standard 61.25-62.50, one Prime Holstein at 73.50, few Choice 1300/1500 lbs. 66.00-69.50; Select 61.00-64.00, Standard 58.00-61.00. few High Choice and Prime sl. heifers 1250/1360 lbs. 76.00-78.00, Choice 925/1330 lbs. 72.25-76.00, few to 71.00, few Select 65.75-73.50, few Standard 54.50-64.25. Breaking Utility and Commercial sl. cows 47.75-51.25, few 53.00, few low dressing 44.00-47.00, few Commercial Yield Grade 4-5 42.00-46.00, Cutter and Boning Utility 47.00-49.75, few to 52.50, Canner & low Cutter 44.50-47.75, Shells down to 38.00. Few Select & Choice sl. bullocks 59.00-64.25, few Choice Small Frame 62.50-70.50. Yield Grade No. 1, 1390/1845 lbs. sl. bulls 61.00-64.75, few low dressing 53.00-60.25. Feeder Cattle: few Medium

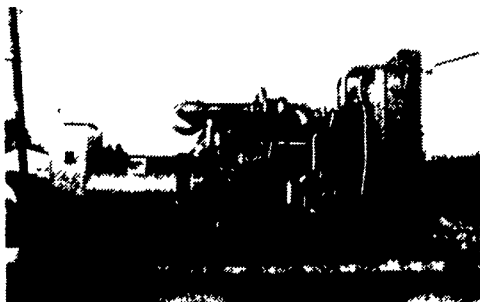
**North Jersey Livestock**

Hackettstown, NJ  
 Tuesday, March 3, 1992  
 Report supplied by auction  
 CALVES .55-1.85.  
 COWS .35-53% .  
 EASY COWS .12-.46% .  
 HEIFERS .43-.72.  
 BULLS .51-.74.  
 STEERS .57% -.74.  
 HOGS .30-.47.  
 SOWS .22-.31.  
 ROASTING PIGS 5.00-34.00 EACH.  
 BOARS .24-.26% .  
 SHEEP .15-.63.  
 LAMBS EACH 9.00-50.00.  
 LAMBS PER LB. .52-1.05.  
 GOATS EACH 31.00-127.50.  
 KIDS EACH 16.00-70.00.  
 HIDES 19.00-20.00 EACH.  
 TOTAL 871.

**SMOKER, LANDIS & COMPANY**

Certified Public Accountants  
 • Individual, Partnership & Corporate Taxes  
 • Accounting  
 • Tax Planning  
 • Auditing  
 • Management Consulting  
 • Personal Financial Services  
 • Computer & Consulting Services  
 • Payroll Preparation  
 • Retirement Plans

49 East Main Street, Leola  
 656-7544 or 392-1333  
 37 Market Square, Manheim  
 665-5979 or 393-1929



**GENERATORS**

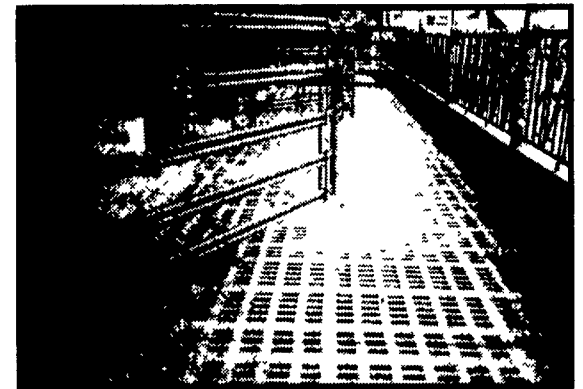
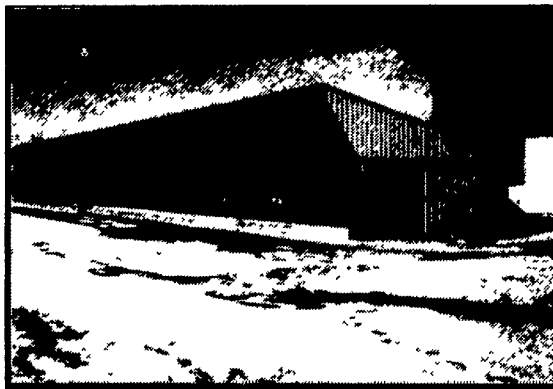
Sales ★ Service ★ Rentals  
 ★ Complete Generator Systems  
 ★ PTO ★ Portables ★ 2-1600 KW

"We Service It If You Have It  
 And Sell It If You Need It"

34 W. Mohler Church Rd.  
 Ephrata, PA 17522

Tel: 717-738-0300  
 Fax: 717-738-4329

**Concrete Slatted Heifer Barns**



The concrete slat with your animals comfort in mind.  
 A large percentage of openings keep animals clean and dry.

**Other Products:**

- H & J Bunks
- Hog & Cattle Slats
- Bunker Silos
- Concrete Hog Penning
- Concrete Post & Beam

Give us a call for more information on hog, beef, dairy and heifer barns.



477 East Farmersville Road  
 New Holland, PA 17857  
 (717) 355-2361

