

Virginia Weekly
Richmond, Va.

Wednesday, February 26, 1992
WEEKLY REVIEW IN VIRGINIA REVIEW OF VIRGINIA DIRECT HOGS FOR THE PERIOD FEBRUARY 18 - 26. RECEIPTS FOR COUNTRY BUYING STATIONS IN VIRGINIA FOR THE PERIOD TOTALED 3126 HEAD. RECEIPTS FOR DELIVERY TO THE PLANT (WITHIN A 30 MILE RADIUS) FOR THE PERIOD TOTALED 3057 HEAD.

MARKET FOR TUESDAY FEBRUARY 25, 1992 CLOSED \$3.00 LOWER COMPARED TO LAST TUESDAY'S TRADING.
BARROWS AND GILTS: VIRGINIA COUNTRY POINTS U.S. 1-3 220-250 LBS 37.00-40.75 LOCAL PLANT DELIVERED (30 MILE RADIUS). US 1-2 220-250 LBS. 38.00-39.00 US 2-3 220-250 LBS. 37.00-38.00 US 1-3 200-210 LBS. 34.00-35.00 US 1-3 210-220 LBS. 36.00-37.00 US 2-4

250-260 LBS. 35.00-36.00 US 2-4
260-270 LBS. 33.00-34.00 US 3-4
270-280 LBS. 31.00-32.00 US 3-4
280-300 LBS. 29.00-30.00.
SLAUGHTER STEERS AND HEIFERS 2%; SLAUGHTER COWS 14% SLAUGHTER BULLS 1%, SLAUGHTER CALVES AND VEALERS 0%; FEEDER CATTLE UNDER 600 LBS 68%, OVER 600 LBS 15% PRICE RANGES FOR VIRGINIA WEEKLY AUCTIONS.
SLAUGHTER CATTLE STEERS: CHOICE 2-3 1000-1150 LBS --- CHOICE 2-3 1150-1300 LBS 70.25-74.00 CHOICE 2-3 1300 & OVER 73.25-77.25.
HEIFERS: CHOICE 2-3 900 LBS & UNDER --- CHOICE 2-3 900-1100 LBS 71.25-75.50 CHOICE 2-3 1100 LBS & OVER 67.25-77.50 SLAUGHTER COWS UTILITY & COMMERCIAL COWS 42.00-53.00 SLAUGHTER BULLS - 1-2 900-1300 LBS 52.50-62.50 1-2 1300-1600 LBS 56.50-67.00 1-2 1600 LBS & OVER 59.50-69.00 SLAUGHTER CALVES AND VEALERS VEALERS - HIGH CHOICE & PRIME 200-350 LBS --- GOOD AND CHOICE 200-350 LBS

--- CALVES - GOOD AND CHOICE 250-500 LBS 77.00-82.00 SLAUGHTER LAMBS HIGH CHOICE & PRIME 95-125 LBS WOOL 57.00-58.50 HIGH CHOICE & PRIME 95-125 LBS SPRING 74.00 SLAUGHTER HOGS US 1-3 200-250 LBS 41.00 SOWS US 1-3 300-500 LBS 26.00-30.00 500 LBS & OVER 31.00-33.00.
FEEDER CATTLE STEERS: MEDIUM 1 HEIFERS: MEDIUM 1 200-300 LBS 97.00-114.00 300-400 78.00-94.00 300-400 92.00-109.00 400-500 78.00-92.00 400-500 89.00-103.00 500-600 71.00-83.00 500-600 82.75-98.00 600-700 69.00-76.00 600-700 75.00-88.00 700-800 67.00-68.50 700-800 73.00-80.00 800-900 65.00-68.50 800-900 68.00-76.00.

Morrison Cove Livestock
Martinsburg, Pa.
February 24, 1992
Report supplied by auction
CATTLE: 209. STEERS CHOICE 75.25-77.25; GOOD 70.50-74.75. HEIFERS: CHOICE 71.00-74.50; GOOD 66.00-70.50.
COWS: UTILITY & COMMERCIAL 46.50-53.00; CANNER & LOW CUTTER 39.00-50.75.
BULLOCKS: GOOD & CHOICE 61.00-64.60.
BULLS: YIELD GRADE NO. 1 60.00-64.00.
FEEDER CATTLE: STEERS 68.00-84.00; BULLS 61.00-79.00; HEIFERS 65.00-82.00.
CALVES 308. PRIME NO MARKET TEST; CHOICE NO MARKET TEST; GOOD 84.00-95.00; STANDARD 51.00-89.00; HOLSTEIN BULLS 90-130 LBS. 122.00-162.00; HOLSTEIN HEIFERS 90-130 LBS. 120.00-152.00.
HOGS: 133. US NO. 1-2 41.50-43.75; US NO. 1-3 38.50-40.75.
SOWS: US NO. 1-3 25.00-34.75, BOARS 23.75-32.25.
FEEDER PIGS: 37. US NO. 1-3 20-50 LBS. 12.00-27.00 PER HEAD.
SHEEP: 38. CHOICE 60.00-69.00; GOOD 52.00-59.00; SL. EWES 15.00-32.00; GOATS- 17.00-61.00.
47 LOADS OF HAY, ALFALFA 137.50-187.50 PER TON; TIMOTHY 71.00-98.00 PER TON.
5 LOADS OF STRAW, 65.00-80.00 PER TON.
2 LOADS OF EARCORN 94.00-96.00 PER TON.
4 PICKUP LOADS OF FIREWOOD 20.00-30.00 PER PICKUP.

Northern Virginia Livestock Summary
Orange, Va.

Wednesday, February 26, 1992
ALL TRENDS COMPARED TO LAST WEDNESDAY NO REPORT THIS WEEK.

Southeast Virginia Livestock Summary
Southside (Blackstone) - Smithfield, Va.

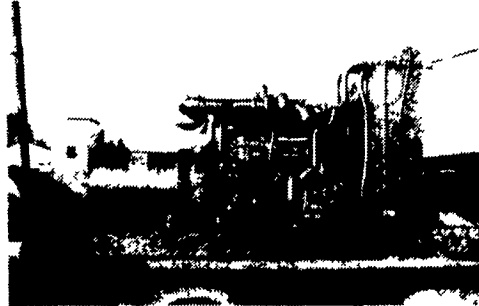
Wednesday, February 26, 1992
NO REPORT THIS WEEK.

Shenandoah Valley Livestock
Harrisonburg, Va.

February 22, 1992
Report supplied by auction
STEERS: M&L-1 300-500 LBS. 93.00-103.00; 500-700 LBS. 82.00-97.00; 700-1000 LBS. 68.00-78.00.
S-L&M&L-2: 300-500 LBS. 88.00-100.00; 500-700 LBS. 77.00-93.00; HOLSTEINS 57.00-90.00.
FEEDER BULLS: 300-500 LBS. 86.00-100.00; 500-700 LBS. 72.00-82.00; 700-1000 LBS. 65.00-71.00.
HEIFERS: 300-500 LBS. 75.00-84.00; 500-700 LBS. 69.00-79.00; 700-800 LBS. 62.00-70.00.
S-L&M&L-2: 300-500 LBS. 70.00-77.00; 500-700 LBS. 66.00-74.00; 700-800 LBS. 60.00-65.00.
STOCK COWS: BEEF 700.00-810.00; BABY CALVES BY THE POUND, 90-1.49; BY THE HEAD 40.00-150.00.
SLAUGHTER COWS: UTILITY AND COMMERCIAL 2-4 42.00-57.00; CANNERS AND CUTTERS 40.00-48.00; SLAUGHTER BULLS 56.75-70.00.
LAMBS: BLUE O SPRING LAMBS 74.00; SLAUGHTER EWES 19.00-27.00; HEAD EWES 52.00-62.00.
TOP HOGS: 41.00.
SOWS: 1-3 26.00-32.00.
SLAUGHTER CALVES: 72.00-78.00.

Valley Stockyards
Athens, Pa.

Monday, February 24, 1992
Report supplied by auction
HOLSTEIN HEIFER CALVES TO 190.00.
VEAL CALVES TO 90.00.
VEALER BULL CALVES TO 175.00.
SLAUGHTER CALVES 90.00 AND DOWN.
GRASSERS & FEEDERS 47.00-80.00.
LAMBS BABIES TO 125.00.
WOOLED LAMBS TO 67.00.
SHEEP 14.00-33.00.
HOGS 200-300 LBS. 28.00-36.00.
SOWS 23.00-29.50.
BOARS 22.00-28.00.
PIGS, NONE.
HEIFERS 48.00-55.00.
STEERS, HOLSTEIN TO 55.00.
FEEDER STEERS 50.00-80.00.
BULLS 48.00-62.75.
GOOD COWS 46.00-49.00, FEW TO 50.00.
COWS MEDIUM 38.00-46.00.
COWS POOR OR SMALL 38.00 AND DOWN.
PONIES TO 90.00.
GOATS TO 70.00.



GENERATORS

Sales ★ Service ★ Rentals
★ Complete Generator Systems
★ PTO ★ Portables ★ 2-1600 KW
"We Service It If You Have It And Sell It If You Need It"

34 W. Mohler Church Rd.
Ephrata, PA 17522

Tel: 717-738-0300
Fax: 717-738-4329

Replace Your Bulbs - Save Electricity
FLUORESCENT LIGHTS

PRICES AS LOW AS ~~\$6.99~~ NOW **\$5.95**

- Save Energy Replaces up to 75 watt incandescent
- Easy Installation
- Economical Lasts 10 times longer than standard bulb
- Fewer Lamp Changes
- Lower Maintenance Cost
- Durable Polycarbonate Housing
- 45 000+ Hour Ballast
- 10 000+ Hour Lamp Life
- Air Cooled
- Water Resistant Ballast
- 120 Volt
- Ratcheted Brass Socket
- Medium Base
- Starting Temperatures 0
- Made in USA

MODEL	WATTS	INCANDESCENT EQUIVALENT	INITIAL LUMENS
3000	5	25 WATTS	250
3200	7	40 WATTS	400
3500	9	60 WATTS	600
3700	13	75 WATTS	900
3800	22	90 WATTS	1300

Call Toll Free 1-800-673-2580

SOLD AND SERVICED BY:

NORTHEAST AGRI SYSTEMS, INC.

FLYWAY BUSINESS PARK
139 A West Airport Rd.
Lititz, PA 17543
(717) 569-2707



SWATHER'S CHOICE

ALFALFA HAY CONDITIONER



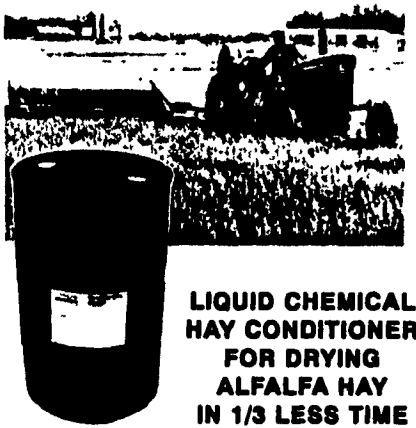
Alfalfa and other legume crops have a coating of wax. While this coating is a natural protection for the growing plant, it is an inhibitor to moisture loss in field curing and to feed utilization in the digestive system of ruminant animals. The presence of this coating of wax also makes the hay stem brittle and less palatable to livestock.

Swather's Choice "washes off" the outside waxy coating of alfalfa, allowing for the water inside the plant to evaporate more rapidly than in untreated hay. Swather's Choice is actually a soap that is safe for livestock consumption and won't affect palatability.

In studies at Michigan State University, hay treated with the ingredients in Swather's Choice had higher protein and lower fiber. In a further study at Utah State University, cows consumed 2.2 pounds more treated hay per day.

Unlike conventional granular drying agents, Swather's Choice is a liquid chemical hay conditioner. It is easily tank mixed with water and requires only fifteen gallons per acre in most applications, compared with the conventional products that are normally applied at 30 gallons per acre.

AVAILABLE FROM: **DAVID O FINK**
(215) 767-1408



LIQUID CHEMICAL HAY CONDITIONER FOR DRYING ALFALFA HAY IN 1/3 LESS TIME

HARDY OUTSIDE WOOD FURNACE

- All Stainless Steel Construction
- Any Size To Fit Your Needs • Completely Safe
- Easily Connects To Forced Air/Hot Water Sys.
- U.L. Approved • 24 Hour Service

See You At The Home Builders Show,
Harrisburg, Feb. 29th Thru March 8th
CLYDE K. ALDERFER
(717) 539-8456

PRO GENETICS Bonus Maker Boars

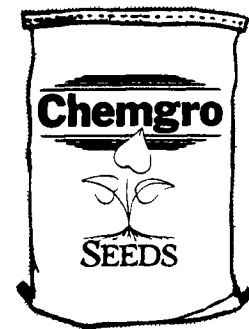
Offering Duroc, Blackline & Maternal Line Boars

FULLY TESTED & INDEXED • LEAN & MUSCULAR
RAISED IN CENTRAL PA

For Information And Prices Contact:
"J.J." JARMON
(PA Toll Free) 1-800-468-5524 or (717) 367-1525



419 West High Street
Elizabethtown, PA 17022



QUALITY SEED IN THE BAG! OUTSTANDING IN THE FIELD!

CORN - ALFALFA - SOYBEANS

CHEMGRO

Box 218
East Petersburg, PA 17520
717-569-3296 1-800-346-GROW