

Westminster Hay

Westminster, Md.

Tuesday, February 25, 1992
Report Supplied by Auction

TOTAL LOADS: 68.
ALFALFA: 70.00-130.00, 1.50-4.00 BALE.
ALFALFA MIX: 95.00-115.00, 2.50-3.00 BALE.
TIMOTHY: 83.00, 1.90-2.40 BALE.
TIMOTHY MIX: 70.00-87.00, 1.40-2.20 BALE.
CLOVER: 1.80 BALE.
TIMOTHY ROUND: 75.00, 30.00 EACH.
GRASS ROUND: 18.00-30.00 EACH.
MEADOW GRASS HAY: 92.50, 1.45 BALE.
ORCHARD GRASS: 87.50-97.50, 1.50 BALE.
OATS: 2.30 BU.
STRAW: 70.00-92.50, .80-1.90 BALE.
WOOD: 50.00-62.50 CORD.

Leinbach's Hay

Shippensburg, PA

February 22 and 25

Report Supplied by Auction,

TOTAL LOADS: 111.
ALFALFA: STANDARD 85.00-115.00, HIGH QUALITY 125.00-154.00, 1 AT 240.00.
MIXED HAY: 85.00-132.00.
TIMOTHY: 78.00-120.00.
CLOVER: 75.00-113.00.
BROME GRASS: 80.00-124.00.
ORCHARD GRASS: 75.00-100.00.
STRAW: 72.00-102.00.
EAR CORN: 92.00-110.00.
CORN FODDER: 40.00-48.00.
OATS: 2.60 BU.
FIREWOOD: 22.00-32.00 LOAD.

Belleville Hay

Wednesday, February 26
Belleville, PA

Report Supplied by Auction

TOTAL LOADS: 92.
ALFALFA: 105.00-175.00.
MIXED HAY: 77.50-135.00.
STRAW: 97.50-115.00.

**Special Sale
Work and Driving Horses,
Mules**

New Holland Sales Stables

New Holland, PA

Friday, February 21, 1992

Report Supplied by Auction

349 HEAD. WORK HORSES MICHIGAN, PAIRS 1750.00-2400.00, SINGLES 1100.00-1400.00; PENNSYLVANIA, SINGLES 910.00-1300.00; TENNESSEE, PAIRS 2500.00-3150.00, SINGLES 1025.00-1350.00; VIRGINIA, PAIRS 1850.00-2175.00, SINGLES 975.00-1450.00; NORTH CAROLINA, PAIRS 2450.00-3000.00, SINGLES 1000.00-1500.00.
WORK HORSES FROM VIRGINIA, PAIRS 1875.00-2400.00, SINGLES 1025.00-1400.00; MULES FROM PENNSYLVANIA, PAIRS 2200.00-3800.00, SINGLES 1000.00-2050.00; MULES FROM TENNESSEE, PAIRS 2150.00-3150.00, SINGLES 1075.00-1250.00; TENNESSEE MULES, PAIRS 2150.00-4700.00.
DRIVING HORSES: MAINE 750.00-1900.00; NEW YORK 775.00-1325.00; OHIO 800.00-2000.00.
LOCAL DRIVING HORSES 710.00-1400.00; WORK, PAIRS 1875.00-3500.00, SINGLES 825.00-1825.00; MULES, PAIRS 3300.00-3400.00, SINGLES 950.00-1000.00.

**Greencastle
Livestock**

Greencastle, Pa.

Monday, Feb. 24, 1992

TOTAL CATTLE: 575 HEAD.
SLAUGHTER CATTLE RECEIPTS: 470 HEAD.
SLAUGHTER STEERS: 130 HEAD. TREND STEADY TO .50 LOWER; HIGH CHOICE AND PRIME 2-4 75.00-79.00; CHOICE 2-3 950-1075 LBS. 67.00-74.00; CHOICE 2-3 1075-1375 LBS. 69.00-75.00; CHOICE 2-3 OVER 1375 LBS. 64.00-70.00; CHOICE 4 ALL WEIGHTS 64.00-68.00; SELECT & CHOICE 1-2 950-1100 LBS. 64.00-70.00; SELECT & CHOICE 1-2 1100-1375 LBS. 63.00-70.00; SELECT & CHOICE 1-2 OVER 1375 LBS. 60.00-66.00.
HOLSTEINS: CHOICE 2-3 1050-1450

LBS. 63.00-67.00; SELECT 1-2 1050-1450 LBS. 57.50-62.50.
SLAUGHTER HEIFERS: 47 HD. TREND: STEADY TO .50 LOWER. CHOICE 2-3 850-1000 LBS. 64.00-72.00; CHOICE 2-3 1000-1250 LBS. 70.00-76.50; CHOICE 4 ALL WEIGHTS 64.00-68.00; SELECT & CHOICE 1-2 850-1000 LBS 62.00-70.00; SELECT & CHOICE 1-2 1000-1250 LBS. 64.00-71.50.
HOLSTEINS: CHOICE 2-3 1000-1350 LBS. 59.00-65.75; SELECT & CHOICE 1-2 1000-1350 LBS. 55.00-59.25.
SLAUGHTER BULLS: 24 HD. YIELD GRADE 1 ALL WEIGHTS 63.00-70.50; YIELD GRADE 2 ALL WEIGHTS 55.00-62.00.
BULLOCKS: 5 HEAD. CHOICE 1-3 1150-1375 LBS. 65.00-67.75; SELECT 1-2 950-1250 LBS. 66.00 AND 72.00.
COWS: 264 HD. TREND: 1.00 TO 2.00 HIGHER. BREAKING UTILITY & COMMERCIAL 46.00-51.50; CUTTER & BONING UTILITY 48.00-54.00; CANNER & LOW CUTTER 47.00 & DOWN.
STOCKER & FEEDER CATTLE RECEIPTS: 105 HD. TREND: STEADY. BEEF TYPES: 200-400 LBS. STEERS 76.00-102.00, BULLS 70.00-94.00, HEIFERS 70.00-84.00; 400-600 LBS. STEERS 73.00-87.00, BULLS 70.00-76.00, HEIFERS 70.00-81.00; 600-800 LBS. STEERS 70.00-84.00, BULLS 64.00-74.00, HEIFERS 64.00-74.00; 800-975 LBS. 65.00-72.00, BULLS 60.00-63.00, HEIFERS 62.00-67.00.
HOLSTEINS & DAIRY CROSS: 200-400 LBS. STEERS 75.00-91.00, BULLS 70.00-80.00, HEIFERS 79.00-112.00; 400-600 LBS. STEERS 65.00-74.00, BULLS 60.00-67.00, HEIFERS 70.00-80.00; 600-800 LBS. STEERS

62.00-67.00, BULLS 50.00-60.00, HEIFERS 60.00-65.00; 800-975 LB. STEERS 55.00-61.00, BULLS 45.00-56.00, HEIFERS 54.00-64.00.
CALVES: 469 HD. TREND: STEADY TO STRONGER. CHOICE 150-300 LBS. 90.00-111.00; GOOD 150-300 LBS. 75.00-90.00; GOOD 100-150 LBS. 80.00-85.00; GOOD 80-100 LBS. 80.00-85.00; STANDARD 80-100 LBS. 74.00-80.00; STANDARD 80 LBS. AND DOWN 73.00 & DOWN.
CALVES RETURNING TO THE FARM: TREND: STEADY TO STRONGER. HOLSTEIN BULLS OVER 100 LBS. UP TO 164.00; UNDER 100 LBS. UP TO 160.00; HOLSTEIN HEIFERS OVER 100 LBS. UP TO 175.00; UNDER 100 LBS. UP TO 140.00; BEEF TYPE BULLS OVER 90 LBS. UP TO 175.00.
SHEEP & LAMBS: 68 HD. LAMBS: TREND: STEADY. CHOICE 80-100 LBS. 56.00-62.00; 100-120 LBS. 54.00-60.00; 120 AND OVER 48.00-54.00; MEDIUM & GOOD ALL WEIGHTS 50.00-64.00; LIGHT LAMBS 75.00-95.00.
SHEEP: EWES LEAN 26.00-33.50; EWES FAT 24.00-30.00; YEARLINGS 35.00-40.00; BUCKS 21.00-29.00.
GOATS: 202 HD: SMALL 18.00-29.00; MEDIUM 29.00-60.00; LARGE 60.00-105.00.
HOGS, SOWS & BOARS: 174 HD. HOGS, BARROWS & GILTS: TREND: 1.00 LOWER. 210-250 LBS. 39.00-41.00; 250-260 LBS. 37.00-39.50; 260-270 LBS. 36.00-37.75; 270-300 LBS. 35.00-36.50. LIGHT HOGS: 140-180 LBS. 28.00-34.00; 180-210 LBS. 33.00-36.50.
SOWS: TREND: STEADY. GOOD SOWS UNDER 400 LBS. 31.50-33.75; GOOD SOWS OVER 400 LBS. 32.00-35.00; CULL SOWS ALL

WEIGHTS 29.00 & DOWN.
BOARS: TREND: STEADY. 180-210 LBS. 27.00-31.50; 210-260 LBS. 28.00-33.50; 260-300 LBS. 26.00-31.00; 300 LBS. & OVER 20.00-26.00.
SALE EVERY MONDAY AT 2:00 P.M. & EVERY THURSDAY AT 1:00 P.M.
HAY & STRAW SALE EVERY MONDAY & THURSDAY AT 11:30 A.M.
SPECIAL FEEDER CATTLE SALE FRIDAY, MAR. 6, 1992 AT 7:15 P.M.
SPECIAL FEEDER PIG SALE: SATURDAY, MAR. 28, 1992 AT 1:00 P.M.

**North Jersey
Livestock**

Hackettstown, NJ

Tuesday, February 25, 1992

Report supplied by auction

CALVES 22-150.
COWS 35-53.
EASY COWS .04%-.53% .
HEIFERS .47%-.68% .
BULLS .55-.64 .
STEERS .52-.71 .
HOGS .30-.39 .
SOWS .27-.29% .
ROASTING PIGS 40.00 EACH.
BOARS .24-.25 .
SHEEP .10-.49 .
LAMBS EACH 5.00-61.00 .
LAMBS PER LB. .40-.94 .
GOATS EACH 43.00-107.50 .
KIDS EACH 21.00-70.00 .
HIDES 20.00-23.00 EACH .
TOTAL 1026.

**PARADISE CONCRETE
METERED DELIVERY!**

You can't over or under order! Guaranteed Savings! Variable Pricing!

DEFINITELY CALL US BEFORE YOU BUY!

Delivery When You Need It! Large And Small Trucks



717-687-0990

Dedicated To The Farm Community

Mitch White
Eric R. Probst



NOW RECEIVING:
Mon. 6:30-11 a.m.
Sat. 6:30-10 a.m.



Hatfield Quality Meats

Rt. 897 - 1 mile North of Fivepointville
(215) 445-5776 • FAX (215) 445-6099

- Market Hogs
- Sows • Boars
- Cull Pigs

**HORSE SALE
MARCH 6, 1992
10:00 A.M.**

**NEW HOLLAND SALES STABLES INC.
THE ACTION AUCTION**

LIVESTOCK IS OUR ONLY BUSINESS

3 HERD DISPERSALS

Load Selected Fresh Cows and Springers

Load Cows from upstate Pa. & Franklin Co.

See Page B54 for Details

MONDAY

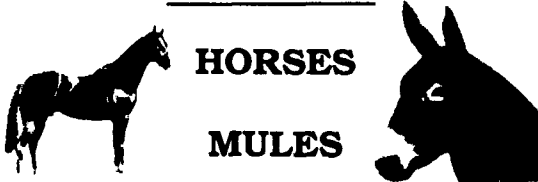
SLAUGHTER HOGS



**EARLY BIRD HOG SALE
8:00 A.M.**

Sell Your Hogs At New Holland Sales Stables, Inc. See them weighed, sold and pickup your check.

10:00 A.M.



**HORSES
MULES**

1:30 P.M.

BEEF SALE



**SHEEP
GOATS
CALVES**



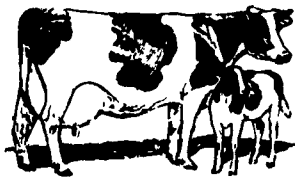
WEDNESDAY

HEIFER SALE

11:00 A.M.

COW SALE 12:00 NOON

**HEIFERS
BULLS**



**DAIRY
COWS**

We have the usual run of 50 to 100 Heifers, all ages. Loads of fresh cows and springers from our regular shippers. Also some local fresh cows and springers.

1:30 P.M.

FEEDER PIG SALE



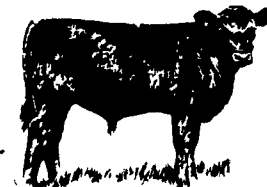
Pigs are accepted after 6:30 A.M. State graded from 8 to 12. Dairy Barn and Feeder Pig Barn are cleaned and disinfected weekly for your protection.

THURSDAY

Beef Auction

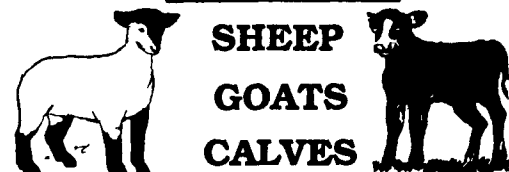
10:00 A.M.

**BULLS
STEERS
BEEF COWS**



**1:00 P.M.
STOCKERS
&
FEEDERS**

12:00 NOON



**SHEEP
GOATS
CALVES**

NEW HOLLAND SALES STABLES, INC.
12 Miles East of Lancaster Off Route 23, New Holland, Penna.

MANAGERS

Norman & David Kolb - 717-397-5538

Field Representatives

Luke Eberly - 215-267-6608 738-1865
Homer Eberly - 215-267-3047
Ron Ranck - 717-656-9849

Sale Barn Office Manager
Roger Floyd - 717-354-4341
FAX # 717-355-0706

Order Buyer
Paul Good - 215-445-6662