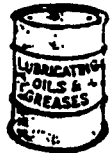


1 FARM EQUIPMENT

Larry L. Adair
Amalite

Shell Mobil
55 Gal. Drum Delivered Free 50 Mi. Radius From York, PA
Kendall Lubeco
Call For Prices Early Morning Or Late Evenings
Conoco
(717) 755-8638
800-755-OILS (6457)

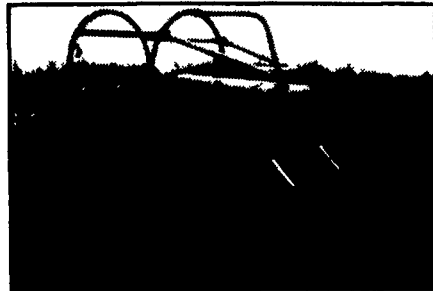


1979 Hyster
7000 Lb. Capacity, 6 Cylinder Continental Gas Engine, Power Steering, Good Tires
\$5,000
215/269-1871 Ches. Co. Pa.

1a CONSTRUCTION EQUIPMENT

1984 680H Case Backhoe, 1-1/2 yd. front bucket, Extend-a-hoe w/24" bucket, cab w/heat, AB, 1700 hrs., "ready to work", \$18,000. Seaford, DE, 302-629-2377.

FOR SALE
Loed Model 534 4-Wheel Drive, Rough Terrain Hi-Lift, Triple Telescopic Mast, Good Condition
\$13,500 OBO
Ph. 717-866-7565



CAT D7E
Direct Electric Start, 1965, Undercarriage Fair Condition Routers + Segenents O.K.
Price Reduced **\$9,800 OBO**
JOHN HORNOR
42 Ft. Dix Rd., Pemberton, NJ 08068
609-894-2849
Sundays O.K.



Dust Collection System
Size: VM120-162
Serial #: VM2721
Make: Young
Fultz Bros.
R.D. 1 Box 192
Ellittsburg, Pa. 17024
717-438-3354
717-438-3017 Fax

1a CONSTRUCTION EQUIPMENT

1987 Ford F800, 6 cu. yard box dump, 28,000 GVW, 5 speed w/2 speed rear, 8.2L Detroit Diesel engine, \$15,000. For more info call Tom Burleigh, Hertz Equipment Rental. 215-391-1890.

1988 Custom 9 ton tri-axle tag-a-long trailer, electric brakes \$3000; 2 Parker 27' aluminum dump trailer bodies \$4000 OBO; 19' Freuhau 15 ton low-boy equipment trailer \$2000 OBO. Berks. 215-562-5419.

1988 JD 644E, 3 yd. bucket, rubber tire loader, 2670 hrs., \$57,000. For more info call Tom Burleigh, Hertz Equipment Rental 215-391-1890.

1990 Leibherr 621B crawler loader, 2162 hours, cab w/AC, excellent condition, \$41,000. 215/458-8722.

21 used forklifts in stock, all models available. 215-766-0778.

680 CK backhoe loader, working condition, \$8000. 717-436-9594.

9 wheel Galion roof-automatic roller, 240 original hours, \$4500; Hobart welder, 2 cyl. gas, 200 amp \$800; Farmall Cub w/sickle bar mower, needs paint \$1500, hyd. lift. 609-894-2849.

BACKHOE FORD 3550, diesel, \$4,500 410-833-9091

CASE 450B Crawler Loader, new UC, rebuilt bucket, excellent condition, \$12,700. 717/752-7131.

CAT 941B, SN 80H2981, 90% undercarriage, excellent condition, work ready, \$17500 215/357-9039.

Case 450 Crawler loader with ripper, 90% undercarriage, rebuilt motor and torque converter, nice machine \$12,500 215-562-5419

Case 580-C Diesel backhoe, good condition, job ready \$9350 York Co Phone 717-792-1635

Case 680 backhoe, 15' dig, good condition, \$9000 Parkton, MD 410-343-0802 after 6PM

Cat 951-B crawler/loader, \$12,500 HELP, Inc Rt22, Grantville, PA 17028 (800)446-0505

Cat 977 crawler, runs real good Hubert Derstine, (717)423-6719

CRAWLER LOADER CASE 1150B, cab, 4 in 1, new engine & new UC, ready to work, \$13,500 410-833-9091

Crawler Loader 955H Caterpillar, pedal steer, V.G. U/C, Cab, \$9800 215-267-7074 Eves

DISMANTLING FOR PARTS: Heavy construction equipment, most makes and models, parts locator service available. Balanda Equipment Co. Palm, PA 18070 1-800-322-8030

FOR SALE: 450C John Deere tracks, 60-65%, \$500, never turned pins. 814-886-4539.

Huber Grader MD1300, cab and heater 4-53 diesel engine. Very good condition. Will trade on Huber 850-A maintainer diesel engine. 717-938-3517.

Int. 3400A loader backhoe, good condition \$7500. Petitebone 402 road grader, working condition \$2000 Call Rick 717/799-0309

K & D Const Forklift, 8000 lb., diesel sideshift, \$4,950 1980 John Deere crawler loader, model 555, very clean, \$19,500 Case 580C loader backhoe, excellent condition, \$11,900 Pottstown Equipment, Call 215-326-4969

Lincoln Weldanpower 16hp, gas, AC-DC with leads, \$1,250. (717)943-2511.

1a CONSTRUCTION EQUIPMENT

TITAN SANDBLAST MACHINES

A FULL RANGE OF MACHINES TO FIT YOUR NEEDS

■ THREE SERIES EACH SERIES DESIGNED AND ACCESSORIZED FOR A DIFFERENT INTENSITY OF USE

■ 7 STANDARD MODELS ALL MODELS SHARE THE SAME UNCOMPROMISING QUALITY

ECONOMY LINE
Occasional Use With Limited Air Supply (20-30 CFM @ 100 P.S.I.)

100SP

FEATURES:
- 70 Lb. Code Tank • Automatic Sealing Fill Port
- All Steel Piping • Full Air Control Valving (Inlet - Exhaust - Choke) • Completely Portable • Wheels Included 6 • Abrasive Regulator

ACCESSORIES INCLUDED:
Moisture Separator • Air Pressure Gauge • 16 1/2" Premium Quality Blast Hose • All Required Couplings • 6 Ceramic Nozzles - Orifice Optional • Blast Hood With Safety Cap

Operational As Described Above
100 lb. Sand Capacity \$595.00

PLEASE ADVISE THE AVAILABLE AIR SUPPLY WHEN ORDERING. If cubic feet per minute is not available, indicate horsepower of driving motor and if gas or electric.

STANDARD LINE
Steady Use With Good Air Supply (65-200 CFM @ 100 P.S.I.)

200SP

FEATURES:
ASME Code Tank • Automatic Sealing Fill Port • All Steel Piping • Full Air Control Valving (Inlet - Exhaust - Choke) • Completely Portable • Wheels Included 10 • Abrasive Regulator • Rapid Internal Pressurization Feature Included

ACCESSORIES INCLUDED:
Moisture Separator • Air Pressure Gauge • 25 3/4" Premium Quality Blast Hose • All Required Couplings • Tungsten Carbide Nozzle-Orifice Optional • Heavy Canvas Blast Hood With Safety Cap & Large Viewing Window

200 lb. Capacity
890.00

PRODUCTION LINE
Intensive Use With Better Air Supply (125-600 CFM @ 100 P.S.I.)

U-700P ULTRA BLAST

FEATURES:
ASME Code Tank • Automatic Sealing Fill Port • All Steel Piping • Full Air Control Valving (Inlet - Exhaust - Choke) • Completely Portable • Wheels Included 10-12 • Heavy Duty Abrasive Regulator (Cast Iron) • Conical Bottom for Superior Abrasive Flow • Rapid Internal Pressurization Feature Included

FOUR MODELS AVAILABLE
300 lb., 500 lb., 700 lb., 1000 lb. Sand Capacities

DUE TO THE MANY OPTIONS AVAILABLE WITH ULTRA BLASTERS WE SUGGEST A CALL OR LETTER ADVISING US OF YOUR SPECIFIC REQUIREMENTS

TITAN BLAST CLEANING CABINETS

MODEL 24 — Top opening only. Fluorescent light & Dust collector
Ht 4' 10" Width 24" Depth 24" **\$695.00**

MODEL 36 — Top opening and one side. Fluorescent light, Regulator Gauge, Rubber Gloves affixed, Tungsten Carbide nozzle & Dust collector
Ht 4' 10" Width 36" Depth 24" **\$875.00**

MODEL 48 — Top opening and right & left side opening. Other features same as Model 36 above
Ht 4' 10" Width 48" Depth 24" **\$995.00**

Various finishes can be achieved through the use of glass beads, aluminum oxide, walnut shells or other abrasives available from our stock. Requires 3 HP Air Compressor for continuous operation.

Comprehensive catalog on request. Complete line of parts, equipment and abrasives in stock. Terms: Check or M.O. 30% Deposit on C.O.D.

TITAN ABRASIVE SYSTEMS, INC. BOX 318 FURLONG, PA 18925 PHONE 215-794-5661

G&H Service, Inc.

Route 206 North, P.O. Drawer E
Newton, NJ 07860 (201) 383-3370
Outside NJ 1-800-545-1278
Toll Free NJ (Parts) 1-800-382-9207
JD FINANCING AVAILABLE TO QUALIFIED BUYERS

CRAWLER DOZERS

1979 JD 850 Dozer, 5500 Hours.....	\$32,000
1976 JD 450C Dozer.....	\$17,000
1986 Komatsu D-85E-18 Dozer, 2516 Hrs.....	\$48,000
1981 JD 555 w/Backhoe ROPS Regular Bucket..	\$18,000
1976 JD 350C Dozer.....	\$15,000
1985 JD 450E Wide Track Dozer.....	\$30,000
1980 JD450-C Dozer, new bottom	\$22,000
1985 JD450-E Dozer	\$27,000
1988 JD 550G Dozer, 2100 Hrs.....	\$32,000
1988 JD 650G, 1000 hours.....	\$46,000
1988 JD 400G Dozer, 930 Hrs.....	\$24,000

WHEEL TRACTOR

1985 Bradco (Ford 1910) Loader Backhoe.....	\$14,500
Wheel Horse Lawn Tractor, Model 210-5 36" Cut, Like New	\$1,500
1989 JD 755 Utility diesel 4WD, #70 loader, 3 pt. hitch w/York rake, 443 hrs.	\$9,000

HYDRAULIC EXCAVATORS

1983 Case 880C Excavator.....	POR
1986 JD 25 Excavator, 2428 Hrs., New Tracks ...	\$15,000
1986 JD 50 Excavator, 700 Hrs.	\$29,000
1988 JD 70-D Excavator with Blade, long stick, 1900 hours	\$30,000

MISCELLANEOUS

Long 3 pt. hitch backhoe.....	\$2,000
ARPS 3 pt. hitch backhoe.....	\$3,000
Mighty Mover Landscape Trailer, 2 Axles, Long Bed	\$1,700
New JD 350 Crawler Loader Series 4-1 Bucket Replacement clam and back.....	\$1,500
JD 9550 backhoe for 350 series.....	\$2,500

Repower With New JD Engines Up-Grade Your Tractors, Pumps, Air Compressors, Generator Sets, And Most OEM Engine Applications. 2 Year Warranty With Options To 5 Years.

Eager Beaver TRAILER SPECIALS

New Leftover 10 Ton Electric Brake..... \$6,775
New Leftover 12 Ton Air Brake Including F.E.T..... \$8,375

WHEEL LOADER BACKHOES

1986 JD 415B, cab, side shift, extend-a-hoe.....	\$16,000
1986 Ford 655A, Cab, reg. hoe.....	\$18,000
1987 JD 310C w/ROPS, 250 hrs.....	\$26,000
1987 JD 310C w/cab & 4 WD.....	\$28,500
1975 Case 580B w/Cab.....	\$8,500
1972 MF 50A.....	\$7,500
1984 JD 410B w/cab & regular hoe, Case controls.....	\$22,000
1978 Dynahoe 200 4WD w/cab, side dump bucket.....	\$10,000
1972 Dynahoe 190 with Cab	\$9,500
1974 JD510 with Cab & 16' Backhoe, 80 HP, 8 Speeds, Power Shift, Similar to 3010 Ag.....	\$12,000
1983 JD 510B w/ROPS, Hyd. for Hammer.....	\$22,000
1979 Case 580-C with Cab.....	\$10,000
1984 JD410-B w/ROPS & Extindahoe	\$22,000
1986 JD 410C w/Cab, 1210 hr.....	\$26,000
1985 JD515-B with Cab & side shift Backhoe.....	\$22,000
1987 JD510C w/Cab & Extindahoe, 952 Hrs.	\$35,000
1986 JD 210C w/Cab, 4WD, 1800 Hrs.	\$19,500
1979 JD 410 w/Cab.....	\$12,000
1989 JD 310C Cab, 4WD, 1350 Hrs.....	\$32,000

4 WHEEL DRIVE LOADERS

1989 JD 344E, Cab, 1.63 yd. bucket.....	\$44,000
1987 JD 844 5.5 Yd. Bucket.....	POR
1973 JD 644A w/Cab, 2 5 Yd. Bucket	\$22,500

SKID STEER LOADER

1985 Bobcat 843 w/grapple bucket	\$9,000
1988 Toyota SDK8	\$10,000
Thomas 233 HD Demo, 600 Hrs.....	\$15,000

CRAWLER LOADER

1987 JD 755 w/4-1 bucket cab, 2800 hours.....	\$26,000
1966 JD 350 w/Standard Bucket.....	\$7,500
1984 JD 455D w/4 & 1 Bucket.....	\$22,000
1986 JD 455E w/BH ROPS, Reg. Bucket.....	\$24,000