

# Lancaster Co. DHIA

## dhia Monthly Report

Pennsylvania Dairy Herd Improvement Association

**BREED CODES:**

- 1 Ayrshire
- 2 Guernsey
- 3 Holstein
- 4 Jersey
- 5 Brown Swiss
- 8 More Than One Breed
- G Grade
- B Grade and Registered

RED ROSE DAIRY HERD IMPROVEMENT ASSOCIATION OF LANCASTER COUNTY  
JANUARY 1992

A Registered Holstein cow owned by Earl & Anna Mae Reiff, 61 Hahnstown Road, Ephrata, completed the highest 305 day lactation. Mitzie produced 29,717 lbs. of milk, 999 lbs. of protein with a 3.3% test.  
Second high lactation was completed by a Holstein cow owned by Dave & Jodi Findley, 350 Drytown Road, Holtwood. Glad produced 29,783 lbs. of milk, 956 lbs. of protein with a 3.2% test in 305 days.

**FIRST 305 DAYS OF LACTATION WITH 730 OR MORE LBS. OF PROTEIN.**

OWNER - COW's Name	BREED	AGE	DAYS	MILK	PRO-TEIN	PRO-TEIN	FAT	FAT
Earl & Anna Mae Reiff	RH	4-3	305	29,717	3.3	999	3.5	1064
Dave & Jodi Findley	RH	3-2	305	29,783	3.2	956	3.3	1006
Glad	RH	5-5	305	27,925	3.1	871	2.8	801
Jigel	GrH	4-4	305	24,514	3.0	754	2.8	698
Spring Belle Farm	RH	5-2	305	29,929	3.1	934	3.8	1147
March	RH	11-11	305	24,538	3.3	813	3.7	922
Mindy	RH	2-0	305	24,151	3.0	746	3.6	886
Tulip	RH	5-0	305	27,494	3.2	904	4.4	1222
Edgefield Farm	RH	5-6	305	25,434	3.1	801	3.3	859
Gda	RH	8-2	305	27,286	2.8	775	3.4	934
Godie	RH	3-3	305	23,643	3.2	770	3.8	916
Toptrix	RH	6-6	305	25,953	3.4	899	3.6	935
Vaspar	RH	4-8	305	25,518	3.1	806	3.6	919
Star Point Holsteins	RH	2-11	305	22,268	3.5	780	3.6	817
Becky	RH	5-5	305	25,743	3.4	899	4.6	1198
Bopsy	RH	4-8	305	27,249	3.1	865	2.9	814
John G. Good	RH	4-6	305	26,103	3.1	812	3.4	891
Heidi	RH	4-4	305	26,769	2.9	780	2.5	691
Endora	RH	4-2	305	24,189	3.2	777	4.1	994
Falcon	RH	9-5	305	25,301	2.9	739	3.5	897
Freida	RH	4-9	305	27,099	3.2	891	4.3	1186
Fleece	RH	4-7	305	26,565	3.1	838	3.8	1026
Florida	RH	3-10	305	28,193	3.1	890	2.7	785
Anita	GrH	4-7	305	28,341	3.1	887	2.9	835
Robert & Linda Sensenig	GrH	3-9	305	25,273	3.4	879	4.2	1066
22	RH	7-3	305	27,400	3.1	861	3.7	1022
3	GrH	3-7	301	24,569	3.1	762	3.9	969
Calvin L. Zimmerman	GrH	3-5	305	25,660	2.9	754	3.2	841
Thelma	GrH							
Andrew G. Miller								
20								
J. Harold Fritz								
73								
20								
95								
76								

Amos E. Stoltzfus	GrH	4-10	305	26,855	3.2	876	3.3	910
Linda								
John B. Groff	RH	7-1	305	31,356	2.7	875	3/0	957
Dandy								
Shelmar Acres	RH	4-10	305	28,536	3.0	874	3.2	912
Vasht 46								
Robert Kauffman Jr.	RH	6-8	305	26,738	3.2	872	3.8	1036
Farrah	RH	8-8	305	28,115	3.0	857	3.8	1077
Suette	RH	5-7	305	26,873	3.1	843	4.0	1074
Joan								
Warren Z. Good	RH	4-3	305	28,915	3.0	871	3.2	951
Millie								
Walnut Run Farm	GrH	4-5	305	29,601	2.9	868	3.2	954
707	RH	7-3	305	27,985	3.0	844	3.0	856
530	GrH	5-4	305	27,643	2.8	795	3.3	917
620	GrH	4-6	305	26,261	2.9	783	3.7	976
708	GrH	4-2	305	27,855	2.7	778	3.2	907
745								
Wea-Land Farm	RH	6-2	305	27,262	3.1	864	3.3	915
Sammy	RH	5-6	305	26,888	3.0	829	3.9	1049
Jill								
Harvey W. Stoltzfus	GrH	4-5	305	25,360	3.4	864	3.8	986
104 D	RH	6-8	305	26,489	3.0	807	3.6	965
Denise	GrH	3-5	305	23,413	3.4	803	3.7	873
29 D	GrH	5-4	305	25,052	3.1	793	3.5	881
52D	RH	5-8	305	22,981	3.2	747	3.7	872
Martha	RH	5-8	305	27,019	2.7	743	3.5	967
Danelle								
Jonas O. Sensenig	GrH	6-4	303	27,928	3.0	857	3.3	937
10								
Tom Zartman	RH	5-2	305	28,667	2.9	855	3.7	1069
194	GrH	3-5	305	27,068	3.0	822	3.9	1076
276								
Nevin S. Horning	GrH	4-4	305	26,269	3.2	855	2.9	767
Teasle	GrH	4-0	305	27,555	3.0	842	3.2	885
Rayon								
Vernon R. Umble & Son	RH	3-4	305	25,173	3.3	853	3.4	859
Beverly	RH	5-9	305	26,474	3.1	828	3.4	918
Petunia								
J. Ray Ranck	GrH	5-5	305	28,886	2.9	850	2.9	850
Sue	GrH	7-10	305	24,481	3.1	775	3.7	928
Firebird	RH	6-1	305	25,741	2.9	767	3.5	916
Maid	RH	4-8	305	24,494	3.0	753	3.9	965
Topaz	GrH	4-6	305	21,333	3.5	750	3.6	776
Vivian								
Kreider Dairy Farms	GrH	3-10	305	28,240	2.9	845	3.0	868
860	GrH	3-3	305	24,764	3.2	802	3.8	941
130	GrH	5-1	305	24,425	3.2	783	3.1	769
962	GrH	3-2	305	23,847	3.2	771	3.5	844
885	GrH	3-11	305	22,111	3.3	745	3.5	779
997	GrH	3-2	305	21,748	3.3	733	3.5	766
30								
Tritown Farm	RH	4-9	305	26,113	3.2	844	3.9	1042
Lucy								
David W. Sweigart	GrH	3-0	305	26,195	3.2	843	3.2	853
88	GrH	3-0	305	26,889	3.0	831	2.8	758
9	GrH	4-2	305	19,836	3.8	760	4.4	877
26								
Richard G. Wenger	RBRWS	5-5	305	25,304	3.3	842	3.6	912
Mariete	RBRWS	5-4	305	19,825	3.9	792	4.1	824
Jani								
Mervin S. Stoltzfus	GrH	8-6	305	26,663	3.1	839	3.4	924
2	GrH	3-1	305	22,965	3.1	732	3.9	896
Silver								
Welsh-Vista Farms	RH	3-4	305	27,782	3.0	826	3.0	859
81	RH	4-7	302	24,410	3.3	805	3.8	935
84								
Maplebrink Farm	GrH	4-6	305	23,745	3.5	837	4.1	975
48	GrH	4-9	305	23,779	3.2	765	4.0	956
48								
Herbert H. Benner	GrH	3-7	305	30,217	2.7	833	3.0	921
26 Casey								
Blue Springs Farm	GrH	5-2	305	26,270	3.1	830	3.4	894
12								
Running Springs Farm	RH	6-11	305	25,998	3.1	830	4.0	1053
Vallie								

(Turn to Page C9)

# More than seed...

"The W-L I planted two years ago is giving me better yields and higher protein than any previous crop. I had a public variety in this field last time and I had to take it out in the third year. This W-L alfalfa is sure to go a full four."



For more than 25 years, W-L alfalfas have been bred, tested and produced to give high yields, leafy, fine-stemmed forage with long stand persistence and multiple pest and disease resistance. For the best return on your investment, you can't afford less than W-L.

## Solutions.



A product of W-L Research, Inc., 2000 Oak St., Bakersfield, CA 93301, (805) 327-4491 • Telex 682460 As a condition of sale, please note Statement of Limited Warranty and Liability on all W-L orders and tags

Distributed by:

## FARMERS SUPPLY

515 N. Franklin St.  
Lancaster, PA  
(717) 394-7127

## GOOD BULLS-GOOD PRICES!



### 29H5603 FAIR-HILL TRANSFORMER

\$263 PRO.  
+2659 PTA MILK  
+ 115 CFP  
+ 1.39 PTA TYPE  
A.I. PROVEN 46d/30h  
\$8.00 SEMEN PRICES

USDA/HA 7-91

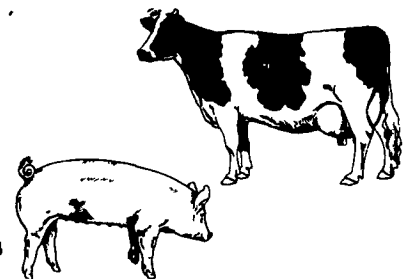
717-733-0094

## Problem Water?

Odor? Bad Taste? Stains? Iron? Manganese?  
Mineral Buildup? Color? Bacteria? Virus?  
Harmful Micro-organisms? Hydrogen Sulfide?  
THM Precursors? Other Contaminants?

### Do You Have Any Problems With:

- \* Scours
- \* Digestion
- \* Mastitis
- \* Breeding
- \* Small Litter Size
- \* Too Much Medication
- \* Milk Production
- \* Poor Feed Efficiency
- \* Algae in Drinking Cups
- \* Bad Conception Rate



### Could Water Be Your Problem? Complete Farm Water Treating System

A Farm Water System that is designed to clean the water on your farm with one of nature's most powerful purifying agents — Condensed Oxygen (Ozone).



335 Quarry Rd., Leola, Pa. 17540  
717-656-8380