

**Greencastle Livestock**

Greencastle, Pa.

Monday, Feb. 17, 1992

TOTAL CATTLE: 63 HEAD. SLAUGHTER CATTLE RECEIPTS: 501 HEAD.

SLAUGHTER STEERS: 109 HEAD. TREND STEADY. HIGH CHOICE AND PRIME 2-4 76.00-78.25; CHOICE 2-3 95.00-107.50; CHOICE 2-3 107.50-137.50; CHOICE 2-3 OVER 1375 LBS.: 66.00-73.75; CHOICE 4 ALL WEIGHTS 65.00-72.75; SELECT & CHOICE 1-2 950-1100 LBS. 64.00-72.00; SELECT & CHOICE 1-2 1100-1375 LBS. 64.00-71.00; SELECT & CHOICE 1-2 OVER 1375 LBS. 62.00-69.00.

HOLSTEINS: CHOICE 2-3 1050-1450 LBS. 61.00-66.00; SELECT 1-2 1050-1450 LBS. 56.00-60.50.

SLAUGHTER HEIFERS: 55 HD. TREND: STEADY. CHOICE 2-3 850-1000 LBS. 68.00-74.00; CHOICE 2-3 1000-1250 LBS. 71.00-77.00; CHOICE 4 ALL WEIGHTS 60.00-68.00; SELECT & CHOICE 1-2 850-1000 LBS. 63.00-72.50; SELECT & CHOICE 1-2 1000-1250 LBS. 66.00-74.00.

HOLSTEINS: CHOICE 2-3 1000-1350 LBS. 60.00-65.75; SELECT & CHOICE 1-2 1000-1350 LBS. 54.00-59.00.

SLAUGHTER BULLS: 24 HD. TREND: STEADY TO 2.00 HIGHER. YIELD GRADE 1 ALL WEIGHTS 62.00-71.00; YIELD GRADE 2 ALL WEIGHTS 55.00-61.25.

BULLOCKS: 6 HEAD. CHOICE 1150-1375 LBS. 65.00-69.00; SELECT 1-2 950-1250 LBS. 64.00-70.00.

COWS: 307 HD. STEADY TREND. BREAKING UTILITY & COMMERCIAL 44.00-49.00; CUTTER & BONING UTILITY 45.00-51.25; CANNER & LOW CUTTER 44.00 & DOWN.

STOCKER & FEEDER CATTLE RECEIPTS: 130 HD. TREND: VERY GOOD DEMAND. BEEF TYPES: 200-400 LBS. STEERS 81.00-115.00, BULLS 80.00-100.00, HEIFERS 76.00-95.00; 400-600 LBS. STEERS 78.00-86.00, BULLS 70.00-84.00, HEIFERS 70.00-83.00; 600-800 LBS. STEERS 70.00-80.00, BULLS 60.00-76.00, HEIFERS 65.00-72.00; 800-975 LBS. 60.00-70.00, BULLS 56.00-66.00, HEIFERS 60.00-68.00.

HOLSTEINS & DAIRY CROSS: 200-400 LBS. STEERS 70.00-90.00, BULLS 70.00-80.00, HEIFERS 80.00-115.00; 400-600 LBS. STEERS 60.00-67.50, BULLS 60.00-65.00, HEIFERS 50.00-65.00; 600-800 LBS. STEERS 58.00-64.50, BULLS 50.00-60.00, HEIFERS 55.00-65.00; 800-975 LB. STEERS 50.00-56.50, BULLS 47.00-54.50, HEIFERS 54.00-61.00.

CALVES: 526 HD. TREND: STEADY TO STRONGER. CHOICE 150-300 LBS. UP TO 115.00; GOOD 150-300 LBS. UP TO 90.00; GOOD 100-150 LBS. UP TO 84.00; GOOD 80-100 LBS. UP TO 85.00; STANDARD 80-100 LBS. UP TO 78.00; STANDARD 80 LBS. AND DOWN UP TO 70.00.

CALVES RETURNING TO THE FARM: TREND: STEADY TO STRONGER. HOLSTEIN BULLS OVER 100 LBS. UP TO 182.00; UNDER 100 LBS. UP TO 162.00; HOLSTEIN HEIFERS OVER 100 LBS. UP TO 177.50; UNDER 100 LBS. UP TO 160.00; BEEF TYPE BULLS OVER 90 LBS. UP TO 180.00.

SHEEP & LAMBS: 80 HD. LAMBS: TREND: STEADY AND STRONGER. CHOICE 80-100 LBS. 56.50-63.50; 100-120 LBS. 54.00-60.00; 120 AND OVER 40.00-48.00; MEDIUM & GOOD ALL WEIGHTS 52.00-62.00; LIGHT LAMBS 80.00-100.00.

SHEEP: EWES LEAN 24.00-31.50; EWES FAT 22.00-30.00; YEARLINGS 34.00-40.00; BUCKS 20.00-28.50.

GOATS: 175 HD. SMALL 14.00-29.00; MEDIUM 30.00-58.00; LARGE 59.00-100.00.

HOGS, SOWS & BOARS: 157 HD. TREND: 2.00 HIGHER. 210-250 LBS. 41.00-42.50, 250-260 LBS. 39.00-41.50;

260-270 LBS. 35.50-39.50; 270-300 LBS. 36.00-37.50.

LIGHT HOGS: 140-180 LBS. 30.00-34.50; 180-210 LBS. 33.00-39.00.

SOWS: TREND: STEADY TO 1.00 HIGHER. GOOD SOWS UNDER 400 LBS. 30.00-34.50; GOOD SOWS OVER 400 LBS. 30.00-34.50; CULL SOWS ALL WEIGHTS 28.00 & DOWN.

BOARS: TREND: 1.00-2.00 HIGHER. 180-210 LBS. 25.00-30.00; 210-260 LBS. 26.00-31.50; 260-300 LBS. 24.00-30.50; 300 LBS. & OVER 22.00-26.50.

SALE EVERY MONDAY AT 2:00 P.M. & EVERY THURSDAY AT 1:00 P.M.

HAY & STRAW SALE EVERY MONDAY & THURSDAY AT 11:30 A.M. SPECIAL FEEDER PIG SALE: SATURDAY, FEB. 22, 1992 AT 1:00 P.M. SPECIAL FEEDER CATTLE SALE FRIDAY, MAR. 6, AT 7:15 P.M.

**Aberdeen Sales Company, Inc.**

Complete Auction & Appraisal Service Churchville, Md.

Wednesday, February 19, 1992

SLAUGHTER STEERS: MARKET STEADY. CHOICE 2-4 1100-1400 LBS. 73.50-78.00; SELECT & LOW CHOICE 1000-1500 LBS. 69.00-73.00; HOL. STEERS HI CHOICE & PRIME 1250-1400 LBS. 63.00-68.00; CHOICE 1200-1500 LBS. 63.00-67.00; SELECT ALL WEIGHTS 68.00-72.00.

SLAUGHTER HEIFERS: MARKET

**HAY, STRAW & GRAIN SALE**  
Every Thursday at 1 p.m.  
Auction will continue all year long  
Vintage Sales Stables, Inc.  
(Rt. 30, 10 miles east of Lancaster in Paradise, PA)

For info.

717-442-4181 business  
215-458-8518 home

L. Robert Frame, Sr. president  
Glenn S. Frame Mgr.

STEADY. CHOICE & PRIME 950-1300 LBS. 73.00-76.00; SELECT ALL WEIGHTS 900-1400 LBS. 66.00-71.00. COWS: MARKET 2.00 HIGHER. BRK. UT. & COMM. 2-4 BULK 47.00-51.50; HI DRESSING 51.00-55.00; CUTTER AND BONING UTILITY 46.00-48.50; HIGH DRESSING 39.00-52.00; CANNER AND CUTTERS 44.00-48.00; LOW DRESSING 44.00 AND DOWN.

BULLS: MARKET STEADY. ALL WEIGHTS 1100-1900 LBS. 59.00-71.00.

VEAL CALVES: MARKET STEADY. CHOICE & PRIME 200-400 LBS. 90.00-105.00; HI GOOD & LOW CHOICE ALL WEIGHTS 75.00-90.00.

FARM CALVES: MARKET 15.00 HIGHER. HOL. BULLS 100-125 LBS. 135.00-172.00; HOL. BULLS 85-95 LBS. 120.00-147.00; HOL. HEIFER CALVES 100-120 LBS. 138.00-170.00; SMALL FRAME 70-105 LBS. 78.00-130.00; SLAUGHTER CALVES ALL WEIGHTS 69.00-77.00.

FEEDER CATTLE: MARKET 8.00 HIGHER. BULLS & STEERS 400-900 LBS. 72.00-94.00; HEIFERS 300-700 LBS. 63.00-79.00.

LAMBS: MARKET STEADY. CHOICE & PRIME 90-110 LBS. 61.00-73.00; LIGHTER LAMBS

80.00-105.00; EWES - HEAVY 18.00-26.00; EWES - LIGHT 24.00-37.00. GOATS: MARKET STEADY. SMALL 18.00-30.00; MEDIUM 35.00-55.00; LARGE 80.00-110.00. HOGS: MARKET 2.00 HIGHER. 210-250 LBS. 40.50-43.00; 255-300 LBS. 35.00-41.00; SOWS - HEAVY 30.00-34.00; SOWS - LIGHT 28.00-32.00; BOARS ALL WEIGHTS 21.00-26.00.

**Isennock Auction**

New Park, PA

February 17, 1992

Report supplied by auction

SLAUGHTER COWS: 50.00 & DOWN.

SLAUGHTER BULLS: 735-1220 LBS. 65.00-69.00.

HEIFERS: 560-690 LBS. 62.00-66.50. FARM CALVES: 110-120 LBS. 135.00-145.00; 90-100 LBS. 112.00-140.00; 75-85 LBS. 87.00-125.00; HEIFERS CALVES UP TO 122.00.

STOCK BOARS: 200 LBS. 27.00-29.00.

HOGS: 200-260 LBS. 40.00-45.00.



Notice Of Time Change (Hay Sale) Starting Jan. 1, 1992 (New Year's Day)

Hay And Straw Sales Will Start At 10 A.M. Every Wed.

**GOOD'S AUCTION**  
111 North Maple Ave.  
Leola, PA 17540  
717-656-8911  
717-656-9554

**HOOVER'S HAY AUCTION**

2nd & 4th Fridays Of Each Month 12 Noon

Located in Dauphin Co., 1 mile east of Gratz, along Rt. 25.

Gerald Hoover, #AU-002794L 717-365-3803

**HORSE SALE**  
MARCH 6, 1992  
10:00 A.M.

**NEW HOLLAND SALES STABLES INC. THE ACTION AUCTION**

2 HERD DISPERSALS

Load Fresh and Springer Cows From N.Y. State

Sell Wed. Dairy Sale See Page E42 for details.

LIVESTOCK IS OUR ONLY BUSINESS

**MONDAY**

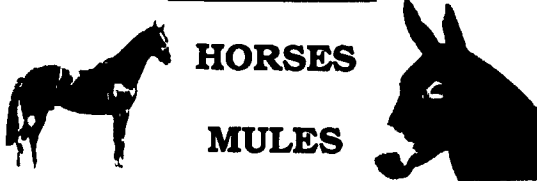
**SLAUGHTER HOGS**



**EARLY BIRD HOG SALE**  
8:00 A.M.

Sell Your Hogs At New Holland Sales Stables, Inc. See them weighed, sold and pickup your check.

**10:00 A.M.**



**HORSES**  
**MULES**

**1:30 P.M.**

**BEEF SALE**



**SHEEP**  
**GOATS**  
**CALVES**



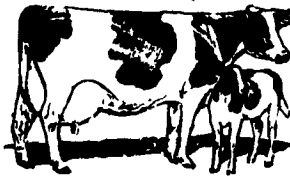
**WEDNESDAY**

**HEIFER SALE**

**11:00 A.M.**

**COW SALE 12:00 NOON**

**HEIFERS**  
**BULLS**



**DAIRY**  
**COWS**

We have the usual run of 50 to 100 Heifers, all ages. Loads of fresh cows and springers from our regular shippers. Also some local fresh cows and springers.

**1:30 P.M.**

**FEEDER PIG SALE**



Pigs are accepted after 6:30 A.M. State graded from 8 to 12. Dairy Barn and Feeder Pig Barn are cleaned and disinfected weekly for your protection.

**THURSDAY**

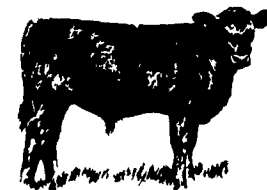
**Beef Auction**

**10:00 A.M.**

**BULLS**  
**STEERS**  
**BEEF COWS**

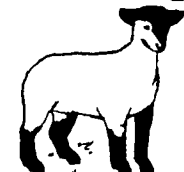


**1:00 P.M.**  
**STOCKERS**  
**&**  
**FEEDERS**



**12:00 NOON**

**SHEEP**  
**GOATS**  
**CALVES**



**NEW HOLLAND SALES STABLES, INC.**

12 Miles East of Lancaster Off Route 23, New Holland, Penna.

**MANAGERS**

Norman & David Kolb - 717-397-5538

**Field Representatives**

Luke Eberly - 215-267-8608 738-1865  
Homer Eberly - 215-267-3047  
Ron Ranck - 717-656-9849

**Sale Barn Office Manager**  
Roger Floyd - 717-354-4341  
FAX # 717-355-0706

**Order Buyer**  
Paul Good - 215-445-6662