

Lancaster Co. Livestock Market Auctions

Lancaster Livestock Auction

Lancaster, Pa.
Monday, February 17, 1992
Cattle Calves Hogs Sheep Goats
Monday's Auction
1157 71 180 1194 331
Last Monday's Auction
1206 64 93 1300 220
Last Year's Auction
807 52 167 1071 282

CATTLE: Slaughter steers 50-1.00 lower, instances 1.50 lower early, extremes 2.00 lower on weights over 1400 lb; slaughter heifers steady; cows 1.00-2.00 higher; bullocks steady; bulls firm to 1.00 higher. Supply included 68% slaughter steers of which 25% were Holsteins, 11% slaughter heifers, 15% cows, and 6% bulls.

SLAUGHTER STEERS: Choice 2-4 1050-1425 lb 73.50-76.50, early 72.75-73.50, 1425-1535 lb 71.60-73.25; few High Choice and Prime 2-4 1290-1375 lb 76.50-76.85; Select and low Choice 2-3 1050-1425 70.00-73.00, few 73.00-75.25, couple lots 1425-1500 lb 68.00-72.00.

HOLSTEINS: Choice 1100-1550 lb 60.50-66.25; few High Choice and Prime 1350-1525 lb 66.50-67.50; few Select 1100-1450 lb 58.00-60.50.

SLAUGHTER HEIFERS: Choice 2-3 940-1350 lb 69.25-73.50; few Choice 2 1050-1200 lb 73.50-74.75; Select 2-3 950-1250 lb 66.00-68.00.

COWS: LO DRESSING BULK HI DRESSING Breaking Utility & Commercial 2-3 48.50-51.50 51.50-53.00 Commercial 3-4 46.00-49.00 Cutter & Boning Utility 1-2 48.00-50.50 50.50-53.00 Canner & low Cutter 42.00-44.50 44.50-48.00.

BULLOCKS: Choice 2-3 1050-1300 lb 66.00-68.75; Select 1-3 1100-1300 lb 64.00-65.50.

BULLS: Yield grade 1 1350-1900 lb 64.25-69.25, four head 1580-2115 lb 71.75-74.25, eight head 2125-2695 lb 61.50-64.00; yield grade 2 1100-1600 lb 59.75-64.00, few low dressing 55.75-59.00.

CALVES: Vealers steady; slaughter calves fully steady. Demand good for Holstein bulls to return to farm.

VEALERS: Few Choice 180-325 lb 100.00-115.00; high Good and low Choice 200-325 lb 75.00-90.00, 80-115 lb 75.00-85.00.

SLAUGHTER CALVES: Good and Choice 350-475 lb 70.00-85.00.

RETURNED TO FARM: Small supply 90-120 lb Holstein bulls 140.00-170.00.

HOGS: Small supply barrows and gilts 1.00-1.50 lower; sows 1.00-3.00 higher, instances 4.00 higher on weights over 500 lb.

BARROWS AND GILTS: US 1-3 210-245 lb 40.00-41.00. US 1-2 Few 215-235 lb 41.50-42.00.

SOWS: US 1-3 300-500 lb 27.00-30.00. 500-650 lb 30.00-35.00.

BOARS: 350-650 lb 25.00-27.50.

SHEEP: Slaughter lambs steady; slaughter ewes fully steady. Supply included 60% woolled lambs, 20% new crop lambs, with the balance slaughter

Vintage Livestock

Paradise, PA
Feb. 18, 1992

CATTLE 724...USDA... Supply included 35% slaughter steers and 57% cows ... Compared with Monday's market: Slaughter steers uneven Choice 2 to mostly 3 firm to .50 higher, 3-4 weak to .50 lower. Heifers steady; Cows steady; Bulls scarce. Choice steers 2-4, 1100/1400 lbs. 72.85-76.75, Choice 2-3, 1100/1400 lbs. 77.00-78.75, 6 head 79.00-79.50, with 3 head 80.00-80.75, Choice mostly 3 1400/1500 lbs. 70.00-73.75, Choice 3-4, 1200/1450 lbs. 69.00-73.50; Select and Low Choice 2-3, 1100/1400 lbs. 70.00-73.00, few select 2-3 1100/1375 lbs. 66.75-70.00, Choice Heifers 2-3, 990/1325 lbs. 70.00-73.75; one lot Select 2-3 1040 lbs. 65.75. Breaking Utility & Commercial sl. cows 2-3 bulk 48.50-52.00 high dressing at 52.00-54.25, Cutter & Boning Utility 1-2 bulk 47.00-50.00, high dressing 50.00-52.50; Canner & Low Cutter, low dressing 41.00-44.00, bulk 44.00-47.50. Couple Yield Grade 1, 1350/1950 lbs. sl. bulls 64.50-66.75, No. 2, 1200/1800 lbs 59.00-61.00.

CALVES 904... Supply included 773 in graded sale of which 92% sold to return to farm ... Vealers steady although choice not fully tested. Couple Choice 160/200 lbs. 92.00-93.00, High Good and Low Choice 80/105 lbs. 84.00-87.00, Standard and Low Good 60/75 lbs. 63.00-80.00. Farm Calves: 25 head Holstein Bulls 120/125 lbs. 137.00, 80 head 100/115 147.00-151.00, 150 head 100/105 lbs. 156.00-160.00, 50 head 95 lbs. 164.00-165.00, 50 head 90 lbs. 156.00-157.00, and 50 head 80/85 lbs. 123.00-124.00; 80 head Small Frame 100/115 lbs. 125.00-148.00, 50 head 90/95 lbs. 92.00-95.00, and 35 head 80/85 lbs. 84.00-87.00. 40 head Hol. Heifers 100/120 lbs. 182.00-192.00, 25 head 90/95 lbs. 135.00, 20 head 80/85 lbs. 110.00, 40 head Small Frame 70/95 lbs. 81.00-92.00.

SHEEP 0...No market test. - all per cwt.
GOATS 0...No market test. - all per head.

WOOLED LAMBS: Choice 80-110 lb 60.00-70.00; 110-140 lb 50.00-60.00; few 50-80 lb 70.00-80.00.

NEW CROP LAMBS: Choice 20-50 lb 80.00-110.00, few 110.00-125.00; 50-75 lb 75.00-100.00; 75-100 lb 70.00-75.00.

SLAUGHTER EWES: Utility and Good 30.00-40.00; Yearlings and two-year olds 35.00-50.00.

GOATS: All goats sold by the head. Large 75.00-100.00. Medium 50.00-65.00, few Thin 40.00-50.00. Small, mainly kids, 40.00-50.00; few Thin 30.00-40.00.

Lancaster Livestock Auction

Wednesday's market report has been discontinued until further notice because of insubstantial receipts.

Eighty-Four Livestock

Eighty-Four, Pa.

Monday, February 17, 1992

Report Supplied by Auction

CATTLE 258. STEERS, HIGH CHOICE AND PRIME 70.00-75.50; SELECT 68.00-72.00, STANDARD 60.00-67.50; UTILITY 48.00-58.00. HEIFERS, CHOICE 68.00-74.50, SELECT 65.00-69.50, STANDARD 58.00-64.00, UTILITY 50.00-56.00.

COWS: UTILITY AND COMMERCIAL 50.50-53.50; CANNERS AND BONERS 46.00-50.00; CANNERS AND LOW CUTTERS 42.50-45.00; SHELLS 42.00 AND DOWN.

BULLS: YG#2 1000-1800 LBS. 52.00-59.50.

FEEDER STEERS: 300-600 LBS. 75.00-110.00; HEIFERS 65.00-90.00; BULLS 75.00-92.50.

CALVES: 241 HEAD. VEALERS CHOICE 90.00-108.00, GOOD 75.00-95.00, STANDARD AND GOOD 65.00-82.50, UTILITY 65.00 AND DOWN.

FARM CALVES: APPROX. 90-120 LBS. HOLSTEIN BULLS #1 125.00-160.00, #2 85.00-135.00; BEEF BULLS 125.00-160.00; HOLSTEIN HEIFERS 100.00-160.00; HOLSTEIN BULLS #2 80.00-135.00; BEEF BULLS 1.00-175.00; HOLSTEIN HEIFERS 100.00-160.00, BEEF HEIFERS 100.00-150.00.

HOGS: 70 HEAD. #1&2 38.50-39.50, #2&3 260-297 LBS. 35.50-37.50.

SOWS: UNDER 500 LBS. 30.00-37.00, OVER 500 LBS. 29.50-30.50.

BOARS: 27.00-30.00.

FEEDER PIGS: 10. #1-3 20.00-44.00 HEAD.

SHEEP AND LAMBS: 157 HEAD. SPRING, HIGH CHOICE AND PRIME 51-59 LBS. 58.00-70.50, 62-75 LBS. 65.00-75.00; GOOD AND CHOICE 80-101 LBS. 52.00-58.00; FEEDER LAMBS GOOD 47-80 LBS. 50.00-65.50, UTILITY 51.50; EWES 25.00-35.50.

GOATS: 34 HEAD. LGE. 67.00-71.50, MED. 33.00-44.00, SM. 17.00-32.00, ALL PER HEAD.

Aberdeen Sales Co. Inc.

Livestock Auction Market
Harford County, Md.

Hay - Straw - Grain Sale

Saturday, February 15, 1992

ALFALFA MIXED HAY: 2.30 BALE.

CLOVER MIXED HAY: 2.20 BALE.

GRASS MIXED HAY: 2.00 BALE.

TIMOTHY HAY: 2.40 BALE.

NEXT SALE FEB. 22, 11 A.M.

New Holland Livestock

Feb. 20, 1992

	Cattle	Calves	Sheep	Goats
Today	1088	618	116	69
Last Thursday	831	599	92	70
Last Year	960	593	159	70

CATTLE: Slaughter steers steady, best demand for Choice and Prime 1250-1425 lb; slaughter heifers fully steady; cows 1.00 higher; bullocks scarce; bulls steady to weak, although Yield grade 1 not fully tested. Supply included 48% slaughter steers and 34% cows.

SLAUGHTER STEERS: Choice 2-4 1100-1450 lb 73.00-76.75, few 77.00-77.60; High Choice and Prime 2-4 1250-1475 lb 77.50-78.50, one lot 1570 lb 75.10; Choice 3-4 1450-1550 lb 70.00-75.50, few head 1620-1675 lb 66.75-68.75; Select and low Choice 2-3 1100-1425 lb 70.00-74.25.

HOLSTEINS: High Choice and Prime 1200-1500 lb 66.75-69.10; Choice 1300-1650 lb 62.75-67.00; few Select 1200-1550 lb 59.00-60.50.

SLAUGHTER HEIFERS: Choice 2-3 995-1280 lb 71.00-73.75; one lot High Choice and Prime mostly 3 1370 lb 76.25; Select 2-3 950-1200 lb 68.00-69.50.

COWS: LO DRESSING BULK HI DRESSING Breaking Utility & Commercial 2-3 47.75-51.50 51.50-53.00. Cutter and Boning Utility 1-3 47.75-51.00 51.00-53.25. Canner and low Cutter 44.50-47.50, few 47.50-49.50.

BULLOCKS: Few Choice 2-3 1050-1300 lb 65.00-68.25; couple Select 2 1000-1250 lb 59.25-65.00.

BULLS: Yield grade 1 1300-2100 lb 63.75-67.00, couple 68.00-69.25; Yield grade 2 1050-1550 lb 59.00-63.50, few low dressing 56.00-58.00.

CALVES: Vealers steady. Demand good for Holstein bulls and heifers to return to farm.

VEALERS: Few Choice 290-330 lb 94.00-95.00, couple High Choice and Prime 180-360 lb 109.00-114.00; high Good and low Choice 220-380 lb 84.00-93.00, 80-110 lb 80.00-90.00; Standard and low Good 65-85 lb 57.00-75.00.

SLAUGHTER CALVES: Few Choice 400-455 lb 81.00-83.00.

RETURNED TO FARM: Bulk 95-125 lb Holstein Bulls 130.00-159.00, few 160.00-165.00; small frame 95-115 lb 100.00-130.00, 80-90 lb 87.00-100.00; bulk 90-120 lb Holstein Heifers 135.00-162.00, few 170.00-187.00; small frame 85-115 lb 110.00-130.00.

SHEEP: Slaughter lambs steady; few slaughter ewes steady. Supply included 17% woolled lambs, 48% New Crop Lambs, with the balance slaughter ewes.

WOOLED: Few Choice 120-150 lb 54.00-62.00; couple Choice 90-105 lb 68.00-75.00.

NEW CROP LAMBS: Choice 30-40 lb 125.00-150.00, 40-50 lb 100.00-130.00, with 50-65 lb 86.00-100.00.

SLAUGHTER EWES: Few Utility and Good 22.00-32.00.

GOATS: All goats sold by the head. Large 70.00-90.00, 12 head 94.00-110.00; Medium 48.00-72.00; Small, mainly kids, 32.00-46.00, few Thin 25.00-30.00.

Lancaster County Weekly

Feb. 21, 1992

	CATTLE CALVES
THIS WEEK	3200 1580
LAST WEEK	2902 1492
LAST YEAR	2664 1511

CATTLE: Slaughter steers 50 to mostly 1.00 lower, with some early sales as much as 2.00 lower; slaughter heifers steady; bulls firm to 1.00 higher. Supply included 49% slaughter steers, 7% slaughter heifers, 30% cows, 4% bulls, with the balance feeders.

SLAUGHTER STEERS: Choice 2-4 1100-1450 lb 72.85-76.75, few 77.00-77.60; High Choice and Prime 2-4 1250-1475 lb 76.50-78.50, one lot 1570 lb 75.10; Choice 2-3 1100-1400 lb 77.00-78.75, few 79.00-80.00; Choice mostly 3 1400-1550 lb 70.00-74.00; Choice 3-4 1200-1550 lb 69.00-73.50; Select and low Choice 2-3 1050-1400 lb 70.00-73.50; few Select 2-3 1100-1375 lb 66.75-70.00.

HOLSTEINS: High Choice and Prime 1200-1525 lb 66.50-69.10; Choice 1100-1650 lb 60.50-67.00; Select 1100-1450 lb 58.00-60.50.

SLAUGHTER HEIFERS: Choice 2-3 940-1350 lb 69.25-73.75; few Choice 2 1050-1200 lb 73.50-74.75; one lot High Choice and Prime mostly 3 1370 lb 76.25; Select 2-3 950-1250 lb 66.00-69.50.

COWS: LOW DRESSING BULK HIGH DRESSING Breaking Utility & Commercial 2-3 47.75-52.00 52.00-54.25. Commercial 3-4 46.00-50.00. Cutter and Boning Utility 1-2 47.00-51.00 51.00-53.25. Canner and low Cutter 42.00-44.50 44.50-48.00.

BULLOCKS: Choice 2-3 1050-1325 lb 65.00-68.75; Select 1-3 1000-1300 lb 59.25-65.50.

BULLS: Yield grade 1 1300-2100 lb 63.75-69.25, four head 1580-2115 lb 71.75-74.25, eight head 2125-2695 lb 61.50-64.00; Yield grade 2 1050-1600 lb 59.00-64.00, few low dressing 55.75-59.00.

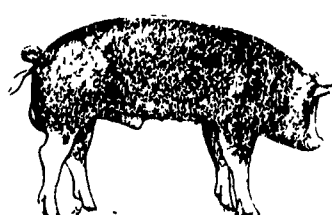
CALVES: Vealers steady; slaughter calves fully steady. Demand good for Holstein bulls and heifers to return to farm.

VEALERS: Choice 180-330 lb 92.00-100.00; couple High Choice and Prime 180-360 lb 109.00-115.00; high Good and low Choice 200-380 lb 84.00-93.00, 80-110 lb 75.00-90.00; Standard and low Good 60-85 lb 57.00-75.00.

SLAUGHTER CALVES: Good and Choice 350-475 lb 70.00-85.00.

RETURNED TO FARM: Bulk 95-125 lb Holstein bulls 130.00-159.00, few 160.00-165.00, few 80-85 lb 120.00-125.00; small frame 90-120 lb 92.00-130.00, 80-90 lb 84.00-100.00.

Bulk 90-120 lb Holstein heifers 135.00-170.00, few 180.00-192.00; small frame 90-115 lb 110.00-135.00, few 70-90 lb 81.00-92.00.



LEBANON VALLEY LIVESTOCK MARKET, INC.

1 mile East of Fredericksburg along Rt. 22
PHONE JONESTOWN 865-2881

Flea Market Auction every Tuesday at 12:30. Tools, Eggs, Produce, etc.
Buyers & Sellers Welcome

LANCASTER STOCK YARDS Open 24 hours a day
365 days a year
(717)394-2611

AUCTIONS

MONDAY
9:00 A.M. - Slaughter Bulls, Heifers, Steers, Cows
10:00 A.M. - Goats, Veal Calves, Lambs
12 Noon - Slaughter Hogs

WEDNESDAY
8:00 A.M. - Slaughter Hogs
10:00 A.M. - Slaughter Bulls, Heifers, Steers, Cows
11:00 A.M. - Veal Calves, Lambs

FRIDAY
11:00 A.M. - Stocker and Feeder Cattle

SATURDAY
8:00 A.M. - Slaughter Hogs

Next Feeder Cattle Sale
Friday, Feb. 28 - 11:00 A.M.

LANCASTER STOCKYARDS, INC.
1147 Lititz Pike, Lancaster, Pennsylvania 17601
Serving The Community For 96 Years

B&R CATTLE CO.
RD 1, Marietta, PA 17547
Office Phone: (717) 653-8164
Specializing In Stockers & Feeders
JOHN BOWMAN
Ph (717) 653-5728
RON RANCK
Ph (717) 656-9849

HAY, STRAW & CORN - SALE -
Please Note New Sale Time!
Starting Jan. 3
Sale Starts 10 AM
Every Friday At 10 AM

GREEN DRAGON MARKET & AUCTION
RD No. 4 Ephrata, Pa. 717-738-1117
1 mile North of Ephrata on N. State St.
Out of State Buyers - Cash or Certified Check Only

VINTAGE SALES STABLES, INC.
SALE TUESDAYS

11:00 A.M.
SLAUGHTER CATTLE AUCTION - STEERS, BULLS, HEIFERS, COWS, FEEDER CATTLE

7:00 P.M.
CALVES, SHEEP, GOATS
* GET CALVES IN EARLY - OUR STATE GRADER STARTS AT 1:00 P.M.

L. ROBERT FRAME, SR., PRESIDENT
BUS (717) 442-4181
BUS (717) 768-8204
HOME (215) 458-8518
IRWIN MARTIN, FIELD REP.
(717) 733-7434
KENNETH E. HERSHEY, FIELD REP.
(717) 442-4874

TRUCKING SERVICE AVAIL.-LOCAL & LONG DISTANCE (RT. 30, 10 MILES EAST OF LANCASTER IN PARADISE, PA)