

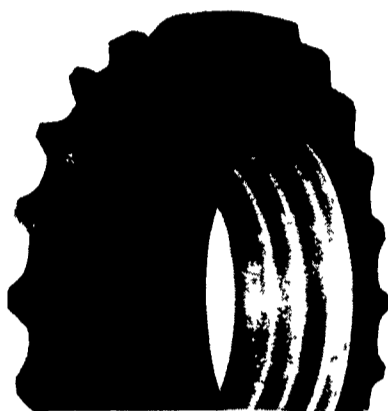
**Buy AMERICAN!
Buy GOODYEAR!
Buy NOW!**

PUT OUR RADIALS TO THE TEST FOR 90 DAYS

Super Traction Radial

Dyna Torque Radial

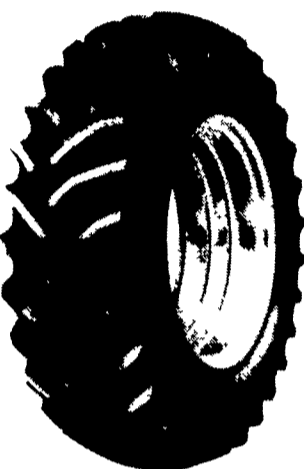
MECHANICAL FRONT WHEEL DRIVE



SUPER TRACTION RADIAL NO RISK OFFER

Buy a pair of Super Traction radials now. If, after 90 days from day of mounting, you are not completely satisfied with the performance of these tires, we will remove them and replace them with new Goodyear Dyna Torque bias ply tires of like size and ply rating and will credit you for the difference.

| SIZE | PLY | PRICE |
|---------|-----|-----------|
| 16.9R26 | 2* | \$ 555.00 |
| 18.4R26 | 2* | \$ 640.00 |
| 23.1R26 | 3* | \$1280.00 |
| 28LR26 | 1* | \$1315.00 |
| 16.9R28 | 2* | \$ 550.00 |
| 16.9R30 | 2* | \$ 590.00 |
| 18.4R38 | 00 | \$ 735.00 |
| 20.8R38 | 2* | \$ 860.00 |
| 20.8R42 | 2* | \$ 940.00 |



DYNA TORQUE RADIAL NO RISK OFFER

Buy a pair of Dyna Torque radials now. If, after 90 days from day of mounting, you are not completely satisfied with the performance of these tires, we will remove them and replace them with new Goodyear Dyna Torque bias ply tires of like size and ply rating and will credit you for the difference.

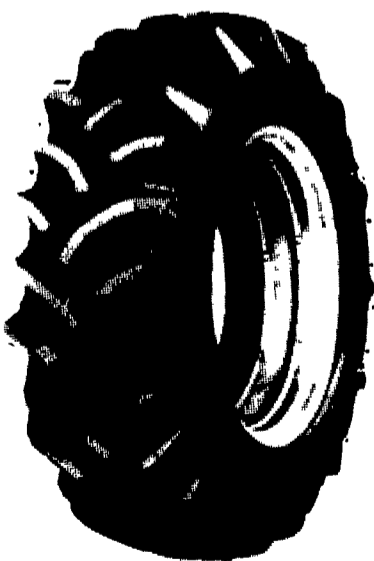
- Revolutionary three-lug/pitch design improves traction and ride.
- Computer-designed "natural" shape casing improves tire body life.
- Radial construction provides better traction, lower fuel and overall costs.

| | | |
|------------|----|-----------|
| 13.6R28 | 3* | \$ 400.00 |
| 14.9R26 | 3* | \$ 470.00 |
| 14.9R28 | 3* | \$ 488.00 |
| 16.9R24 | 2* | \$ 515.00 |
| 14.9R30 | 3* | \$ 532.00 |
| 16.9R28 | 2* | \$ 550.00 |
| 16.9R26 | 2* | \$ 555.00 |
| 16.9R30 | 2* | \$ 589.00 |
| 18.4R26 | 2* | \$ 640.00 |
| 24.5R32 | 1* | \$1090.00 |
| 30.5LR321* | | \$1280.00 |

OTHER SIZES AVAILABLE

| | | |
|---------|----|-----------|
| 15.5R38 | 1* | \$ 450.00 |
| 18.4R34 | 1* | \$ 520.00 |
| 14.9R34 | 3* | \$ 525.00 |
| 18.4R38 | 1* | \$ 535.00 |
| 16.9R38 | 1* | \$ 570.00 |
| 18.4R42 | 2* | \$ 675.00 |
| 20.8R38 | 1* | \$ 715.00 |
| 14.9R46 | 3* | \$ 730.00 |
| 20.8R34 | 1* | \$ 855.00 |
| 20.8R42 | 2* | \$ 940.00 |
| 18.4R46 | 3* | \$1070.00 |

BIAS PLY REAR FARM DYNA TORQUE II



- Excellent traction with long-bar, short-bar lugs.
- Designed for improved stability and roadability, plus reduced vibration.
- High-strength polyester cord body and heavy-duty rim shield help protect tire from damage.

| Size | Ply | Price | Size | Ply | Price |
|---------|-----|----------|---------|-----|----------|
| 8.3-24 | 4 | \$ 95.00 | 16.9-34 | 6 | \$360.00 |
| 9.5-24 | 4 | \$130.00 | 18.4-34 | 6 | \$395.00 |
| 11.2-24 | 4 | \$140.00 | 12.4-38 | 6 | \$230.00 |
| 12.4-24 | 4 | \$180.00 | 13.6-38 | 6 | \$270.00 |
| 13.6-24 | 4 | \$235.00 | 15.5-38 | 6 | \$310.00 |
| 11.2-28 | 4 | \$170.00 | 16.9-38 | 6 | \$400.00 |
| 12.4-28 | 4 | \$190.00 | 18.4-38 | 6 | \$425.00 |
| 13.6-28 | 6 | \$230.00 | 20.8-38 | 8 | \$645.00 |
| 16.9-30 | 6 | \$310.00 | | | |

REAR FARM

| Qty. | Size | Ply | Type | Price |
|------|---------|-----|-----------------|----------|
| 4 | 11.2-24 | 6 | Galaxy TT | \$115.00 |
| 8 | 12.4-24 | 8 | Goodyear DT IIT | \$150.00 |
| 2 | 14.9-24 | 4 | Multi-Trac TT | \$175.00 |
| 2 | 16.9-24 | 6 | Multi-Trac TT | \$210.00 |
| 1 | 16.9R24 | 1* | Dyna Torque Rad | \$200.00 |
| 1 | 16.9-26 | 6 | Multi-Trac TT | \$151.00 |
| 1 | 30.5-32 | 12 | All Weather TT | \$725.00 |
| 2 | 18.4-38 | 6 | Multi-Trac TT | \$345.00 |
| 1 | 18.4R42 | 2* | Ultra-Grip TT | \$225.00 |

LOADER-BACKHOE

| Qty. | Size | Desc. | Price |
|------|---------------|-----------------------------|----------|
| 6 | 11L-15 8 Ply | Harvest King TT | \$75.85 |
| 2 | 11L-16 10 Ply | Harvest King TT | \$86.40 |
| 2 | 14.9-24 8 Ply | Com Tractor R-4 (Armstrong) | \$215.00 |
| 1 | 16.9-24 8 Ply | Alliance TT | \$268.00 |

FRONT FARM

| Qty. | Size | Ply | Desc. | Price |
|------|----------------|--------------------|---------|-------|
| 3 | 75L-15 6 Ply | Harvest King 3 Rib | \$42.00 | |
| 1 | 95L-15 8 Ply | Harvest King 3 Rib | \$65.00 | |
| 10 | 550-16 4 Ply | Harvest King 3 Rib | \$29.75 | |
| 2 | 650-16 6 Ply | Harvest King 3 Rib | \$38.65 | |
| 9 | 1000-16 10 Ply | Harvest King 3 Rib | \$99.00 | |
| 1 | 400-19 4 Ply | Harvest King 3 Rib | \$29.00 | |
| 2 | 111-15 8 Ply | Harvest King 4 Rib | \$79.00 | |

UNIROYAL 1000-15 8 Ply FARM UTILITY \$78.00 Each

FARM UTILITY

11L-16 Contractor Tread 10 Ply \$89.00

| Qty. | Size | Ply | Desc. | Price |
|------|---------|-----|-------------------|----------|
| 1 | 95L-14 | 8 | Harvest King Impl | \$46.00 |
| 4 | 760-15 | 6 | Multi-Rim Impl | \$43.00 |
| 1 | 95L-15 | 8 | Harvest King Impl | \$47.00 |
| 6 | 600-16 | 4 | Multi-Rim Impl | \$31.00 |
| 1 | 600-16 | 6 | Multi-Rim Impl | \$35.00 |
| 1 | 125L-16 | 14 | Harvest King Impl | \$82.00 |
| 6 | 14L-161 | 12 | Armstrong Impl | \$150.00 |

Extended Hours Monday, Feb. 25th 7:00 AM - 10:00 PM

FARM TIRES

| Qty. | Size | Make | 32's | Price Ea. |
|---------------|---------|--------------------------|------|-----------|
| 1 | 13.6-24 | G-Year Power Torque | 5 | \$ 15.00 |
| 2 | 16.9-30 | G-Year Power Torque | 27 | \$ 67.50 |
| 1 | 14.9-28 | G-Year Power Torque | 25 | \$ 75.00 |
| 2 | 16.4-34 | BFG-Rich Power Grip | 10 | \$ 25.00 |
| 1 | 18.4-34 | Firestone Tracton F&R | 15 | \$ 37.50 |
| 1 | 13.6-38 | Tracton Torque | 5 | \$ 15.00 |
| 1 | 16.9-38 | Armstrong | 40 | \$ 35.00 |
| 2 | 16.4-38 | G-Year Tracton Torque | 15 | \$ 37.50 |
| 1 | 18.4-38 | Safemark Multi-Angle | 15 | \$ 37.50 |
| 1 | 18.4-38 | Dyna Torque II | 20 | \$ 50.00 |
| 1 | 18.4-38 | Armstrong II | 15 | \$ 37.50 |
| RADIAL | | | | |
| 1 | 14.9R38 | G-Year Dyan Torque Rad | 43 | \$107.50 |
| 1 | 18.4R38 | Armstrong HP Lug Rad | 45 | \$112.50 |
| 1 | 20.8R38 | Armstrong Rad (Take-Off) | 55 | \$545.00 |

OP Lebzelter & Son

Rt. 283 & Rheems Exit (Located Behind Messick Farm Equipment) Elizabethtown, PA

367-6777 - 653-0377 1-800-932-3999 (PA & MD.)

LEBZELTER SERVES YOU ON THE FARM

IN THE FOLLOWING COUNTIES

- ADAMS
- CUMBERLAND
- JUNIATA
- MIFFLIN
- YORK
- BERKS
- DAUPHIN
- LANCASTER
- PERRY
- HARTFORD (MD)
- CHESTER
- HUNTINGDON
- LEBANON
- SNYDER
- CECIL (MD)

