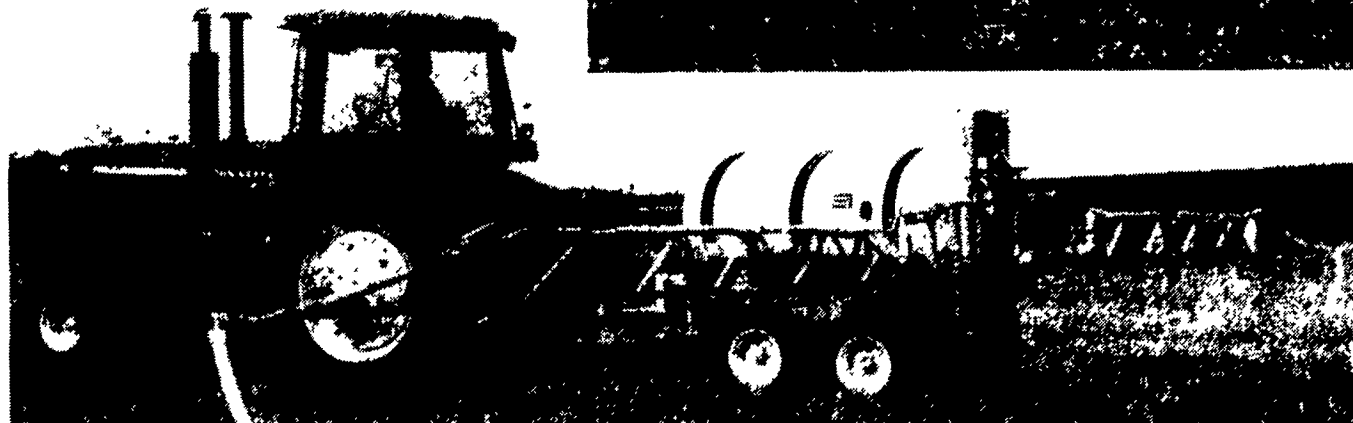
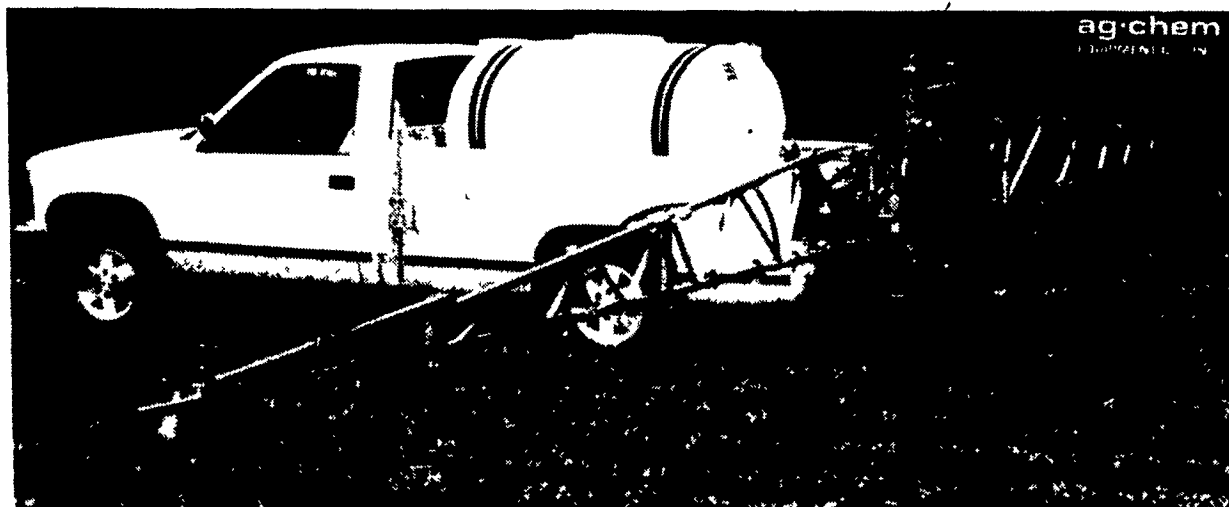




# Introducing Ag-Chem's Short Line Spraying Equipment For 1992

## 400 SKID UNIT

- Built-In Leg Stands
- 47½' Boom
- 3-Section Quick Fold
- Breakaway Boom Arms w/ Auto Return
- Adjustable Boom Height
- Hydraulic Leveling and Boom Fold Available



## 502T PULL-TYPE

- Formed Steel Channel Frame
- Single or Tandem Axle
- Adjustable Axle Spacing From 60" to 80"
- Choice of Booms-47½' or 60'
- Leaf Spring Suspension
- Adjustable Boom Height w/Winch Lift System
- Other Options Available



## 750 PULL-TYPE

- 750 Gallon Tank
- Bottom Fill Reload Kit
- Deep Gathering Sump
- Full Length Steel Cradle
- Flanged Axle Bearings

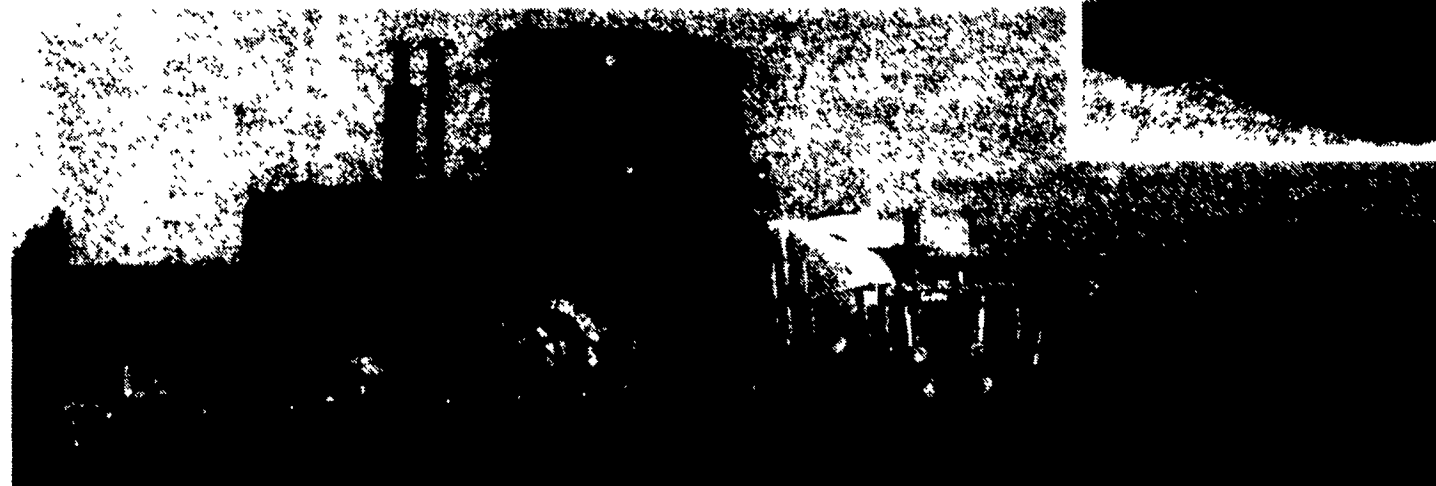
- Adjustable Wheel Spacing From 72" to 120"
- Choice of Booms-47½' or 60'
- Hydraulic Boom Elevation
- Manual 3-Section Quick Fold
- Electric Boom Shut-Off

### Full Line of Parts and Accessories From Leading Companies Like...

- |                    |            |
|--------------------|------------|
| • Spraying Systems | • McKenzie |
| • Hypro            | • G.P.I.   |
| • Ace              | • Shurflo  |
| • Delavan          | • Raven    |
| • Banjo            | • Pacer    |
| • Lifeliner        | • Valvtec  |
| • Solo             | • Scot     |

### SML/LPFM SADDLE TANK

- Low Center of Gravity Design
- Excellent Visibility
- Deep Sumps
- Full Length Steel Saddles on 3x5 Inch Tubes
- Mounting Kits Available For Most Popular Tractors
- YES! - These are the tanks that make Ag-Chem a leader in the field!



## 250 TPH

- Fits Category 2 or 3 Hitch
- 10" Splash Guard Cover
- Deep Withdrawal Sump
- Molded Gallon Markings
- Leg Stands

- Three Boom Options:
- 28' Wire Rope Supported Boom
- 47½' Boom w/Rigid or Suspension Mount
- Manual or Electric Controls

From The Makers Of Terra-Gator!



Serving The Farming Industry For Over 25 Years.

1188 Enterprise Rd.  
East Petersburg, PA 17520

(717) 569-2610