

Kirkwood Hay Auction

Kirkwood, Pa.
 Tuesday, Feb. 4, 1992
 Report Supplied by Auction
 110 LOADS OF HAY.
 MIXED HAY: FIRST CUTTING 89.00-131.00, 2ND CUTTING 98.00-141.00.
 TIMOTHY: 115.00-138.00.
 ALFALFA: 1ST CUTTING 95.00-110.00; 2ND 94.00-147.00; 3RD CUTTING 90.00-160.00; 4TH 79.00-151.00.
 CLOVER: 1ST CUTTING 93.00-105.00.
 CLOVER TIMOTHY: 105.00-122.00.
 ALFALFA TIMOTHY: 110.00-121.00.
 GRASS: 81.00-113.00.
 WHEAT STRAW: 82.00-99.00.
 BARLEY STRAW: 93.00.
 RYE STRAW: 81.00.
 FIREWOOD: 39.00-46.00 PICK-UP TRUCK LOAD.
 SALE TIME 11 A.M.

National Grain Market

St. Joseph, MO
 Feb. 5, 1992
 WHEAT PRICES CONTINUE TO ADVANCE ON HEALTHY EXPORT DEMAND WEDNESDAY, BUT CORN AND BEAN PRICES TURNED LOWER. WHEAT 1 TO 8 CENTS HIGHER, EXCEPT ST. LOUIS 1 TO 4 CENTS LOWER. CORN 1 TO 3 CENTS LOWER. SOYBEANS STEADY TO 3 CENTS LOWER. SOYBEANS STEADY TO 3 CENTS LOWER. RECENT WHEAT PURCHASES FROM VARIOUS COUNTRIES AND PROSPECTIVE TENDERS, INCLUDING INDIA SEEKING ONE MILLION TONNES, FOSTERED CLIMBING WHEAT PRICES FOR FOURTH DAY. SEVERAL FOREIGN CUSTOMERS INDICATING MORE INTEREST FOR WHITE WHEAT THAN SOFT RED WINTER, A FACTOR IN ERRATIC TRENDS. HIGH HOPES CONTINUE ON FORTHCOMING ANNOUNCEMENT FOR EXPORT CREDIT ALLOCATIONS TO CIS. CORN PRICES YIELDED TO PROFIT TAKING ON THE BOARD, FALLING SHARPLY. CORN PRICES WEAKENED FROM LACK OF RECENT EXPORT DEMAND AND POTENTIAL ABSENCE FROM CIS COM-

MODIFY MIX REQUIREMENTS. SOYBEAN PRICES FELL, DESPITE IDEAS CIS TO INCLUDE SOYMEAL IN EXPORT CREDIT NEEDS. LIGHT EXPORT ACTIVITY WEIGHED ON BEAN PRICES.

EXPORT NEWS: JAPAN BOUGHT 42,900 TONNES WHEAT FOR APRIL. SALE OF 110,000 METRIC TONS TO UNKNOWN DESTINATION FOR 91/92 MARKETING YEAR.

DATE CHANGE YEAR AGO 02/05/92 02/04/92 02.06/91 WHEAT: KANSAS CITY 4.63-4.64 UP 1 2.65-2.66 MINNEAPOLIS 4.68 1/2-4.73 1/2 UP 1 1/2-3 1/2 2.79-2.83 PORTLAND 4.77-4.82 UP 7-8 2.96-2.97 ST. LOUIS 4.06-4.12 DN 4-1 2.58-2.63

CORN, U.S. NO. 2 YELLOW: KANSAS CITY 2.64-2.66 DN 2 2.43-2.45 MINNEAPOLIS 2.47 DN 1 1/4 2.26 3/4 SO. IOWA 2.60-2.62 DN 3-1 2.39-2.40 OMAHA 2.40-2.47 DN 3-NC 2.26-2.28 SOYBEANS, NO. 1 YELLOW: KANSAS CITY 5.76-5.78 DN 2-3 5.73-5.77 MINNEAPOLIS 5.53 1/4 DN 3 1/2 5.58 SO. IOWA 5.69 NC 5.72-5.74 C. ILL. PROCESSORS 5.82 1/4-5.85 1/4 UP 1/2-DN 1 1/2 5.81-5.88

*KANSAS CITY, US NO. 1 HARD RED WINTER WHEAT, ORDINARY PROTEIN. MINNEAPOLIS, US NO. 1 DARK NORTHERN SPRING WHEAT, 14% PROTEIN. PORTLAND, NO. 1 SOFT WHITE WHEAT, ST. LOUIS, NO. 2 SOFT RED WINTER WHEAT.

FUTURES CLOSE: KANSAS CITY (MAR) WHEAT 4.50 UP 3/4 2.58 1/2 MINEAPOLIS (MAR) WHEAT 4.39 1/2 UP 3 1/2 2.58 CHICAGO (MAR) WHEAT 4.46 1/2 DN 2 3/4 2.51 1/4 (MAR) CORN 2.67 DN 1 1/4 2.41 3/4 (MAR) SOYBEANS 5.76 1/4 DN 1 1/2 5.73

EXPORT: BARGE OR RAIL, PORT OF NEW ORLEANS OR NORTH TEXAS GULF. NO. 1 HARD RED WINTER WHEAT ORDINARY PROTEIN 4.96 UP 1 3.03-3.05 NO. 2 SOFT RED WINTER WHEAT 4.83-4.86 DN 2 2.85-2.88 NO. 2 YELLOW CORN 2.90-2.91 DN 2-1 2.68-2.69 NO. 2 YELLOW SORGHUM RAIL 5.

29 NC BARGE 5.27 DN 2 4.82-4.73 NO. 2 YELLOW SOYBEANS 6.06-6.07 DN 1 6.07.

Aberdeen Sales Co. Inc.

Livestock Auction Market
 Harford County, Md.
 Hay - Straw - Grain Sale
 Saturday, February 1, 1992
 ALFALFA HAY 2.13 bale.
 GRASS HAY: 1.80 BALE.
 GRASS MIXED HAY: 2.15 BALE.
 TIMOTHY HAY: 2.35 BALE.
 ROUND BALES: 26.00 BALE.
 STRAW: 62.00.
 NEXT SALE FEB. 11, 11 A.M.

Leesport Livestock

Leesport, PA
 Feb. 5, 1992
 CATTLE 226...(PDA)... Supply included 14 feeder cattle and 89 sl. steers and heifers ...Compared with last weeks market: Slaughter steers uneven mostly steady to 2.00 higher. Sl. cows .50 to 1.00 higher. Choice 1100/1500 lbs. sl. steers

70.00-75.00, couple 76.00-76.50, Select 68.00-70.25, Couple Prime Holsteins at 65.00; few Choice 63.50-64.50, few Select 58.00-62.00, few Choice sl. heifers 67.00-75.75, few Select 66.00-73.25. Breaking Utility and Commercial sl. cows 47.00-51.00, Cutter and Boning Utility 47.50-51.25, couple to 52.75-56.25. Canner & low Cutter 42.00-47.00, Shells down to 38.00, few Select & Choice sl. bullock 63.00-65.25. Few Yield Grade No. 1, 1100/1800 lbs. sl. bulls 56.00-65.75, few No. 2 900/1000 lbs. 50.00-54.00. Feeder Cattle: Few Medium Frame No. 1, 300/425 lbs. steers 96.00-109.00. Few Large Frame No. 1, 600/820 lbs. 64.00-70.00.

CALVES 165...Few Choice 91.00-102.00. Standard and Good 75/95 lbs. 80.00-91.00, few Utility 60/75 lbs. 62.50-70.00. Farm Calves: 15.00 to 20.00 lower. No. 1, Holstein Bulls 85/130 lbs. 115.00-140.00, No. 2, 80/120 lbs. No. 1, Hol. Heifers 90/110 lbs. 135.00-160.00. Beef Cross 80.140 lbs. Bulls & Heifers 97.00-168.00.

HOGS 156...BARROWS & GILTS: .75 to 2.00 higher. US No. 1-2 215/245 lbs. barrows and gilts 39.85-42.25, few 1-3 235/255 lbs. 38.00-38.85, 3-4 310/350 lbs. 32.25-33.75, couple lots 1-3 200 & 210 lbs. 35.25 & 38.10. SOWS: 3.00 higher US No. 1-3 315/585 lbs. sows 28.00-32.00. Couple to 34.00. Few Boars 21.00-27.00.

FEEDER PIGS 222... few Lots US No. 1-3 22/30 lbs. feeder pigs 71.00-100.00, 35/50 lbs. 60.00-68.00, Lot 85 lbs. 54.00, all cwt.

SHEEP 27...Choice 85/145 lbs. wool slaughter lambs 57.00-67.00, Few new crop 30/55 lbs. 87.00-145.00. Slaughter sheep 19.00-26.00. - all cwt.

GOATS 13...Few Large 46.00-92.00, few Medium 27.50-57.50. --- all per head.

SHEARSON LEHMAN BROTHERS
 FORNEY LONGENECKER
 SECOND VICE PRESIDENT / FINANCIAL CONSULTANT COMMODITIES
 29 E. KING STREET SUITE 200 LANCASTER, PA 17602
 717 295 8914 800 342 7033 PA 800 441 1997 US

GOOD FARMS RECEIVING STATION
 • Market Hogs
 • Sows • Boars
 • Cull Pigs
HATFIELD Quality Meats
 NOW RECEIVING:
 Mon. 6:30-11 a.m.
 Sat. 6:30-10 a.m.
 Rt. 897 - 1 mile North of Fivepointville
 (215) 445-5776 • FAX (215) 445-6099

Save Electricity
 Replace Your Bulbs - FLUORESCENT LIGHTS
 PRICES AS LOW AS ~~\$6.99~~ NOW \$5.95
 • Save Energy Replaces up to 75 watt incandesc. bulb
 • Easy Installation
 • Economical Lasts 10 times longer than standard bulb
 • Fewer Lamp Changes
 • Lower Maintenance Cost
 • Durable Polycarbonate Housing
 • 45,000+ Hour Ballast
 • 10,000+ Hour Lamp Life
 • Air Cooled
 • Water Resistant Ballast
 • 120 Volt
 • Ratcheted Brass Socket
 • Medium Base
 • Starting Temperature 0°
 • Made in USA
 Call Toll Free 1-800-673-2580
 SOLD AND SERVICED BY:
NORTHEAST AGRI SYSTEMS, INC.
 FLYWAY BUSINESS PARK
 139 A West Airport Rd.
 Lititz, PA 17543
 (717) 569-2702
 Dealer Inquiries Invited

HORSE SALE
 FEB. 21, 1992
 10:00 A.M.

NEW HOLLAND SALES STABLES INC. THE ACTION AUCTION

Group Bred Helpers From Upstate Penna.

Cedar View Farm Selling 4 Springers

Local Bradford Co. Cows All Sell Wed. Feb. 12 Dairy Sale

LIVESTOCK IS OUR ONLY BUSINESS

MONDAY

SLAUGHTER HOGS



EARLY BIRD HOG SALE
 8:00 A.M.

Sell Your Hogs At New Holland Sales Stables, Inc. See them weighed, sold and pickup your check.

10:00 AM

HORSES
 MULES



1:30 PM

BEEF SALE

SHEEP

GOATS

CALVES



WEDNESDAY

HEIFER SALE
 11:00 AM

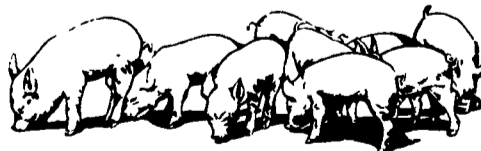
COW SALE 12:00 NOON

HEIFERS DAIRY
 BULLS COWS



We have the usual run of 50 to 100 Heifers, all ages. Loads of fresh cows and springers from our regular shippers. Also some local fresh cows and springers.

1:30 P.M.
 FEEDER PIG SALE



Pigs are accepted after 6:30 A.M. State graded from 8 to 12 Dairy Barn and Feeder Pig Barn are cleaned and disinfected weekly for your protection.

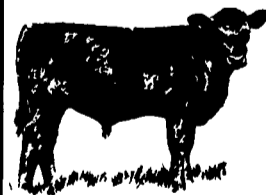
THURSDAY

Beef Auction
 10:00 A.M.

BULLS
 STEERS
 BEEF COWS



1:00 P.M.
 STOCKERS
 &
 FEEDERS



12:00 NOON

SHEEP

GOATS

CALVES



NEW HOLLAND SALES STABLES, INC.

12 Miles East of Lancaster Off Route 23, New Holland, Penna.

MANAGERS

Norman & David Kolb - 717-397-5538

Field Representatives

Luke Eberly - 215-267-6608 738-1865

Homer Eberly - 215-267-3047

Ron Ranck - 717-656-9849

Sale Barn Office Manager
 Roger Floyd - 717-354-4341
 FAX # 717-355-0706

Order Buyer
 Paul Good - 215-445-8662