

MAILBOX MARKET FOR SALE

IH 1586 tractor, good cond., cab, new T.A., new radials, IH 1466 tractor, good cond., engine overhauled. Butler Co. 412-285-4934.

3 yr. old saddlebred 15.3 hands safe, sound. Isaac Fisher, 63 Queen Rd., Gordonville, Pa. 17529. Lanc. Co. 717-768-8897 between 6:30-7 p.m.

Foley saw sharpening, setting outfit complete, new Farmall F12 W12 radiator, \$195, rebuilt Magneto \$150 rebuilt carburetor, \$95, new fenders. Ben J. Kinsinger, RR 1 Box 234A, Meyersdale, Pa. 15552.

16" stock/horse trailer, excel. cond., rear entry-high clearance \$300. Berks Co. 215-944-9368 after 3 p.m.

Holland mulch pot planter model 1265 tank gauge wheels 1 yr. old \$2,100, JD 3 pt. 3-14" plow \$275. Bucks Co. 215-257-9286.

JD 410 backhoe 3 buckets \$8000, 77 F150 Ford 4x4, \$1600, IHC 1860 flatbed dump \$2100, 2" O.D. pipe, \$250. 717-225-1403.

Oliver 1555 diesel excel. cond., clean \$7000, welder generator 650 amps. 12 KW, on wheels \$1500. Lanc. Co. 215-445-6551.

Parts for 1951 D-4 7U small motor good. Armstrong Co. 412-763-9526 before 8:30 a.m. or after 9:30 p.m.

1986 14'x71' 3 bdrm mobile home w/house type roof & siding, stove & refrig included, \$16,000 firm. Snyder Co. 717-374-7334 after 6 p.m.

#7 McCormick cutter w/ shredder bars, also hand crank corn sheller. Amos G. Beiler, Box 216, RD 1 Atglen, Pa. 19310.

16" gutter grates 5/8 in. square bars 112', \$300, good cond., 100' round bars \$75, Case 7 tooth chisel plow Cumber. Co. 717-776-6552

3 nursette automatic calf feeders 717-776-5746.

7 1/2 HP single phase 2 stage compressor new motor \$600. Chester Co. 215-942-9784.

Metal shaper 20" stroke, surface grinder, magnetic chuck, elect. furnace 1 ph., \$2200, 15" rotary table, milling vise. Union Co. Paul Weaver. 717-966-2434.

9" rotary hay tedder \$850, JD orchard tractor fender \$25 both in ex. cond 301-334-4030 or 334-4191.

Waterloo boy 2 1/2 HP gas engine on economy truck, older restoration \$650. Berks Co. 215-488-7302.

School desks self standing \$10 ea., nice. Wanted 4" irrigation pipe w/sprinklers & T-340 H Int. for parts. Lanc. Co. 717-354-4430.

1978 Ford 150 4x4 106M, 2 tool boxes, ladder rack runs good, \$1100. York Co. 717-244-5030.

Loadstar 1850 Int. truck dump steel bed power steering air brakes auto./tran. good hoist low mileage 40 GVW will trade tractor, \$6500. Cecil Co. 410-398-5423.

Shenadoah 30,000 BTU brooder stoves 16 at \$50 ea. Wanted JD front end wts. Lanc. Co. 717-733-3350.

9-10' sections gravity conveyors, 1 pallet lift hand truck, 1-4x8 alum. dock ramp, best offer. 410-557-7393.

81 VW Rabbit PU truck, gas, 54,000 miles in good shape \$2750. Schuyl. Co. 717-386-2833.

1981 Chevy Blazer 4x4 stick \$1195. Body needs work, no rust, engine good, power steering pump noisy. call 215-375-0714.

8 ft. Internal disc transport. Century weed sprayer 14-9-26 tractor tires 1/3 tread. 717-927-6132 York Co.

Snow plow Western 76" power angle lights lift frame for full size Jeep, used 6 times, books 1/2 price. Litz, PA 717-626-4266.

35 horse collars to be sold at Elmer Lantz sale. Also at home. Christ Fisher, 1975A Mine Rd., Paradise, Pa 17562.

NH spreader web for 675, 676, 677 \$475 firm. Fulton Co. 717-294-3407.

Aluminum extension ladders 34' and 22' both good cond. also some wood ladders. Lanc. Co. 215-267-7049.

Oliver #82 semi mounted mower w/crimper PTO \$300; Grove self unloading wagon \$900; NH 66 & 268 PTO balers w/wagon chutes \$500 + \$1400. Carroll Co. 410-848-0711.

Datsun diesel motor with stick trans. or consider buying body motor, will fit. Harford Co. 410-838-9040.

Chow Chows, AKC breeders, cream male, cinnamon female, good temperament, shots wormed, delivery possible \$500/pair. 703-337-7277.

Used bath room tubs and commodes, wash bowls, kitchen cabinets and sinks, faucets and plumbing fixtures, etc. Lanc. Co. 717-354-3130.

Auto-chain feeders, auto-waterers, chick feeders, electric & LP gas hot water heaters, chicken nests, chicken wire, debeaker. York Co. 717-637-8906.

1950 IHC L120 1960 F800 Ford. J H Moss, Washington Co. 301-416-2830 6-9 PM

1964 Ford lowboy dump truck 11,000 GVW, runs good, inspected \$3000 Berks Co. 215-929-3930.

Feed bin, John Deere tedder and 2 bottom plow, boom for front end loader, hume grain dryer. Berks Co. 215-488-1402.

Pygmy goat kids, doe \$150, buck \$50, buff Cochin banties, Aracanas. Franklin Co. 717-597-5816.

'76 Ford dump truck 18' flatbed, JD "B" "50" & "LA", Farmall H & W4, Foley sharpening equip., complete shop, '67 Chevelle Malibu. Franklin Co. 717-423-6291.

Plate compactor \$975, 4 row cultivator \$850, IH 27 baler w/thrower \$875, 10 ft. plastic layer \$950, 4000 lb. towmotor \$1500, Northumberland Co. 717-286-5306.

69 Chev C40 truck 10 ft. cold storage box, plug in AC night stays cold all day great for roadside sales of fruit \$1200. Franklin Co. 717-369-2819 after 5 pm.

2 1954 Ford pickups, Chev pickup 48, Chev deluxe 1 ton dump, accordion 14 ft. fiberglass runabout boat. Adams Co. 717-528-4969

JD 290-2R corn planter w/ fertilizer attachment, JD 4R cornplanter w/fertilizer attach, JD lime spreader, JD 14 haybaler, IH 4 btm. plow. Frederick Co. 301-371-7958.

400 gal. Zero bulk tank (older) \$200. Cumb. Co. 717-423-6208.

Ontario hoe drill on rubber 13-7 fertilizer works. Northumberland Co. 717-627-2195.

Delta woodworking tools, unisaw, shaper, band saw, also some Craftsman tools. 717-272-9721 or 717-733-7739 for more info.

New Holland 479 haybine \$1400. Leb. Co. 717-838-9043.

1947 Oliver 60 tractor with curtains, pulley and cultivator in running cond. \$1300. Lanc. Co. 215-445-6807.

Reg. holstein bulls sired by Leadman Laban Aerostar Ambrose dams w/records to 33,546 1225F, Weaverline holsteins. Leb. Co. 717-933-4577.

Hesston model 1090 mower conditioner, good cond. bolted knife sections. Mifflin Co. 717-935-5346.

Milk mover, 3 pt. Ferguson cults., Troyer potato splitter, 2 hole corn sheller, NH 271 baler w/thrower. York Co. 717-993-2919.

11' steel dump bed w/hyds. \$700, 14' steel dump bed, no hyds., \$250. Franklin Co. 717-532-6540.

Fairbanks mag for 1 cyl. Wisc. engine type XD187 \$40, other mag available. Perry Co. 717-789-3773.

Wood & coal Atlanta circular stove, good cond., \$125 1 pair sheep skin like new. Lanc. Co. 215-445-8204.

IH grain drill on rubber 16 disk work \$25. Lanc. Co. 215-445-6565.

Plywood feed bins, all sizes, will install. Perry Co. 717-536-3283. Omar Stoltzfus, Box 128 RD #1, Blain, Pa. 17006.

1984 Dodge window van 8 pass. V8 auto, AC, PS, PB AM-FM trailer package good cond., \$4000. Lanc. Co. 717-665-5294.

Real Estate: Somerset Co.: Adjacent game lands, 48 acres previously golf course, 24'x40' building, acre pond, spring, some woods, breathtaking view. 412-884-3270.

AC combine Model E corn & grain head has cab, excel. cond., field ready \$3100. Carbon Co. 215-826-4101.

Landscaper special live white pine trees 5-7', \$10, flowering Forsythia \$12. Lanc. Co. 717-684-6340 can deliver & plant.

1978 GMC camper van 400 transmission new brakes tires exhaust cruise furance air cond., sink stove upper bunk '92 inspec., \$3000. 814-849-2744.

1983 KDX80 dirt bike great beginner bike needs piston & rings very good cond., \$250. Wayne Co. 215-932-2530 after 3 p.m.

WW woods chipper category 1 3 pt. hitch mounted 540 PTO \$1960, new asking \$1600 OBO. Harford Co. Md. 410-692-2809.

Chain saws McCulloch 610-20" & Eager Beaver 14" make offer. Carroll Co. 410-857-4639.

MF 255 diesel tractor 290 hrs., 43-plow mold board 3 pt. model-D harrow type-PSG, 41 mower rear mount, JD planter 2-row. Schuyl. Co. 717-455-2963.

Feed cart \$50, elect. bench drill press, 5 spd., \$75, 10" air bench table saw, 2 HP motor, \$95. 215-593-2148.

1981 Ski-Doo citation SS 2,125 miles excel. cond., 370cc dual-carbs must sell asking \$800. York Co. 717-456-5749.

Old full size wooden desk refinished for \$200, small refurnished desk w/new walnut top \$100. Lanc. Co. 717-354-5237.

JD 70 tractor. Mifflin Co. 717-667-3273.

IH 46 baler w/thrower, \$475 OBO, turbo kit for following IH tractors 70 hyd. 86 hyd. 666, 686. Berks Co. 717-933-4753.

Elect. hot water heater, artificial fireplace w/light, bikes, gas engines, 2 horse cult., farm trailer, used wheels, tires. 717-355-2758 after 4:30 p.m.

2nd cut timothy/orchard grass hay, some 1st cut hay, also. Col. Co. 717-437-2076.

JD skid steer loader model 90 48" bucket w/trailer or without \$3,500 or best offer. Carroll Co. 410-795-2154.

2 single sets pony driving harness \$100 ea., 2 pair pony work harnesses \$200 ea. Chester Co. 215-827-9328.

Swans pair black or mute \$500 or trade for rheas, mini donkey, llama can deliver to New Holland Ct. 203-564-2579.

1988 Chevy Suburban excel. cond., \$350 auto. A.C. red w/interior 75,000 miles \$7,400. Chester Co. 215-869-4421 eves.

Reg. Australian cattle, blue heeler, puppies, working parents on farm, shots, reasonably priced, good pets. Northern Fred. Co. Md. 301-447-6337.

JD 14T baler, 494 4 row corn planter, 203 NI manure spreader, 40' elevator wagons. Burl Co. 609-267-6071.

Commercial popcorn machine 1700 watt, will demonstrate stainless steel 2 compartment commercial sink. 301-329-6636.

JD model A B good rubber cond. or trade for snow plow for JD model M. Mineral Co. 304-289-3764.

Lilliston no-till drill 9680 w/ grass seeder agitator liq. fert. tires filled 1038A \$10,500. Ju. Co. 717-694-3684.

9 steel fence posts t-type 5' lghts. \$2 ea. York Co. 717-755-1364 after 5 p.m.

Wic 7 HP bedding chopper very good cond. Chester Co. 215-384-6108.

Truck bed 22' van roll-up door, end gate lift, side door, 1988 very good cond., alum. body, \$2800. Leb. Co. 717-273-6018.

AKC Collie puppies, sable & white, 1st shots & wormed, ready 2-26-92, deposit will hold til ready. Mifflin Co. 717-543-5999.

822 Belarus tractor 4 wd w/ cab, Hesston 530 round baler, both like new cond. Union Co. 717-966-0003.

Wisc. 4 cyl. engine just overhauled firewood you cut \$30 pick-up load. York Co. John E. Stoltzfoos, RR 1 Box 164, New Park, Pa. 17352.

Texaco banks set #1 to #8 in boxes \$1100 per set. Franklin Co. 717-597-9457.

Jack Russell puppies males \$150, females \$175, pedigrees included, can arrange delivery. Want to buy Ford 250 baler. York Co. 717-697-1779.

Steel wheels 14x56 open center w/blocks like new \$500, 12' silo roof, \$250. Cumb. Co. 717-776-3908.

1975 Suzuki 125 street & trail bike A-1 cond., also heavy duty metal shop table. Franklin Co. 717-762-8917.

JD 1209 haybine \$3500 or will trade for round baler. Hampshire Co. W.Va. 304-496-8143.

1955 Chevy truck 16,000 GVW 8.25x20 tires rebuilt 283 eng. 4 spd. w/2 spd. rear 16" flatbed very nice cond., \$650. Sch. Co. 717-682-3996.

Cordwood buzz saw 26" blade, set up for gas engine of flat belt \$125. Hunt. Co. 814-259-3214.

1981 Artic Cat Panther snowmobile, elect. start, hand warmers 2593 miles garage kept, 2 place sled. Harford Co. Md. 410-557-8722.

1 Duroc & 2 Chester White boars service age from tested herd will deliver. York Co. 717-632-4722.

Case skid loaders 1845-1845B-1845C low hrs., \$5500-\$13,500. Cumber. Co. 717-532-9501.

AKC Golden Retrievers - Male 1 1/2 yrs, \$150. Female 4 yrs. \$175. Both for \$275. Deliver up to 125 miles of NJ. 908-363-1820.

1948 John Deere B overhauled, new paint, tires, 70%, \$1600. Maytag hit-miss motor, runs good \$100. Adams Co. 717-677-6703.

Pail milkers, dumping station, 350 ft. 2" glass milk-line, Jamesway drinking cups, White 5400 6 row corn planter, NH 818 sp forage harvester. Dauphin Co. 717-365-3616.

JD grain drill barn beam hand-hewn 38 ft. long round rafter poles. Chester Co. 215-593-6390.

Brew ewes, registered corriedales, crosses, black sheep. Ewe lambs available, 9 months, reasonable. Oxford, Chester Co. 215-932-9638.

17H 6Yr TB mare \$5000. Dapple grey TB mare, 15.2H 5 yr. \$1500. Both ride well, never raced. Chester Co. 215-932-0455.

NI 323 corn picker ex. shape single tooth subsoiler like new. Berks Co. 215-944-0671.

Riteway stove for sale good for stripping room or shop. We still use it for our house. \$100. 717-656-4842.

1981 Int. Transtar 4300 cabover 400 big cam Cummins very good cond. contract goes with \$7000. Lanc. Co. 717-367-0338.

Dorset buck lamb 2 mo. old; 4 ewes 1 yr. old. 717-263-4592.

JD 4430 quad range 3800 hrs. on steel good condition \$7800. Cumb. Co. 717-776-3274.

Pygmy goats registered & unregistered bucks. Wether. Taking orders for spring kids. Leb. Co. 717-933-4978.

Holstein bull, 4 Surge mini cup pipeline milker units \$60 ea. Franklin Co. 717-597-4494.

Foley sharpening equipment, SF1055, SF1000, plus paid \$2400, sell \$1200. Older Jeep transfer \$125. Buick V6 engine \$125. 717-865-5719.

Clay unloader for parts stainless steel fan \$75. Lanc. Co. 717-529-6706.

62 acres farmland- 44 tillable, balance pasture w/ creek, small plot woods, 2 mi. W Wakefield, Cherry Hill Rd. 717-548-2572.

lills pregnancy tester hogs, steel casing, attached prove \$150. Also chicken battery \$75. 3 pre-nursery feeders \$25 ea. 717-664-2739.

32' camper sleeps 6, 72 Chev El Camino. Stalls for rent. Yearling QH colts, fillies. Hershey - E-town 717-367-2788.

Redal tractors JD LGT, little 60, 620, 20 Series, 30 Series, Farmall 560, all restored. 717-264-0155 after 7PM.

Weaverline 430 hydro s.s. electric feed cart w/TR24 charger, ex. cond w/new floor chain, 763 hrs. Berks Co. 215-683-6431 7:45AM-8PM.

Lift truck battery charger 24V 510 amp-hrs 240/480V 3-phase input \$200. Lanc. Co. 717-656-6966 after 5PM.

3PT hitch Carry-All platform \$50. Bull bin fits on platform \$50. Lanc. Co. 717-653-4598.

From Hog Castle: 12 gas heaters, 4000 btu; 2 20" fans. Laurel Hill Cemetery-4 burial lots. Lanc. Co. 717-426-1539.

1980 Dodge truck AT PS 1/2 ton 41,000 mi. good cond. dual tank 6 cyl. Cumb. Co. 717-243-7574.

Reg. Hol. bull: 1 yr. old, sire Laban-ET, dam EX SWF Valiant w/25,000M, \$750 Mifflin Co. 717-899-6893.

US bedding chopper w/ Honda engine good cond. \$500, 15" wide gutter grates 140' best offer. Lanc. Co. 717-529-6876.

Gardening Encyclopedia 18 volumes hardcover illustrated color excellent condition \$35. Will deliver. Lanc. Co. 215-267-5696 after 5PM or weekends.

Feeder wagon with 18 self locking head gates, NH 318 baler with 57 kicker 20 drinking cups, 2 manger dividers. Hunterdon Co., NJ. 908-537-4283.

1930 F20, orchard sprayer, air pruner outfit, new Int. V8, heads, field sprayer 3PT, Cat RD6, TD6 w/new undercarriage. Adams Co. 717-528-4914.

2 telephone poles 32' long, good shape. Lloyd-H. Martin, 1075 Red Run Rd., New Holland, PA 17557.

Trailer single axle 5 ton capacity 6'x9' bed w/ramps & spare tire \$475. Montg. Co. 215-646-3113.

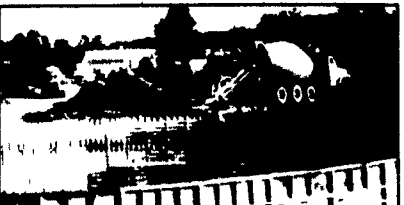
Ener-Go gas additive 8 oz. or gals. Montg. Co. 215-754-7012.

POURED SOLID CONCRETE STORAGE SYSTEMS

17 Years Experience In Pouring Concrete Manure Pits!



Far Left: 1-Million Gallon Circular Manure Storage Tank



Construction Of Partially In-Ground Liquid Manure Tank - 400,000 Gallons



300' Long Manure Pit For Hog Confinement



Above Ground Liquid Manure Tank 425,000 Gallons

CONCRETE PUMPING SERVICE AVAILABLE



Mixer And Boom Trucks



92' Boom Placing Concrete



Placing Concrete On Site

Take the questions out of your new construction. Call Balmer Bros. for quality engineered walls.

All sizes available round or rectangular

Invest in Quality - It will last a lifetime.

Balmer Bros.
CONCRETE WORK, INC.

243 Miller Road
Akron, PA 17501
(717) 733-0353
6:30 AM - 3:30 PM
(717) 859-2074
After 6:00 PM