

**MAILBOX MARKET
FOR SALE**

Potato bulk boxes 14' on 4 wheel wagons, 1 Ziggy, 1 Dalahaman & 1 Bin stacker. York Co. 717-927-6066.

11 cultipacker spools 17" fit 4" axle \$8 ea., 5-2 bolt Ford shares \$4 ea. York Co. 717-235-2032.

Model R 25-45 oil pull restored. Lanc. Co. D.M. Beiler, 2864 Old Phila. Pike, Bird-in-Hand, Pa. 17505.

10 KW gen. set 3 ph. w/ IZUSI diesel good running cond., Samuel Ebersol, 3722 Yost Rd., Gordonville, Pa. 17529.

Tex-Tan hereford brand saddle w/bridle, nice cond., \$325, English jump saddle, suede knee rolls great cond., \$150. York Co. 717-259-7721.

Seasoned walnut firewood, \$75 a cord. Lanc. Co. Stephen L. Beiler, 325 Maple Shade Rd., Christiana, Pa. 17509.

JD 3 sec. harrow, good shape, \$375. Lanc. Co. 717-350-0866.

Post & beam barn for dismantling good roof unpainted boards, best offer. Col. Co. 717-784-9060.

300 used chimney bricks 15¢ apiece & 12-24" chimney flues. Samuel S. Zook, 2407 S. 5th Ave. Lebanon, Pa. 17042.

AKC Yellow Labrador Retriever puppies, excel. hunting background champion lines, have shots & wormed, 7-14 wks. old. Berks Co. 717-933-5239 or 933-5943.

2 cyl. Wisc. engine from NH baler, '72 Chevelle 100% orig., 2- 7.75x15 studded tires, fenders & platform/786 IHC. Leb. Co. 717-273-6683 after 6 p.m.

4'x6' state & U.S. flags, 3'x5' & 12'x18" U.S. state flags, 3'x5' confederate flag, 15" & 60" wind socks, call for prices & order. 717-244-0624.

5 yr. old standardbred 16 hands, 9 mo. old Jersey bull w/papers. Lanc. Co. 717-354-5039.

GE upright freezer good cond., \$65, 8 place settings Noritake China, many extras, \$200. Lanc. Co. 717-560-2399.

JD 730 diesel, 3 pt. N.F., dual remotes, nice clean tractor, direct start, \$3850 neg. Leb. Co. 717-469-0356.

Waterbed, king size w/9 baffles for water control plus heater, excel. cond. Chester Co. 215-869-2449.

2 Goodyear tractor tires 14.9x28 about 1/2 tread. Lanc. Co. 717-665-3669.

Ford 555B, TLB, 4 WD, extend-a-hoe, low/hrs., exc., \$19,900, 1979 Mercedes cab, chassis, good diesel, 26000 gross, \$1,000. Luz. Co. 717-379-2217.

Trailette-stock trailer \$750, 20 ton Eager Beaver tag-along equip. trailer, \$5000, windows: picture window, storm windows, best offer. Ninety Seven (97) Lumber, F. Calvin Beinlich, RR 1, Forksville, Pa. 13616.

Nice pony mule \$250, round bale hay stored in barn \$35 a bale, horse draw 5th wheel wagon, \$3000. Leb. Co. 717-865-3937.

520 JD tractor excel. cond., \$2800, also Farmall cub completely rebuilt w/equip., \$2500. 304-829-4824 after 5:00 p.m.

1st cutting timothy hay, green color, made young, no mold \$100 to \$115 ton delivery avail. Sch. Co. 717-345-4109 eves.

David Bradley attachments: sickle mower \$30, cordwood saw \$75, snow blower \$50, sulky rake \$50, weights \$20. Berks Co. 215-488-7302.

Angus-holstein cross cattle 1 heifer app. 440 lb., 1 steer app. 500 lb. 85¢ per lb. Bethel, Berks Co. 717-933-8501.

350 JD crawler loader good cond., \$8500. Lanc. Co. 215-445-4802.

Surge vacuum pump model SP 11 stain steel milker, Surge belt 2 hold corn sheller. 717-927-6157 after 8 p.m.

Small NH feed grinder (antique). Lanc. Co. 717-665-3996.

Canon PC20 copier, \$500, orig. price, \$1200. 717-733-7739.

160 stainless steel water troughs, 36 has brooders 40 sets mini drinkers, 2000 b.f. mixed sawmill lumber. Queen Annes Co. 410-556-6116.

JD 1209 haybine, middle serial number, working cond., stored under roof, extra set of guards. Lehigh Co. 215-679-8921.

Service age RW Holstein bull. Also 8 yr. old work horse. S.B. Stoltzfus, 74A McIlvaine Rd., Paradise, PA 17562.

Super C tractor w/cult., 7 tooth chisel plow, 40' windmill. Q.A. Co. 410-482-8452.

1991 Chev. S-10 ext. cab 23,000 miles tahoe pkg. snap-on vinyl elect. windows carpeted box, \$11,000. Clinton Co. 717-725-3836.

7' Meyer snow plow w/ lights, mount & lift best offer. York Co. 717-938-2054.

Sheep & lambs, cheap, Farmall H tractor, \$900. York Co. 717-292-5250.

Potato planter, grader, cutter, duster \$500, JD M w/ cult. new tires, \$2000 make offers. Cumb. Co. 609-455-6424 eves.

New 3 AMP 24 volt battery charger, \$25, radiator for 1978 Ford F150 truck \$20. Schuyl. Co. 717-345-8179.

2 holstein heifers due 2/15 vac. & dehorned. Berks Co. 215-562-5105 after 6 p.m.

Dismantle 80' by 40' barn, you keep lumber, make offer. Lehigh Co. 215-395-1236.

IH 449 corn planter for parts, best offer. Berks Co. 717-933-8946.

2-1 yr. old holstein bulls approx. 700# ea. Lanc. Co. 717-442-8160.

7.5KW dsl. generator on trailer \$1500, 15 ton air-brake Miller tilt trailer 18' deck \$3000. Salem Co. 609-691-0526.

Riteway stove model 37 wood or coal. Urie P. Stoltzfus, 1359 Hilltop Rd., Myerstown, PA 17067.

Victory coal stove thermostat control \$495. Also wood stove valley comfort auto heat regulator \$295. Both very good. Sch. Co. 717-345-4686.

74 GMC pickup for parts 350 V8 springs rear cab windshield auto trans etc. \$275 OBO. Lehigh Co. 215-767-9492.

IH 560 dsl., rebuilt engine, transmission, PTO. Sell w/ or w/o belt pulley & loader. Centre Co. 814-364-9926 eves.

#206 NI spreader \$1200 sickle bar 1600 #100 IH spreader \$1000 IH horse drawn corn planter \$200. Mont. Co. 717-721-7074, 721-9522.

Char Lyn hydraulic motors round corn crib Ford 6 cyl. 240 cu. in. engine complete. York Co. 717-927-6967.

Post Hole auger, double flight 9" new \$85. New 24" Bradco backhoe bucket \$100. Sussex NJ 201-875-1597.

1-30 ft. Badger conveyor, double chain, Modl #BN-45 Garrett Co. 301-334-4028.

Market wagon in good cond. Aaron J. Glick, 178 Monterey Rd. Bird-in-Hand, Pa. 17505.

350 bales straw 2.00 ea. 400 bales mulch hay; NH 57 baler \$400. 4x8, 4x6 double pane safety glass. SE York 717-456-7783.

25 ton timothy hay, 20 ton orchard hay, all good quality, no rain \$125. ton. Sch. Co. 717-345-4489.

New, used walk-behind commercial mowers, used firewood processor, 1972 GMC log truck, 1973 Chevy C-60 flat dump. 410-329-6791.

Maytag wringer washer in good running cond. just overhauled, apply to Weaver M. Shirk, 927 Glenwood Dr., Ephrata, Pa. 17522. No phone.

3 registered Jersey show heifers out of Brigadier, brass top, and boomer sooner. Montgomery Co. 215-454-0187.

Open buggy, good cond. Fire wood, potatoes. John Esh, 194 Liberty Lane, Kirkwood, Pa. 17536. Lanc. Co.

2 registered miniature pinto fillies \$800 ea. Serious inquiries only. 717-868-5791.

Finished building home, no longer need 1988 4WR PS Ford 350 dump truck, only 4000 miles \$14,000. Orange Co. NY 914-778-7742.

1971 International truck 6 cyl., one ton \$500. 1978 Horse trailer \$750. 1967 Chevy dump truck \$900. Schuylkill Co. 717-386-5483.

Lancaster Farming, Saturday, February 1, 1992-B19

Cherry turning squares hard maple planks 2 1/2" thick 500 bd. ft. random width. N.Y.S. 607-829-8739.

Farmall 706 gas tractor, dual PTO dual remotes 2PT w/3PT conversion, excellent cond., Farmall H \$650. 304-754-7615.

Winco generator 18KW on trailer w/center pole cord \$950. Leb. Co. No Sunday calls. 215-589-4641.

Mini donkey jennies, grey, \$2250 each; jack foals starting at \$600. All friendly & looking for love. Ocean Co. 609-693-8367.

70A Woodland & Farmland \$2500 per acre. Lebanon Co. 717-273-6332.

Farm trailer 7x9', 2' sides, grain tight. York Co. 717-244-9582.

1976 Ford Van Club Wagon 351 auto runs good or good for parts \$150 OBO. York Co. 717-993-3775.

1976 Gleaner F corn & soybean special combine cab & air & 6 cyl. dsl. 13' grain head exc. cond. \$7000. Northumberland Co. 717-286-0903.

Daisy Red Ryder BB gun, new in box, \$37; 79 Mazda RX7 to restore, 1976 Ford LTD wagon. Lanc. Co. 717-872-5263.

IH 544 hydro gas 2 side 1 rear hyd. outlets 3PTH WFE ex. cond. Glou. Co., NJ. 609-697-2778 after 6PM.

15.5-38 Armstrong tires on Ford wheels, like new. Also Ford 777B loader doe 7710 Ford. Lebanon Co. 717-865-3602.

1979 Ford 26,000 dump \$3825, Super cab w/new 59 Woods \$3000. Wanted- NI 484 round baler. Adams Co. 717-334-6655.

2 Reg. red & white holstein bulls, breeding age, DeLaval #76 milker pump w/motor & 4 pipeline milkers. Mifflin Co. 717-483-6255.

Swing arm cut-off saw \$90. Hunt. Co. 814-259-3214.

3 pt. hitch backhoe, 2 buckets & pump, 1678 Martin manure spreader. Jyniata Co. 717-527-2471.

20 ton hyd. press, NI wheel rake, 90,000 BTU space heater. Wanted: Old flat bulk tank. Leb. Co. 717-866-7342.

Locust posts at least 100 or more, \$5 a piece. 717-865-3974.

2 cyl. Wisc. baler engine, excel., \$360, NH 402 crimper \$800, NH 273 baler w/ engine, Kuhn rakes. S.S. Stoltzfus, 2457 Stumptown Rd., Bird-in-Hand, Pa. 17505.

1977 White TT 290 9 sp. Mack rears new wag. air ride mech. good \$5000 or will sell parts. 215-458-8433.

Overhead doors 9x7 fiberglass brown \$50, 8x6 1/2 wood fert. spreader power take-off, new never used, 2 recapped tires 825-20, \$100 ea. Berks Co. 215-488-1541.

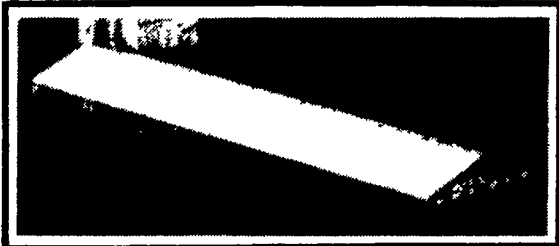
1 Holland 3 pt. planter for tomato or Christmas trees can deliver. 717-933-8530 call after 6 p.m.

Full size tan alum. truck cap \$100 OBO, Snow skis & boots \$100 OBO. Lanc. Co. 717-738-0480 after 6 p.m.

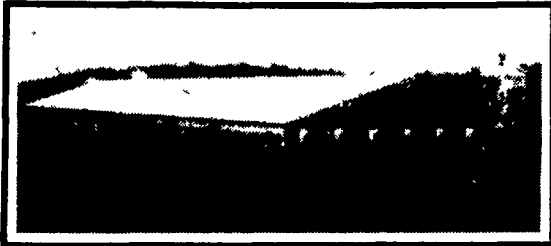
Martin equalizer in good cond. Lanc. Co. 717-626-4974.

Large assortment lumber, building materials, doors, fire extinguishers, pinch bars. Contractor's air tamper. Stainless drum 55 gal. w/carrier. Sheet metal machines. Delco 215-544-2424.

DO YOU NEED MORE FARM INCOME?



HOG FINISHING



FEEDER PIG OPERATION



POULTRY OPERATION

Swine & Poultry Operations Offer An Opportunity For Steady Full Or Part-Time Income, And A Solid Investment Opportunity For Those Capable Of Managing A Modern Operation. Production Contracts And Financing Are Available To Those Who Qualify. CALL FOR DETAILS!

TRI-COUNTY Is In Business To Provide All Your Confinement System Needs Including Total Construction Packages, Renovation Of Existing Facilities, And Reliable On-Farm Service. Our Professional Staff Can Assist You In Planning Financing And In Building A System Custom Tailored To Your Needs!



TRI-COUNTY
CONFINEMENT SYSTEMS INC.
608 E. Evergreen Rd., Lebanon, PA 17042

Ph: 717-274-3488

Hours: Mon-Fri
7:00 to 4:30,
Sat. 8:00 to 12:00

