

# Farm Women Societies

## Lancaster Society 14

Lancaster Farm Women #14 met on the evening of December 19 at the Woods Edge Plaza restaurant for a great time of food and fellowship with members, friends, and spouses. The spirit of Christmas was celebrated with the singing of carols. Members were entertained by the Barber Shop Quartet and many 'oldies,' 'humorous' and 'sing-along' songs.

On January 15 members met at the home of Arlene Eshbenschade for the annual sewing of cancer pads; 63 pads were completed by noon time. Hostesses of the day Hannah Brackbill, Helen Hershey, Rhoda Landis, and Helen Herr had sandwiches and salads prepared.

President, Ellen Newswanger, opened the meeting by calling on Rhoda Landis for a devotional. To depict the ringing in of the New Year, Rhoda rang a little bell as she gave her poetry and scripture.

Members decided on Alexandria, Md. as the destination for the one-day trip in April. The sewing committee reported that nine of our members sewed 158 new items and mended 30 pieces for the General Hospital on Jan. 9.

Ellen Newswanger, Jean Thomas, Rhoda Landis, and Gladys Eshbenschade represented the Society #14 at the State Convention of Farm Women held during the Farm Show in Harrisburg. They all were enthusiastically impressed with the speaker Ken Markley

from the Narramore Foundation of Pa.

Viola Hostetter introduced Mrs. Harriet Sharpless who indeed is a doll lover. She moved 536 dolls with her and her husband into their room at the Willow Valley Manor. Each of the few she brought with her were special. Barbara Bush in her inaugural dress is very beautiful; the Bergman dolls and the Robin Woods dolls are very valuable. She had with her the very favorite doll of her childhood days a Victrola doll that still plays. Harriet gets much pleasure from sharing her family of dolls with others.

The February meeting will be held at the home of Donna Coleman.

## York Society 7

York Starview Farm Women 7 met in January at the home of Viola Druck. Newly elected officers are Irene Rentzi, president; Donna Hoover, secretary; and Edna Brothers, treasurer.

The next meeting will be held on February 12 at 7:00 p.m. at the home of Nancy Emswiler. Each member should bring a Valentine verse.

## Lancaster Society 15

Lancaster Farm Women Society 15 met January 16 at the home of Louise Wenger, Quarryville. Society 8 invited Society 15 to be their guests at a luncheon meeting held at Mt. Joy on April 8.

Jean Ressel reported the Sunshine committee sent 5 cards, flowers, and 3 fruit baskets. Members sang "Happy Birthday" to Trudy Bard, Jessie Trimble, Sally Greenwalt, and Kathryn Horner. Reports from the Pennsylvania Farm Show were given by Kathryn Horner, Judy Greenleaf, and

Arlene Maule. They reported on the memorial service given the late Hazel Lowe, a former Farm Women #15 member.

A quiz on the Farm Women by-laws was given by Sadie Greenleaf. The Farm Women #15 budget for community work and projects designates \$2,780 to be used during 1992. President of Solanca Fair, assistant Donald Trimble was present for consultations and questions concerning the Fair. The February meeting will be held at the home of Arlene Maule.

## York Society 11

York Farm Women Group 11 chose "The 12 Days of Christmas" as their theme for the year. The first meeting was held January 21 at the home of Cora Miller. The theme for the day "A Partridge in a Pear Tree" was used. Program chairpersons, Charlotte Dubbs and Orpha Innerst reported on the facts and habits of the partridge in the U.S. Every member received a pear.

Fourteen members responded to roll call by telling about a law they would like to change.

The "No strike" law for teachers

and the abortion laws were the two laws with the most interest. The by-laws of the society were read.

The next meeting will be held February 18, at the home of Sarah Snyder. The theme for the day will be "Two Turtle Doves." Valentine's Day will be observed during roll call when members respond by telling of a love story they enjoy.

## Berks Society 6

Berks Society of Farm Women, Group #6, had a luncheon meeting in the home of Dorothy Wagner, R.D. #1, Oley on January 21.

The nine members present answered to the roll question: Did you have a nice holiday?

The constitution and the by-laws were read by the president, Pearl Hoffman.

Thank you notes were read from the Hamburg State Center and the Keehn family.

A monetary donation was made to the Oley Valley High School BASH program.

Joyce Mast was welcomed and reinstated as a member of Group 6.

A shopping trip to the M.O.M. outlet is being planned for the February 18 meeting.

After the business meeting, a few games were played.

## CONTACT US

For

- DOUBLE CHAIN PIT ELEVATORS
- HYD. TILT AVAILABLE
- COMPACT ROTO BEATERS
- WISCONSIN & ALLIS CHALMER POWER UNITS
- HAND-O-MATIC BULK FEEDERS
- COMBINATION MOWER AND CRIMPER UNITS
- 455 AND 456 MOWERS
- NEW IDEA CRUSHERS
- LARGE SHOP LATHE
- 40 TON PUNCH PRESS
- CRIMPING ROLLS TO FIT YOUR NEW IDEA CRUSHER

**SMUCKER**  
WELDING & MANUFACTURING  
2110 Rockvale Road, Lanc., PA 17602

## Need Your Farm Buildings Painted?

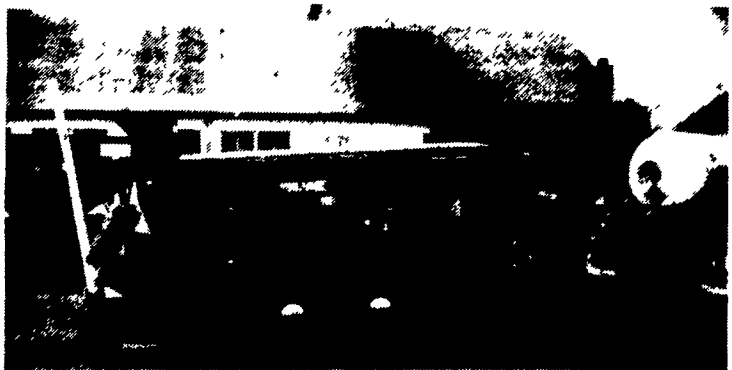
Let us give you a price!  
Write: Daniel's Painting

637-A Georgetown Rd.  
Ronks, PA 17572  
(or leave message)

(717) 687-8262

*Spray on and  
Brush in Painting*

## SOYBEAN ROASTING ON YOUR FARM



### FULL-FAT ROASTED SOYBEANS For Maximum Feeding Value

- High energy, by-pass protein and palatability
- Toxic enzymes and molds destroyed
- Peak performance with retained oil and lecithin
- Improved Total Digestible Nutrients
- Ultimate rich peanutty flavor and aroma
- Dried as roasted
- Roast own grown beans - Avoid trucking and docking
- Economical and efficient for lower feed costs
- Ready for use or storage

Custom Roasting in PA and Surrounding States

David N. Groff  
RD 3 Lewisburg, PA  
(717) 568-1420

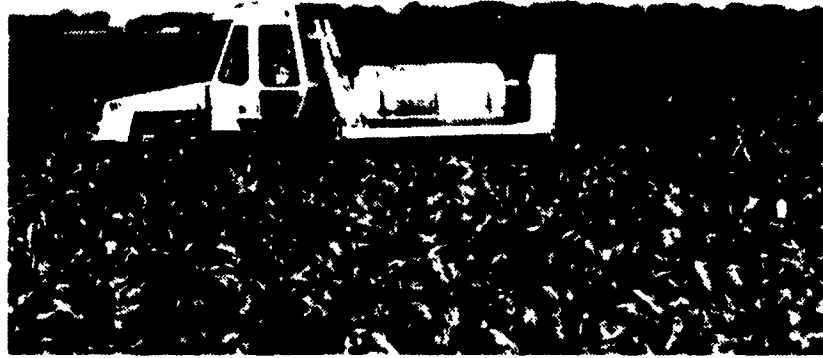
Schnupp's Grain  
Roasting, Inc.  
RD 6 Lebanon, PA  
1-800-452-4004

Horst Grain Roasting  
3040 Penns Grove Rd.  
Lincoln Univ., PA 19352  
(Chester Co.)  
(215) 869-8534

717-865-6611  
Roast-A-Matic  
Grain Roasting  
Sales-Service Custom Work  
Roast - Cool Unit Available

Now...the NEW

**Willmar Air Ride**



### Application Versatility

The AIR RIDE is a versatile applicator which can make accurate applications across rough fields before planting and through finished fields after the crop is up. A rugged four-wheel independent suspension supports the vehicle frame and allows the applicator to make precise custom application.

### Adjustable Axles

The front and rear axles can be hydraulically adjusted from inside the cab, to any width between 72 and 96 inches to adjust for any row width.

### Reduced Compaction

The AIR RIDE is equipped with 43x12.4x24 inch tires, to reduce crop damage and soil compaction.

### 60 Foot Boom

AIR RIDE's 60-foot self-leveling boom and 500-gallon spray tank translates into more acres per day.

Available From

