

Keister's Hay

Middleburg, PA
January 27, 1992

Report supplied by auction
93 LOADS HAY.
ALFALFA: 100.00-160.00.
MIXED HAY: 60.00-190.00.
TIMOTHY: 90.00, 100.00 AND 105.00.
STRAW: 24 LOADS, 65.00-95.00.
EAR CORN: 8 LOADS, 85.00-140.00.
OATS: 7 LOADS, 1.80-2.30 BU.
BARLEY: 1.80 BU.

Dewart Hay

Dewart, PA.

Monday, January 27, 1992

Report Supplied by Auction
40 LOADS HAY, 78.00-171.00.
STRAW: 7 LOADS, 51.00-85.00.
WOOD: 14 LOADS, 21.00-41.00
LOAD.
CORN: 8 LOADS, 75.00-89.00.
OATS: 3 LOADS, 1.80-1.93 BU.

Greencastle Livestock

Greencastle, Pa.

Monday, Jan. 27, 1992

SLAUGHTER CATTLE RECEIPTS: 510 HEAD.
SLAUGHTER STEERS: 121 HEAD. TREND 1.00-1.50 HIGHER. HIGH CHOICE AND PRIME 2-4 72.00-75.50; CHOICE 2-3 950-1075 LBS. 66.00-71.50; CHOICE 2-3 1075-1375 LBS. 66.00-72.25; CHOICE 2-3 OVER 1375 LBS. 62.75-68.75; CHOICE 4 ALL WEIGHTS 62.00-66.75; SELECT & CHOICE 1-2 950-1100 LBS. 61.00-66.75; SELECT & CHOICE 1-2 1100-1375 LBS. 62.00-67.00; SELECT & CHOICE 1-2 OVER 1375 LBS. 60.00-64.50.
HOLSTEINS: CHOICE 2-3 1050-1450 LBS. 60.00-65.75; SELECT 1-2 1050-1450 LBS. 55.00-59.50.
SLAUGHTER HEIFERS: 61 HD. TREND: 1.00-1.50 HIGHER. CHOICE 2-3 850-1000 LBS. 60.00-65.75; CHOICE 2-3 1000-1250 LBS. 65.75-73.75; CHOICE 4 ALL WEIGHTS 60.00-67.00; SELECT & CHOICE 1-2 850-1000 LBS. 61.00-66.00; SELECT & CHOICE 1-2 1000-1250 LBS. 64.00-68.75.
HOLSTEINS: CHOICE 2-3 1000-1350

LBS. 57.00-62.75; SELECT & CHOICE 1-2 1000-1350 LBS. 52.00-56.50.

SLAUGHTER BULLS: 26 HD. TREND: STEADY TO 2.00 HIGHER. YIELD GRADE 1 ALL WEIGHTS 60.00-69.00; YIELD GRADE 2 ALL WEIGHTS 55.00-60.00.

BULLOCKS: 11 HEAD. CHOICE 950-1150 LBS. 59.00-64.75; CHOICE 1-3 1150-1375 LBS. 60.00-65.00; SELECT 1-2 950-1250 LBS. 64.00-69.00.

COWS: 291 HD. TREND: STEADY TO WEAKER. BREAKING UTILITY & COMMERCIAL 45.50-52.00; CUTTER & BONING UTILITY 47.00-51.00, FEW TO 53.00; CANNER & LOW CUTTER 47.00 & DOWN.

STOCKER & FEEDER CATTLE RECEIPTS: 74 HD. TREND: HIGHER-GOOD DEMAND. BEEF TYPES: 200-400 LBS. STEERS 80.00-103.00, BULLS 70.00-94.00, HEIFERS 70.00-84.00; 400-600 LBS. STEERS 70.00-89.00, BULLS 60.00-71.00, HEIFERS 68.00-78.00; 600-800 LBS. STEERS 70.00-77.50, BULLS 60.00-64.00, HEIFERS 60.00-70.00.

HOLSTEINS & DAIRY CROSS: 200-400 LBS. STEERS 75.00-90.00, BULLS 70.00-85.00; 400-600 LBS. STEERS 64.00-74.00, BULLS 60.00-64.00; 600-800 LB. STEERS 55.00-62.00, BULLS 52.00-58.00; 800-975 LB. STEERS 52.00-56.75, BULLS 52.00-56.75.

CALLVES: 517 HD. TREND: STEADY. CHOICE 150-300 LBS. 84.00-106.00; GOOD 150-300 LBS. 70.00-79.00; GOOD 100-150 LBS. 88.00-93.00; GOOD 80-100 LBS. 85.00-90.00; STANDARD 80-100 LBS. 78.00-84.00; STANDARD 80 LBS. AND DOWN 77.00 AND DOWN.

CALVES RETURNING TO THE FARM: TREND: STEADY. HOLSTEIN BULLS OVER 100 LBS. UP TO 165.00; UNDER 100 LBS. UP TO 155.00; HOLSTEIN HEIFERS OVER 100 LBS. UP TO 175.00; UNDER 100 LBS. UP TO 150.00; BEEF TYPE BULLS OVER 90 LBS. UP TO 162.50; BEEF TYPE HEIFERS OVER 90 LBS. UP TO 140.00.

SHEEP & LAMBS: 80 HD. LAMBS: TREND: STRONGER. CHOICE 80-100 LBS. 54.00-62.00; 100-120 LBS. 52.00-60.00; MEDIUM & GOOD ALL WEIGHTS 47.00-56.00; MEDIUM AND GOOD, ALL WEGIGHTS 54.00-64.00; LIGHT LAMBS 69.00-90.00.

SHEEP: EWES LEAN 21.00-29.00; EWES FAT 20.00-26.50; YEARLINGS 30.00-40.00; BUCKS 18.00-29.00.

GOATS: 90 HD: SMALL 18.00-39.00; MEDIUM 35.00-60.00; LARGE 60.00-105.00.

HOGS, SOWS & BOARS: 169 HD. TREND: 1.00 HIGHER. 210-250 LBS. 37.00-39.25; 250-260 LBS. 35.00-36.75; 260-270 LBS. 34.00-36.75; 270-300 LBS. 33.00-37.50.

LIGHT HOGS: 140-180 LBS. 30.00-33.00; 180-210 LBS. 30.00-35.00.

SOWS: TREND: STEADY. GOOD SOWS UNDER 400 LBS. 27.00-33.00; GOOD SOWS OVER 400 LBS. 28.00-32.00; CULL SOWS ALL WEIGHTS 25.00 & DOWN.

BOARS: TREND: STEADY. 180-210 LBS. 24.00-30.00; 210-260 LBS. 24.00-32.00; 260-300 LBS. 24.00-27.00; 300 LBS. & OVER 22.00-23.00.

SALE EVERY MONDAY AT 2:00 P.M. & EVERY THURSDAY AT 1:00 P.M.

HAY & STRAW SALE EVERY MONDAY & THURSDAY AT 11:30 A.M.

SPECIAL FEEDER PIG SALE: SATURDAY, FEB. 22, 1992 AT 1:00 P.M. SPECIAL FEEDER CATTLE SALE FRIDAY, FEB. 7 AT 7:15 P.M.

STEADY PRICES. UTILITY 47.00-50.00; HIGH DRESSING 50.00-51.75; CANNERS 43.00-47.00; SHELLY 42.00 DOWN.

BULLS: YG#1 2410 LBS. 60.00; YG#2 1200-2200 LBS. 56.00-60.50.

FED STEERS: HIGH CHOICE TO PRIME 1200-1350 LBS. 71.00-74.25; AVG. CHOICE 65.00-70.00; SELECT 61.00-65.00; FEW LOW CHOICE HOLSTEINS 1300 LBS. TO 62.75; STANDARD 52.00-57.00.

FED HEIFERS: CHOICE 850-1150 LBS. 65.00-67.75; FEW SELECT TO 61.50; HOLSTEINS TO 58.00.

VEAL CALVES: LOW CHOICE 200-350 LBS. 90.00-95.00; GOOD 75.00-90.00; CULLS 85-110 LBS. 77.00-88.00; 50-80 LBS. 70.00-80.00; WEAK/ROUGH 60.00 DOWN.

FARM CALVES: HOLSTEIN BULLS 5.00-8.00 HIGHER! #1 90-125 LBS. 135.00-160.00; #2 110.00-135.00; FEW 80-85 LBS. 90.00-120.00; HOLSTEIN HEIFERS FEW 90 LBS. TO 120.00; FEW BEEF X HEIFERS TO 127.00.

BUTCHER HOGS: 40 HEAD, 1.00 HIGHER. US#1&2 245 LBS. AT 38.75; 215-260 LBS. #1&3 37.00-38.00; 10 HEAD 265 LBS. AT 37.00; 280-325 LBS.

30.00-33.50.
STOCK CATTLE: 85 HEAD. STEERS FEW LIGHTWEIGHTS; 400-600 LBS. 72.00-82.00; 600-750 LBS. TO 77.00; 750-900 LBS. 63.00-73.00; FEW 900-1000 LBS. TO 66.50.
HEIFERS: 300-500 LBS. 70.00-80.00; 500-700 LBS. 62.00-70.00; 700-900 LBS. 55.00-65.00.
BULLS: 300-500 LBS. 75.00-87.00; 500-600 LBS. 72.00-86.00; 600-800 LBS. 58.00-68.00.
LAMBS: 10 HEAD. FEW 80-100 LBS. TO 56.00; 60-80 LBS. 63.00-79.00; YEARLINGS 30.00-40.00.
SHEEP: 20 HEAD 20.00-30.00.
GOATS: LARGE 60.00-80.00; MEDIUM 35.00-55.00; SMALL 20.00-35.00.
PIGS AND SHOATS: 85 HEAD. BY THE HEAD 9 HEAD 20 LBS. AT 23.00; 35-50 LBS. TO 30.00; 50-80 LBS. 26.00-34.00; BY THE POUND, 90-115 LBS. 30.00-36.00.
STOCK BOARS: 200-250 LBS. TO 31.50; 300-350 LBS. 23.00-28.00.
SOWS: 35 HEAD. 400-500 LBS. 26.00-28.50; 500-700 LBS. 27.00-29.25; THIN 22.00-26.00.
BOARS: 400-700 LBS. TO 22.75.

Westminster Livestock Auction

Hagerstown, Md.

Tuesday, January 28, 1992


Report supplied by auction

SLAUGHTER COWS: 80 HEAD,

HAY, STRAW & GRAIN SALE
Every Thursday at 1 p.m.
Auction will continue all year long
Vintage Sales Stables, Inc.
(Rt. 30, 10 miles east of Lancaster in Paradise, PA)

For info. 717-442-4181 business
215-458-8518 home

L. Robert Frame, Sr. president
Glenn S. Frame Mgr.



HAY, STRAW & GRAIN SALES

Notice Of Time Change (Hay Sale)
Starting Jan. 1, 1992 (New Year's Day)
Hay And Straw Sales Will Start At 10 A.M. Every Wed.
GOOD'S AUCTION
111 North Maple Ave.
Leola, PA 17540
717-656-8911
717-656-9554

HORSE SALE
FEB. 7, 1992
10:00 A.M.

NEW HOLLAND SALES STABLES INC. THE ACTION AUCTION

1 LOAD SPRINGING HEIFERS FROM VIRGINIA SELL WED., FEB. 5, 1992 DAIRY SALE

LIVESTOCK IS OUR ONLY BUSINESS

MONDAY

SLAUGHTER HOGS



EARLY BIRD HOG SALE 8:00 A.M.

Sell Your Hogs At New Holland Sales Stables, Inc. See them weighed, sold and pickup your check.

10:00 AM



HORSES

MULES



1:30 PM BEEF SALE



SHEEP

GOATS

CALVES



WEDNESDAY

HEIFER SALE 11:00 AM

COW SALE 12:00 NOON

HEIFERS BULLS



DAIRY COWS

We have the usual run of 50 to 100 Heifers, all ages. Loads of fresh cows and springers from our regular shippers. Also some local fresh cows and springers.

1:30 P.M.

FEEDER PIG SALE



Pigs are accepted after 6:30 A.M. State graded from 8 to 12 Dairy Barn and Feeder Pig Barn are cleaned and disinfected weekly for your protection.

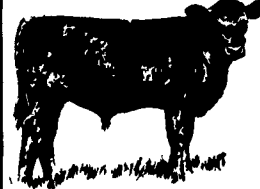
THURSDAY

Beef Auction 10:00 A.M.

BULLS STEERS BEEF COWS



1:00 P.M. STOCKERS & FEEDERS



12:00 NOON

SHEEP GOATS CALVES



NEW HOLLAND SALES STABLES, INC. 12 Miles East of Lancaster Off Route 23, New Holland, Penna.

MANAGERS

Norman & David Kolb - 717-397-5538

Field Representatives

Luke Eberly - 215-267-6608 738-1865
Homer Eberly - 215-267-3047
Ron Ranck - 717-656-9849

Sale Barn Office Manager
Roger Floyd - 717-354-4341
FAX # 717-355-0706

Order Buyer
Paul Good - 215-445-6662