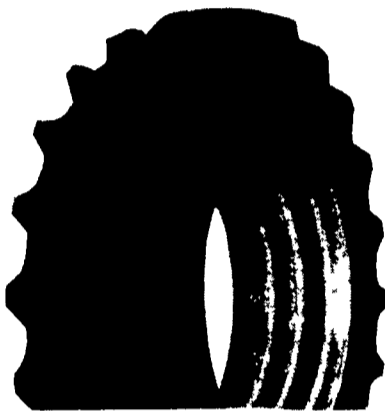


Buy AMERICAN! Buy GOODYEAR! Buy NOW!

PUT OUR RADIALS TO THE TEST FOR 90 DAYS

Super Traction Radial

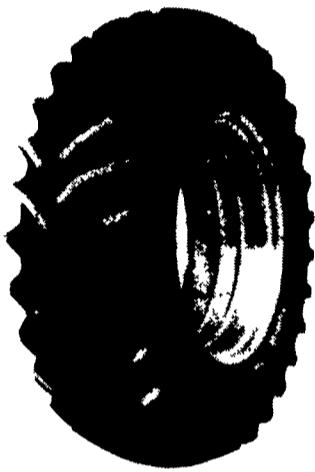


**SUPER TRACTION RADIAL
NO RISK OFFER**

Buy a pair of Super Traction radials now. If, after 90 days from day of mounting, you are not completely satisfied with the performance of these tires, we will remove them and replace them with new Goodyear Dyna Torque bias ply tires of like size and ply rating and will credit you for the difference.

SIZE		PRICE
16.9R26	2"	\$ 555.00
18.4R26	2"	\$ 640.00
23.1R26	3"	\$1280.00
28LR26	1"	\$1315.00
16.9R28	2"	\$ 550.00
16.9R30	2"	\$ 590.00
18.4R38	00	\$ 735.00
20.8R38	2"	\$ 860.00
20.8R42	2"	\$ 940.00

Dyna Torque Radial



**DYNA TORQUE RADIAL
NO RISK OFFER**

Buy a pair of Dyna Torque radials now. If, after 90 days from day of mounting, you are not completely satisfied with the performance of these tires, we will remove them and replace them with new Goodyear Dyna Torque bias ply tires of like size and ply rating and will credit you for the difference.

- Revolutionary three-lug/pitch design improves traction and ride.
- Computer-designed "natural" shape casing improves tire body life.
- Radial construction provides better traction, lower fuel and overall costs.

MECHANICAL FRONT WHEEL DRIVE

13.6R28	3"	\$ 400.00
14.9R28	3"	\$ 470.00
14.9R28	3"	\$ 488.00
16.9R24	2"	\$ 515.00
14.9R30	3"	\$ 532.00
16.9R28	2"	\$ 550.00
16.9R26	2"	\$ 555.00
16.9R30	2"	\$ 589.00
18.4R28	2"	\$ 640.00
24.5R32	1"	\$1090.00
30.5LR32	1"	\$1280.00

OTHER SIZES AVAILABLE

15.5R38	1"	\$ 450.00
18.4R34	1"	\$ 520.00
14.9R34	3"	\$ 525.00
18.4R38	1"	\$ 535.00
16.9R38	1"	\$ 570.00
18.4R42	2"	\$ 675.00
20.8R38	1"	\$ 715.00
14.9R46	3"	\$ 730.00
20.8R34	1"	\$ 855.00
20.8R42	2"	\$ 940.00
18.4R46	3"	\$1070.00

FOUR RIB



SAVE

- Uniform pressure distribution for on-road mobility important for higher horsepower tractors.
- Positive steering
- Bruise-resistant nylon cord

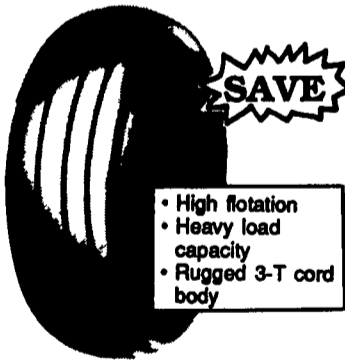
TRIPLE RIB



SAVE

- Wide shoulder ribs and rugged rim shield.
- Durable 3-T nylon cord body and 3-rib design assure stamina and steering ability.

UTILITY TIRE



SAVE

- High flotation
- Heavy load capacity
- Rugged 3-T cord body

7.5L15	6	\$ 52.00
9.5L15	6	\$ 64.00
7.50-16	6	\$ 59.00
9.5L15	8	\$ 74.00
11L15	8	\$ 83.00
10.00-16	6	\$ 85.00
10.00-16	8	\$ 88.00
11.00-16	8	\$106.00

4.00-15	4	\$29.00
5.00-15	4	\$34.00
4.00-19	4	\$35.00
5.50-15	6	\$41.00
6.00-16	6	\$44.00
6.50-16	6	\$47.00
7.50-16	6	\$60.00
7.50-18	6	\$70.00

4.00-9	4	\$22.00
4.00-12	4	\$25.00
5.00-15	4	\$38.00
7.60-15	6	\$38.00
9.5L-15	6	\$43.00
9.5L-15	8	\$46.00
11L-15	8	\$45.00
12.5L-15	8	\$61.00

REAR FARM



Size	Ply	Quantity	Price
12.4-24	8	8	\$175.00
14.9-24	4	2	\$183.00
16.9R-24	1"	1	\$200.00
16.9-24	6	2	\$220.00
16.9-26	6	1	\$180.00
30.5L-32	12	1	\$795.00
11.2-38	4	1	\$167.00
13.6-38	6	2	\$218.00
18.4-38	6	2	\$370.00
18.4R-42	2"	1	\$250.00

LOADER-BACKHOE

Size	Qty.	Ply	Price
11L-15	6	8	\$ 81.00
11L-16	2	10 Ply	\$ 92.00
14.9-24	4	8 Ply	\$215.00
16.9-24	1	8 Ply	\$283.00



FRONT FARM

Size	Rib	Qty.	Ply	Price
7.5L-15	3 Rib	4	6	\$ 45.00
5.50-16	3 Rib	17	4	\$ 32.00
6.50-16	3 Rib	2	6	\$ 41.00
10.00-16	3 Rib	9	10	\$106.00

BIAS PLY REAR FARM DYNA TORQUE II



- Excellent traction with long-bar, short-bar lugs.
- Designed for improved stability and roadability, plus reduced vibration.
- High-strength polyester cord body and heavy-duty rim shield help protect tire from damage.

8.3-24	4	\$ 95.00	16.9-34	6	\$360.00
9.5-24	4	\$130.00	18.4-34	6	\$395.00
11.2-24	4	\$140.00	12.4-38	6	\$230.00
12.4-24	4	\$180.00	13.6-38	6	\$270.00
13.6-24	4	\$235.00	15.5-38	6	\$310.00
11.2-28	4	\$170.00	16.9-38	6	\$400.00
12.4-28	4	\$190.00	18.4-38	6	\$425.00
13.6-28	6	\$230.00	20.8-38	8	\$645.00
16.9-30	6	\$310.00			

USED FARM TIRES

Prices Are Cash And Carry
Mounting Is Additional

Qty.	Size	Make	32's	Price Ea.
2	13.6-24	G-Year Power Torque	5	\$ 25.00
2	16.9-30	G-Year Power Torque	27	\$135.00
2	14.9-28	G-Year Power Torque	25	\$125.00
2	18.4-34	BFG-Rich Power Grip	10	\$ 80.00
1	18.4-34	G-Year Dynatorque II	40	\$200.00
1	18.4-34	Firestone Traction F&R	15	\$ 75.00
1	13.6-38	Traction Torque	5	\$25.00
1	16.9-38	Armstrong	40	\$ 70.00
2	18.4-38	G-Year Traction Torque	15	\$ 75.00
1	18.4-38	Salemak Multi-Angle	15	\$ 75.00
1	18.4-38	Dyna Torque II	20	\$100.00
1	18.4-38	Armstrong Hi-P Lug	15	\$ 75.00
1	18.4-38	Dyna Torque II	40	\$200.00
1	20.8-38	Armstrong Sup Hi-Lug	15	\$ 75.00
		RADIAL		
1	14.9R28	G-Year Dyna Torque Rad	43	\$215.00
1	18.4R38	Armstrong HP Lug Rad	45	\$225.00
1	20.8R38	Armstrong Rad (Take-Off)	55	\$645.00
		PASSENGER		
4	P205/65R15	Michelin XW4 Blackwall (new take-offs, 50 miles)	New	\$50.00
4	P205/60VR	Bridgestone Blackwall	6	\$30.00

OP Lebzelter & Son

Rt. 283 & Rheems Exit (Located Behind Messick Farm Equipment)
Elizabethtown, PA

367-6777 - 653-0377 1-800-932-3999 (PA & MD.)

LEBZELTER SERVES YOU ON THE FARM

IN THE FOLLOWING COUNTIES

- ADAMS
- BERKS
- CHESTER
- CUMBERLAND
- DAUPHIN
- HUNTINGDON
- JUNIATA
- LANCASTER
- LEBANON
- MIFFLIN
- PERRY
- SNYDER
- YORK
- HARFORD (MD)
- CECIL (MD)

