

FOR SALE: JD 350 crawler w/loader, good condition \$5800. Lancaster Co. 717/354-6829

FOR SALE one Lockwood 2-row wind rower. 1850 Oliver w/4-row cultivator. 1755 Oliver w/4 row cultivator. Lockwood 426 4-row potato planter. Lockwood 2 row 4500 potato harvester. 302/734-9922 8-4:30 or 302/734-7645 after 6pm.

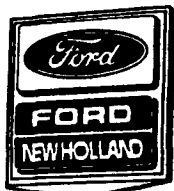
FOR SALE: Rebuilt cylinder heads for almost any farm tractor, truck loader or dozer engine, gas or diesel. New or old available. Please have casting number off your head when calling. ATKINS TRACTOR SALVAGE, Rt.4, Box 26, Union, W.VA 24983, 304/772-3741.

FOR SALE: Westfield 6"x50" auger, \$1,000. Woods 10' offset rotary mower, \$2,400. Gooseneck trailer frame \$600. New Idea 2 row mower, \$500. International 470 disc 18", \$850 OBO. York County. (717)235-4427.

Ford 3400 diesel backhoe, PS, new battery, clutch and alternator, good tires, \$6000 OBO. 215-562-5128.



Ford 6600
Farmall Cub w/Attachments
Ford Versatile V-276 By-Directional w/Loader
NH 479 Haybine
NH 55 Rake
NH 256 Rake
NH 668 LH Tank Spreader
Gehl 99 Blower
MF 52 Disc
MF 12 Baler w/Thrower
Wood Solid Dry Cutter
NI 290 Mower Conditioner



SCHREFFLER EQUIPMENT
Pittman, PA
717-648-1120
717-648-1911

NO-GO fuel line & locking system. Stops theft, prevents unauthorized use of valuable equipment. Easy to install \$29.95 each, tax and shipping included. Security Pro, Box 5024, Lancaster PA 17601. (717)569-4175.

Old Farm and Construction Toys, Trucks, Literature, Signs, Pedal Tractors, Advertising Memorabilia, etc. for sale. \$5.00 for 50 page list. Shown by appointment. I Buy-Sell-Trade. Lloyd J. Wenger, 831A Hilltop Rd., Myerstown, PA 17067. 717/866-7147 evenings.

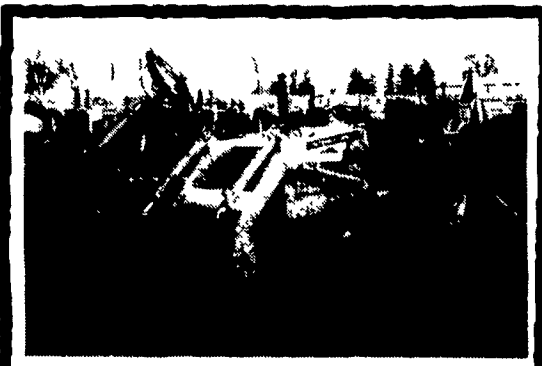
Oliver 550, good condition, 3 pt. lift, good tires; 1967 Dodge D500 dump truck; fair condition. 717-469-0126.

Oliver semi-mounted 4 bottom plow w/16" bottoms. 814/662-2048.

One 7' pull-type Bush Hog mower. 3x16 3pt. plow. 8' IH grain drill. 215/696-6123.

PARTS PRICED RIGHT CRAWLER TRACTOR PARTS CURRENTLY DISMANTLING
AC, Cat, IHC, JD, Case, Michigan, Hough, Galion and others. Loaders, dozers, graders, excavators, backhoes. Many parts removed & checked, ship anywhere.

NATIONWIDE PARTS LOCATER SERVICE NEW ARRIVALS FOR DISMANTLING
JD 450C, AC 645, AC 12G, Case 1150B, Drott 50B And more--inventory changes weekly.
BALANDA EQUIPMENT
PO Box 407
Route 29
Palm, PA 18070
1-800-322-8030



1977 IH 260A Diesel, Tractor With Loader, 3 Point, P.T.O., Dual Remotes, Hydrostatic, Good Tires, Good Bucket, Good Paint.

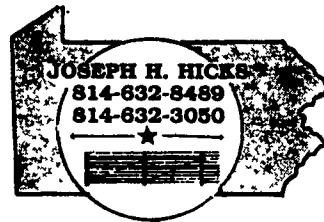
Asking \$8,500

Wengers Farm Machinery, Inc.
717-866-2130- Nights 717-866-7147

FENCE FACTS

You Are Being Cheated If:
Your Contractor Doesn't Have A 4 Ft. Long Rock Auger

Central High Tensile



Fence Construction



USED EQUIPMENT TRACTORS

- JD 1010 utility
- JD 4240 w/4 posts
- JD 650, 4 WD, w/loader, 200 hrs.
- JD 2510 w/loader
- JD 2020 dsl. w/turf tires
- IH 706 gas
- IH Cub Loboy w/sickle mower
- IH 504 w/loader (sharp)
- IH 240 utility
- IH 340 w/loader
- Ford 550 loader/backhoe
- MF 40 ind. w/loader

MISC EQUIPMENT

- JD 7000 6R reg. planter
- JD 148 loader to fit 2940
- JD 158 loader to fit 4230
- IH 60, 13' shredder (sharp)
- JD 346 baler w/thrower
- JD 1250, 3-bot. plow
- JD 1010, 3 pt. field cultivator 17'
- JD 1000 pull-type cultivator 17'
- NH 683 tank spreader
- Little Giant gravity box (nice)

Check Our Feb. Parts Sale

Pikeville Equip. Inc.
R.D. #2, Oley, PA
Phone (215) 987-6277



Case W4 w/bucket & forks



CAT 931B 4 in 1 \$11,000

- Cat 951B crawler loader \$8,500
- Cat 931B 4-in-1, \$11,000
- IH 175C rebuilt motor, 4 in 1 pedal steer \$11,500
- JD 1010 crawler ldr. diesel, \$4,000
- '81 JD 555 crawler loader, excellent rebuilt bucket \$14,500
- JD 450, good u/c, 4 in 1, rebuilt motor & steering clutch \$8,000
- JD 450 C crawler loader w/like new bottom \$13,000
- JD 350 gas crawler loader \$4,000
- JD 310A backhoe, full cab, rebuilt motor w/warranty, excellent \$10,000



IH 175C Rebuilt Motor, 4 in 1, Pedal Steer \$11,500



JD 450, good u/c, 4 in 1, rebuilt motor & steering clutch \$8,000

- Case 1845 skid loader, good condition, \$7,000
- Case 580B extend-a-hoe, nice original machine \$8,700
- Case W4 w/bucket & forks \$7,500
- JD 93 Backhoe attach \$2,500

J & F Equipment
(717) 859-3283
No Reasonable Offer Refused
Customs Repairs On All Makes
Industrial & Farm Equipment

FREE YOURSELF FROM SPREADER CHAINS AND SAVE MONEY



The proven Hydra-Spread design can free you from the grief and maintenance of spreader apron chains for good!

This low maintenance spreader features solid poly boards both on the sides and the floor for slippery, no-stick performance. Hydraulic push power replaces the extensive mechanism needed in ordinary spreaders.

Why pay more for yesterday's ideas and designs? The design of tomorrow is PRICED RIGHT and will be on the job for years. We deliver to your farm.

For more information, call:

Leola, PA
M.M. Weaver & Sons
717/656-2321

N.J. and Delmarva
Jones Dairy Service
(609) 267-0198

Frederick, MD
Doody's Mechanical Service
301/662-4580

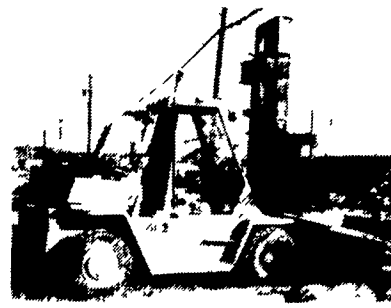
Martinsburg, PA
Bill Cowan
814/793-4293

Corry, PA
Ray Wiggers
814/664-2661

Sandy Lake, PA
Sandy Lake Implement
412/376-2489

Dealer Rep: Scott Douglas 518/529-7326

FORKLIFTS



8,000 lbs. Hyster, 1984, gas, see thru mast w/ side shift, 2700 hrs., excel. cond. \$13,500



20,000 Lbs. Tow Motor, Detroit Diesel \$8,900



3,000 Lb. Electric Stand Up, 3 Stage, S/S, 1984 With Under 1,000 Hours, Like New Cond., With Charger\$4,800



Metal Shear, Angle Iron 8"x8"x1/2" or Plate 16"x1/2" Good Working Cond. \$5,000 Will Load Also, Lay Out Table 8'x20' 1/2" Plate Top Real Nice \$900 Sheet Metal Brake 8'x12 Gauge Like New \$2,250 Sheet Metal Brake 23" Bench Top \$400

13,000 Lb. Cat 1980 Diesel, Full Cab, Very Good Cond. \$15,000



3 Wheel Rubber Tire Loader.....\$2,900
Crane 8 Ton Prentice On Mack Truck, Very Good Condition.....\$8,500

FORKLIFTS

- 18,000 Lb. Cap, CAT 1980, Diesel Auto, Very Good Cond. \$15,000
- 30,000 Lb. Taylor Dual Pneumatic, Detroit Diesel, Auto, Very Good Condition \$19,500
- Forklift Attachment For Tractor Tow-Behind 6' Forks \$900
- Sweeper, Propane Runs Good..... \$800
- 4,000 Lb. A/C Solid Tire, Auto, LPG, Good Condition..... \$1,500
- 4,000 Lb. Cat Pneumatic, Side Shift, Smokes, Needs Little Work..... \$1,800
- 12,000 Lb. Tow Motor, Dual Pneumatic, Detroit Diesel, Side Shift, Runs Good \$4,500
- Forks 25,000 Lb. Cap. \$750/Pair
- 3,000 Lb. Electric Walk Behind..... \$2,500
- 3,000-6,000 Lb. Cap, Electric Sit Down Rider Trucks.....CALL
- 5,000 Lb. Cat, 1981 Pneumatic LPG, Excel. Cond. \$6,800
- 5,000 Lb. Hyster Pneumatic, Gas, Good Condition..... \$3,900
- 4,000 Lb. AC, Pneumatic, Gas New Tires..... \$2,500

HYMAN EQUIPMENT
2604 Smith Ave.
BALTIMORE, MD. 21209-2502
(301) 486-6691
Call Alan Hyman Anytime
30 Forklifts In Yard
At This Time
Mechanic Specials \$500 to \$1500