

**35 TRUCKS & TRAILERS**

Fisher 8' snow plow, \$575.; Call early mornings or evenings till 7 p.m. 717-949-3074 or 703-879-9926

FOR SALE: 1946 Chevy pickup truck, restored original, runs good. 814-628-3453.

For Sale: 8x16' deck over trailer; bumper hitch 10,000 GVW \$1150. No Sunday calls 215/589-2787. Lebanon Co.

Fruehauf aluminum dump 26' tub trailer, Huges low-boy 20,000 GVW. 814-623-9434.

Gooseneck trailer, 20' flatbed w/loading ramp, excellent condition. (717)539-8721.

**KEENS**

SERVICES INC.

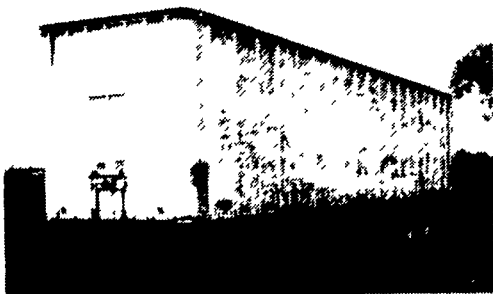
**Trailers**

- Sales
- Service
- Rentals
- Leasing

Lititz, PA  
(717) 626-5420

"Since 1963"

**FOR SALE...**



- 40' Storage Trailer.....\$1,250
- 35' Storage Trailer w/Shelving.....\$650
- 35' Storage Trailer, Insulated.....\$500
- 1978 40' Flatbed, Slider, Headboard.....\$1,950

CALL US TODAY!

**1986 CHEVY 1-TON DUALY**



454, 4 Sp., PS, PB, AC, New Paint, Ex. Cond. **\$7,200**

**1984 CHEVY SUBURBAN**



Scottsdale, 350, PS, PB, Air, 61,000 Miles **\$5,800**

**1978 DODGE CREW CAB**



400, Auto, PS, PB, AC, 66,000 Miles **\$3,800**

"THE TRUCK PEOPLE"  
Over 30 Pre-Owned Trucks In Stock!

**BOYER MOTOR CO.**

1065 S. State Street  
Ephrata, PA 17522  
717-738-1885 1-800-786-1835

'82 4wd Ford pick-up truck, 4 spd., cap, \$3200. 717/222-9815. 44', 45', 46' drop frame trailers, \$3,600 to \$4,800. (215)598-7687.

**SPECIAL CLEARANCE**

- New GMC 2 person passenger seat.....\$150
- New Ford bench seats for F350..\$350
- New GMC bench seat fits 1500/3500 series.....\$350
- New GMC style Top Kick bumper.....\$100
- Ford chrome bumper, fits LN with scratch.....\$185
- GMC 1500/3500 series new chrome bumper.....\$100
- Ford LN painted bumper.....\$135
- IH "S" series bumper.....\$135
- New Thieman upright liftgate....\$1,600
- Used 50 gallon wet line tanks.....\$75
- Dump body pump pull cables, min. order 50.....\$2 each
- Remanufactured Sheppard Steering Box #592.....\$775
- Used Commercial C101 pumps...\$150
- Used 812 series PTO with air shift.....\$150
- New primed Parkhurst 10'x94" platform.....\$600
- New Hart 10' dump body and hoist for 1 ton.....\$1,500
- New Morrison tool cap for new style GMC.....\$999
- Used 9' one-way plow with wheels.....\$775
- Used 7 1/2' Western blade with cylinders.....\$135
- Used 7 1/2' Meyer blade with cylinders.....\$135
- Used 10' dump bed without hoist.....\$275
- Used Page air axle, as is.....\$500
- Used Gantry crane with wheels...\$400

MANY OTHER NEW AND USED BODIES IN STOCK

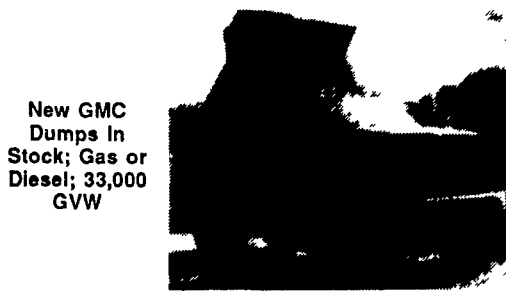
**E.M. KUTZ, INC.**  
Reading, PA  
215-775-3528

**SHIRN'S ISUZU-GMC TRUCK**

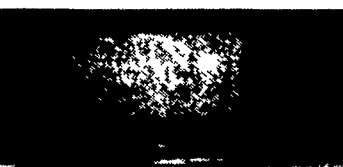
1804 Lycoming Creek Rd., Rt. 15, Williamsport, PA 17701  
Bus.: (717) 326-1581, Ext. 35, 36 & 37  
(800) 343-7456



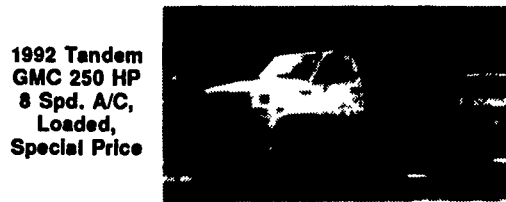
New GMC W-Series Cab & Chassis; From 11,000# GVWR to 32,900



New GMC Dumps In Stock; Gas or Diesel; 33,000 GVW



1992 GMC W7 22' Morgan Van Body; 175 HP Diesel; 6 Spd; PS; 26,000 GVW



1992 Tandem GMC 250 HP 8 Spd. A/C, Loaded, Special Price



**TIRONIE'S TARPS.** SHIPPED ANYWHERE. 1-800-874-2928.

WANTED: Late model 4x4 dually with A/T. Prefer Dodge diesel. (703)234-8062.

1989 Chevrolet K-3500 extend-a-cab, 4 WD truck w/10' bed, 4' roof rack, 38,000 miles, 454 auto, air, loaded. Set up for pulling gooseneck or conventional  
**717-345-4882**

**Professionally Rebuilt Chevy V8 Motors \$650 717/762-7940**

**MOTORS**  
New & Rebuilt 350, 366, 427, 454  
6.2 Diesels  
Rebuilt & Used  
Will Install  
Roll Back Service (at cost)  
717-762-6415

**Replacement Truck Bodies**



Length	Width	Frame Width	Price
7 Ft	66 or 78"	34, 38 or 40"	\$575
8 1/2 Ft.	80 or 90"	34 or 38"	\$595
10 Ft	90"	34 or 38"	\$725
11 Ft	90"	34 or 38"	\$850
12 Ft	90"	34 or 38"	\$960
14 Ft	90"	34 or 38"	\$1050
16 Ft	90"	34 or 38"	\$1200
18 Ft.	90"	34 or 38"	\$1400
20 Ft	90"	34 or 38"	\$1600

**Standard Features Include:**

- Headboard (Square or Tapered), Stake Pockets, Rubrail, Diamond Plate or 2" Wood Floor, Heavy Duty Construction

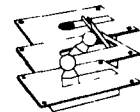
Plastic Wood Slats For Body Racks



Drop Hinge Scissor Hoists



Truck Tool Boxes



Goose Neck Ball Hitches

Trailer Hitches

Write For A Free Catalog

**Ringo Hill Farms Equipment Co.**

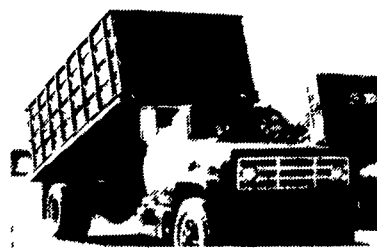
1624 Route 212 Quakertown, PA 18951  
215-346-7340 Fax 215-346-8041



1986 GMC With 26' New 26' Danco Roll Back, V8 Gas, PS, 5-Speed 38,000 Orig. Miles, Air Condition, 28,000 GVW \$17,900



1970 International Cab & Chassis, V8, Gas Engine, 4-Speed, 21,000# GVW, Good Condition \$2,195



1977 GMC, 427 V8 Gas, 5 & 2 Speed, 30,000# GVW, PS, New 16' Knapheide Grain Body & Hoist \$9,800



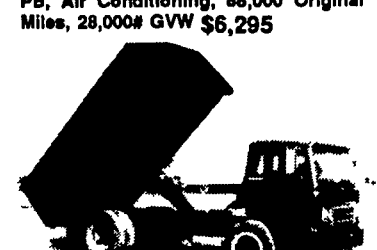
1972 International Dump Truck, V8, Gas, 5-2 Speed, Air Brakes, PS, Good Thiele 9 1/2' Dump Body \$3,850



1985 GMC Cab and Chassis, V8 Gas, PS, PB, Air Conditioning, 88,000 Original Miles, 28,000# GVW \$6,295



1979 IHC S1600, 20,200 GVW, V8, 4 Speed, New 14' Bed and Hoist, 34,000 Original Miles



1974 IHC, Cat Diesel, 5 Speed, 26,000# GVW, 14' Grain Dump, Body With Knapheide 1520 Hoist \$4,995



1975 Ford F600, V8 Gas, 5-2 Speed, PS, 21,000# GVW, New Harsh RL-D40D Hoist, New Knapheide 14' Heavy Hauler, Jr. Platform With Smooth Steel Floor, 40" Sides, \$7,550.



1983 IHC S Series, 6.9 Diesel, 5 & 2 Speed, PS, 25,000# GVW, 20 Ft. Roll Back Body \$9,600



1974 Ford F700 PS, 5-2 Speed, V8, Gas, 26,000# GVW, Air Brakes, Cab and Chassis \$3,295



**Hostetler Truck Bodies & Trailers**

Rt. 322 Milroy, PA 17603  
(717) 667-3921