

AUTHORIZED FACTORY DISTRIBUTOR

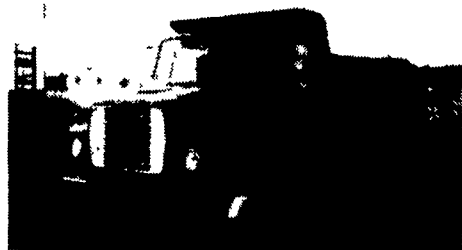
GOODYEAR - HOSE - Air & Hydraulic
NORCO - JACKS - Air & Hydraulic
U.S. JACK-Industrial & Body Shop Tools

PH. 717-354-5649 FAX 717-355-0033
SALES & SERVICE

BEARTOWN HYDRAULICS

Rt. 322 Midway Between
Honey Brook & Blue Ball
Mon.-Fri. 6-6 Sat. 7-12

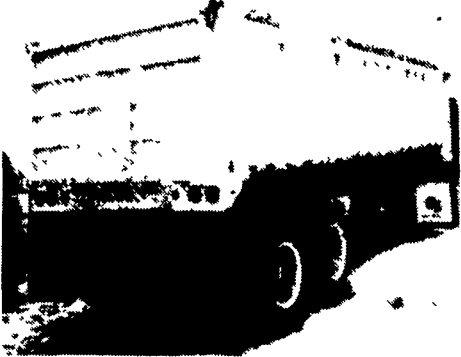
* JACKS * HOSE * CYLINDERS * PUMPS * PALLET TRUCKS



1980 Ford 8000 Dump

210 Cat. Recent Engine Work, New Starter, Batteries, Alternator, Water Pump, New Air Seat, Excellent Rubber, Truck Is In Very Good Condition. Must Sell

\$12,000 OBO
Call and Make Offer
(814) 542-3333 Evenings



1973 FRUEHAUF

28' Tub Dump Trailer \$4,950.

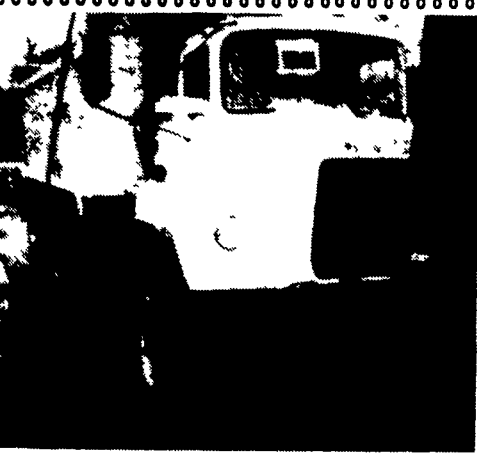
Call 1-800-345-2829
Curry Supply Co., Curryville, PA



1936 FORD

Special Built For The State In 1937, Never Licensed, High Pressure Piston Pump Powered By 37 Ford V8, All Original, Low Miles, \$3,500.

Lanc. Co.
717-529-2126



1978 DM Mack 300 Eng.

With Eng. Brake 6-Speed Trans. 44,000 Rear 18 Front Balloon Tires 14 Ft. Alum. Body - \$8,400.

A & B Garage Inc., Chambersburg, PA
717-263-4139

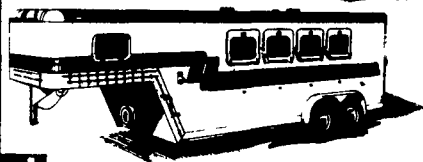


* ONLY 107,000 ORIGINAL MILES *
ORIGINAL OWNER 1988 WHITE GMC
365 Cummins - 9 Speed, Air Ride -
Many Extras, Excellent Condition

\$39,500
(607) 387-6020 Evenings

Make A Smart Investment FEATHERLITE

Several available for immediate delivery



SOLD BY

HOSTETLER TRUCK BODIES & TRAILERS
Rt. 322, Millroy, PA 17063
717-667-3921

YES!! ENGLE FORD DOES MAKE IT EASIER!!

Over 100 New & Used Trucks, Vans & 4x4's

- 1990 F250 4x4, HD, 7.3L Diesel, 5 Speed
- 1990 F250 4x4, XLT, V8, AC, Windows & Locks
- 1989 F250 4x4 Super Cab Diesel, Automatic, A/C Loaded
- 1990 F150 4x4 XLT AC 3.9L V6
- 1987 F350 Dump, 6.9 Diesel 4 Speed
- 1982 F350 Chassis Cab V8, 4 Spd 137 MB
- 1989 F250 AC, 5 Speed
- 1986 F250 XLT, AC, 4 Speed
- 1986 Chevy Beauville Window Van, 5 passenger, 6 cyl, automatic, 16,000 mi

ENGLE FORD, INC.

Rt. 147 North
Millersburg, PA 17061
The Call's On Us 1-800-242-8075
1-717-692-4841



88 - F350 - DUALY

XLT Lariat / 460 EFI / Towing / Tilt / Cruise / Auto / A.B.S. / Air / Cassette / P.D. / P.W. / Radials / Stab Bar / 410 Posi / Air Horns / C.B. w/Console / S.S. Covers / Deluxe Grille / F. Spoiler / Fogs / Red Undercarriage / S.S. Running Boards / 12V In Bed / Class III / Hitch / Custom Paint / Under Bed / Gooseneck Hitch, Etc., Etc.

28,370 Miles

Any Cleaner It Would Be New - Driver Ready

\$15,900
(215) 343-0356

80/81 Mack tractors; Wood chip trailers; 318/350 Detroit motors; Fuller 13spd. transmission; 381nt rear ends; Pete air-ride; 150hp, 350 & 400hp electric motors. Clearfield. (814)672-3196.

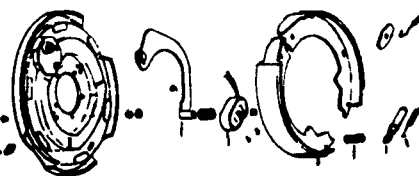
'81 GMC Brigadier truck, 35,000 GVW w/new silver 6V52 engine, \$8900. 717-776-7725.

For Sale: 1991 Chev S-10 Tahoe Pkg 23,000 miles, extended cab, power windows, tilt, cruise, stereo, vinyl snap-on, 2-tone red \$11,000. Clinton Co. 717/725-3836.

6500 gallon aluminum tank trailer, can be used for liquid fertilizer. (717)935-2011.

Ford F600 w/73,000 original miles, dump w/feed blower, A-1 condition, moving out of state, best offer. (717)597-4213.

SEE US FOR YOUR BRAKE PARTS, MAGNETS, SHOES, HYD. ETC.



See us for truck - trailer hook-ups, installation Gooseneck, bumper, etc.

Also see us for complete axle assemblies 2000 - 22,500 Lb. axles & suspensions.

- Metal Trailer components
 - Lights & Electrical Supplies
 - Brakes, tires & wheels
 - Jacks, couplers & hitches
 - Hardwood Accessories & much more.
- Check our prices on receiver hitches.

Buy where the quality is #1 at the right price.

Ask For Dean At:

BINKLEY & HURST BROS. INC.

133 Rothsville Station Rd - Lititz, PA 17543
Phone 626-4705

SNOW PLOW PARTS

Parts for

Fisher - Meyer - Western - Gledhill - Valk
IN STOCK

All Sizes of Cutting Edges - Tire Chains
New Plows and Salt Spreaders
Daily UPS

E.M. KUTZ, INC.
Reading, PA
215-775-3528

FOR SALE BY OUT-GOING SURGE AND PATZ DEALER:

- (1) 1975 12' Chevy Step Van with Grumman aluminum body - manual transmission
- (1) 1978 12' Chevy Step Van with Grumman aluminum body - automatic transmission
- (1) 1989 22' Surge/TEAM Chevy Step Van w/Detroit 8.2 diesel engine - automatic transmission - Union City aluminum body - low mileage - designed and set up for route sales - many other features too numerous to mention.

Patz Inventory - crated - ready for pick-up. Approximatley \$20,000 dealer cost. List will be provided on request.

If interested, please call
(717) 265-2200 between 8 am and 5 pm

YOUR SOURCE FOR THESE QUALITY PRODUCTS

ARIENS • BOLENS • ECHO • PECO
OUTDOOR POWER EQUIPMENT

HILLSBORO • OWENS CLASSIC • KODIAK
FLATBED/UTILITY/AUTO/LIVESTOCK/HORSE
GOOSENECK AND STRAIGHT HITCH TRAILERS

OMAHA STANDARD • WEATHER GUARD
TRUCK AND VAN EQUIPMENT

MILWAUKEE • CENTURY • SANDBORN • WINCO
POWER TOOLS/WELDERS/AIR COMPRESSORS/GENERATORS

• NEW AND USED WHITE/OLIVER
TRACTOR PARTS •

FARMERSVILLE EQUIPMENT

R.D. 4, East Farmersville Rd., Ephrata, PA 17522
Located in the Village of Farmersville
(717) 354-2150