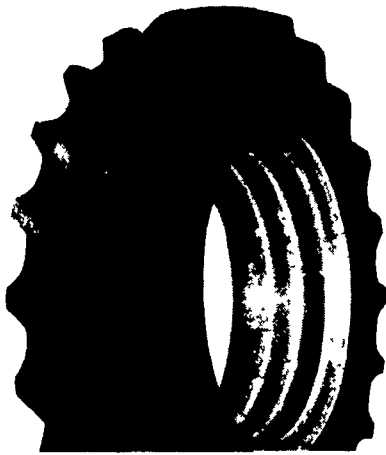


FIT IT WITH GOODYEAR

PUT OUR RADIALS TO THE TEST FOR 90 DAYS

Super Traction Radial



SUPER TRACTION RADIAL NO RISK OFFER

Buy a pair of Super Traction radials now. If, after 90 days from day of mounting, you are not completely satisfied with the performance of these tires, we will remove them and replace them with new Goodyear Dyna Torque bias ply tires of like size and ply rating and will credit you for the difference.

SIZE		PRICE
16.9R26	2"	\$ 555.00
18.4R26	2"	\$ 640.00
23.1R26	3"	\$1280.00
28LR26	1"	\$1315.00
16.9R28	2"	\$ 550.00
16.9R30	2"	\$ 590.00
18.4R38	00	\$ 735.00
20.8R38	2"	\$ 860.00
20.8R42	2"	\$ 940.00

Dyna Torque Radial



DYNA TORQUE RADIAL NO RISK OFFER

Buy a pair of Dyna Torque radials now. If, after 90 days from day of mounting, you are not completely satisfied with the performance of these tires, we will remove them and replace them with new Goodyear Dyna Torque bias ply tires of like size and ply rating and will credit you for the difference.

- Revolutionary three-lug/pitch design improves traction and ride.
- Computer-designed "natural" shape casing improves tire body life.
- Radial construction provides better traction, lower fuel and overall costs.

MECHANICAL FRONT WHEEL DRIVE

13.6R28	3"	\$ 400.00
14.9R28	3"	\$ 470.00
14.9R28	3"	\$ 488.00
16.9R24	2"	\$ 515.00
14.9R30	3"	\$ 532.00
16.9R28	2"	\$ 550.00
16.9R28	2"	\$ 555.00
16.9R30	2"	\$ 589.00
18.4R26	2"	\$ 640.00
24.5R32	1"	\$1090.00
30.5LR321*		\$1280.00

OTHER SIZES AVAILABLE

15.5R38	1"	\$ 450.00
18.4R34	1"	\$ 520.00
14.9R34	3"	\$ 525.00
18.4R38	1"	\$ 535.00
16.9R38	1"	\$ 570.00
18.4R42	2"	\$ 675.00
20.8R38	1"	\$ 715.00
14.9R46	3"	\$ 730.00
20.8R34	1"	\$ 855.00
20.8R42	2"	\$ 940.00
18.4R46	3"	\$1070.00

BIAS PLY REAR FARM DYNA TORQUE II



- Excellent traction with long-bar, short-bar lugs.
- Designed for improved stability and roadability, plus reduced vibration.
- High-strength polyester cord body and heavy-duty rim shield help protect tire from damage.

8.3-24	4	\$ 95.00	16.9-34	6	\$360.00
9.5-24	4	\$130.00	18.4-34	6	\$395.00
11.2-24	4	\$140.00	12.4-38	6	\$230.00
12.4-24	4	\$180.00	13.6-38	6	\$270.00
13.6-24	4	\$235.00	15.5-38	6	\$310.00
11.2-28	4	\$170.00	16.9-38	6	\$400.00
12.4-28	4	\$190.00	18.4-38	6	\$425.00
13.6-28	6	\$230.00	20.8-38	8	\$645.00
16.9-30	6	\$310.00			

REAR FARM

Size	Ply	Price
14.9-24	4	\$188.00
16.9R-24	1"	\$215.00
16.9-24	6	\$227.00
16.9-26	6	\$195.00
30.5L-32	12	\$835.00
11.2-38	4	\$173.00
13.6-38	6	\$225.00
18.4-38	6	\$385.00
18.4R-42	2"	\$275.00

LOADER-BACKHOE

11L-15	8 Ply	\$ 81.00
11L-16	10 Ply	\$ 92.00
14.9-24	8 Ply	\$222.00
16.9-24	8 Ply	\$292.00
18.4-24	12 Ply	\$415.00

FRONT FARM

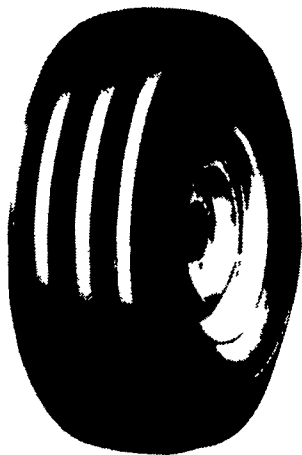
	Ply	
7.5L15	3 Rib 6	\$ 45.00
9.5L15	3 Rib 8	\$ 62.00
5.50-16	3 Rib 4	\$ 32.00
6.50-16	3 Rib 6	\$ 41.00
10.00-16	3 Rib 10	\$106.00
4.00-19	3 Rib 4	\$ 27.00
11L15	4 Rib 8	\$ 74.00
10.00-16	4 Rib 8	\$ 75.00

FARM UTILITY

	Ply	
9.00-10	4	\$ 31.25
9.5L-14	8	\$ 46.00
9.5L15	8	\$ 45.00
6.00-16	4	\$ 30.00
6.00-16	6	\$ 33.00
7.60-16	6	\$ 25.00
12.5L-16	14	\$ 77.00
14L16.1	12	\$142.00
4.00-18	4	\$ 25.00



FOUR RIB



- Uniform pressure distribution for on-road mobility important for higher horsepower tractors.
- Positive steering
- Bruise-resistant nylon cord

7.5L15	6	\$ 52.00
9.5L15	6	\$ 64.00
7.50-16	6	\$ 59.00
9.5L15	8	\$ 74.00
11L15	8	\$ 83.00
10.00-16	6	\$ 85.00
10.00-16	8	\$ 88.00
11.00-16	8	\$106.00



TRIPLE RIB

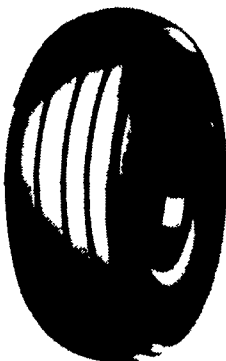


- Wide shoulder ribs and rugged rim shield.
- Durable 3-T nylon cord body and 3-rib design assure stamina and steering ability.

4.00-15	4	\$29.00
5.00-15	4	\$34.00
4.00-19	4	\$35.00
5.50-16	6	\$41.00
6.00-16	6	\$44.00
6.50-16	6	\$47.00
7.50-16	6	\$60.00
7.50-18	6	\$70.00



UTILITY TIRE



- High flotation
- Heavy load capacity
- Rugged 3-T cord body

4.00-9	4	\$22.00
4.00-12	4	\$25.00
5.00-15	4	\$38.00
7.60-15	6	\$38.00
9.5L-15	6	\$43.00
9.5L-15	8	\$46.00
11L-15	8	\$45.00
12.5L-15	8	\$61.00

OP Lebzelter & Son

Rt. 283 & Rheems Exit (Located Behind Messick Farm Equipment)
 Elizabethtown, PA
 367-6777 - 653-0377 1-800-932-3999 (PA & MD.)

LEBZELTER SERVES YOU ON THE FARM IN THE FOLLOWING COUNTIES

- ADAMS
- BERKS
- CHESTER
- CUMBERLAND
- DAUPHIN
- HUNTINGDON
- JUNIATA
- LANCASTER
- LEBANON
- MIFFLIN
- PERRY
- SNYDER
- YORK
- HARFORD (MD)
- CECIL (MD)

