

Central U.S. Carlot

Beef Report

January 22, 1992

Report supplied by USDA

CENTRAL U.S. CARLOT BEEF REPORT (INCLUDES THE MAJOR PRODUCTION AREAS IN THE MIDWEST AND TEXAS) AS OF 3 P.M. COMPARED TO TUESDAY'S 3 P.M. REPORT: COMPARED TO TUESDAY'S 3 P.M. REPORT: UTILITY CARCASSES UNEVEN; CUTTER AND BULL CARCASSES STEADY. DEMAND AND OFFERINGS LIGHT TO MODERATE.

COW & BULL CARCASSES

FOB OMAHA BASIS

18 LOADS REPORTED

UT, BRK 2-4, 450 & UP, 6 LOADS, RANGE 78.00-82.00, LATEST ESTB. MKT. 78.00-80.00.

UT, BNG 1-3, 400 AND UP, 9 LOADS, RANGE 83.00-85.00, LATEST ESTB. MKT. 83.00-85.00.

CUTTER 1-2, 350 & UP, 2 LOADS, RANGE 95.00, LATEST ESTB. MKT. 95.00.

BULLS 500/UP, YG 1, 1 LOAD, RANGE 102.00, LATEST ESTB. MKT. 102.00.

BONELESS PROCESSING BEEF/ BEEF TRIMMINGS

90.5 LOADS REPORTED

FRESH 90% STEADY TO 2.00 HIGHER; 75% STEADY. DEMAND AND OFFERINGS LIGHT TO MODERATE. BEEF TRIMMINGS HIGHER ON LIGHT TO MODERATE DEMAND AND OFFERINGS.

FOB OMAHA BASIS

90%FR, 15 LOADS, RANGE 129.5-132.0, WT. AVG. 130.47.

90%FZ, UNQUOTED.

85% FR, RANGE 122.0, WT. AVG. 122.00 D.

85%FZ, UNQUOTED.

75%FR, 1 LOAD, RANGE 91.00, WT. AVG. 91.00.

75%FZ, UNQUOTED.

65%FR, RANGE 68.5-70.0, WT. AVG. 68.69 A.

65%FZ, UNQUOTED.

50%FR, 56 LOADS, RANGE 36.00-38.00, WT. AVG. 37.40.

50%FZ, UNQUOTED.

50%BX, UNQUOTED.

BULL: 92-94, 0.5 LOADS, RANGE

143.0, WT. AVG. 143.00.

FOB EAST TEXAS AND OKALHOMA

90%FR, 14 LOADS, RANGE 130.00-130.5, WT. AVG. 130.11.

90%FZ, 4 LOADS, RANGE 131.0-131.5, WT. AVG. 131.25.

85%FR, UNQUOTED.

85%FZ, UNQUOTED.

75%FR, UNQUOTED.

75%FZ, UNQUOTED.

65%FR, UNQUOTED.

65%FZ, UNQUOTED.

BULL: 92-94 UNQUOTED.

CAF NORTHEAST AREAS

90%FR-65% FR, UNQUOTED.

ABCDE AFTER QUOTES REPRESENTS DAYS SINCE LAST ACTUAL MARKET TEST. QUOTES ARE DROPPED AFTER 5 DAYS OF NO TEST OR BEFORE IF THEY NO LONGER REFLECT CURRENT MARKET CONDITIONS.

Four States Livestock

Hagerstown, Md.

Wednesday, January 22, 1992

Report supplied by Auction

SLAUGHTER COWS: 90 HEAD.

UTILITY 47.00-51.00; HIGH DRESSING 51.50-53.00; CANNERS 44.00-47.00;

LOW DRESSING 42.00-44.00; SHELLY 42.00-DOWN.

BULLS: YG#2 1300-1900 LBS. 56.00-59.00.

FED STEERS: NO HIGH CHOICE OR PRIME; FEW CHOICE 1050-1400 LBS. 68.00-71.25; LOW CHOICE 1300-1500 LBS. 62.00-66.00; STANDARD 1100-1500 LBS. 57.00-59.00.

FED HEIFERS: FEW HIGH CHOICE 1100 LBS. TO 68.00; LOW CHOICE 900-1100 LBS. 62.00-66.00; SELECT 59.00-62.00; HOLSTEINS CHOICE 1300-1500 LBS. 50.00-57.00.

VEAL CALVES: CHOICE 200-300 LBS. 95.00-107.00; GOOD 85.00-95.00; CULLS 85-110 LBS. 78.00-88.00; 50-80 LBS. 68.00-80.00; WEAK/ROUGH 60.00 DOWN.

FARM CALVES: HOLSTEIN BULLS 10.00 LOWER. #1 90-125 LBS. 135.00-158.00; #2 80-110 LBS. 95.00-130.00; HOLSTEIN HEIFERS #1 95-125 LBS. 130.00-152.00; BEEF X BULLS AND HEIFERS 100.00-145.00.

BUTCHER HOGS: FEW OFFERED.

US#1&3 190-215 LBS. 40.00-42.00; FEW 220-270 LBS. TO 40.00; 300-400 LBS. 40.00-43.00.

STOCK CATTLE: 77 HEAD. STEERS 300-500 LBS. 77.00-89.00; 500-700 LBS. 72.00-82.00; 750-975 LBS. 58.00-67.00.

HEIFERS: 300-500 LBS. 70.00-82.00; 500-700 LBS. 60.00-68.00.

BULLS: 300-500 LBS. 72.00-84.00; 500-700 LBS. 65.00-79.00.

DAIRY REPLACEMENTS: LARGE SPRINGERS 925.00-1075.00; MEDIUM TO 780.00; OPEN HEIFERS BY THE POUND, 500-750 LBS. 60.00-65.00; HOLSTEIN BULLS 960 LBS. AT 58.50; ANGUS BULLS 1035 LBS. AT 61.00.

LAMBS: CHOICE 115 LBS. TO 57.00; 80-95 LBS. TO 69.00; 150 LBS. AT 93.00.

SHEEP: 25.00-31.00.

GOATS: MEDIUM 54.00-62.00.

PIGS AND SHOATS: 165 HEAD. BY THE HEAD, 15-30 LBS. 13.00-20.00; 35-50 LBS. 18.00-25.00; 50-70 LBS. 25.00-30.00.

SOWS: PRICES HIGHER. 300-500 LBS. 27.00-32.00; 500-700 LBS. 28.00-32.50.

BOARS: TO 21.75.

NEWSPRINT BEDDING: BFI WILL DELIVER 30 CUBIC YARDS (APPROX. 8 TONS) OF LOOSE NEWSPRINT TO BE USED FOR BEDDING TO WASH. AND FREDERICK CO. FARMERS FOR A DELIVERY FEE. ONE DAY LEAD TIME. PHONE 223-7272.

NEXT WED., JAN. 29, SELLING 12 HEREFORD ANGUS X STEERS AND HEIFERS 500-600 LBS., HAD ALL THEIR SHOTS.

Aberdeen Sales Company, Inc.

Complete Auction & Appraisal Service

Churchville, Md.

Wednesday, January 22, 1992

SLAUGHTER STEERS: MARKET 1.00 HIGHER. CHOICE 2-4 1100-1400 LBS. 69.50-73.50; SELECT & LOW CHOICE 1000-1500 LBS. 66.00-70.00; HOL. STEERS HI CHOICE & PRIME 1250-1400 LBS. 60.00-64.00; CHOICE 1200-1500 LBS. 58.00-61.00; SELECT ALL WEIGHTS 62.00-66.00.

SLAUGHTER HEIFERS: MARKET 1.00 HIGHER. CHOICE & PRIME 950-1300 LBS. 69.00-72.00; SELECT ALL WEIGHTS 900-1400 LBS. 60.00-66.00.

COWS: MARKET STEADY. BRK. UT. & COMM. 2-4 BULK 46.00-49.00; HI DRESSING 49.50-53.00; CUTTER & BONING UT. 45.00-48.00; HI DRESSING 48.00-51.00; CANNER & CUTTERS 40.00-45.00; LOW DRESSING 40.00-DOWN.

BULLS: MARKET STEADY ALL WEIGHTS 1100-1900 LBS. 58.00-69.00.

VEAL CALVES: CHOICE & PRIME 200-400 LBS. 71.00-98.00; HI GOOD & LOW CHOICE ALL WEIGHTS 65.00-82.00.

FARM CALVES: MARKET STEADY. HOL. BULLS 100-125 LBS. 140.00-152.00; HOL. BULLS 85-95 LBS. 100.00-140.00; HOL. HEIFER CALVES 100-120 LBS. 120.00-160.00; SMALL FRAME 70-105 LBS. 90.00-140.00; SLAUGHTER CALVES ALL WEIGHTS 65.00-80.00.

FEDDER CATTLE: MARKET STEADY. BULLS & STEERS 400-900 LBS. 63.00-75.00; HEIFERS 300-700 LBS. 61.00-69.00.

LAMBS: MARKET STEADY. CHOICE & PRIME 90-110 LBS. 55.00-64.00; LIGHTER LAMBS 65.00-100.00; EWES - HEAVY 19.00-26.00; EWES - LIGHT 24.00-35.00.

GOATS: MARKET STEADY. SMALL 18.00-30.00; MEDIUM 30.00-55.00; LARGE 75.00-100.00.

HOGS: MARKET STEADY. 210-250 LBS. 37.00-39.00; 255-300 LBS. 31.00-35.00; SOWS - HEAVY 22.00-26.00; SOWS - LIGHT 20.00-26.00; BOARS ALL WEIGHTS 19.00-22.00.

HAY, STRAW & GRAIN SALE
Every Thursday at 1 p.m.
Auction will continue all year long
Vintage Sales Stables, Inc.

(Rt. 30, 10 miles east of Lancaster in Paradise, PA)

For info. 717-442-4181 business 215-458-8518 home

L. Robert Frame, Sr. president
Glenn S. Frame Mgr.



Notice Of Time Change (Hay Sale)
Starting Jan. '1, 1992
(New Year's Day)

Hay And Straw Sales Will Start At 10 A.M. Every Wed.

GOOD'S AUCTION
111 North Maple Ave.
Leola, PA 17540
717-656-8911
717-656-9554

HORSE SALE
FEB. 7, 1992
10:00 A.M.

NEW HOLLAND SALES STABLES INC. THE ACTION AUCTION

TOP LOAD BRADFORD COUNTY COWS SELL WED., JAN. 29 DAIRY SALE
(Additional Consignments Page A31 & B46)

LIVESTOCK IS OUR ONLY BUSINESS

MONDAY

SLAUGHTER HOGS



EARLY BIRD HOG SALE
8:00 A.M.

Sell Your Hogs At New Holland Sales Stables, Inc. See them weighed, sold and pickup your check.

10:00 AM



HORSES
MULES



1:30 PM

BEEF SALE



SHEEP
GOATS
CALVES



WEDNESDAY

HEIFER SALE
11:00 AM

COW SALE 12:00 NOON

HEIFERS
BULLS

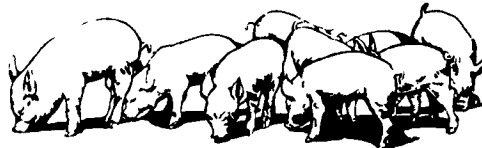


DAIRY
COWS

We have the usual run of 50 to 100 Heifers, all ages. Loads of fresh cows and springers from our regular shippers. Also some local fresh cows and springers.

1:30 P.M.

FEEDER PIG SALE



Pigs are accepted after 6:30 A.M. State graded from 8 to 12 Dairy Barn and Feeder Pig Barn are cleaned and disinfected weekly for your protection.

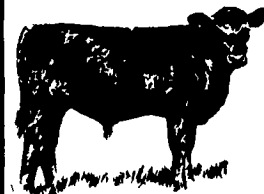
THURSDAY

Beef Auction
10:00 A.M.

BULLS
STEERS
BEEF COWS



1:00 P.M.
STOCKERS
&
FEEDERS



12:00 NOON

SHEEP
GOATS
CALVES



NEW HOLLAND SALES STABLES, INC.

12 Miles East of Lancaster Off Route 23, New Holland, Penna.

MANAGERS

Norman & David Kolb - 717-397-5538

Field Representatives

Luke Eberly - 215-267-6608 738-1865
Homer Eberly - 215-267-3047
Ron Ranck - 717-656-9849

Sale Barn Office Manager
Roger Floyd - 717-354-4341
FAX # 717-355-0706

Order Buyer
Paul Good - 215-445-6662