

Gerald Parry and Penn Jersey Products invite you to join our

# WINTER DAIRY TOUR

Thursday, Jan. 30 • Meeting at 10:00 AM at the intersection of Rts. 160 & 31, Roxbury, PA

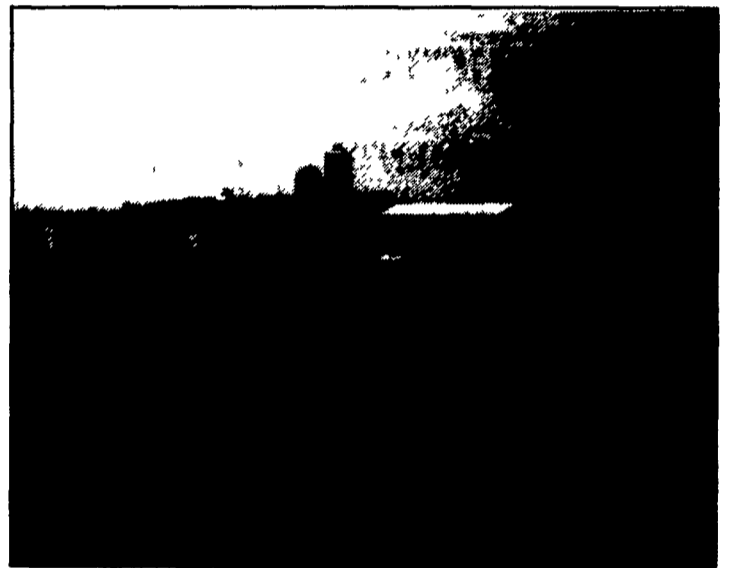
## VISIT THREE OUTSTANDING SOMERSET CO. DAIRY FARMS!



### KIRK & JAY HILLEGASS

HILLMONT

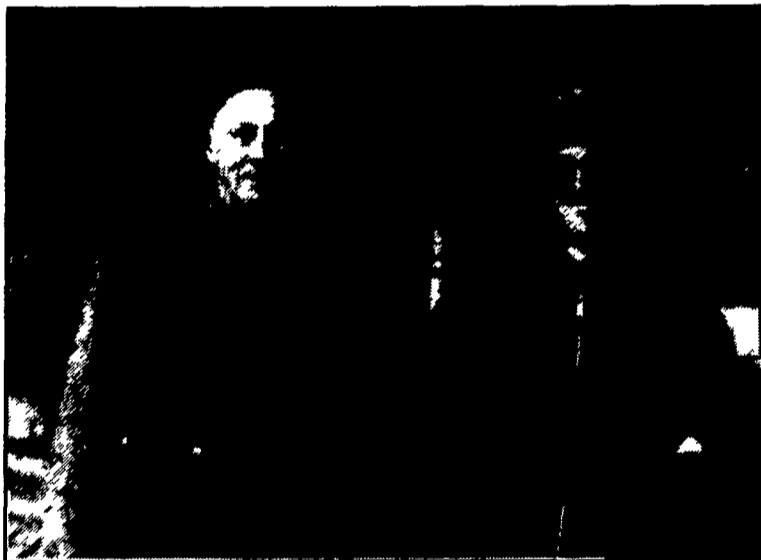
21,823 lbs. milk; 812 lbs. B.F. on 111 cows.  
Total mixed ration of Harvestore® haylage,  
corn silage and Harvestore high moisture  
shelled corn.



### DOUG & DEB HILLEGASS

MOUNTAIN VIEW FARMS

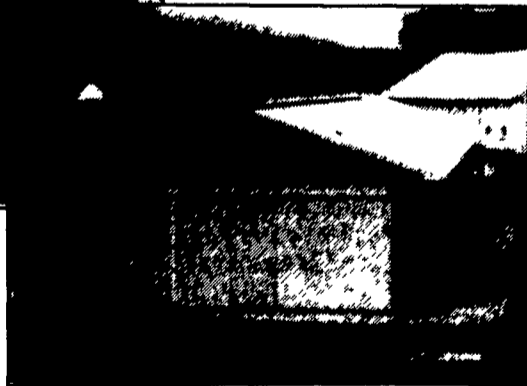
24,010 lbs. milk; 3.6 B.F. on 85 cows.  
Slurrystore® manure handling system in  
operation for three years.



### DEAN & JEFF HILLEGASS & FAMILIES

DIVIDING RIDGE FARMS

21,020 lbs. milk; 3.9 B.F. on 110 cows (90%  
registered). New 158'x40' modified Penn  
State gated freestall building with drive-by  
feeding.



DELAWARE & EASTERN SHORE:  
Service clinic at  
Clayton Bender Farm  
Tues., Jan. 28  
Call for details!

FOR RESERVATIONS CALL GERALD PARRY (814-267-4891) OR THE PENN JERSEY OFFICE



### PENN JERSEY PRODUCTS, INC.

YOUR LOCAL INDEPENDENT AUTHORIZED HARVESTORE® SYSTEMS DEALER

P.O. BOX 7 • NEW HOLLAND, PA • 717-354-4051

NOW ALSO SERVING ALL OF MARYLAND AND DELAWARE

Mill Creek, PA  
717-483-6940  
John Yoder, Mgr.

New Enterprise, PA  
814-766-2364  
Ken Bupp, Mgr.

Fairhope, PA  
814-267-3308  
Joe Simpson, Mgr.

Newville, PA  
717-776-3397  
Maynard McCullough, Mgr.

Columbus, NJ  
609-293-7136  
Charles Van Mater, Mgr.

The results you may achieve with your Harvestore® System depend primarily upon your management skills and may vary from successful results achieved by others. Any application to a particular farming operation requires the advice of qualified experts and is subject to limitations of good management, weather and other conditions present at the individual location. Harvestore is a registered trademark of A.G. Smith Harvestore Products, Inc.