

Ladies Program

(Continued from Page A30)

shows visitors that science can be not only fun, but breathtaking, eye-opening and hair-raising, too. The Carnegie Science Center is an interactive experience, guaranteed to be different from anything you've ever seen or done before. Visitors can race beside a world class sprinter, ride an Olympic bobsled, see how things would

look if the distance between your eyes was changed, and control the water patterns and jets of the three story Aquabatics Fountain. The Science Center is also home to the world's most technologically sophisticated interactive planetarium, the Buhl Planetarium and Observatory, as well as the Rangos Omnimax Theater featuring the most advanced motion picture system in the world.

From the 79 foot Omnimax projection screen to the tornado lurking in a refrigerator to the dazzling aquarium to the demonstration

stages, you will be amazed, entertained and educated.

For the trip to the Carnegie Science Center, buses will load at the Sheraton Inn at 9:00 am. Lunch

will be served at the Science Center. Buses will return to the Sheraton by 3:00 pm; in time to hear HFA CEO Steve Kerr address the Annual Meeting.

Awards Breakfast Speaker

Mike Young, Director of Sales for Genmark, will be the speaker for the Pennsylvania Holstein Association's Awards Breakfast. The Awards Breakfast is set for Saturday, February 29, 1992 beginning at 8:30 am. His topic will be genetic markers, in particular the genetic marker for BLAD (Bovine Leucocyte Adhesion Deficiency.)

Mike has been involved in marketing, promoting and selling dairy genetics over the past 16 years. He has developed international recognition as a marketer of top Holstein cattle genetics, parti-

cularly in Germany and Japan, where he has managed numerous international cattle sales. His Holstein experience spans more than 25 countries worldwide. In 1982, Mike joined Holstein World as head of their advertising department, and spent the next five years managing, promoting and selling advertising space and concepts. Mike served as Executive Secretary of the California Holstein Association, and managed his own Holstein herd.

A native Pennsylvanian, Mike has his B.S. in Dairy Science from Penn State.

Convention Schedule of Events

Feb. 27 — Feb. 29

Sheraton Inn-Warrendale

Thursday, Feb. 27

11 a.m. — 6 p.m.	Registration
1 p.m. — 5 p.m.	Dairy bar, commercial exhibits open
1 p.m. — 2:45 p.m.	Board of directors meet
3 p.m. — 4:30 p.m.	Panel discussion
5 p.m. — 6:30 p.m.	Pre-sale buffet dinner
7 p.m.	Convention sale
9:30 p.m.	Dairy bar open

Friday, Feb. 28

7:30 a.m. — 7 p.m.	Registration
8 a.m. — 6:45 p.m.	Dairy bar
8 a.m. — 6 p.m.	Commercial exhibits open
9:30 a.m. — 3 p.m.	Ladies tour luncheon, Carnegie Science Center
9:30 a.m.	Pennsylvania Holstein 79th Annual Meeting
10 a.m.	Horace Backus presents, "Historical Holstein Highlights"
3 p.m.	Keynote speaker Stephen Kerr, executive secretary of Holstein Association of America
6 p.m.	Reception, social hour
7 p.m.	Convention banquet, dance

Saturday, Feb. 29

8:30 a.m. — 9:30 a.m.	Awards breakfast
9:30 a.m.	Guest speaker Michael Young, of GenMark Inc Awards presentations

NEW HOLLAND SALES STABLES, INC.

New Holland, Pa.

Located 12 Miles East of Lancaster, just off Rt. 23

Late Consignments for DAIRY SALE JAN. 29 (WED.)

- 12 Springing heifers from Chester County.
- 30 AI Sired Cattle from a Northern PA Herd 6 open heifers, 12 bred heifers, balance are cows in all stages of production.
- 12 nice springing heifers from VA. Well grown and good dairy type. Calfhood Vaccinated and have all necessary shots.

See page B46 this issue for more info.

CANCEL CANCEL CANCEL

— SALE —

SAT., FEB. 1, 1992
WILLIAMSPORT, MARYLAND
FIRE HALL

AUCT.: JOHN D. DOWNIN

CANCEL CANCEL CANCEL

In Addition To

Our Regular Sale

at Shady Lane Dairy Sales Inc.

1/4 mile West of Quarryville off Rt. 372 onto Oak Bottom Rd.

Selling

Thurs. Morning, January 30, 1992

We will have 1 top load of Canadian fresh & close cows. Also 6 registered and grade Jersey 1st calf heifers, just recently fresh or springing now, real fancy.

Selling at 2:00.

For more information call:

Glenn D. Fite
717-786-2750

David L. Fite
717-786-1725

For Full Sale Listing see page B46.

PUBLIC AUCTION

of FARM EQUIPMENT for

DESIMONE FARMS

Sat., February 15, 1992
Time: 9:30 A.M.

Jessup Mill Rd., Clarksboro, NJ
Gloucester County

20 ga Fox Sterlingworth
12 ga Remington Automatic Model 58

Tractors: 1986-6610 Ford tractor, 1978-9700 Ford tractor, 1954-AV 130 INT tractor w/cult, 1952 AV 100 INT w/cult.

Trucks: 1991 Scottsdale B model 1500 V8 Chev. P.U. (3900 original miles - like new). 1974 Step van, 1974 Chev service truck (parts), 1970 Ford Step van (parts), 1968 Ford F-700 w/18 foot van body, 1968 Mack Tatum tractor, 1962 Chev 12 ft. flat bed body (steel), 1968 GMC 1 ton dump V6 (runs), 1954 Army truck 6 cyl GMC, 1954 Army truck (parts), 1980 Hobbs 35 ft. flat trailer, 1955 6500 gal. water tank trailer, 1955 3500 gal. water tank trailer.

Irrigation Equipment: 1986 Hobbs Hard Hose 960 ft. Nelson gun (used very little), 1985 Baurer Hard Hose 1000 ft. Nelson gun, 1980 Pringle Hard Hose 1200 ft. w/Nelson gun, 1-Deutz irrigation pump (Hale-401 hr), 1-Deutz irrigation pump (Hale-2260 hr), 1-Detroit 3 cyl Marlow pump, 1-Hale PTO pump, 160 pcs 6" pipe (ring lock), 10 ring lock risers, 25 pcs 4" irrigation pipe, elbows, 45's, etc., 4 irrigation pipe trailers.

Packing House: 1-Boggs grader w/2-way belt, grading table, 1-electric foot staple machine, 1-foot manual stapler, 1-air hand staple gun, 1-hand operated staple gun, rollers, conveyors, 200 bin boxes 48"x42"x36", 500 1/2 plastic bas, Asp bunchers, tables & benches.

Field Equipment: 1-6 bottom 16" Ford plow, 1-J.D. 3 row cult, 1-White 3 row cult, 1-Johnson 3 row cult, 3 row Gandy drill w/tool bar, 1-J.D. 3 row 77 planter w/tool bar & scribes, J.D. 3 row fert. applicator, Holland 3 row transplanter w/scribes, fiberglass drums transplanter (300 gal. cap), fiberglass drums transplanter (400 gal. cap), spray tank w/boom w/300 gal. alum. tank, 3 pth fiberglass spray tank, Vicon spinner 3 pth w/1500 lb cap, 6" Int 3 pth cuttharrow (like new), electric conveyor belt on wheels, 20' scratch harrow on rubber, John Bean tank B.S. motor pressure washer, 3 flat trailers, flat bed wagon 8'x20', 3 pallet wagons (6-box), 1-5 box pallet wagon, 5 skid tank for diesel fuel, 3-275 gal, 1-200 gal, 1-500 gal, 3-hand fuel pumps, 2-elect. fuel pumps, set of dual tires 18.4-38 on rims, set of dual tires 16.9-38 on bolt on rims.

Greenhouse Equipment: 35'x100' - 2" tube steel greenhouse (new), greenhouse 18'x100' - 1 1/2" pipe, 2-rolls greenhouse plastic 6 mil 45x110 (new in box), 1-roll greenhouse plastic 6 mil 24x100 (new in box), 1000 plastic trays 10'x20', 1000 inserts 72 cubes, 1500 inserts 72 cubes (new), 300 hot bed sash & rafters, Cypress lumber for hot bed frames, spotting boards.

Labor House Equipment: Beds, matt, cooking stove, refrigerator, lockers, assortment of crib house tools.

Directions: Coming off Delaware or Commodore Barry Bridge take 295 North to exit 18A. South on 295 take 18B, go through Clarksboro on Cohawkin Rd. Make left soon as crossing NJ Turnpike. Jessup Mill Rd. runs along T.P. Farm on left.

Auctioneers Note: All out of state checks must be accompanied by bank letter of credit. Owner or seller not responsible for loss or injury.

RALPH D. HUGHES - AUCTIONEER
589-6454

FOOD AVAILABLE

Public Auction

Saturday, February 1, 1992

10:30 A.M.

(Inclement Weather Date Feb. 8)

Consignment Sale

Trucks, Tractors, Combines, Farm Lawn & Garden Equipment, Horse Drawn, And Misc.

Location: Walters Farm U.S. 13 Just North Of Canterbury Light 8 Miles South Of Dover, De. On U.S. 13.

Early Listings:

4430 JD Tractor w/Cab; 14' Int. Disc; 530 Case Tractor (Nice), 135 MF Tractor (Excellent), Farmall B Tractor 2, 18 Ft. MF Disc, 18 Ft. Crowsfoot Packer w/Transport Wheels, 3 Row 3 PH Holland Transplanter w/Water Tank, 40 Ft. Flatbed Trailer, 18 Ft. 3 Axle Trailer, 2 Axle 17 Ft. Equipment Trailer, 1982 5th Wheel Horse Trailer w/Living Quarters (Loaded), 7 Ft. NH Haybine, NH 276 Haybaler (Excellent), NI Hayrake, NH 18 Ft. Flatbed Wagon (Nice), JD Model L Manure Spreader, 8 Ft. 3 PH JD Disc, 2 Row 3 PH JD Planter 2-16 Ford 3 PH Plows, 4-16 JD Semi-Mount Plows, Flat Bed Wagon, 6 Ft. Box Scrape Water Winch Hose Drag w/660' Ft. Hose, w/Nelson Gun, And A Looper, Hardware To Build 6 Horse Stalls, 6-16 Ft. Tudegates. (Note: All Of The Above Hay Equipment Is In Excellent Shape Shed Kept).

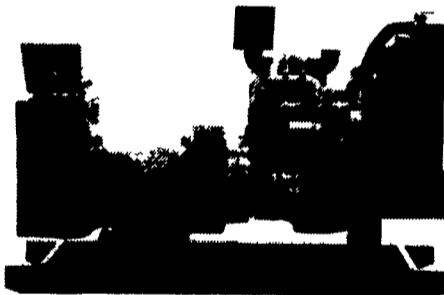
(Consignments Accepted Monday Jan. 20-Jan. 31). From 8:00 A.M. To 6:00 P.M. And Sale Day 7:00 A.M. To 9:00 A.M.

Cash Or Approved Checks Day Of Sale. Consign Early For Advertisement. Not Responsible For Accidents.

Auctioneer:
Sam Walters III
(302) 284-4619
Canterbury, DE.

Lunch Served

GENERATORS



DIESEL
L.P. GAS
P.T.O.
NEW & USED

SPECIALIZING IN COMPLETE
AUTO START STANDBY POWER SYSTEMS

For Sales and Service Call The Manufacturer

MARTIN ELECTRIC PLANTS

RD #2 Pleasant Valley Rd., Ephrata, PA 17522

Tel: 717-733-7968 Fax: 717-733-1981

MESSICK'S

OPEN HOUSE

JANUARY 27 - FEBRUARY 1

See Section B
Pages 22 - 27

MESSICK FARM EQUIPMENT, INC.

Farm Equipment Is Our Business
RHEFMS EXIT, RT 283, ELIZABETHTOWN, PA