

# Farm And Home Foundation Reviews Year

**LOU ANN GOOD**  
**Lancaster Farming Staff**  
**LANCASTER (Lancaster Co.)**  
 —One of the main functions of the Farm and Home Foundation is awarding scholarships to high school seniors pursuing careers in agriculture, home economics, and related fields. To date, 321 seniors have benefitted from the \$230,300 scholarship money.

During the 28th annual meeting of the Farm and Home Foundation, held January 21, three of those scholarship winners told how the scholarships have helped form their careers and benefitted the community.

"It would have been difficult if not impossible for me to attend college without the scholarship," said Leon Ressler, who received the scholarship in 1971.

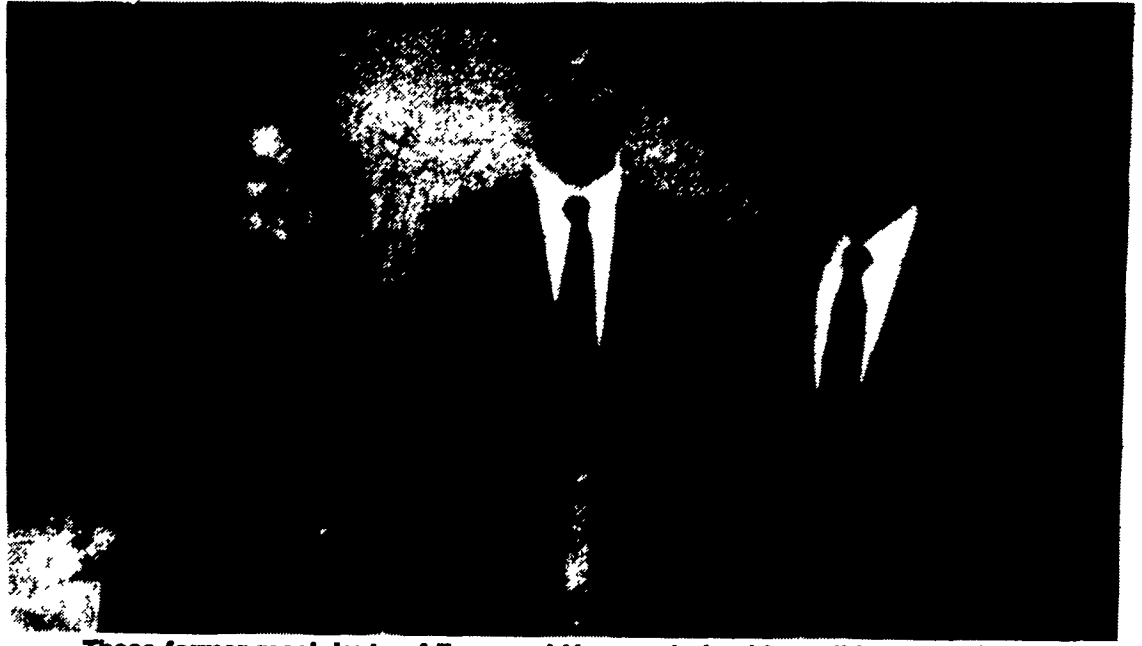
After graduating from Penn State in 1975, Leon worked for a fertilizer company and then spent six years working in Africa. It was

there that he reached the conclusion that a nation's greatest resource is the minds of the young people.

Ressler is now a Penn State Extension agriculture and environment agent who works out of the Lancaster office.

Another scholarship winner, Martha Gregory, told the Farm and Home Foundation that the scholarship money is a tangible way to encourage education in young people. Her scholarship enabled her to graduate from Penn State in 1982 with a B.S. in nutrition. After working with the WIC Program, for women, infants, and children in the Lancaster area, Martha joined Lebanon County Extension where she works with 4-H youth.

"The scholarship money was very helpful," said Phil Risser, who received a scholarship in 1978. After earning an ag engineering degree from Penn State, Risser pursued a master's degree



These former recipients of Farm and Home scholarships tell how scholarships influence careers and benefit the community. From left: Martha Gregory, 4-H Lebanon County Extension agent; Phil Risser, county farmer; and Leon Ressler, Penn State Extension nutrient management agent.



Newly-elected Farm and Home Foundation directors include, from left: Lois Brubaker, Mary Shellenberger, Evelyn Crider, J. LeRoy Esbenshade, J. Clayton Charles, Raymond Witmer, and Jim Garber.

from the University of Wisconsin. Since then, Risser has worked for Soil Conservation Services, developed a Penn State manual for ethanol production, worked on a project to develop a way to make hay for one day, taught college courses, worked for International Harvester, and received several patents for his work.

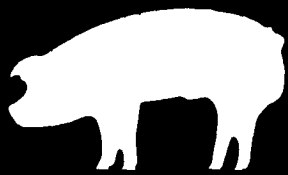
In 1987, Phil returned to Manheim Township in Lancaster County to farm in partnership with his father. In 1990, Phil and his wife, Lisa, bought out the partnership and now farm 90 acres and milk 60 cows.

The scholarship money is

derived from interest income from the late Elmer L. Esbenshade, who donated the 10.5-acre site of the Farm and Home Center in addition to leaving a financial legacy. The number of scholarships given annually depends on the income available from the fund. In 1991, 14 seniors were selected for \$1,000 scholarships. The number of scholarships to be given this year will be decided by the scholarship committee that meets in February.

The Foundation also reviewed income and expenses for the year. A new heating and ventilation sys-

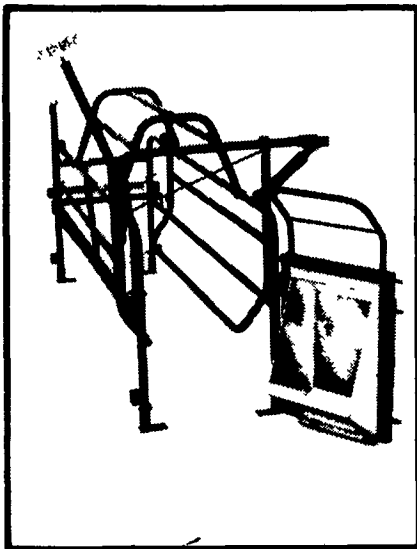
(Turn to Page A20)



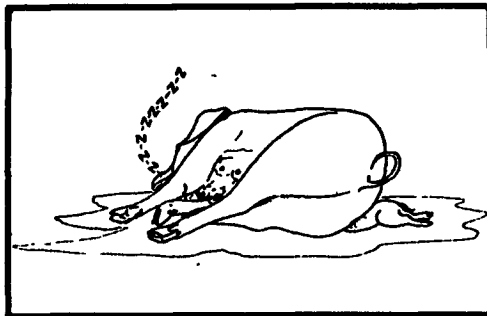
# HOG SLAT

INCORPORATED

## PROCTOR HYDRAULIC FARROWING CRATE

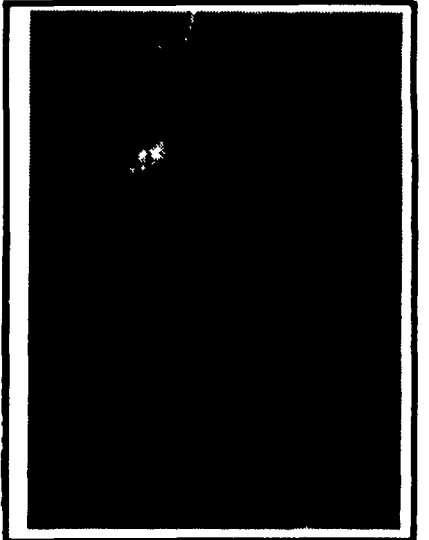


Hydraulic Farrowing Crate PREVENTS CRUSHING

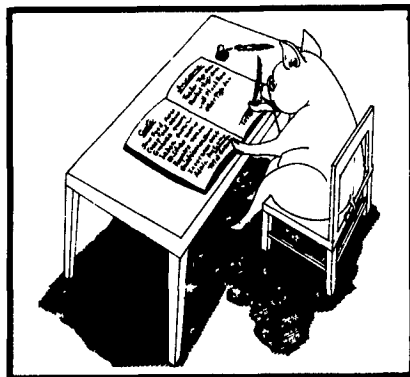


Most Losses Are Due To Crushing

PROCTOR CRATE Installed On HOG SLAT Combination Slat



HOG SLAT Proctor Crate Features A Unique Hydraulic Cylinder Which Allows The Crate's Sides To Expand And Lowers Them Gently To The Floor To Prevent Crushing.



Pig Mortality Can Put A Big Dent In Profits. Tests Confirm That The PROCTOR Crates Will Return The Initial Investment In 3 Years Or Less By Reducing Crushing!

WRITE OR CALL FOR YOUR FREE CATALOG



# TRI-COUNTY

CONFINEMENT SYSTEMS INC.

608 E. Evergreen Rd., Lebanon, PA 17042

Ph: 717-274-3488

Hours: Mon.-Fri.  
 7:00 to 4:30;  
 Sat. 8:00 to 12:00