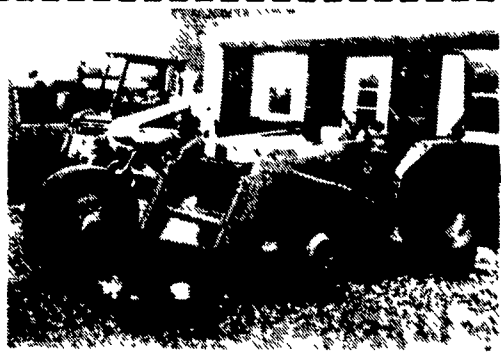


**WEED BADGER**

MODEL 2550  
ALMOST NEW  
**\$3,500**  
(717) 872-9311



**Kubota 2550**  
4 Whl. Dr. w/Loader  
**\$8,500.00**  
**J.L. HOLLINGER & SONS**  
717-664-2444



**JD 2040**  
With 145 Loader  
New Rubber, Excellent Condition  
**\$8,500.00**  
**717-733-9290**

**USED TRACTOR & COMBINE PARTS**  
Large Selection  
Save 50%

**USED TRACTORS**

- Case 530D Industrial tractor w/ loader, bad motor \$1500 as is
- Ford 971 w/bad motor \$1500 as is
- MF 65 diesel tractor, bad motor \$1500 as is
- MF 165 diesel \$5,000
- AC 5040 \$3,500
- IH 424, Nice \$3,500
- JD B \$1,000
- JD 40 \$2,400
- JD 1010 Gas w/1 R Cultivator \$1500 As is
- IH 574 gas, \$5,500
- JD M \$1,500
- JD 4630 \$14,000
- JD 2240 \$8,500

**EQUIPMENT**

- Woods, like new model 1050, 3 pt. backhoe, \$4,500
- Hardee 3 pt. stump burner \$1,850
- IH 4 Blade New ground plow, pull type \$1,000
- JD 158 loader w/4N1 bucket \$4,000
- JD 4 prong, 3 pt. subsoiler
- IH 510, 18x7 DD drill \$1,895

**W.C. Littleton & Son Inc.**  
Laurel, DE 19956  
1-800-842-7445

**FORKLIFTS**



3,000 Lb. Electric Stand Up, 3 Stage, S/S, 1984 With Under 1,000 Hours, Like New Cond., With Charger .....\$4,800



20,000 Lbs. Tow Motor, Detroit Diesel Charger .....\$8,900



6,000 Lb. Hyster Pneumatic, LPG, Side Shift, Very Good Condition.....\$2,750



8,000 lbs. Hyster, 1984, gas, see thru mast w/side shift, 2700 hrs., excel. cond. \$13,500

**3 Wheel Rubber Tire Loader With Forks & Bucket, Old But Runs Good \$2,900**

**FORKLIFTS**

- Crane 8 ton Prentice on Mack truck, very good condition..... \$8,500
- 30,000 Lb. Taylor Dual Pneumatic, Detroit Diesel, Auto, Very Good Condition \$19,500
- Forklift Attachment For Tractor Tow-Behind 6' Forks .....\$900
- Sweeper, Propane Runs Good.....\$800
- 4,000 Lb. A/C Solid Tire, Auto, LPG, Good Condition..... \$1,500
- 4,000 Lb. Cat Pneumatic, Side Shift, Smokes, Needs Little Work..... \$1,800
- 12,000 Lb. Tow Motor, Dual Pneumatic, Detroit Diesel, Side Shift, Runs Good ..... \$4,500
- Forks 25,000 Lb. Cap. .... \$750/Pair
- 3,000 Lb. Electric Walk Behind..... \$2,500
- 3,000-6,000 Lb. Cap, Electric Sit Down Rider Trucks.....CALL
- 5,000 Lb. Cat, 1981 Pneumatic LPG, Excel. Cond. .... \$6,800
- 5,000 Lb. Hyster Pneumatic, Gas, Good Condition.....\$3,900
- 4,000 Lb. AC, Pneumatic, Gas New Tires..... \$2,500

**HYMAN EQUIPMENT**

2604 Smith Ave.  
BALTIMORE, MD. 21209-2502  
**(301) 486-6691**  
Call Alan Hyman Anytime  
30 Forklifts In Yard  
At This Time  
Mechanic Specials \$500 to \$1500

**USED EQUIPMENT**

**SPECIAL**  
JD 2955  
Cab Tractor  
Demo

**TRACTORS**

- JD 4440.....Coming In
- JD 4230.....Coming In
- Ford 3000.....\$ 5,500
- JD 4450 SG, Cab.....\$39,900
- JD 2840 w/Ldr.....\$12,900
- JD 2630 Reconditioned.....\$11,900

**DIESEL COMPACTS**

- JD 670 w/Mower & Loader.....Coming In
- JD 1050 w/Ldr. 500 Hrs.....\$12,900
- JD 855 w/Loader.....\$ 9,500
- Ford 1720 MFWD, 56 Hrs., w/Ldr. And Backhoe.....\$17,700
- Ford 1510.....\$ 6,600
- Ford 1500 w/Mower.....\$ 5,000

**COMBINES**

- JD 6620 Side Hill.....\$33,000
- JD 215 Flex Head.....\$ 4,900
- JD 653A Row Crop Head.....\$ 7,900
- JD 444 Corn Head.....\$ 4,400
- JD 443 Corn Head.....\$ 4,500
- JD 244 Head.....\$ 2,800
- IH 715 w/Grain Head.....\$ 9,000

**PLANTERS - DRILLS**

- JD 8250 18x7.....Coming In
- JD 7200 12 Row Flex-Fold.....\$25,000
- JD 7000 6R Liquid.....\$ 6,900
- Krause 5200 No-Til Drill.....\$ 8,900
- Hay Buster G-D, 107.....\$ 6,300
- 510 Drill 13DD Opener.....\$ 2,900
- JD FBB.....\$ 1,300

**TILLAGE**

- JD 610 25' Chisel Plow.....\$11,500
- JD 2500 6/18 Spring Reset Plow.....\$ 3,500
- JD 1600 14' 3 Pt. Chisel Plow.....\$ 2,800
- JD 260 Loader.....\$ 3,900

**HAY & HARVESTING**

- JD 435 Round Baler.....\$10,900
- JD 530 Round Baler.....\$12,500
- JD 1209 Mo/Co.....\$ 2,900
- Grimm Super 8' Tedder.....\$ 1,295
- JD 450 Hydro Push.....Coming In
- NH 718 w/Heads.....\$ 1,800

**NEW EQUIPMENT**

New Combines In Stock:  
4435, 9400, 9500, 9600  
New Heads:

- 913 Flex Head
- 915 Flex Head
- 918 Flex Head
- 920 Flex Head
- 443 Corn Head
- 643 Corn Head

**TOBIAS EQUIPMENT CO., INC.**

Halifax, PA 17032  
Phone: 717-362-3132

**10-20% OFF**  
ALL DEUTZ-ALLIS PARTS!



Refreshments Available All Day!

**THURSDAY & FRIDAY, JANUARY 30th & 31st**

Join Us For The Latest On Deutz-Allis and Agco Equipment & Parts  
Agco Management Will Be Here Thursday to Answer All Your Questions.

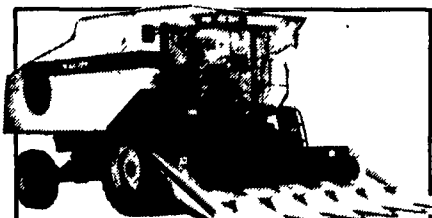
**WINTER SERVICE SPECIAL**



**10% OFF**

parts and labor on all major repairs

Offer Good Thru 3/1/92

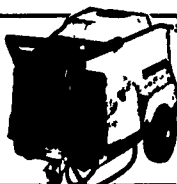


SEE THE NEW SERIES 2 GLEANER COMBINES



DRIVE THE NEW AGCO ALLIS TRACTORS

**KARCHER PRESSURE WASHERS**



In stock now and on special during Open House

**QUALITY EQUIPMENT IN STOCK**

**New Equip.**

**Used Equip.**

- AA 4660 Tractor, 2 WD
- AA 5680 Tractor, 2 WD
- AA 6690 Tractor, 4 WD, Cab
- AA 7600 Tractor, 2 WD
- AA 8630 Tractor, 4 WD
- DA 7085 Tractor, 2 WD
- Gleaner R-42 Combine
- DA 1250 Field Cultivator, 10 1/2'-13 1/2'
- DA SM60RC Mower-Conditioner
- DA 150 Rotary Rake
- Pequea 6 Ton Running Gear
- AC 190XT Tractor, Cab, Exc. Cond.
- AC 185 Tractor, Exc. Cond.
- JD 3200 Series 5 Bottom Plow
- Better-Bilt 3200 Gal. Tank Spreader w/injectors
- 630 Cornhead for N & R Series Combine
- 15 Ft. Series 3 Flex For N & R Series Combine

MANY MORE SPECIALS DURING OPEN HOUSE!  
STOP IN AND SAVE!!

**HERNLEYS FARM EQUIP., INC.**

"Your Nearest Deutz-Allis Dealer"

**(717) 367-8867**

2095 S. Market St., Elizabethtown, PA  
(Rt. 230 Between Mt. Joy and Elizabethtown)



CHECK OUR LAWN & GARDEN SPECIALS!  
WE SHIP UPS DAILY