

35 TRUCKS & TRAILERS



1977 Kenworth W900
350 Cummins, 13-Speed Jake Brake, Air Ride, Wet Line, Just Overhauled 10,000 miles ago.
\$6,500 (OBO)
Call: (717) 898-0129

MOTORS
New & Rebuilt
350, 366,
427, 464
6.2 Diesels
Rebuilt & Used
Will Install
Roll Back Service
(at cost)
717-762-6415

1970 Diamond Reo van body, excellent condition, 198,000 miles
C-190 Cummins diesel, RT510 Road Ranger, Unisteel aluminum body, 20"x92"x90", 2 hinged doors and curbside door.
\$3995 complete
\$1795 chassis only,
\$2495 body only or best offer

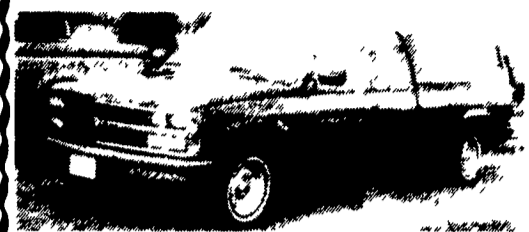
Jim Amand 717/626-2145

1989 Chevrolet K-3500 extend-a-cab, 4 WD truck w/10' bed, 4' roof rack, 38,000 miles, 454 auto, air, loaded. Set up for pulling gooseneck or conventional.

1988 Ford Super Duty F-450 Truck, 5 speed w/OD, 460, 12' bed w/roof rack, 65,000 miles, set up for towing.

1988 GMC truck w/11' bed, 350 automatic, 38,000 miles

717-345-4882



1988 Chev Ext. Cab 1500
52,000 Miles, Auto, 305, PS, Air, AM-FM
(717) 865-4810

FOR SALE BY OUT-GOING SURGE AND PATZ DEALER:

- (1) 1975 12' Chevy Step Van with Grumman aluminum body - manual transmission
- (1) 1978 12' Chevy Step Van with Grumman aluminum body - automatic transmission
- (1) 1989 22' Surge/TEAM Chevy Step Van w/Detroit 8.2 diesel engine - automatic transmission - Union City aluminum body - low mileage - designed and set up for route sales - many other features too numerous to mention.

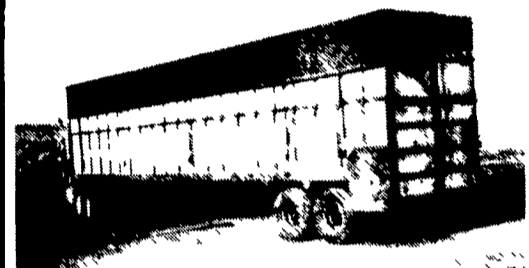
Patz Inventory - crated - ready for pick-up. Approximatley \$20,000 dealer cost. List will be provided on request.

If interested, please call

(717) 265-2200 between 8 am and 5 pm



1987 Ford F250 Lariat
52,000 Miles, 4 Sp., 302 F.I., Cruise, Tilt, AM-FM Tape, Sliding Rear Window, Anti-Lock Rear
(717) 865-4810



FOR SALE

1983 Jones "Live-Bottom" Trailer (Same as Bo-Cat) 42' long, 13'2" high, new landing gear, roll tarp, 11x22.5 tubeless radials, new springs, equalizers, good tires, good brakes, good condition, ready to go to work.

1972 Strick van trailer, 45'Lx13'6"H, good for road or storage.

Call 717-758-2223

USED TRUCKS



1987 GMC Sierra Valley 4x4, Dually AT, PS, PB, Air, AM-FM, 454 Engine, Bedliner, Runs Great

\$10,500



1988 Chevy C30 Crew Cab Scottdale, 454 PS, PB, AC, PW, PDL, Dual Tank, Rear Sliding Window, 43,000 Miles



1986 Chevy Dually Crewcab, Choo-Choo Custom, 454, PS, PB, AC, Auto, PS, PDL, Tilt Wheel, Cruise, AM-FM Stereo Cass, Rear Sliding Window, 46,000 Miles

\$11,900



1988 Chev 1/2 Ton Pickup, 350 FI Auto, PS, PB, AC, AM & FM Stereo, Two Tone Blue & Silver, 47,000 Miles

\$9,400



* ONLY 107,000 ORIGINAL MILES * ORIGINAL OWNER 1988 WHITE GMC 355 Cummins - 9 Speed, Air Ride - Many Extras, Excellent Condition

\$39,500

(607) 387-6020 Evenngs

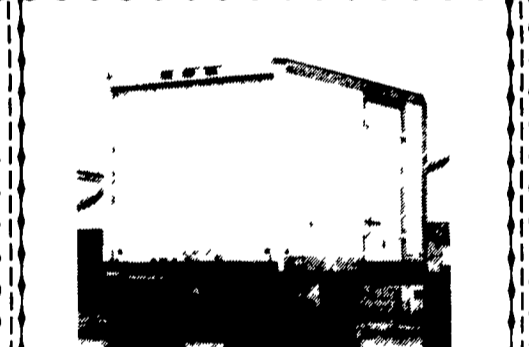


1987 Vermeer TS 50" Treespade

Mounted on 1987 C50 Chevy truck - low miles - on unit. Brand new 350 4 bolt eng. - ready for spring.

\$25,000

609-397-0002



12 Ft. Morgan Box, 7 1/2 High Pull Out Ramp, Excellent Condition Asking \$1,200 (215) 268-8735

Financing Available

New Location

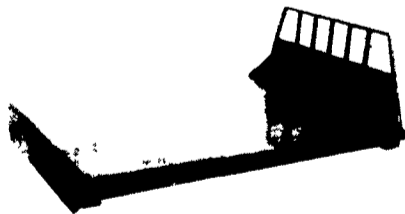
MARTIN'S AUTO SALES

1025 W. Main St., New Holland, PA 17557

(717) 656-6621

Replacement Truck Bodies

We Carry A Full Line Of Truck Body Accessories



Installation and Custom Fabrication Available

Length	Width	Frame Width	Price
7 Ft	66 or 78"	34, 38 or 40"	\$575
8 1/2 Ft	80 or 90"	34 or 38"	\$595
10 Ft	90"	34 or 38"	\$725
11 Ft	90"	34 or 38"	\$850
12 Ft	90"	34 or 38"	\$960
14 Ft	90"	34 or 38"	\$1050
16 Ft	90"	34 or 38"	\$1200
18 Ft	90"	34 or 38"	\$1400
20 Ft	90"	34 or 38"	\$1600

Standard Features Include:

- Headboard (Square or Tapered), Stake Pockets, Rubrail, Diamond Plate or 2" Wood Floor, Heavy Duty Construction

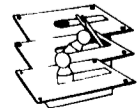
Plastic Wood Slats For Body Racks



Drop Hinge Scissor Hoists



Truck Tool Boxes



Goose Neck Ball Hitches



Trailer Hitches

Write For A Free Catalog

Ringo Hill Farms Equipment Co.

1624 Route 212 Quakertown, PA 18951
215-346-7340 Fax 215-346-8041



FOR EXCEPTIONAL VALUES

IN USED EQUIPMENT:

POSSUM BELLY TRAILERS

- 1989 Wilson 48'x13'6" Cattle-Hog Combo
- 1986 Eby 30'x12'x96" Double-Deck Straight Hog Trailer
- 1984 Barrett 46'x13'6"x96" Cattle Trailer
- 1983 Wilson 45'x13'6"x96" Cattle-Hog Combo
- 1978 Wilson 46'x13'4"x96" Cattle Trailer
- 1976 American 44'x13'2"x96" Cattle-Hog Combos
- 1974 Wilson 43'x13'2"x96" Cattle-Hog Combo

STOCK TRAILERS

- 1986 Keifer 22'x8' Aluminum Gooseneck
- 1987 Eby 20'x8' Electric Brakes
- 1990 Eby 26'x8', Hyd. Brakes
- 1989 Moritz 14' Bumper Hitch
- 1989 Moritz 12' Bumper Hitch

GRAIN TRAILERS

- New 1992 Timpte 42'2"x66" sides
- 1988 J&J, 35', 3-Axle Aluminum Dump

BODIES

- (2) Eby Cattle Body 12'
- 21' Eby Cattle Body
- 24' Eby Cattle-Hog Body

M.H. Eby, Inc.

Route 23
Blue Ball, PA 17506
717/354-4971 800/292-4752
FAX: 717/355-2114

M.H. Eby, Ohio

4435 State Route 29
West Jefferson, OH 43162
614/879-6901 800/752-0507
FAX: 614/879-6904