

Lancaster Co. Livestock Market Auctions

Lancaster Livestock Auction

Lancaster, Pa.
Monday, January 13, 1992
Cattle Calves Hogs Sheep Goats
Monday's Auction
1156 86 231 830 411
Last Monday's Auction
934 73 366 1072 391
Last Year's Auction
969 80 225 992 418
CATTLE: Slaughter steers 1.00-1.50 higher, instances 2.00 higher; slaughter heifers 50 to mostly 1.00 higher; cows steady; bullocks steady; bulls fully steady. Supply included 53% slaughter steers, 19% slaughter heifers, 21% cows, and 7% bulls.

SLAUGHTER STEERS: Choice 2-4 1100-1425 lb 69.50-72.50, few 72.50-73.00; High Choice and Prime 2-4 1125-1400 lb 72.75-74.00; Choice 3-4 1440-1650 lb 64.00-67.00; Select and low Choice 2-3 1100-1425 lb 65.00-68.75, 1450-1650 lb 61.00-64.50; few Select 2-3 1100-1400 lb 63.00-64.50.

HOLSTEINS: Choice 1300-1500 lb 59.00-61.75, 1500-1730 lb 57.75-59.00; High Choice and Prime 1320-1475 lb 62.00-64.50; Select 1150-1450 lb 55.00-59.00.

SLAUGHTER HEIFERS: Choice 2-3 1000-1325 lb 64.50-68.50, few 1150-1250 lb 68.50-69.25; couple Choice 2 1150-1325 lb 71.00-72.00; Select 2-3 975-1250 lb 60.00-64.75.

COWS: LO DRESSING BULK HI DRESSING Breaking Utility & Commercial 2-3 47.00-49.50 49.50-50.50 Commercial 3-4 43.00-47.00 Cutter & Boning Utility 1-2 45.00-46.00 46.00-48.50 48.50-50.00 Canner & low Cutter 41.00-43.00 43.00-45.50.

BULLOCKS: Choice 2-3 1060-1350 lb 64.75-68.75; Select 1-3 1000-1325 lb 60.25-63.75.

BULLS: Yield grade 1 1350-2000 lb 62.75-67.75, couple 1790-1930 lb 68.25-69.25, couple 1830-1970 lb 73.50-74.50; Yield grade 2 1000-1600 lb 58.75-63.00, low dressing 57.00-58.75.

CALVES: Vealers steady; slaughter calves steady, instances 5.00 lower. Demand good for Holstein bulls and heifers to return to farm.

VEALERS: Couple High Choice and Prime 250-325 lb 115.00-120.00; couple Choice 250-325 lb 100.00-112.00; high Good and low Choice 190-350 lb 75.00-95.00, 80-110 lb 50.00-65.00.

SLAUGHTER CALVES: Good and Choice 300-450 lb 65.00-80.00.

RETURNED TO FARM: Bulk 90-125 lb Holstein bulls 125.00-150.00; few 90-115 lb Holstein heifers 110.00-130.00.

HOGS: Barrows and gilts steady to 1.00 lower; sows 50-1.00 lower.

BARROWS AND GILTS: US 1 215-235 lb 37.50-39.00. US 1-3 210-255 lb 35.00-36.00.

SOWS: US 1-3 300-650 lb 25.00-27.50.

BOARS: All weights 22.00.

SHEEP: Woolled lambs firm to 2.00 higher; slaughter ewes mostly steady.

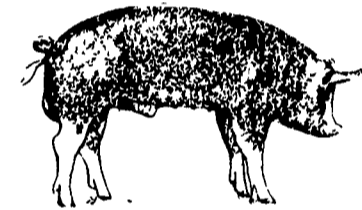
WOOLED LAMBS: Choice 80-110 lb

Vintage Livestock Market

PARADISE, PA
January 14, 1992
CATTLE 694...USDA... Supply included 33% slaughter steers and 60% cows... Compared with Monday's market: Slaughter steers steady, instances .50 higher on Choice 2; Heifers, Bullocks, and Bulls not tested; Cows .50 to 1.00 higher, early sales mostly 1.00 higher. Choice 2-4, 1100/1450 lbs. slaughter steers 69.75-73.25, few 73.25-73.75, Choice #2, 1075/1375 lbs. 73.50-75.00, couple 75.50-75.75, 3 to mostly 4, 1250/1550 lbs. 63.00-67.50, Select and low Choice 2-3, 1100/1425 lbs. 65.00-68.00, few Select 2-3, 1150/1450 lbs 58.00-64.00; Select & Choice 1365/1575 lbs. Holsteins 56.75-60.25. Breaking Utility & Commercial sl. cows 2-3 bulk 48.00-50.50 high dressing 50.50-53.00, Cutter & Boning Utility 1-2, low dressing 45.00-47.50, bulk 47.75-50.00, high dressing 50.00-51.75, Canner & Low Cutter, low dressing 40.00-43.00, bulk 43.00-46.00. Few Yield Grade 1-2, 1400/1900 lbs. sl. bulls 59.50-64.50.

CALVES 822... Supply included 711 in graded sale of which 94% sold to return to farm... Vealers steady, instances 10.00 higher on High Good and Low Choice 70/110 lbs. Few Choice 135/175 lbs. 85.00-95.00, High Good and Low Choice 170/300 lbs. 68.00-80.00, 75/110 lbs. 68.00-78.00, Standard and Low Good 55/75 lbs. 48.00-60.00. Couple Choice slaughter calves 425/470 lbs 70.00-73.00. Farm Calves: Holstein Bulls 110/125 lbs. 135.00-144.00, 95/105 lbs. 155.00-160.00, 80/90 lbs. 125.00-134.00 Small Frame 80/115 lbs. 106.00-117.00, 90/95 lbs. 126.00; Hol. Heifers 100/125 lbs. 172.00-175.00, 90/95 lbs. 127.00-129.00, Small Frame 70/95 lbs 70.00-80.00.

SHEEP 0...No market test. - all per cwt.
GOATS 0...No market test. - all per head.



60.00-70.00, 50-75 lb 70.00-80.00; Good to low Choice 65-95 lb 55.00-60.00.

NEW CROP LAMBS: Choice 25-40 lb 100.00-120.00, 45-60 lb 80.00-100.00, 80-100 lb 70.00-80.00.

SLAUGHTER EWES: Utility and Good 25.00-40.00; Yearlings and two-year olds 30.00-50.00.

GOATS: All goats sold by the head. Large 75.00-100.00, Thin 55.00-75.00; Medium 50.00-60.00, Thin 45.00-50.00; Small, mainly kids, 40.00-50.00; few Thin 30.00-40.00.

Lancaster Livestock Auction

Wednesday's market report has been discontinued until further notice because of insubstantial receipts.

Belleville Livestock Auction

BELLEVILLE, PA
JANUARY 15, 1992
CATTLE 95... PDA... Compared with last Wednesday's market. Sl. cows .75 to 2.00 higher. One Select Holstein slaughter steer 59.00, two Standard 53.75 & 57.50. One Choice sl. heifer 68.10. Breaking Utility and Commercial slaughter cows 45.50-49.50, Cutter and Boning Utility 44.50-49.00, Canner and low Cutter 40.50-44.50, Shells down to 36.50. Few Yield Grade No. 1, 1295/1425 lbs. slaughter bulls 53.75-56.50, one No.2, 1150 lbs. 51.50.

CALVES 110...Standard and Good 70/100 lbs. vealers 65.00-86.00, few Utility 50/75 lbs. 56.00-61.00. FARM CALVES: No. 1, 90/125 lbs. Holstein bulls 120.00-167.50, No. 2, 80/125 lbs. 85.00-110.00; few No. 1, Hol. Heifers 90/115 lbs. 97.00-157.50. Few Beef Cross 75/100 lbs. bulls and heifers 92.50-120.00.

HOGS 138...BARROWS & GILTS: 1.75 to 2.00 higher. US No.1-2 200/260 lbs. barrows and gilts 37.60-38.85, couple individuals to 42.75, 2-3 260/300 lbs. 35.50-37.25. US No. 1-3 380/600 lbs. sows 28.00-38.00. Two Boars 20.00 & 23.00.

FEEDE PIGS 136...US 1-3 20/35 lbs. feeder pigs 16.00-20.00, 35/50 lbs. 19.00-26.00, few lots 75/100 lbs. 33.00-36.00. --- all per head.

SHEEP 15...Slaughter sheep 12.00-23.00. - all Cwt.

GOATS 0...No market test. --- all per head.

HOLSTEIN DAIRY COWS \$800.00-1160.00, few \$1400.00 --- PER HEAD.

Jersey Shore Livestock Market, Inc.

Auction every Thursday at 4:00 p.m.
Jersey Shore, Pa.

Report supplied by Auction Thursday, Jan. 16, 1992

RETURN TO FARM CALF 1.00-1.70.

GOOD VEAL: 70.00-99.00.

COMMON VEAL: 51.00-69.00.

CHOICE STEERS: 68.00-71.00.

SELECT STEERS: 62.00-67.00.

COMMON STEERS: 50.00-61.00.

COMMERCIAL COWS: 45.00-50.00, FEW 53.00.

CANNERS-CUTTERS: 41.00-49.00.

SHELLS: 30.00-40.00.

CHOICE HEIFERS: 65.00-73.00.

SELECT HEIFERS: 61.00-64.00.

COMMON HEIFERS 50.00-64.00.

GOOD FEEDERS: 65.00-80.00.

COMMON FEEDERS: 50.00-64.00.

BULLS: 53.00-66.00.

GOOD HOGS: 34.00-40.00.

New Holland Livestock Auction

Lancaster, Pa.
Thursday, January 16, 1992
Cattle Calves Sheep Goats

Today 819 621 75 30

Last Thursday 981 706 96 81

Last Year 782 629 66 65

CATTLE: Slaughter steers and heifers fully steady; cows steady, instances 1.00 lower on Canner and low Cutter; bullocks not fully tested; bulls steady. Supply included 33% slaughter steers and 49% cows.

SLAUGHTER STEERS: Choice 2-4 1110-1425 lb 70.00-73.00; few Mixed Choice and Prime 2-3 1175-1425 lb 72.50-74.00; Select and low Choice 2-3 1100-1425 lb 67.00-69.50; few Select 2-3 1100-1400 lb 58.00-64.00.

HOLSTEINS: Select and low Choice 1400-1715 lb 57.00-60.00, one lot High Choice and Prime 1400 lb 64.00.

SLAUGHTER HEIFERS: Choice 2-3 1020-1285 lb 67.00-69.00; Select 2-3 950-1150 lb 62.00-66.00.

COWS: LO DRESSING BULK HI DRESSING Breaking Utility & Commercial 2-3 48.00-51.50 52.00-53.25. Cutter & Boning Utility 1-2 45.00-47.00 47.75-50.00 50.50-52.25. Canner and low Cutter 40.00-42.50 42.50-45.75.

BULLS: Yield grade 1 1350-1950 lb 62.50-66.00, three head 1400-2440 lb 67.00-68.00; yield grade 2 1050-1650 lb 58.75-62.50, few low dressing 56.50-58.50.

CALVES: Vealers over 200 lb mostly steady, high Good and low Choice 70-110 lb 10.00-15.00 higher, or 20.00-25.00 higher than last Thursday. Demand good for Holstein bulls and heifers to return to farm.

VEALERS: Few Choice 300-395 lb 88.00-93.00, individual 250 lb 106.00; high Good and low Choice 150-270 lb 69.00-74.00, 80-110 lb 75.00-90.00; Standard and low Good 55-80 lb 60.00-75.00.

SLAUGHTER CALVES: Few Choice 415-455 lb 70.00-73.00.

RETURNED TO FARM: Bulk 95-125 lb Holstein Bulls 135.00-165.00, 85-95 lb 110.00-135.00; small frame 95-120 lb 100.00-135.00, 75-95 lb 75.00-95.00; Bulk 90-120 lb Holstein Heifers 135.00-165.00, few 165.00-182.00; small frame 90-115 lb 100.00-130.00, 75-90 lb 82.00-100.00.

SHEEP: Small supply Woolled lambs and slaughter ewes fully steady; few 20-50 lb New Crop Lambs 10.00-15.00 higher.

WOOLED: Choice 70-90 lb 60.00-75.00, few 50-70 lb 75.00-90.00; Few Choice 20-50 lb New Crop Lambs 118.00-145.00.

SLAUGHTER EWES: Utility and Good 22.00-40.00.

GOATS: All goats sold by the head. Few Large 75.00-98.00, couple 110.00-118.00, Medium 48.00-67.00; few Small 30.00-45.00.

Lancaster County Weekly

Lancaster, Pa.
Friday, January 17, 1992

This Week 2900 1530

Last Week 3045 1666

Last Year 2820 1527

CATTLE: Slaughter steers 1.00-2.00 higher, most advance on Choice and Prime 1150-1350 lb; slaughter heifers 50-1.00 higher; cows 50 to mostly 1.00 higher, bullocks steady; bulls fully steady. Supply included 38% slaughter steers, 10% slaughter heifers, 37% cows, 5% bulls, with the balance feeders.

SLAUGHTER STEERS: Choice 2-4 1100-1450 lb 69.75-73.25, few 73.25-73.75; mixed Choice and Prime 2-3 1075-1425 lb 73.00-75.00, couple 75.50-75.75; Choice 3 to mostly 4 1250-1550 lb 63.00-68.00; Select and low Choice 2-3 1100-1425 lb 65.00-68.75; few Select 2-3 1100-1450 lb 58.00-64.00

HOLSTEINS: Choice 1300-1500 lb 59.00-61.75, 1500-1730 lb 57.75-59.00, High Choice and Prime 1300-1475 lb 62.00-64.50; Select 1150-1700 lb 55.00-59.00.

SLAUGHTER HEIFERS: Choice 2-3 1000-1325 lb 64.50-68.50, few 1150-1250 lb 68.50-69.25; couple Choice 2 1150-1325 lb 71.00-72.00; Select 2-3 950-1250 lb 60.00-65.50.

COWS: LOW DRESSING BULK HIGH DRESSING Breaking Utility & Commercial 2-3 48.00-50.50 50.50-53.25 Commercial 3-4 43.00-47.00 Cutter and Boning Utility 1-2 45.00-47.00 47.00-50.00 50.00-52.25 Canner and low Cutter 40.00-43.00 43.00-46.00.

BULLOCKS: Choice 2-3 1060-1350 lb 64.75-68.75; Select 1-3 1000-1325 lb 62.25-63.25.

BULLS: Yield grade 1 1350-2000 lb 62.75-67.75, couple 1790-2440 lb 68.00-69.25, couple 73.50-74.50, Yield grade 2 1050-1650 lb 58.75-63.00, low dressing 56.50-58.75.

CALVES: Vealers over 200 lb mostly steady, high Good and low Choice 70-110 lb closed 20.00-25.00 higher; slaughter calves steady, instances 5.00 lower. Demand good for Holstein bulls and heifers to return to farm.

VEALERS: Couple High Choice and Prime 250-325 lb 115.00-120.00; Choice 135-395 lb 88.00-95.00, couple 250-325 lb 106.00-110.00; high Good and low Choice 150-350 lb 68.00-80.00, 80-110 lb closed 75.00-90.00; Standard and low Good 55-75 lb 60.00-75.00, few early 48.00-60.00.

SLAUGHTER CALVES: Good and Choice 300-470 lb 65.00-80.00.

RETURNED TO FARM: Bulk 95-125 lb Holstein bulls 135.00-165.00, 85-95 lb 110.00-135.00; small frame 95-120 lb 100.00-135.00, 75-95 lb 75.00-95.00. Bulk 90-120 lb Holstein heifers 135.00-165.00, few 165.00-182.00; small frame 90-115 lb 100.00-130.00, 70-95 lb 70.00-100.00

Estimated Daily Livestock Slaughter

Under Federal Inspection
January 15, 1992

	CATTLE	CALVES	HOGS	SHEEP
WED., 01/15/92 (EST)	127,000	6,000	342,000	21,000
WEEK AGO (EST)	127,000	6,000	345,000	19,000
YEAR AGO (ACT)	126,000	7,000	317,000	23,000
WEEK TO DATE (EST)	379,000	17,000	1,014,000	63,000
SAME PD LT WK (EST)	377,000	17,000	1,026,000	62,000
SAME PD LT YR (ACT)	370,000	21,000	942,000	68,000

LEBANON VALLEY LIVESTOCK MARKET, INC.

1 mile East of Fredericksburg along Rt. 22
PHONE 865-2881

Flea Market Auction every Tuesday at 12:30. Tools, Eggs, Produce, etc.

Buyers & Sellers Welcome

B&R CATTLE CO.

RD 1, Marietta, PA 17547

Office Phone: (717) 653-8164

Specializing In Stockers & Feeders

JOHN BOWMAN

Ph (717) 653-5728

RON RANCK

Ph (717) 656-9849

HAY, STRAW & CORN — SALE —

Please Note New Sale Time! Starting Jan. 3 Sale Starts 10 AM Every Friday At 10 AM

GREEN DRAGON MARKET & AUCTION

RD No. 4 Ephrata, Pa. 717-738-1117
1 mile North of Ephrata on N. State St.

Out of State Buyers - Cash or Certified Check Only



Open 24 hours a day

365 days a year

(717)394-2611

AUCTIONS

MONDAY

9:00 A.M. - Slaughter Bulls, Heifers, Steers, Cows

10:00 A.M. - Goats, Veal Calves, Lambs

12 Noon - Slaughter Hogs

WEDNESDAY

8:00 A.M. - Slaughter Hogs

10:00 A.M. - Slaughter Bulls, Heifers, Steers, Cows

11:00 A.M. - Veal Calves, Lambs

FRIDAY

11:00 A.M. - Stocker and Feeder Cattle

SATURDAY

8:00 A.M. - Slaughter Hogs

Next Feeder Cattle Sale Friday, Jan. 24 - 11:00 A.M.

LANCASTER STOCKYARDS, INC.

1147 Litz Pike, Lancaster, Pennsylvania 17601
Serving The Community For 96 Years

VINTAGE SALES STABLES, INC.

SALE TUESDAYS

11:00 A.M.

SLAUGHTER CATTLE AUCTION — STEERS, BULLS, HEIFERS, COWS, FEEDER CATTLE

7:30 P.M.

CALVES, SHEEP, GOATS * GET CALVES IN EARLY — OUR STATE GRADER STARTS AT 1:00 P.M.