

Central U.S. Carlot

Beef Report

January 15, 1992

Report supplied by USDA

CENTRAL U.S. CARLOT BEEF REPORT (INCLUDES THE MAJOR PRODUCTION AREAS IN THE MIDWEST AND TEXAS) AS OF 3 P.M. COMPARED TO TUESDAY'S 3 P.M. REPORT: COMPARED TO TUESDAY'S 3 P.M. REPORT: BREAKING UTILITY CARCASSES \$1.00 HIGHER; BONING UTILITY STEADY WITH A FIRM UNDERTONE; CUTTER FIRM. DEMAND LIGHT TO MODERATE FOR LIGHT OFFERINGS.

COW & BULL CARCASSES

FOB OMAHA BASIS

9 LOADS REPORTED

UT, BRK 2-4, 450 & UP, 2 LOADS, RANGE 78.00, LATEST ESTB. MKT. 78.00.

UT, BNG 1-3, 400 AND UP, 4 LOADS, RANGE 82.00-82.50, LATEST ESTB. MKT. 82.00-82.50.

CUTTER 1-2, 350 & UP, 3 LOADS, RANGE 93.00, LATEST ESTB. MKT. 93.00.

BULLS 500/UP, YG 1, LATEST ESTB. MKT. 102.00 A.

BONELESS PROCESSING BEEF/ BEEF TRIMMINGS

106 LOADS REPORTED

FRESH 90% BONELESS BEEF IN

MIDWEST MOSTLY \$1.00 HIGHER, AND IN TEXAS, 2.00-3.50 HIGHER; OTHER TYPES NOT TESTED. DEMAND MODERATE FOR LIGHT TO MODERATE OFFERINGS. BEEF TRIMMINGS FIRM ON LIGHT DEMAND AND OFFERINGS.

FOB OMAHA BASIS

90%FR, 9 LOADS, RANGE 127.5-128.0, WT. AVG. 127.78.

90%FZ, UNQUOTED.

85% FR, UNQUOTED.

85%FZ, UNQUOTED.

75%FR, RANGE 91.00, WT. AVG. 91.00 A.

75%FZ, UNQUOTED.

65%FR, RANGE 68.0, WT. AVG. 68.00 C.

65%FZ, UNQUOTED.

50%FR, 44 LOADS, RANGE 36.00-37.00, WT. AVG. 36.43.

50%FZ, 24 LOADS, RANGE 41.00-43.00, WT. AVG. 41.35.

50%BX, 2 LOADS, RANGE 38.00-39.00, WT. AVG. 38.50.

BULL: 92-94, RANGE 143.00, WT. AVG. 143.00 A.

90%FR, 23 LOADS, RANGE 127.00-130.0, WT. AVG. 128.02.

90%FZ, 4 LOADS, RANGE 129.5-130.0, WT. AVG. 129.88.

85%FR, UNQUOTED.

85%FZ, UNQUOTED.

75%FR, UNQUOTED.

FOB EAST TEXAS AND OKALHOMA

90%FR, 23 LOADS, RANGE 127.00-130.0, WT. AVG. 128.02.

90%FZ, 4 LOADS, RANGE 129.5-130.0, WT. AVG. 129.88.

85%FR, UNQUOTED.

85%FZ, UNQUOTED.

75%FR, UNQUOTED.

75%FZ, UNQUOTED.
65%FR, UNQUOTED.
65%FZ, UNQUOTED.
BULL: 92-94 UNQUOTED.
CAF NORTHEAST AREAS
90%FR-65% FR, UNQUOTED.
ABCDE AFTER QUOTES REPRESENTS DAYS SINCE LAST ACTUAL MARKET TEST. QUOTES ARE DROPPED AFTER 5 DAYS OF NO TEST OR BEFORE IF THEY NO LONGER REFLECT CURRENT MARKET CONDITIONS.

Friend's Stockyard Inc.

Accident, Md. 21520

January 13, 1992

STOCK BULLS AND STEERS (200-500 LBS.) 70.00-96.00.

STOCK HEIFERS 60.00-82.50.

SLAUGHTER STEERS GOOD TO CHOICE 67.00-72.00; MEDIUM TO GOOD 62.00-66.50; HEAVY CHOICE OVER 1450 LBS. 61.00-65.00.

HOLSTEIN STEERS HEAVY 55.00-60.50; LIGHT 50.00-58.00.

SLAUGHTER HEIFERS GOOD TO CHOICE 65.00-69.75; MEDIUM TO GOOD 55.50-64.75.

BULLS HEAVY 55.00-65.50; LIGHT 50.00-61.00.

COWS FEW HIGH DRESSING 47.00-52.00; UTILITY HOLSTEIN 44.00-49.00, CANNERS 43.00-47.00, COMMERCIAL TO GOOD 40.00-45.00, CULL COWS 40.00 AND DOWN.

VEALS GOOD TO CHOICE 75.00-96.00, MEDIUM TO GOOD 66.00-74.00.

BOB CALVES 50.00 AND DOWN.
HOLSTEIN BULL CALVES, RETURN TO FARM (90-120 LBS.) 125.00-160.00.
HOLSTEIN HEIFER CALVES, RETURN TO FARM (100-120 LBS.) 110.00-171.00.
FEW INDIVIDUAL HOGS 39.50-40.00.
HOGS TOP QUALITY 35.50-37.00, HEAVY 35.00-36.50, LIGHT 32.00-35.00.
SOWS 24.00-34.50.
MALE HOGS: 20.00-24.00.
LAMBS: 45.00-56.00.
LIVESTOCK PRICES ARE ALL GIVEN PER HUNDREDWEIGHT!

Grantsville Livestock

Grantsville, Maryland

Sat., January 11, 1992

HOGS: TOP BARROWS & GILTS 35.50-37.00; HEAVY BUTCHER 34.00-37.25; LIGHT BUTCHER 32.00-36.00; BUTCHER SOWS 28.00-34.50; FEEDER SHOATS 10.00-35.00.

VEAL: GOOD 85.00-105.00; STANDARD 65.00-80.00; UTILITY 60.00-DOWN; BULL CALVES 120.00-155.00.

SHEEP & LAMBS: GOOD 60.00-70.00; UTILITY 50.00-55.00; SLAUGHTER EWES 10.00-20.00; GOATS 30.00-80.00.

SLAUGHTER CATTLE: STEERS, GOOD, 62.00-65.50; STANDARD 58.00-60.00; UTILITY 50.00-52.50.

HEIFERS: GOOD 60.00-65.00; STAN-

DARD 52.00-58.00; UTILITY 45.00-50.00.
COWS: COMMERCIAL 43.00-48.50; UTILITY 40.50-42.00; CANNER & CUTTER 40.00-DOWN.
BULLS: COMM. & GOOD 55.00-64.25; CUTTER & UTILITY 50.00-52.50.
STOCK-FEEDER CATTLE: GOOD 70.00-75.00; MEDIUM 55.00-65.00.
STEER CALVES: GOOD 70.00-82.50; MEDIUM 60.00-67.50.
HEIFER CALVES: GOOD 65.00-78.00; MEDIUM 50.00-60.00.
EGGS: LARGE .50-.70, MEDIUM .45-.65.
NOTE: WE WILL HAVE A TRUCKLOAD OF HAY (10 TONS) TO SEB JAN. 18, AT THE AUCTION AT 11:30 A.M.

Isennock Auction

New Park, PA

January 14, 1992

Report supplied by auction
SLAUGHTER COWS: 50.00 & DOWN.

HEIFER CALVES: 120 LBS. 149.00; 265 LBS. 66.00.

FARM CALVES: 110-120 LBS. 120.00-145.00; 95-105 LBS. 100.00-140.00; 80-90 LBS. 90.00-117.00; WEAK AND ROUGH 70.00 AND DOWN.

HOGS: 220-250 LBS. 40.50-43.00.

FEEDER PIGS: 12.00-15.00 HEAD.

GOATS: 29.00-40.00 HEAD.

A LESSON WELL LEARNED...

LANCASTER FARMING'S CLASSIFIED ADS

GET RESULTS!

Phone: 717-394-3047 or 717-626-1164

KIRKWOOD HAY AUCTION
Hay, Straw and Grain Auction EVERY TUESDAY 12:00

Located Rt. 472 5 miles south of Quarryville or 6 miles north of Oxford corner of Rt. 472 and Noble Road.

Lloyd H. Kreider, Auctioneer AU-000513L
No out of state checks

Concrete Slatted Hog Barns



Concrete slats for Grower, Finisher and Gestation.

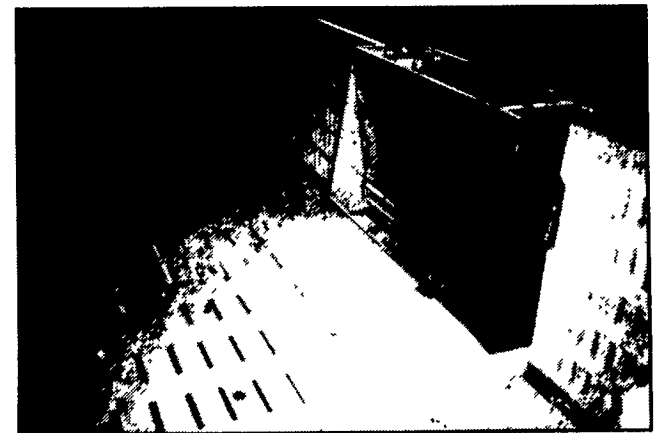
Available in slot sizes: 3/4", 7/8", 1" or 1 1/4" by 4" or 9" long

Concrete Penning Available in Sizes:

2' or 4' long by 30" high by 1 1/2" for weaner pigs.

2' or 4' long by 36" high by 1 1/2" for fat hogs.

2' or 4' long by 42" high by 1 1/2" for gestation pens.



New Style Concrete "Waffle Slats"

"Waffle Slats" can be undercut so it can replace existing steel slatted areas.

Special sizes can be made in increments of 1" on request.



Other Products:

- H&J Bunks • Cattle Slats
- Concrete Posts & Beams • Bunker Silos

Give us a call on hog, beef, dairy and heifer barns

Replace Your Bulbs- Save Electricity
FLUORESCENT LIGHTS

PRICES AS LOW AS \$6.99

NOW \$5.95

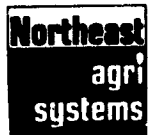


- Save Energy Replaces up to 75 watt incandescent
- Easy Installation
- Economical Lasts 10 times longer than standard bulb
- Fewer Lamp Changes
- Lower Maintenance Cost
- Durable Polycarbonate Housing
- 45 000+ Hour Ballast
- 10 000+ Hour Lamp Life
- Air Cooled
- Water Resistant Ballast
- 120 Volt
- Ratcheted Brass Socket
- Medium Base
- Starting Temperature 0°
- Made in USA

MODEL	WATTS	INCANDESCENT EQUIVALENT	INITIAL LUMENS
3000	5	25 WATTS	250
3200	7	40 WATTS	400
3500	9	60 WATTS	600
3700	13	75 WATTS	900
3900	22	90 WATTS	1300

Call Toll Free 1-800-673-2580

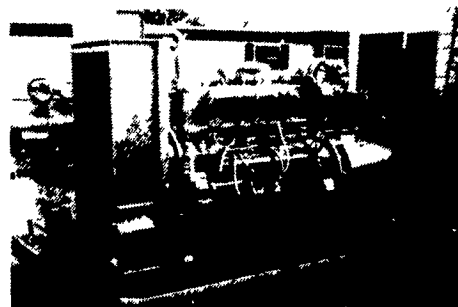
SOLD AND SERVICED BY:



NORTHEAST AGRI SYSTEMS, INC.

FLYWAY BUSINESS PARK
139 A West Airport Rd.
Lutz, PA 17543
(717) 569-2702

MARTIN MACHINERY



GENERATORS

- Sales ★ Service ★ Rentals
- ★ Complete Generator Systems
- ★ PTO ★ Portables ★ 2-1600 KW

"We Service It If You Have It And Sell It If You Need It"

34 W. Mohler Church Rd.
Ephrata, PA 17522

Tel: 717-738-0300
Fax: 717-738-4329



477 East Farmersville Road
New Holland, PA 17557
(717) 355-2361

