

THE OLD FARMER'S ALMANAC

JAN. 13-19, 1992

Cuckoo Dancing Week.

Jan 13, 1916, the dikes of the Zuider Zee collapse, flooding northern Holland
 Jan 14, 1794, at Edom, Virginia, young Dr. Jesse Bennett successfully performs the first caesarean delivery in America on his wife, Elizabeth, thus saving the lives of both mother and child
 Jan 15, 1870, Thomas Nast's cartoon in *Harper's Weekly*, New York City, is the first depicting the Democratic party as a donkey
 Jan 17, 1706, Benjamin Franklin is born at Boston, Mass
 Jan 19, Full Wolf Moon
Constant complaint is the poorest sort of pay for all the comforts we enjoy
 — Benjamin Franklin



Ask the Old Farmer: My grandmother used to show me what she called snow shadows on the rug and proudly announce that it was soon to snow — and by golly, it always did. Have you ever heard of this? H. S. Vt

Yes, indeed! When either the sun or moon is "wallowed" as the old folks said, it was due to snow. It was the wallowing that blurred the shadows.
 Home Hints: Pull window shades down on cold winter nights to reduce heat loss from the house

OLD FARMER'S WEATHER FORECAST

New England: Sunshine and milder weather for the first half of the week, followed by light snowfall and seasonable temperatures as the week ends
Greater New York-New Jersey: Sunny and very warm weather, followed by cloudy skies and seasonable temperatures. This month's average is 36° F, 5° above normal
Middle Atlantic Coastal: Sunny and mild through midweek, then turning colder with light rain. Rain subsides, but cloudy skies and cold temperatures remain
Piedmont & Southeast Coastal: Sunny, clear, and warm this week, though partly cloudy skies roll in for the weekend. This month's average of 46° F is 7° above normal

(All Rights Reserved, Yankee Publishing Incorporated, Dublin, NH 03444)

Lebanon Valley Livestock

Fredericksburg, PA
 Jan. 7, 1992

CATTLE 200... PDA ...Compared with last Tuesday's market: Low to Average Choice 1255/1480 lbs. slaughter steers 66.75-69.75, few Select 63.25-65.25, two Standard 50.50 & 55.50; Few High Choice and Prime 1400/1415 lbs. Holsteins 64.75-66.75, Choice 1105/1720 lbs. 58.50-63.00, few Select 54.00-59.50, few Standard 48.00-56.00. Few Choice 1045/1285 lbs. sl. heifers 63.00-67.75, one YG 5,1610 lbs. 53.25, one Select 64.75, two Utility 44.00 & 49.00. Breaking Utility and Commercial sl. cows 48.00-50.00, few to 50.25, low dressing down to 44.50, Cutter and Boning Utility 44.00-48.75, few to 50.75, Canner & Low Cutter 41.25-44.75, few to 46.25, Shells 34.50-40.50. One Select sl. bullock 57.75, few Utilit and Standard 48.00-54.75. Few Yield Grade No. 1, 1335/1490 lbs. sl. bulls 58.25-61.00,

one YG No.2, 1625 lbs. 59.00.
 CALVES 240...Few Good vealers 70.00-79.00, Standard and Good 80/100 lbs. 65.00-72.00, 65/80 lbs. 40.00-69.00, Utility 50/95 lbs. 35.00-55.00. Farm Calves: Hol. Bulls No. 1, 90/120 lbs. 135.00-160.00, few 170.00, No. 2, 80/115 lbs. 97.00-142.00, few down to 85.00; Few No. 1, Hol. Heifers 85/145 lbs. 80.00-145.00. Few Beef cross 80/100 lbs. bulls and heifers 100.00-140.00.
 HOGS 118...Barrows and gilts: Few US No. 1-3 240/275 lbs. barrows and gilts 35.50-36.50, lot 2-3 250 lbs. 35.25, few 2-4 235/295 lbs. 29.00-33.50, 1-3 165/185 lbs. 24.00-27.75. Sows: US No. 1-3 370/500 lbs. sows 25.00-29.50, one 31.00, 500/575 lbs. 28.00-29.50, Medium 340/500 lbs. 21.00-25.50, one 17.00. Few Boars 23.25-23.50.
 FEEDER PIGS 0...No market test - per head.
 SHEEP 0...No market test. - all Cwt.
 GOATS 0...No market test. - all per head.

Central U.S. Carlot

Beef Report

January 8, 1992

Report supplied by USDA

CENTRAL U.S. CARLOT BEEF REPORT (INCLUDES THE MAJOR PRODUCTION AREAS IN THE MIDWEST AND TEXAS) AS OF 3 P.M. COMPARED TO TUESDAY'S 3 P.M. REPORT: COMPARED TO TUESDAY'S 3 P.M. REPORT: UTILITY CARCASSES STEADY TO 1.50 LOWER; CUTTER AND BULL CARCASSES NOT TESTED. DEMAND AND OFFERINGS MODERATE.

COW & BULL CARCASSES FOB OMAHA BASIS 20 LOADS REPORTED

UT, BRK 2-4, 450 & UP, 4 LOADS, RANGE 78.00, LATEST ESTB. MKT. 78.00.

UT, BNG 1-3, 400 AND UP, 16 LOADS, RANGE 80.00-82.50, LATEST ESTB. MKT. 80.00-81.00.

CUTTER 1-2, 350 & UP, LATEST ESTB. MKT. 91.00 A.

BULLS 500/UP, YG 1, LATEST ESTB. MKT. 103.00 A.

BONELESS PROCESSING BEEF/ BEEF TRIMMINGS

159 LOADS REPORTED
 FRESH 90% BONELESS BEEF 2.00 LOWER IN MIDWEST, BUT IN TEXAS, 4.50-8.00 LOWER THAN LAST TEST; 75% STEADY; 65% STEADY TO 2.00 HIGHER. DEMAND MODERATE FOR MODERATE TO HEAVY OFFERINGS. BEEF TRIMMINGS WEAK ON MODERATE DEMAND AND OFFERINGS.

FOB OMAHA BASIS

90%FR, 21 LOADS, RANGE 122.0-123.0, WT. AVG. 122.29.

90%FZ, UNQUOTED.

85%FR, RANGE 118.0, WT. AVG. 118.00 A.

85%FZ, UNQUOTED.

75%FR, 1 LOAD, RANGE 91.00, WT. AVG. 91.00.

75%FZ, UNQUOTED.

65%FR, 2 LOADS, RANGE 69.0-71.5, WT. AVG. 70.25.

65%FZ, UNQUOTED.

50%FR, 89 LOADS, RANGE 33.00-35.50, WT. AVG. 34.14.

50%FZ, 6 LOADS, RANGE 39.00-40.00, WT. AVG. 39.33.

50%BX, 11 LOADS, RANGE 36.00-37.00, WT. AVG. 36.09.

BULL: 92-94, RANGE 146.00, WT. AVG. 146.00 A.

FOB EAST TEXAS AND OKALHOMA

90%FR, 23 LOADS, RANGE 123.00-123.5, WT. AVG. 123.13.

90%FZ, 6 LOADS, RANGE 125.0-125.50, WT. AVG. 125.33.

85%FR, UNQUOTED.

85%FZ, UNQUOTED.

75%FR, UNQUOTED.

75%FZ, UNQUOTED.

65%FR, UNQUOTED.

65%FZ, UNQUOTED.

BULL: 92-94 UNQUOTED.

CAF NORTHEAST AREAS

90%FR-65% FR, UNQUOTED.

ABCDE AFTER QUOTES REPRESENTS DAYS SINCE LAST ACTUAL MARKET TEST. QUOTES ARE DROPPED AFTER 5 DAYS OF NO TEST OR BEFORE IF THEY NO LONGER REFLECT CURRENT MARKET CONDITIONS.

NOTICE: ALL CLOSING MEAT REPORTS WILL BE ISSUED AT 12:00 NOON ON DECEMBER 31, 1991.

Westminster Livestock Auction

Hagerstown, Md.

Tuesday, January 7, 1992

Report supplied by auction

SLAUGHTER COWS: 86 HEAD, STEADY PRICES. UTILITY 46.00-49.00; LOW DRESSING 44.00-46.00; CANNERS 42.00-46.00; SHELLY 42.00 AND DOWN.

BULLS: YG#2 1100-1900 LBS. 53.00-61.00; LOW DRESSING 50.00-53.00.

FED STEERS: CHOICE 1150-1400 LBS. 65.00-67.00; SELECT TO LOW CHOICE 60.00-65.00; HIGH CHOICE HOLSTEINS 1300-1500 LBS. 61.75-65.75; 2 1600 LBS. 58.75-60.25; HIGH CHOICE 1020-1300 LBS. 64.00-67.00, 1 AT 68.75; FEW 800-950 LBS. 58.00-61.00; SELECT 55.00-60.00.

VEAL CALVES: LOW CHOICE 250-375 LBS. 82.00-92.00; GOOD 170 LBS. AT 103.00; CULLS 85-110 LBS. 55.00-63.00; 50-80 LBS. 45.00-55.00; WEAK/ROUGH 45.00 DOWN.

FARM CALVES: HOLSTEIN BULLS TO 155.00; BULK#1 90-120 LBS. 125.00-148.00; #2 80-110 LBS. 75.00-120.00; HOLSTEIN HEIFERS #1 95-130 LBS. 125.00-156.00; #2 85-95 LBS. 95.00-120.00.

BUTCHER HOGS: 75 HEAD. US#1&3 215-260 LBS. 35.00-36.00; 260-280 LBS. 33.00-36.00; 195-210 LBS. 31.00-34.00; 300-375 LBS. 28.00-32.75.

SOWS: 50 HEAD. 300-500 LBS. 27.00-31.50; 500-700 LBS. 28.00-30.50.

BOARS: 400-650 LBS. 21.00-22.00.

STOCK CATTLE: 93 HEAD. STEERS

300-500 LBS. 73.00-80.00; 500-750 LBS. 68.00-74.00; HOLSTEINS 200-400 LBS. 75.00-85.00; 400-600 LBS. 60.00-70.00. HEIFERS: 300-500 LBS. 65.00-76.00; 2 400 LBS. AT 91.00; 500-700 LBS. 63.00-72.00, FEW TO 76.00; 700-900 LBS. 55.00-66.00.

BULLS: 200-400 LBS. 76.00-93.00; 400-600 LBS. 73.00-80.00.

LAMBS: 85 HEAD, 2.00 HIGHER. HIGH CHOICE TO PRIME 100-120 LBS. 54.00-59.00; FEW 125-150 LBS. 47.00-50.00; CHOICE 85-90 LBS. 56.00-67.00; 60-80 LBS. 67.00-77.00; NEW CROP 40-55 LBS. 95.00-101.00.

SHEEP: 120-250 LBS. 22.00-32.00.

GOATS: LARGE 65.00-95.00; MEDIUM 35.00-60.00; SMALL 30.00-40.00.

PIGS AND SHOATS: 449 HEAD. BY THE HEAD 20-30 LBS. 12.00-19.00; 30-40 LBS. 18.00-23.00; 40-50 LBS. 20.00-27.00; 50-70 LBS. 25.00-32.00; 70-90 LBS. TO 35.00; BY THE POUND, 75-110 LBS. 30.00-36.00; 120-150 LBS. 22.00-32.00.

STOCK BOARS: 170-210 LBS. 21.00-26.50; 215-250 LBS. 28.00-30.00; 1 325 LB. AT 25.00.

PRICES WERE LOWER ON ALL CLASSES OF SWINE, FEEDER PIGS, MARKET HOGS, SOWS AND BOARS.

New Holland Dairy

New Holland Sales Stables

Wednesday, January 8, 1992

Report supplied by auction

DAIRY COW RECEIPTS 63; HEIFERS 115 AND BULLS 12. MARKET STEADY.

FROM PENNSYLVANIA FRESH 1025.00-1550.00, SPRINGERS 1275.00-1300.00.

FROM PERRY COUNTY FRESH 1100.00-1400.00.

FROM NEW YORK STATE FRESH 1250.00-1575.00, SPRINGERS 1200.00-1275.00.

FROM PA FRESH 1250.00-1325.00. LOCALLY CONSIGNED COWS 575.00-1200.00.

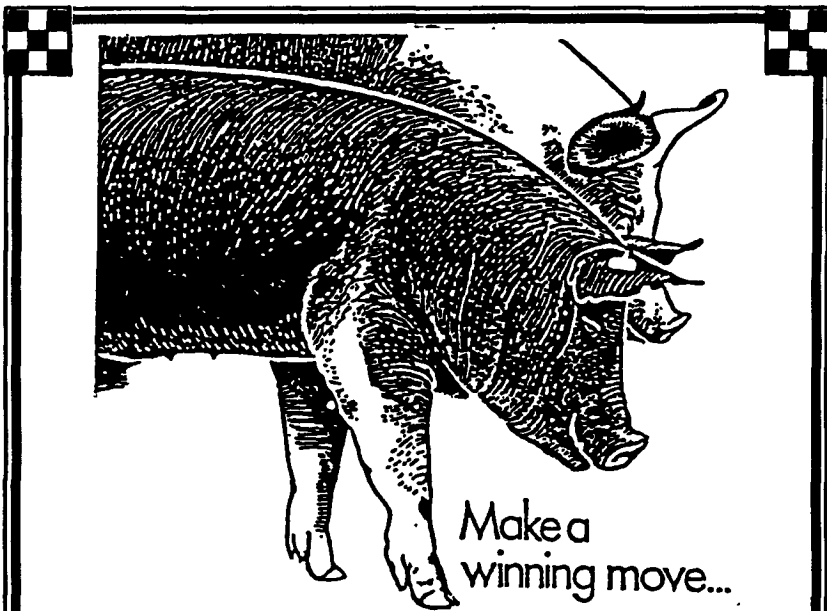
BETTER COWS 1350.00-1525.00. SPRINGING HEIFERS 835.00-1175.00.

PUREBRED HEIFERS 1025.00-1200.00.

SHORTBRED HEIFERS 770.00-910.00.

OPEN BREEDING AGE HEIFERS 580.00-760.00.

SMALL OPEN HEIFERS 300.00-500.00. VACCINATED HEIFERS BRING A PREMIUM. BULLS SOLD 585.00-800.00. PUREBREDS 690.00-975.00.



Make a winning move...

***** Contract with Purina Mills, Inc.**
 Now accepting new and existing sow herds

We Supply

- Quality Purina Feeds
- Sound Genetic Program
- A Service Representative To Assist You
- Competitive Contract Payment

Call Us Today
1-800-873-5300

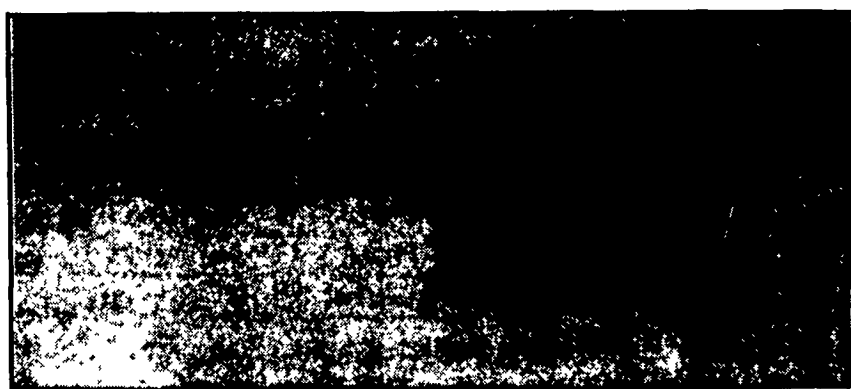
Purina Mills, Inc.
 Serving The Needs
 Of Agriculture

MELHORN SALES SERVICE, TRUCKING CO.

1010 W. MAIN ST., WEST WY, PA 17352

BIOFOGGER

A Revolutionary Way To Disinfect Your Poultry Or Hog Buildings



- Thermal Fogger Using Bioguard X-185
- Cost Effective Method For Disinfecting

Call For Price On Unit Or For Us To Do The Job For You

The only full service company, in this area, to handle the total needs of the poultrymen.



For More Information Phone:
717-653-1102

Monday - Friday 8:30 AM - 4:00 PM