

Dewart Livestock

Dewart, PA
Dec. 23, 1991
MERRY CHRISTMAS AND A HAPPY NEW YEAR!
CATTLE 82...PDA...Compared with last weeks market: Slaughter cows about steady. Individual 1300 lb. Choice sl. steer 66.00, one Select 63.00. Couple Select Holstein sl. heifers 57.75 & 62.25. Few Breaking Utility and Commercial slaughter cows 46.50-48.50, Cutter and Boning Utility 46.50-51.00, couple 54.50, Canner and Low Cutter 39.00-44.50, Shells down to 34.50.

CALVES 169...Standard and Good 70/95 lbs. vealers 60.00-65.00, Utility 50/75 lbs. 45.00-55.00. FARM CALVES: No. 1, 90/130 lbs. Holstein bulls 150.00-177.50, No. 2, 80/120 lbs. 67.50-120.00; few No.1, 90/110 lbs. Holstein heifers 120.00-145.00. Few beef cross 75/150 lbs. bulls and heifers 70.00-130.00.

HOGS 28...BARROWS & GILTS: Small lot 1-3 212 lbs. barrows and gilts 38.00. US 1-3 380/615 lbs. sows 25.75-30.00. Few Boars 22.50-30.00.

FEEDER PIGS 83...Few Lots US No. 1-3 20/40 lbs. feeder pigs 24.00-33.00, lot 75 lbs. 43.00. --- all per head.

SHEEP 3...Two Choice 110 & 120 lb. woolled sl. lambs 45.00 & 50.00. - all cwt. GOATS 0...No market test. - per head.

National Grain Market

St. Joseph, MO
Dec. 24, 1991
CHRISTMAS CONTINUES FOR WHEAT GROWERS BUT CORN, SORGHUM, AND SOYBEANS PRICES LOWER IN HOLIDAY SHORTENED TRADING SESSION TUESDAY. WHEAT STEADY TO 2 CENTS HIGHER. CORN STEADY TO 2 CENTS LOWER. SORGHUM STEADY TO 1 CENT LOWER. SOYBEANS 1 TO 4 CENTS LOWER. ABBREVIATED TRADING SESSION AT BOTH CHICAGO AND KANSAS CITY BOARD OF TRADE. SOME COUNTRY ELEVATORS CLOSED AND PRICE QUOTES NOT AVAILABLE FROM SOME SOURCES.

EXPORT NEWS: SRI LANKA BOUGHT APPROXIMATELY 50,000 TONNES U.S. HARD RED WINTER WHEAT UNDER EXPORT BONUS FOR JANUARY SHIPMENT.

DATE CHANGE YEAR AGO 12/24/91 12/23/91 12/25/90 WHEAT: KANSAS CITY 4.11-4.13 NC HOLIDAY MINNEAPOLIS 4.20 1/4-4.25 1/4 UP 1-2 PORTLAND 4.63-4.64 UP 1-DN ST. LOUIS N/A

CORN, U.S. NO. 2 YELLOW: KANSAS CITY 2.54-2.55 DN 1 MINNEAPOLIS 2.31 DN 3/4 SO. IOWA N/A OMAHA N/A
SOYBEANS, NO. 1 YELLOW: KAN-

SAS CITY 5.68-5.70 DN 4-3 MINNEAPOLIS 5.46 DN 1 3/4 SO. IOWA N/A C. ILL. PROCESSORS 5.71-5.76 DN 2

*KANSAS CITY, US NO. 1 HARD RED WINTER WHEAT, ORDINARY PROTEIN. MINNEAPOLIS, US NO. 1 DARK NORTHERN SPRING WHEAT, 14% PROTEIN. PORTLAND, NO. 1 SOFT WHITE WHEAT, ST. LOUIS, NO. 2 SOFT RED WINTER WHEAT.

FUTURES CLOSE: KANSAS CITY (MAR) WHEAT 3.98 1/2 UP 1 3/4 MINNEAPOLIS (MAR) WHEAT 3.85 1/4 UP 2 CHICAGO (MAR) WHEAT 4.00 3/4 UP 2 1/4 (MAR) CORN 2.54 DN 3/4 (JAN) SOYBEANS 5.62 DN 1 3/4

EXPORT: BARGE OR RAIL, PORT OF NEW ORLEANS OR NORTH TEXAS GULF. NO. 1 HARD RED WINTER WHEAT ORDINARY PROTEIN 4.52-4.53 UP 2-3 NO. 2 SOFT RED WINTER WHEAT 4.41 UP 2 NO. 2 YELLOW CORN 2.76 DN 1 NO. 2 YELLOW SORGHUM RAIL 4.93 DN 1 BARGE 4.91 NC NO. 2 YELLOW SOYBEANS 5.92 DN 4.

Peoria Sheep

Peoria, IL
Dec. 24, 1991
SHEEP: 50 TRADING MODERATE. COMPARED WITH LAST TUESDAY, FEW SALES OF SLAUGHTER LAMBS MOSTLY STEADY. SLAUGHTER LAMBS: FEW CHOICE AND PRIME 115-125 LBS. 47.00-48.00

Regional Hay

December 23, 1991
Eastern, Pa.
HAY & STRAW MARKET FOR EASTERN PA - (ALL HAY NO. 2 AND BETTER, PRICES PAID BY DEALERS AT THE FARM & PER TON). HAY AND STRAW STEADY.

ALFALFA 90.00-115.00; MIXED HAY 80.00-110.00; TIMOTHY HAY 75.00-110.00; STRAW 50.00-85.00; MULCH 20.00-40.00.

SUMMARY OF LANCASTER CO. HAY AUCTIONS FOR WEEK ENDING 12/20/91. PRICES PER TON: LOADS: 237 HAY, 62 STRAW, AND 25 EAR CORN.

ALFALFA 95.00-140.00; MIXED HAY 90.00-140.00; TIMOTHY HAY 100.00-145.00; STRAW 75.00-100.00; EAR CORN 88.00-100.00.

SUMMARY OF CENTRAL PA. HAY AUCTIONS FOR WEEK ENDING 12/20/91. PRICES PER TON: LOADS: 171 HAY, 17 STRAW & 8 EAR CORN.

ALFALFA 90.00-145.00; MIXED HAY 85.00-125.00; TIMOTHY HAY 90.00-126.00; STRAW 95.00-120.00; EAR CORN 95.00-135.00.

North Jersey Livestock

Hackettstown, NJ
Tuesday, December 23, 1991
Report supplied by auction

CALVES .45-1.70.
COWS 36%-56% .
EASY COWS .09-.48.
HEIFERS .42-.62% .
BULLS .56%-65% .
STEEERS .72-.77% .
HOGS .23-.38.
SOWS .21.
ROASTING PIGS 24.00-45.00 EACH.
SHEEP .14-.50.
LAMBS EACH 42.50-77.50.
LAMBS PER LB. .32-.80.
GOATS EACH 61.00-92.50.
KIDS EACH 11.00-72.00.
HIDES EACH 15.00.
TOTAL 908.

Lebanon Valley Livestock

Fredericksburg, PA
MERRY CHRISTMAS AND A HAPPY NEW YEAR!
NO SALE TUESDAY, DECEMBER 24, 1991, DUE TO HOLIDAY!

Belleville Livestock

Belleville, PA
MERRY CHRISTMAS AND A HAPPY NEW YEAR!
NO SALE WEDNESDAY, DECEMBER 25, 1991, DUE TO HOLIDAY!

Leesport Livestock

Leesport, PA
MERRY CHRISTMAS AND A HAPPY NEW YEAR!
NO SALE WEDNESDAY, DECEMBER 25, 1991, DUE TO HOLIDAY!

Belknap Livestock

Dayton, PA
MERRY CHRISTMAS AND A HAPPY NEW YEAR!
NO SALE WEDNESDAY, DECEMBER 25, 1991, DUE TO HOLIDAY!

Keister's Middleburg Auction

Middleburg, PA
MERRY CHRISTMAS AND A HAPPY NEW YEAR!
NO SALE TUESDAY, DECEMBER 24, 1991, DUE TO HOLIDAY!

Vintage Livestock

Paradise, PA
MERRY CHRISTMAS AND A HAPPY NEW YEAR!
NO SALE TUESDAY, DECEMBER 24, 1991, DUE TO HOLIDAY!

Aberdeen Sales Co. Inc.

Livestock Auction Market
Harford County, Md.
Hay - Straw - Grain Sale
Saturday, December 21, 1991
ALFALFA MIXED HAY \$2.80 @ BALE.
TIMOTHY HAY \$2.00 @ BALE.
TIMOTHY MIXED HAY \$2.10 @ BALE.
STRAW \$1.25 @ BALE.
NEXT SALE: DECEMBER 28, 1991, TIME: 11:00 P.M.
NEXT WEDNESDAY SALE WILL BE JANUARY 1, 1992.

Mercer Livestock

Mercer, PA
MERRY CHRISTMAS AND A HAPPY NEW YEAR!
NO SALE TUESDAY, DECEMBER 24, 1991, DUE TO HOLIDAY!

Replace Your Bulbs- Save Electricity
FLUORESCENT LIGHTS

PRICES AS LOW AS \$6.99 NOW \$5.95

- Save Energy-Replaces up to 75 watt incandescent
- Easy Installation
- Economical Lasts 10 times longer than standard bulb
- Fewer Lamp Changes
- Lower Maintenance Cost
- Durable Polycarbonate Housing
- 45 000+ Hour Ballast
- 10 000+ Hour Lamp Life
- Air Cooled
- Water Resistant Ballast
- 120 Volt
- Ratcheted Brass Socket
- Medium Base
- Starting Temperature 0°
- Made in USA

Model	Watts	Equivalent Incandescent	Equivalent Incandescent
3000	5	25 WATTS	250
3200	7	40 WATTS	400
3600	9	60 WATTS	600
3700	13	75 WATTS	900
3800	22	90 WATTS	1300

Call Toll Free 1-800-673-2580
SOLD AND SERVICED BY:
NORTHEAST AGRISYSTEMS, INC.
FLYWAY BUSINESS PARK
139 A West Airport Rd.
Lititz, PA 17543
(717) 569-2702

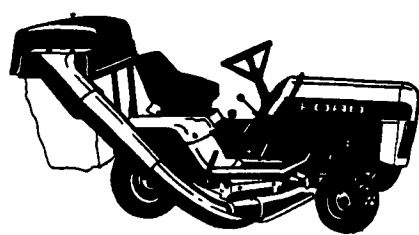


Notice Of Time Change (Hay Sale) Starting Jan. 1, 1992 (New Year's Day)

Hay And Straw Sales Will Start At 10 A.M. Every Wed.

GOOD'S AUCTION
111 North Maple Ave.
Leola, PA 17540
717-656-8911
717-656-9554

QUALITY = FORD NEW HOLLAND FORD NEW HOLLAND = QUALITY



Lawn & Garden



Farm Tractors

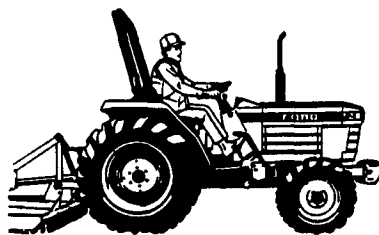


Industrial Tractors

WAIVER INTEREST UNTIL APRIL, 1992

LANCASTER FORD TRACTOR OFFERS...
QUALITY Ford New Holland Equip.
QUALITY Service
QUALITY Parts

FINANCE AS LOW AS 0.0% OR AS LONG AS 5 YEARS



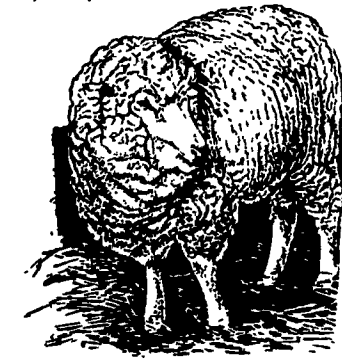
Compact Tractors



Landscape Tractors



Skid Loaders



Protect your farm. Get early warning when a vehicle approaches.

Mier Products
Mier Products Inc.
1719P N Main Street
Kokomo, IN 46901
800-473-0219
FAX 317-457-0847

Stop vandals thieves but greet friends with hidden Drive-Alert™ driveway alarm. Hide it near driveway farm equipment or barn. Easy installation. Call for free information.

HAY, STRAW & GRAIN SALE
Every Thursday at 1 p.m.
Auction will continue all year long
Vintage Sales Stables, Inc.
(Rt. 30, 10 miles east of Lancaster in Paradise, PA)

For info. L. Robert Frame, Sr. president
717-442-4181 business
215-458-8518 home
Glenn S. Frame Mgr.

LANCASTER FORD TRACTOR, INC.
1655 Rohrerstown Rd., Lancaster, PA 17601
(717) 569-7063

Where Service Does Not Stop At A Sales Promise!