

Lancaster Co. Livestock Market Auctions

Lancaster Livestock Auction

Lancaster, Pa.
Monday, December 23, 1991
Cattle Calves Hogs Sheep Goats
 Monday's Auction
 442 109 316 872 296
 Last Monday's Auction
 930 91 187 2660 704
 Last Year's Auction
 456 65 156 803 438

CATTLE: Small supply slaughter steers and heifers mostly steady; cows steady; bullocks scarce; bulls steady. Supply included an estimated 36% slaughter steers, 16% slaughter heifers, 35% cows, and 13% bulls.

SLAUGHTER STEERS: Choice 2-4 1050-1425 lb 67.60-70.10, few 70.10-70.75; couple Choice 2 1050-1200 lb 71.25-72.50; few Choice 3 to mostly 4 1300-1450 lb 62.25-65.50; Select and low Choice 2-3 1050-1375 lb 63.00-66.75; few Select 2-3 1050-1275 lb 61.00-63.25.

HOLSTEINS: Couple Choice 1400-1590 lb 60.00-60.75; one lot Select and Choice 1625 lb 54.75.

SLAUGHTER HEIFERS: Choice 2-3 975-1200 lb 64.50-67.25, couple yield grade 2 1145-1285 lb 67.75-69.75; few Choice 4-5 1445-1480 lb 52.50-55.85; Select 2-3 950-1250 lb 59.50-62.50.

COWS: LO DRESSING BULK HI DRESSING Breaking Utility & Commercial 2-3 46.50-49.50 49.50-50.50 Commercial 3-4 44.00-47.00 Cutter & Boning Utility 1-2 43.00-45.00 45.00-49.00 49.00-50.50 Canner & low Cutter 40.00-42.00 42.00-45.00.

BULLOCKS: Few Choice 2-3 1145-1230 lb 68.00-70.50; couple Select 2 1185-1290 lb 65.75-67.75.

BULLS: Yield grade 1 1350-1900 lb 62.50-67.50, six head 1350-2060 lb 69.25-76.75; Yield grade 2 1050-1500 lb 58.75-62.50.

CALVES: Vealers steady; slaughter calves weak to 5.00 lower. Demand fair for Holstein bulls to return to farm.

VEALERS: Couple Choice 260-300 lb 103.00-111.00; high Good and low Choice 195-280 lb 79.00-86.00, 80-110 lb 50.00-58.00.

SLAUGHTER CALVES: Good and Choice 300-450 lb 59.00-68.00, couple Choice 72.00-76.00.

RETURNED TO FARM: Bulk 90-125 lb Holstein bulls 100.00-140.00.

HOGS: Barrows and gilts 1.00-1.25 higher; sows steady, instances 2.00 higher on 500-650 lb weights.

BARROWS AND GILTS: US 1-2 210-245 lb 42.00-43.00. US 1 215-235 lb 43.00-44.00. US 1-3 210-255 lb 41.50-42.00.

SOWS: US 1-3 300-500 lb 25.00-27.00. 500-650 lb 27.50-29.50.

BOARS: 300-600 lb 22.00, Few 250-300 lb 23.00-26.25

SHEEP: Woolled lambs weak to 3.00 lower; slaughter ewes 2.00-5.00 higher.

WOOLED LAMBS: Choice 85-120 lb 52.00-55.00 few 55.00-60.00, 55-75 lb 58.00-65.00.

Vintage Livestock Auction

Paradise, Pa.
Tuesday, December 24, 1991
MERRY CHRISTMAS AND A HAPPY NEW YEAR!

CATTLE 304...USDA... Supply included 40% slaughter steers and 50% cows ... Compared with Monday's market: Slaughter steers steady, instances .50 higher, Heifers fully steady, Cows steady, instances 1.00 higher on Canner and low Cutter; Bulls and Bullocks not tested Choice 2-3 few 4, 1100/1350 lbs slaughter steers 68.25-70.00, few 70.00-71, Choice #2, 1150/1425 lbs 70.75-72.00, few #4, 1200/1450 lbs. 62.00-66.00, Select and low Choice 2-3, 1100/1425 lbs. 64.50-67.50. Choice 2-3, 1200/1450 lbs. sl. heifers 62.75-68.50. Breaking Utility & Commercial cows 48.00-51.00, Cutter & Boning Utility 1-2, 46.00-49.75, high dressing 50.00-51.00, Canner & Low Cutter 43.00-47.00, low dressing 39.00-42.25.

CALVES 578... Supply included 384 in graded sale of which 93% sold to return to farm ... Vealers steady. One Choice 145 lbs. 95.00, High Good and low Choice 80/110 lbs. 50.00-57.00, Standard and low Good 55/80 lbs. 35.00-52.00. Farm Calves: 15 head Holstein Bulls 120/125 lbs. 137.00, 145 head 110/115 lbs. 150.00-157.00, 30 head 80/95 lbs. 112.00-117.00, 50 head 90/115 lbs. Small frame 96.00-100.00, few 70/85 lbs. 57.00-80.00; bulk Hol. Heifers 90/115 lbs. 110.00-120.00, lot 20 head 80/85 lbs. 130.00.

SHEEP 0...No market test. - all per cwt.
GOATS 1...No market test. - all per head.

New York Eggs

Dec. 24, 1991

Prices were lower. Trade sentiment was unsettled, but mostly cautiously steady. Cartoned egg demand was good as last minute holiday buying continued. Supplies were adequate to instances close where grading time was the limiting factor.

The New Jersey inventory was 34% below last Monday's level, and the New York inventory was 11% below last week.

PRICES TO RETAILERS, SALES TO VOLUME BUYERS, USDA GRADE A AND GRADE A, WHITE EGGS IN CARTONS, DELIVERED STORE DOOR, CENTS PER DOZEN.

RANGE EXTRA LARGE 79-81 LARGE 76-79 MEDIUM 64-67

NEW CROP LAMBS: Choice 25-45 lb 100.00-130.00.

SLAUGHTER EWES: Utility and Good 22.00-35.00; Yearlings and two-year olds 35.00-40.00.

GOATS: All goats sold by the head. Large Billies 75.00-100.00, few 100.00-130.00. Large Nannies 50.00-60.00, few 60.00-70.00. Medium 45.00-55.00, few Thin 35.00-45.00. Small, mainly kids, 35.00-45.00, few Thin 25.00-35.00.

Some markets not available due to the holiday

Lancaster Livestock Auction

Wednesday's market report has been discontinued until further notice because of insubstantial receipts.

Penns Valley Livestock Market, Inc.

Auction every

Tues. 7 p.m.

Centre Hall, Pa.

Report supplied by Auction

Mon., Dec. 23, 1991

RETURN TO FARM CALF 120.00-165.00

GOOD VEAL: 70.00-119.00.

COMMON VEAL: 40.00-69.00.

SELECT STEERS: 55.00-61.00.

COMMON STEERS: 49.00-54.00.

COMMERCIAL COWS: 45.00-49.00.

CANNERS-CUTTERS: 42.00-48.00.

SHELLS: 25.00-41.00.

COMMON FEEDERS: 37.00-60.00.

BULLS: 45.00-53.00.

Jersey Shore Livestock Market, Inc.

Auction every Thursday

at 4:00 p.m.

Jersey Shore, Pa.

Report supplied by Auction

Thursday, Dec. 26, 1991

RETURN TO FARM CALF 1.20-1.84

GOOD VEAL: 70.00-119.00.

COMMON VEAL: 30.00-69.00.

CHOICE STEERS: 65.00-71.00.

SELECT STEERS: 62.00-66.00.

COMMON STEERS: 53.00-61.00.

COMMERCIAL COWS: 46.00-50.00.

FEW TO 54.00

CANNERS-CUTTERS: 42.00-49.00.

SHELLS: 30.75-41.00.

CHOICE HEIFERS: 63.00-68.00

SELECT HEIFERS: 59.00-62.00

COMMON HEIFERS: 53.00-58.00

GOOD FEEDERS: 65.00-84.00

COMMON FEEDERS: 44.00-64.00

BULLS: 44.00-66.00.

GOOD HOGS: 36.00-38.35.

New Holland Livestock

Dec. 26, 1991

Cattle Calves Sheep Goats

Today 754 711 27 160

Last Thursday 919 655 306 365

Last Year 1070 1321 35 29

CATTLE: Slaughter steers mainly 1.00 higher; small supply slaughter heifers steady; cows firm to 1.00 higher; bullocks not tested; bulls steady. Supply included 30% slaughter steers and 60% cows.

SLAUGHTER STEERS: Choice 2-4 1050-1425 lb 68.50-70.50, few 70.50-71.75; few Choice and Prime 2-3 1175-1375 lb 71.75-72.50; Choice 3 to mostly 4 1425-1550 lb 64.00-67.75, few 1550-1650 lb 58.50-62.50; Select and low Choice 2-3 1100-1450 lb 64.75-68.50; few Select 2-3 1100-1325 lb 60.50-64.00.

HOLSTEINS: Select and Choice 1300-1675 lb 58.75-60.75.

SLAUGHTER HEIFERS: Choice 2-3 1000-1275 lb 64.00-68.50; few Select 2-3 835-1340 lb 59.25-62.00.

COWS: LO DRESSING BULK HI DRESSING Breaking Utility & Commercial 2-3 47.00-50.25 50.50-52.00. Cutter & Boning Utility 1-2 43.75-45.50 45.50-50.25 50.50-51.75. Canner and low Cutter 40.00-43.00 43.00-46.00.

BULLS: Yield grade 1 1375-2180 lb 62.75-65.25; Yield grade 2 1150-1700 lb 58.50-61.75.

CALVES: Vealers steady, although Choice and Prime scarce. Demand good for Holstein bulls and heifers to return to farm.

VEALERS: Couple high Choice and Prime 260-310 lb 116.00-117.00; couple Choice 155-270 lb 96.00-108.00; high Good and low Choice 225-445 lb 67.00-86.00, 80-110 lb 50.00-56.00, few 56.00-63.00; Standard and low Good 55-80 lb 40.00-50.00.

RETURNED TO FARM: Bulk 95-125 lb Holstein Bulls 135.00-165.00, few 165.00-172.00; small frame 95-115 lb 95.00-135.00, 80-95 lb 80.00-105.00; bulk 95-120 lb Holstein Heifers 130.00-170.00, 80-90 lb 100.00-130.00.

SHEEP: Woolled lambs steady; slaughter ewes not tested.

WOOLED: Choice 65-95 lb 58.00-67.00; few Choice 50-65 lb New Crop Lambs 78.00-90.00, couple 45-55 lb 102.00-115.00.

GOATS: All goats sold by the head. Large 70.00-94.00, couple 120.00-127.00; Medium 48.00-68.00; few Small 38.00-48.00.

Lancaster County Weekly

Dec. 27, 1991

CATTLE CALVES

THIS WEEK 1700 1410
 LAST WEEK 2934 1613
 LAST YEAR 1560 1391

CATTLE: Slaughter steers mostly 1.00 higher; slaughter heifers steady; cows 1.00-1.50 higher; bullocks scarce; bulls steady. Supply included 30% slaughter steers, 9% slaughter heifers, 46% cows, 5% bulls, with the balance feeders.

SLAUGHTER STEERS: Choice 2-4 1050-1425 lb 68.25-70.50, few 70.50-71.75; Choice and Prime 2-3 1150-1425 lb 71.50-72.50; Choice 3 to mostly 4 1300-1550 lb 64.00-67.75, few 4-5 1550-1650 lb 58.50-62.50; Select and low Choice 2-3 1050-1425 lb 63.50-68.50; few Select 2-3 1050-1325 lb 60.50-64.00.

HOLSTEINS: Few Choice 1350-1590 lb 60.00-60.75; Select and Choice 1400-1675 lb 54.75-60.00.

SLAUGHTER HEIFERS: Choice 2-3 975-1450 lb 64.00-68.50, couple yield grade 2 1145-1285 lb 68.50-69.75; few Choice 4-5 1445-1480 lb 52.50-55.85; Select 2-3 835-1340 lb 59.25-62.50.

COWS: LOW DRESSING BULK HIGH DRESSING Breaking Utility & Commercial 2-3 47.00-50.50 50.50-52.00. Commercial 3-4 44.00-47.50 Cutter and Boning Utility 1-2 43.00-45.50 45.50-50.25 50.50-51.75. Canner and low Cutter 39.00-43.00 43.00-47.00.

BULLOCKS: Few Choice 2-3 1145-1230 lb 68.00-70.50; couple Select 2 1185-1290 lb 65.75-67.75.

BULLS: Yield grade 1 1350-2180 lb 62.50-67.50, six head 1350-2060 lb 69.25-76.75; Yield grade 2 1050-1700 lb 58.50-62.50.

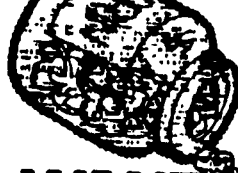
CALVES: Vealers steady, although Choice and Prime scarce; slaughter calves weak to 5.00 lower. Demand good for Holstein bulls and heifers to return to farm.

VEALERS: Couple High Choice and Prime 260-310 lb 116.00-117.00; few Choice 155-300 lb 95.00-111.00; high Good and low Choice 195-445 lb 67.00-86.00, 80-110 lb 50.00-58.00 few 58.00-63.00; Standard and low Good 55-80 lb 37.00-52.00.

SLAUGHTER CALVES: Good and Choice 300-450 lb 59.00-68.00, couple Choice 72.00-76.00.

RETURNED TO FARM: Bulk 95-125 lb Holstein bulls 135.00-165.00, few 165.00-172.00, 85-95 lb 110.00-130.00, small frame 90-115 lb 95.00-135.00, 80-95 lb 80.00-105.00. Bulk 95-120 lb Holstein heifers 120.00-170.00, 80-90 lb 100.00-130.00.

HELP FOR A BUDGET HEADACHE



IN THE WANT ADS

LEBANON VALLEY LIVESTOCK MARKET, INC.

1 mile East of Fredericksburg along Rt. 22
PHONE JONESTOWN 865-2881

Flea Market Auction every Tuesday at 12:30. Tools, Eggs, Produce, etc.

Buyers & Sellers Welcome

B&R CATTLE CO.

RD 1, Marietta, PA 17547
 Office Phone: (717) 653-8164
 Specializing In Stockers & Feeders

JOHN BOWMAN

Ph (717) 653-5728

RON RANCK

Ph (717) 656-9849



Open 24 hours a day

365 days a year

(717)394-2611

AUCTIONS

MONDAY

9:00 A.M. - Slaughter Bulls, Heifers, Steers, Cows

10:00 A.M. - Goats, Veal Calves, Lambs

12 Noon - Slaughter-Hogs

WEDNESDAY

8:00 A.M. - Slaughter Hogs

10:00 A.M. - Slaughter Bulls, Heifers, Steers, Cows

11:00 A.M. - Veal Calves, Lambs

FRIDAY

11:00 A.M. - Stocker and Feeder Cattle

SATURDAY

8:00 A.M. - Slaughter Hogs

Next Feeder Cattle Sale Friday, Jan. 3 - 11:00 A.M.

HOLIDAY SCHEDULE

Closed New Year's Day, Jan. 1

LANCASTER STOCKYARDS, INC.

1147 Lutz Pike, Lancaster, Pennsylvania 17601

Serving The Community For 96 Years

VINTAGE SALES STABLES, INC.

SPECIAL HOURS FOR HOLIDAYS

We will be open Tues., Dec. 24 and

Tues., Dec. 31.

START 9 A.M. GATES CLOSE 2:30 P.M.

L. ROBERT FRAME, SR., PRESIDENT

BUS (717) 442-4181

BUS (717) 768-8204

HOME (215) 458-8518

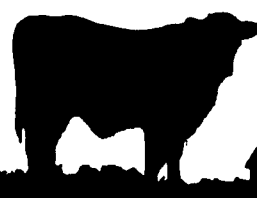
IRWIN MARTIN, FIELD REP.

(717) 733-7434

KENNETH E. HERSHEY, FIELD REP.

(717) 442-4874

TRUCKING SERVICE AVAILABLE - LOCAL & LONG DISTANCE (RT. 30, 10 MILES EAST OF LANCASTER IN PARADISE, PA)



HAY, STRAW & CORN

— SALE —

Please Note New Sale Time! Starting Jan