

Cent. & S.E. Va.

**RICHMOND VA
DEC. 19, 1991**

CENTRAL & SOUTHEAST VIRGINIA LIVESTOCK SUMMARY BLACKSTONE-SOUTHSIDE-SMITHFIELD, VA. ON DEC. 18, 1991 ALL TRENDS COMPARED TO LAST WEDNESDAY

SLAUGHTER HOGS 175 HEAD - SLAUGHTER SOWS 50-75 CENT HIGHER. BOARS 25-75 CENT HIGHER. SOWS US 1-3 300-500 LBS 27.00-28.60 1-3 500 LBS & OVER 29.70-29.80 BOARS 25.00-25.75; SLAUGHTER CATTLE 60 HEAD - NO TRENDS REPORTED.

SLAUGHTER COWS 55 HEAD CUTTER & BNG.UT 1-3 45.00-47.50 BRKG.UT & COMM. 2-4 43.00-50.00 SLAUGHTER BULLS 5 HEAD - 1-2 900-1300 LBS 55.00 1-2 1600 LBS & OVER 63.50

FEEDER CATTLE 110 HEAD - NO TRENDS REPORTED. STEERS; MEDIUM 1 LARGE 1 SMALL 1 MED.&LARGE 2 400-500 86.00 --- 78.00 500-600 --- 76.50 --- HOLSTEIN STEERS; MED.&LARGE 1-2 700-900 LBS 58.50

HEIFERS; MEDIUM 1 LARGE 1 SMALL 1 MED.&LARGE 2 300-400 --- 60.00-65.00 --- 400-500 68.00-73.50 68.00-73.50 55.00-64.50 58.50-65.00 500-600 67.00-71.00 67.00-71.00 57.50 62.00-66.00 FEEDER BULLS; MED. 1 LARGE 1 SMALL 1 MED.&LARGE 2 300-400 LBS --- 74.00 72.00 400-500 LBS 76.00-80.00 76.00-80.00 --- 70.00-73.00 500-600 LBS 64.50-72.50 64.50-72.50 --- 64.00 COWS WITH CALVES AT SIDE 3 PAIR; M-2, 4-8 YRS OLD 750-950 LBS WITH CALVES 80-120 LBS \$500.00-700.00 PER PAIR. BABY CALVES RETURNED TO FARMS 24 HEAD NEWBORN TO 4 WK OLD \$70.00-130.00 PER HEAD. OVER 100 LBS \$110.00-150.00 PER CWT.

**North Va.
RICHMOND VA
DEC. 19, 1991**

NORTHERN VIRGINIA LIVESTOCK SUMMARY ORANGE VIRGINIA ON DEC. 18, 1991 ALL TRENDS COMPARED TO LAST WEDNESDAY

SLAUGHTER CATTLE 126 HEAD - NO TRENDS REPORTED. SLAUGHTER COWS 120 HEAD CUTTER & BNG.UT. 1-3 44.00-47.50 BRKG.UT. & COMM. 2-4 40.00-46.00 CANNER & LOW CUTTER 1-2 37.00-43.00

SLAUGHTER BULLS 7 HEAD - 1-2 1300-1600 LBS 54.00-60.00 1-2 1600 LBS & OVER 60.00

FEEDER CATTLE 190 HEAD - NO TRENDS REPORTED. STEERS; MEDIUM 1 LARGE 1 300-400 82.00-87.00 82.00-87.00 400-500

80.00-88.00 80.00-88.00 500-600 78.00-84.00 78.00-84.00

HEIFERS; MEDIUM 1 LARGE 1 300-400 67.00-76.00 67.00-76.00 400-500 67.00-73.00 67.00-73.00 500-600 65.00-72.00 65.00-72.00 600-700 62.00-66.00 62.00-66.00

FEEDER BULLS; MEDIUM 1 LARGE 1 300-400 LBS 78.00-86.00 78.00-86.00 400-500 LBS 78.00-88.00 78.00-88.00 500-600 LBS 75.00-80.00 75.00-80.00 600-700 LBS 68.00-71.00 68.00-71.00

THIS REPORT WILL NOT BE ISSUED NEXT WEEK DUE TO CHRISTMAS HOLIDAYS. THE OFFICE WILL BE CLOSED DEC. 25, 26, & 27, 1991.

MERRY CHRISTMAS AND HAPPY NEW YEAR FROM MARKET NEWS

**Westminster
Livestock Auction**

Hagerstown, Md.

Tuesday, December 17, 1991

Report supplied by auction

SLAUGHTER COWS: UTILITY 46.00-49.00; HIGH DRESSING TO 50.75; CANNERS 43.00-46.00; SHELLY 42.00 AND DOWN.

BULLS: YG#1 1970 LBS. @ 64.50; YG #2 1200-2100 LBS. 54.00-59.75.

FED STEERS: FEW CH. 1200-1350 LBS. 66.00-68.50; SELECT 62.00-66.00; STANDARD 55.00-61.00; 1 CH. HOL. 1310 LBS. @ 61.00; STANDARD 53.00-56.00.

FED HEIFERS: FEW LW. CH. 1100 LBS. 62.00-64.00; SEL. 900-1100 LBS. 56.00-60.00.

VEAL CALVES: LW. CHOICE 73.00-86.00; 1 PRIME 360 LBS. @ 113.00; GOOD 58.00-70.00; CULLS 85-120 LBS. 55.00-63.00; 50-80 LBS. 45.00-55.00; WEAK/ROUGH 45.00 AND DOWN.

FARM CALVES: HOLSTEIN BULLS #1 90-120 LBS. 125.00-145.00; #2 100.00-120.00; #2 80-95 LBS. 75.00-100.00. HOLSTEIN HEIFERS FEW OVER 100 LBS. TO 137.00; BEEF X BULLS & HEIFERS 80-105 LBS. TO 120.00.

BUTCHER HOGS: US #1&3 215-260 LBS. 38.00-39.50, FEW 40.00-41.50; 260-280 LBS. 35.00-37.00; 280-325 LBS. 28.00-32.00, FEW 33.00-35.50.

SOWS: 300-500 LBS. 26.00-29.00, FEW TO 32.50; 500-700 LBS. 28.00-30.50. BOARS: 23.00-24.00.

STOCK CATTLE: 155 HD. STEERS: 200-400 LBS. 70.00-80.00; 400-600 LBS. 70.00-76.00; 600-800 LBS. 65.00-72.00; 800-950 LBS. 63.00-70.00; 950-1050 LBS. 56.00-66.00.

HEIFERS: 300-500 LBS. 64.00-70.00,

FEW 74.00-78.00; 500-700 LBS. 60.00-72.00; 700-900 LBS. 54.00-63.00. BULLS: 300-500 LBS. 70.00-79.00; 500-700 LBS. 60.00-71.00; 700-800 LBS. 60.00-63.00; 900-1000 LBS. 53.00-58.00. LAMBS: CHOICE 100-120 LBS. 49.00-56.50; 80-100 LBS. 53.00-59.00; FEW 50 LBS. TO 89.00; GOOD 80-120 LBS. 43.00-50.00. SHEEP: 18.00-23.00; OVER 200 LBS. 16.00-20.00. GOATS: LARGE 60.00-70.00; MEDIUM 45.00-62.00; FEW SMALL 30.00-41.00. PIGS & SHOATS: BY THE HEAD: 15-25 LBS. 18.00-29.00; 30-50 LBS. 25.00-34.00; 50-70 LBS. 28.00-41.00. BY THE LB. MAINLY CULLS 60-90 LBS. 40.00-45.00; 100-150 LBS. 30.00-44.00. STOCK BOARS: 210-250 LBS. 30.00-34.50; 260-325 LBS. TO 33.00.

LAMBS: TREND. BLUE O HIGH CHOICE & PRIME 48.00; RED O CHOICE 45.00; FEEDER LAMBS CHOICE 45.75-49.25; SLAUGHTER EWES 12.00-23.00. HOGS: US NO. 1-3 200-240 LBS. 38.50 300-500 LB. 35.00-40.00; SOWS 1-3 32.50-35.00; BOARS 25.00. SLAUGHTER CALVES: 250-500 LBS. GOOD & CHOICE 60.00-72.50.

**Four States
Livestock**

Hagerstown, Md.

Wednesday, December 18, 1991

Report supplied by Auction

SLAUGHTER COWS: 111 HEAD, \$1.00 LOWER. UTILITY 45.00-48.00; HIGH DRESSING TO 49.75; CANNERS 42.00-46.00; SHELLY 42.00-DOWN.

BULLS: YG#1 1400-1800 LBS. TO 64.25; YG#2 53.00-60.00.

FED STEERS: SEL-L CH. 63.00-66.00; CH. HOL. 1400-1600 LBS. 60.00-63.25; SELECT 57.00-59.00.

FED HEIFERS: SEL-L CH. HOL. 54.00-59.00.

VEAL CALVES: CH. 150-250 LBS. 85.00-97.00; GOOD 70.00-85.00; CULLS \$5-8 LOWER 80-100 LBS. 55.00-65.00; 50-80 LBS. 40.00-55.00; WEAK/ROUGH 40.00-DOWN.

FARM CALVES: HOLSTEIN BULLS \$10 LOWER. #1 90-120 LBS. 125.00-146.00, FEW 80-85 LBS. 62.00-75.00. HOLSTEIN HEIFERS FEW 100 LBS. TO 117.00; BEEF X BULLS 100 LBS. TO 105.00.

BUTCHER HOGS: \$1-2 LOWER. US#1&3 215-260 LBS. 37.00-38.50; 1 LOT 280 LBS. TO 35.00; 300-325 LBS. 31.00-36.00.

SOWS \$3-4 LOWER. 400-500 LBS. TO 28.75; 500-700 LBS. 29.00-30.25. BOARS 600 LBS. TO 23.00.

STOCK CATTLE: 238 HD. STEERS: FEW LIGHT WTS. OFFERED. 400-600 LBS. 68.00-80.00; 600-800 LBS. 66.00-73.00; 800-950 LBS. 62.00-68.50. HEIFERS: 300-600 LBS. 62.00-72.00

FEW TO 77.00; 600-700 LBS. 60.00-72.00; 700-900 LBS. 55.00-68.00. BULLS: 300-500 LBS. 68.00-83.00; 500-700 LBS. 63.00-73.00.

DAIRY REPLACEMENTS: 24 HD. FANCY FRESH OR SPRINGING 900.00-1100.00; MEDIUM 600.00-900.00; HOL. BULL 905 LBS. @ 825.00; R&W HOL. 1335 LBS. @ 750.00; HOL. HEIFERS BY THE LBS. 200-400 LBS. 67.00-84.00.

LAMBS: 75 HD. CHOICE 100-120 LBS. 50.00-54.50; 80-100 LBS. TO 56.00; 60-80 LBS. 59.00-68.00.

SHEEP: HEAVY TO 24.00.

PIGS & SHOATS: 179 HD. BY THE HEAD 15-30 LBS. 17.00-27.00; 30-55 LBS. 23.00-33.00.

STOCK BOARS: 220-280 LBS. 32.00-35.00.

NEXT WEEK'S SALE WILL BE THURSDAY, DEC. 26, 6 P.M. MERRY CHRISTMAS!

Isenock Auction

New Park, PA

December 16, 1991

Report supplied by auction

SLAUGHTER COWS: 50.00 & DOWN.

HEIFERS: 855-925 LBS. 59.00-63.50. STEERS - HOLSTEINS: 760-805 LBS. 59.50-61.00.

FARM CALVES: 130-145 LBS. 100.00-139.00; 110-125 LBS. 120.00-172.00; 95-105 LBS. 105.00-151.00; 85-90 LBS. 92.00-124.00. WEAK & ROUGH 70.00 & DOWN.

SOWS: 575 LBS. 28.00. FEEDER PIGS: 26.00-27.00 HD.

HOGS: 180-225 LBS. 38.00. GOATS: 48.00-55.00 HD.

SHEEP: 18.00-26.00 LB.; LAMBS 55 LBS. 90.00.

**Shenandoah
Valley
Livestock**

Harrisonburg, Va.

December 14, 1991

Report supplied by auction

STEERS: M&L-1 300-500 LBS. 86.00-101.00; M&L-2 80.00-92.50; M&L-1 500-700 LBS. 74.00-88.00; M&L-2 71.50-79.50; M&L-1 700-1000 LBS. 69.00-78.00; M&L-2 65.00-72.50; M&L-1 HOLSTEIN 300-1000 LBS. 62.00-72.00.

FEEDER BULLS: M&L-1 300-500 LBS. 78.50-94.50; M&L-2 75.00-82.50; M&L-1 300-500 LBS. 64.00-77.50; M&L-1 700-800 LBS. 60.00-66.50.

HEIFERS: M&L-1 300-500 LBS. 70.00-80.50; M&L-2 65.00-75.50; M&L-1 500-700 LBS. 62.00-71.00; M&L-2 60.00-64.25; M&L-1 700-1000 LBS. 60.00-67.50.

STOCK COWS: BABY CALVES: BH 50-100-165 WT./100 .85 1.40.

SLAUGHTER COWS TREND: UTILITY & COMMERCIAL 2-4 42.50-47.00; CANNER & CUTTERS 1-3 38.00-42.75; SLAUGHTER BULLS: 1&2 51.25-58.00.

Seasons Greetings to all our customers and friends

Thank you for your patronage in 1991. Look forward to serving you in 1992.

Merry Christmas and Happy New Year

Jim and Gary

**Vance Livestock Trucking
Strasburg, VA 22657**



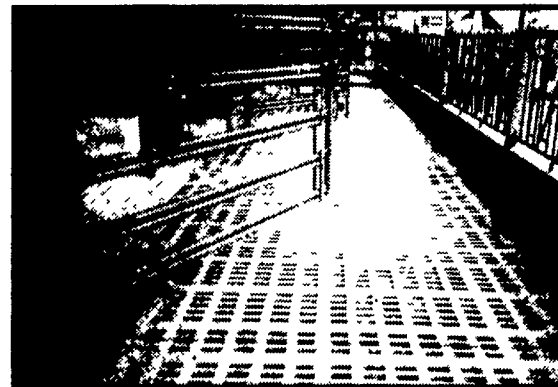
- Market Hogs
- Sows
- Boars
- Pigs



NOW RECEIVING:
Mon. 6:30-11 a.m.
Sat. 6:30-10 a.m.

Rt. 897 - 1 mile North of Fivepointville
(215) 445-5776 • FAX (215) 445-6099

Concrete Slatted Heifer Barns



The concrete slat with your animals comfort in mind. A large percentage of openings keep animals clean and dry.

Other Products:

- H & J Bunks
- Hog & Cattle Slats
- Bunker Silos
- Concrete Hog Penning
- Concrete Post & Beam

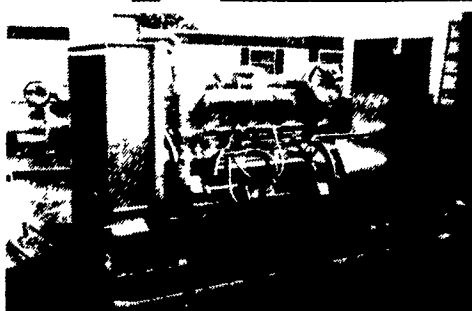
Give us a call for more information on hog, beef, dairy and heifer barns.



477 East Farmersville Road
New Holland, PA 17057
(717) 355-2861



Lancaster and Chester County Swine Producers Association
34th ANNUAL BANQUET
January 23, 1992 6:30 PM
At
YODER'S RESTAURANT, NEW HOLLAND, PA
Call Ed Prosser (717) 367-2368 or Jim Ranck (215) 593-2836 For Tickets
- \$13 Each. Reservation Deadline, January 4th



GENERATORS

Sales ★ Service ★ Rentals
★ Complete Generator Systems
★ PTO ★ Portables ★ 2-1600 KW
"We Service It If You Have It And Sell It If You Need It"

34 W. Mohler Church Rd.
Ephrata, PA 17522

Tel: 717-738-0300
Fax: 717-738-4329