

BUY, SELL, TRADE OR RENT THROUGH THE
CLASSIFIED ADS
 PHONE: 717-626-1164 or 717-394-3047

35 TRUCKS & TRAILERS

For Sale: 1985 GMC, forward 6 cyl. Isuzu diesel, 22' van box, good condition. 717-539-8721.

'89 Ford Diesel 4x4 F-350 Lariat, crew cab 717/548-3726.

YES!! ENGLE FORD DOES MAKE IT EASIER!!

Over 100 New & Used Trucks, Vans & 4x4's
 1990 F250 4x4, HD, 7.3L Diesel, 5 Speed
 1990 F250 4x4, XLT, V-8, AT, A/C, Windows & Locks
 1989 F250 4x4 Super Cab, Diesel, Automatic, A/C, Loaded
 1990 F150 4x4, XLT, A/C, 49L, AT
 1987 F350 Dump, 6.9 Diesel 4 Speed
 1982 F350 Chassis Cab, V8, 4 Spd, 137" WB
 1989 F250 AC, 5 Speed
 1986 F250 XLT, AC, 4 Speed
 1986 Chevy Beauville Window Van, 5 passenger, 6 cyl., automatic, 16,000 mi

ENGLE FORD, INC.
 Rt. 147 North
 Millersburg, PA 17061
 The Call's On Us 1-800-242-8075
 1-717-692-4841

- 1989 Chevy Beretta GT, V6, AT, Loaded, 40,000 Mi.\$7,900
- 1988 Ford Aerostar XLT, 7 Pass., V6, AT, Loaded, 58,000 Mi.\$7,900
- 1988 Dodge Daytona Shelby 2 Turbo, 4 Cyl., 5 Spd., Loaded, 52,000 Mi.\$5,900
- 1988 Mercury Topaz GS 4 Dr., 4 Cyl., AT, AC, Tilt, AM-FM Cass., 62,000 Mi.\$3,900
- 1988 Ford Escort GL 4 Dr., 4 Cyl., AT, AM-FM, 38,000 Mi.\$3,900
- 1987 Ford Thunderbird Turbo Cp., 4 Cyl., 5 Spd., Loaded, 57,000 Mi.\$6,900
- 1987 GMC Sierra 3500 Tk. 4x4 9000 GVW, 350 V8, 4 Spd., AM-FM Cass., 44,000 Mi.\$8,900
- 1983 Honda Accord 4 Dr., 4 Cyl., AT, AC, CR, AM-FM Cass., 109,000 Mi.\$3,800
- 1983 GMC Vandura 2500 Panel Van, V8, AT, 118,000 Mi.\$1,900
- 1977 GMC 6000 Box Tk., V8, 5 Spd. 67,000 Mi.\$1,900
- 1975 Chevy Cheyenne Box Tk., 366 V8, 5 Spd., 83,000 Mi.\$2,800

Brubaker's Auto Sales
 Myerstown, PA
 717-866-5237

'89 Ford F250 XLT Lariat Super Cab, 460 EFL., 5 spd., PS, PB, PW, PDL, trailer towing package, cruise, tilt, air, AM-FM cass. stereo, 8,800 GVW, charcoal & silver w/ matching high rise fiberglass topper, Michelin radials, 26,000 miles, like new, \$13,500. 717-733-2873

'89 GMC Vandura 3500 Cargo Van, 350 Fl., auto., PB, PS, AM-FM, 8,600 GVW, 25,000 miles, white, like new, \$8,975. 717-733-2873

9-ton tri-axle trailer, beaver-tail, ramps, blasted, painted, new floor and lights. (717)437-3568 eve., keep trying.

(800) 533-3837

YOUR DIRECT LINE TO GENUINE GM PARTS
 When you call the number listed above you'll reach our wholesale parts specialists, who can help you keep your GM repair work moving quickly. Ask About:

- Specializing in GM Medium Duty Trucks, Current and Obsolete.
- \$500,000 Parts Inventory
- Parts Locator For Those Hard To Find Items
- We Ship Anywhere. Local Delivery Available.
- Experienced, Knowledgeable Personnel.

LEFEVER BROS.
 DILLSBURG

(717) 432-9697

Quality Dealer Since 1921
 406 U.S Route 15 • Dillsburg, PA 17019



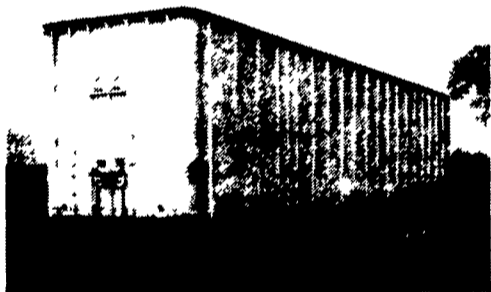
Mr. Goodwrench

KEENS SERVICES INC.

Trailers

- Sales
- Service
- Rentals
- Leasing

Lititz, PA
 (717) 626-5420
 "Since 1963"



Storage Trailers - Clean, Dry, Secure
 ★ RENT FOR \$75/Mo. (On Site Storage)
 ★ BUY FOR \$1,400



Refrigerated Boxes w/ThermoKing Units
 ★ RENT FOR \$600/Mo. (On Site Storage)
 ★ BUY FOR \$4,750

VANS

- (3) 1978-1979 Drop Decks 45'x13'6" Side Doors, 8.25Rx15 \$3,950 Ea.
- 1980 Budd Drop Deck 48x13'6" Side Door
- 1980 Budd 45'x13'6" Rollup Door, Lo Pro 24.5R \$3,450
- 1977 Trailmobile 45'x13' Insulated Potato Trailer \$2,950
- 1980 Trailmobile, 45'x13', Insulated

FLATS

- 1987 Trailmobile 48'x96" Slider, 11R 22.5 On Disk
- 1984 Vulcan 48'x96" Slider, 11R22.5 On Spoke \$6,950
- 1985 Utility 45'x102" Slider, Winches, New Paint
- 1977 Hobbs 42' 10x20
- 1973 Fruehauf 40' 10x20 \$950
- 1978 General 42" Drop Deck

CALL US TODAY!

SELECTION • SAVINGS • SATISFACTION
 AT PENNSYLVANIA'S
FASTEST GROWING TRUCK STORE

OVER 100 FORD TRUCKS AVAILABLE!!



4x4's • F-250's CREW CABS • GAS & DIESEL CHASSIS CABS

HALDEMAN FORD KNOWS TRUCKS!

ASK FOR: Brian McCulley, Bruce Heffner, Ken Mull, Clarence Althouse, Joe Andre, Terry Snyder, Mick Randisi



1991 ECONOLINE 150 CARGO VAN

4.9L EFI 6 Cylinder, Electronic Automatic Overdrive, All Season Radial, Anti-Lock Brakes, Argent Front/Rear Bumper, Tinted Glass, 5500 Lb. GVWR Package, Electronic Radio, Air Conditioning, Power Steering & Brakes, Dual Vinyl Bucket Seats, Bodyside Molding.

New 1991 Clearance Priced!



1992 F-350 4x2 CUSTOM READING UTILITY BODY

Reading Body, Recessed 'V' Step Bumper, Ladder Racks, 5.8L EFI, Electronic Auto Overdrive, LT235/85R16E All Season Radials, Spare Tire, Anti-Lock Brakes, Handling Package, Knitted Vinyl Seat, AM/FM Stereo/Clock, Super Engine Cooling, Headliner Insulation Package, H.D. Battery, Chrome Bumper, L/Mount Mirrors, 3.55 Ratio Rear Axle.



1992 F-250 4x4 XLT LARIET DIESEL

7.3L Diesel, 4.10 Ratio Axle, Electronic Automatic Overdrive, Air Conditioning, Engine BLock Heater, Manual Locking Hubs, Low Mount Swingaway Mirrors, Two Wheel, Cruise Control, Power Windows, AM/FM Stereo Cassette, Step Bumper, Anti-Lock Brakes, All Season Radials, Trailer Tow/Camper Package.



1992 F-350 CREW CAB DIESEL DUAL REAR WHEEL

XLT Lariat, 7.3L Diesel, Electronic Automatic / Drive, 4.10 Limited Slip Rear, Anti-Lock Brakes, Air Conditioning, Camper Package, Chrome Step Bumper, Tachometer, Power Windows/Locks, Recreation Mirrors, Tilt Wheel, Cruise Control, Sliding Rear Window, Gauge Package, LT215/85R16 All Season Radials, Cloth Seat Trim, Spare Tire & Wheel.



1992 F-150 4x4 XLT "FLARESIDE" "NITE MODEL"

5.8L EFI, Electronic Automatic Overdrive, 3.55 Rear Axle, Touch Drive 4x4 System, P265/75R x15 RWL All Terrain Tires, Deep Dish Aluminum Wheels, Power Windows & Locks, AM/FM Stereo Cassette, Air Conditioning, Tilt Wheel, Cruise Control, Anti-Lock Brakes, Tachometer, Leather Wrapped Wheel.



1992 CLUB WAGON XLT "MOTOR TREND TRUCK OF THE YEAR"

5.8L V8, Electronic Automatic Overdrive, 3.55 Rear Axle, Anti-Lock Brakes, Deluxe Tu-Tone Paint, 6 Way Power Seat, Clearcoat Paint, Trailer Tow Package, P235/75R15 All Season Radials, Privacy Glass, AM/FM Stereo Cassette, Speed Control, Tilt Wheel, Power Windows/Locks, Console, Quad Reclining Captains Chairs With Seat/Bed, 7 Passenger Capacity, Drivers Side Air Bag Equipped.

AIR BAG EQUIPPED

HALDEMAN

MAIN STREET • KUTZTOWN, PA • (215) 683-3553
 BUSINESS HOURS 8:30 AM- 9 PM (MON.-THURS.) 8:30 AM-6 PM (FRI.-SAT.)
 CONVENIENTLY LOCATED BETWEEN READING AND ALLENTOWN