

# How to get more bite for your buck.

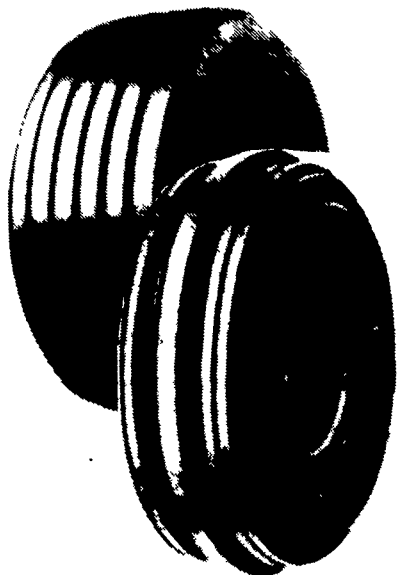
**QUALITY • SERVICE • DEPENDABILITY • ECONOMY**

## FARM UTILITY TIRE

Strong, Long Wearing

**\$42.00**

9.5L-14 6 Ply



SIZE	PLY	SALE PRICE
9.5Lx15 TT	8 Ply	\$45.00
11Lx14 TT	6 Ply	\$50.00
11Lx14 TT	8 Ply	\$53.00
11Lx15 TT	8 Ply	\$46.00
12.5Lx15 TT	10 Ply	\$71.00
12.5Lx16 TT	14 Ply	\$83.00

ENDS 12/31/91

## SAFEMARK

Premium Three-Rib Front Tractor Tire

**\$31.00**

500x15 Tubetype 4 Ply

SIZE	PLY	SALE PRICE
600x16 Tube Type	6 Ply	\$44.00
750x16 Tube Type	6 Ply	\$62.00
1000x16 Tube Type	8 Ply	\$98.00
1100x16 Tube Type	8 Ply	\$119.00

## MULTI-ANGLE

### MB

- Excellent drawbar pull with long-bar, short-bar lugs for improved traction.
- Designed for improved stability and roadability, plus reduced vibration.
- Strong angle-braced lugs have self-cleaning design.
- High-strength polyester cord body and heavy duty rim shield help protect tire from damage.



## SAFEMARK STEP UP TO QUALITY

### SUPER SPORT AP RADIAL

- Excellent Off-Road Traction And Lug, Even Wear On The Highway
- Two Steel Belts For Strength And Stability
- Smooth Riding Polyester Radial Cord Plugs
- Wide, Flat Footprint Gives Positive Traction In All Positions

SIZE	PLY	PRICE
P20575 R14	SL	\$49
P21575 R15	SL	\$54
P23575 R15	SL	\$58
LT23575 R15	C	\$79
31x1050 R15	B	\$90
LT21585 R16	D	\$77
LT22575 R16	D	\$79
LT23585 R16	E	\$95
LT24575 R16	E	\$98



### ECONOMY RADIAL

- All-Season Tread Design Fights Hydroplaning
- Double Steel Belts Protect Against Bruises And Punctures
- Distinctive Outline Black Lettering

WHITEWALL SIZE	PRICE
P18580R13	\$29.00
P18580R13	\$32.00
P17580R13	\$34.00
P18580R13	\$35.00
P18578R14	\$37.00
P19578R14	\$38.00
P20578R14	\$40.00
P21578R14	\$43.00
P20578R15	\$41.00
P21578R15	\$44.00
P22578R15	\$46.00
P22578R15	\$48.00



### SBR IV

- Two Tough Steel Belts For Puncture Resistance
- Polyester Cord Plies For Smooth Ride
- Distinctive Sidewall Styling For Premium Appearance

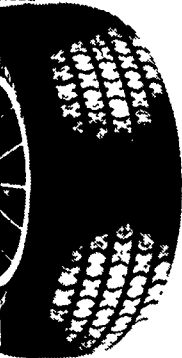
WHITEWALL SIZE	PRICE
P18580R13	\$39.00
P18580R13	\$41.00
P17580R13	\$43.00
P18580R13	\$45.00
P18578R14	\$47.00
P19578R14	\$49.00
P20578R14	\$52.00
P20578R15	\$52.00
P21578R15	\$56.00
P22578R15	\$58.00
P23578R15	\$61.00



### PACEMARK

- "SR" Speed Rated For Quality And Integrity
- M+S Rated For All Season Traction
- High Traction, High Mileage Tread Compound

OUTLINE WHITE LETTER SIZE	PRICE
P17570R13	\$55.00
P18570R13	\$56.00
P18570R14	\$59.00
P19570R14	\$62.00
P20570R14	\$65.00
P21570R14	\$69.00
P22570R14	\$72.00
P21580R14	\$68.00
P21585R15	\$75.00
P19580R15	\$62.00



SIZE AND DESCRIPTION	SALE PRICE
11.2-24 Tube Type 4 Ply	\$139.00
12.4-28 Tube Type 4 Ply	\$171.00
15.5-38 Tube Type 6 Ply	\$296.00
18.4-34 Tube Type 6 Ply	\$379.00
18.4-38 Tube Type 6 Ply	\$419.00
20.8-38 Tube Type 8 Ply	\$599.00



### BATTERY BARGAIN

**\$47.00**  
5-26 515 AMPS

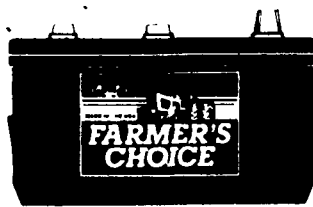
- Dependable performance in all weather conditions
- Unique billboard vent appearance

- Higher cranking than conventional batteries
- Sizes to fit most domestic and import cars and light trucks

### FARM TRACTOR BATTERY

**\$66.00**  
FC-30H 560 AMPS

- Rugged high impact case and cover for vibration resistance



- Increased starting power
- Built to last-season after season
- Made in the USA

## Contact A Participating Dealer Listed Below

or  
(Call 1-800-PFA-TIRE for dealer nearest you.)

**Adams**  
Mar-Bar Tire Service  
Hanover, PA 17331  
(717) 633-6412

**Lancaster**  
Leola Tire Service  
Leola, PA 17540  
(717) 656-2574

**Yinglings Implement**  
Gettysburg, PA 17325  
(717) 359-4848

**Lancaster**  
Messick Farm Equipment  
Elizabethtown, PA  
(717) 367-1319

**Blair**  
Rhode's Farm Supply  
Williamsburg, PA 16693  
(814) 832-2491

**Lebanon**  
Lebanon Valley Implement Co., Inc.  
Richland, PA 17087  
(717) 866-7518

### Bradford/Sullivan

Histand Farm & Home Service  
Rome, PA 18837  
(717) 744-2371

**Lehigh Co.**  
Kermit K. Kistler  
Lynnport, PA 18066  
(215) 298-2011

### Centre

Dunkle & Grieb  
Centre Hall, PA 16828  
(814) 364-1421

**Mifflin**  
Miller-Lake, Inc.  
Belleville, PA 17004  
(717) 935-2335

### Chester/Delaware

S.G. Lewis & Sons  
West Grove, PA 19390  
(215) 869-2214

**Northampton/Monroe**  
Northampton Farm Bureau  
Tatamy, PA 18085  
(215) 759-3254

**Stoltzfus Farm Service**  
Cochranville, PA 19330  
(215) 593-2407/2408

**Northumberland**  
Rovendale Supply  
Watsonstown, PA 17777  
717-538-5521  
800-232-DALE

### Clinton

Dotterer Equipment, Inc.  
Mill Hall, PA 17751  
(717) 726-3471

**Potter**  
Gross Supply  
Westfield, PA 16950  
814-367-5468

### Columbia

Steve Shannon Tire Co., Inc.  
Bloomsburg, PA 17815  
(800) 343-TIRE

**Schuylkill**  
Charles Snyder, Inc.  
Tamaqua, PA 18252  
(717) 386-5945

### Cumberland

Barrick Tire Sales  
Newville, PA 17241  
(717) 776-5762

**Somerset**  
Maple City Tire  
Meyersdale, PA 15552  
(814) 634-0545

### Erie

Mike's Auto Repair  
North East, PA 16428  
(814) 725-9091

**Union**  
Mifflinburg Farm Supply, Inc.  
Mifflinburg, PA 17844  
(717) 966-3114/3115

### Franklin

Forrester Farm Equip., LTD  
Chambersburg, PA 17201  
717-263-0705

**Stoneham's**  
Waynesboro, PA 17268  
(717) 762-3614

**Washington**  
Canonsburg Supply & Equipment Co., Inc.  
Canonsburg, PA 15317  
(412) 746-2500

**Bruce B. Gamble & Sons**  
Concord, PA 17217  
(717) 349-2670

**Wyoming Co.**  
J. Roberts & Son Tire Co.  
Meshoppen, PA 18630  
(717) 833-5582

**Eulton**  
Clugston Farm Equipment  
Needmore, PA 17238  
(717) 573-2215

**York Co.**  
Isenock Service Center  
Glen Rock, PA 17327  
(717) 235-1047

**Greene**  
Burns Tire Service  
Waynesburg, PA 15370  
412-627-8263

**Jefferson**  
McGarvey Equipment  
Reynoldsville, PA 15851  
814-653-9637

**Corn Hill Farm, Inc.**  
Etters, PA 17319  
(717) 938-2012



# SAFEMARK

Division of Pennsylvania Farmers' Association  
Camp Hill, PA 17011  
CALL TOLL FREE  
1-800-PFA-TIRE  
For Dealer Nearest You

A Proud Tradition of Quality, Value and Service.

- QUALITY
- SERVICE

- DEPENDABILITY
- ECONOMY

**NOW SERVING  
NEW YORK &  
NEW JERSEY**