

Penn State Livestock Team Completes Outstanding Season

UNIVERSITY PARK (Centre Co.) — With six interested and highly dedicated undergraduate students, only one of whom had participated in a formal livestock judging program previously, the Penn State Livestock Judging Team eagerly set out to re-establish prominence of the judging program.

Team members included Mark Lewis, an ag science major from Pleasant Mount, Wayne County; Annette Lovell, a dairy and animal science major from Linden, Lycoming County; Donna MacCauley, a two-year ag business management major from Atglen, Chester County; Kelley Shearer, a dairy and animal science major from Lancaster; Donnie Sheiss, a dairy and animal science major from Chambersburg, Franklin County; and John Weston, an ag business management major from Waterford, Erie County. The team was coached by Keith Bryan, instructor of dairy and animal science.

Penn State Second At Eastern States

The livestock judging season began on Saturday, September 14, at the Eastern States Exposition in West Springfield, Mass. Following only three weeks of practice during fall semester and a precontest workout that included stops at Rally Farms (Angus cattle) and Northview Farm (Suffolk sheep) in Millbrook, N.Y., as well as Gallaghers Farm (Angus cattle and Hampshire sheep) in Ghent, N.Y., the team was prepared for their initial competition.

As a team, Penn State garnered second in sheep, swine and oral reasons, then outscored Virginia Tech in beef cattle judging to win that division and finish second overall.

In the individual species categories, Penn State team members were quite successful and finished with several noteworthy placings. Donnie Sheiss had a truly outstanding day. After placing 10 out of 12 classes correctly and only dropping 6 points on placings,

Donnie handily won three out of four categories, including sheep (293 out of 300 points), swine (290 out of 300 points) and oral reasons (281 out of 300 points). In beef cattle, Donnie finished second with a score of 292.

Mark Lewis finished fourth in swine and beef cattle and eighth in oral reasons, while Annette Lovell placed ninth in swine and eighth in sheep and beef cattle. Donna MacCauley placed seventh in beef cattle and ninth in oral reasons, while Kelley Shearer garnered sixth in swine and fourth in oral reasons. John Weston finished ninth in beef cattle.

As individuals overall in the contest, Donnie Sheiss won by 23 points over the next closest competitor, scoring 875 points out of 900 possible. Mark Lewis and Annette Lovell finished sixth and eighth, respectively, while Donna MacCauley, Kelley Shearer, and John Weston finished 10th, 11th and 13th overall.

Penn State Wins Eastern National

The second contest of the season took place on Saturday, September 28, at the Eastern National Livestock Show in Timonium, Md. After finishing second to Virginia Tech at Eastern States, the team believed they had something to prove. Following a precontest workout at the farm of Frank and Julie Feeser (Hampshire and Yorkshire swine) in Taneytown, Md., the team was ready for competition.

In beef cattle, sheep, and oral reasons, the Penn State team outscored Virginia Tech and the University of Kentucky to win each of these divisions and went on to finish first overall in the contest. The only blemish of the day for the Penn State team was their third place finish in swine, which they would eventually avenge at the Keystone International.

In the individual categories, Penn State team members enjoyed another successful day. In beef cattle judging, Donnie Sheiss finished second and Kelley Shearer placed third. Meanwhile, Donna MacCauley and John Weston placed sixth and seventh, respectively. In swine judging, Donnie Sheiss was high individual after accumulating 344 out of 350 points, and Kelley Shearer was 10th. The sheep judging division

was grouped a little more tightly as Penn State placed four team members in the top 10 individual spots. Donna MacCauley, Kelley Shearer, Donnie Sheiss and John Weston finished third, fourth, fifth, and eighth, respectively. In oral reasons, Donnie Sheiss was again high individual with 368 out of 400 points, Kelley Shearer garnered second with 357 points, and John Weston finished eighth.

In the overall contest, Donnie Sheiss won by 38 points over the next closest competitor scoring 925 points out of 1,000 points possible. Kelley Shearer and Donna MacCauley finished third and fifth, respectively, while John Weston, placed 10th. Mark Lewis and Annette Lovell also contributed to the team's success with consistently logical placings and strong oral reason presentations.

Penn State Wins at Home

On Saturday, October 5, the Penn State Livestock Judging Team maintained the momentum acquired after winning the Eastern National contest, and continued their very successful season by capturing top honors at the Keystone International Collegiate Livestock Judging Contest in Harrisburg. This was the first time in nine years that a team from Penn State had won at the Keystone.

In somewhat of a reversal from

(Turn to Page C5)



The 1991 Penn State Livestock Judging Team. Seated, left to right, Kelley Shearer, Annette Lovell, Donna MacCauley. Standing, left to right, Mark Lewis, Donnie Sheiss, John Weston and Keith Bryan (coach).

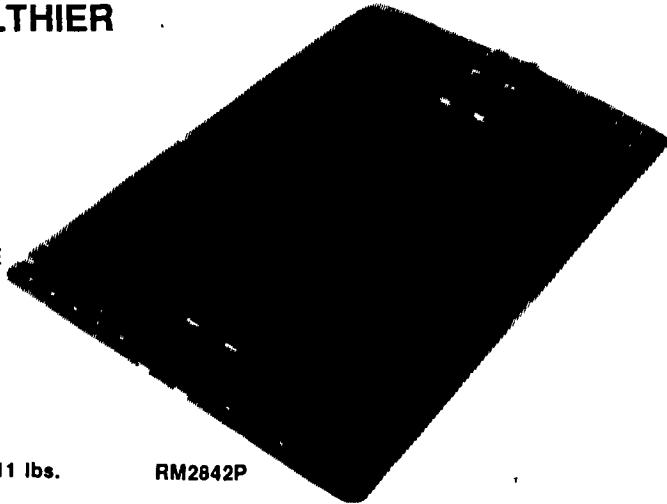
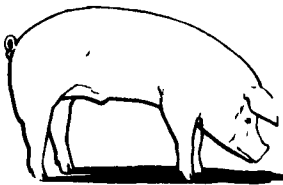
CREEP PAD

WE MAKE YOUR WORK CLEANER, FASTER, AND HEALTHIER

PIGS STAY WARM, DRY AND COMFORTABLE ON THIS BLACK RUBBER CREEP MAT. IT ABSORBS RADIANT HEAT WHILE BLOCKING DRAFTS THROUGH FLOORS AND PROVIDES INSULATION ITS FLEXIBILITY PREVENTS DAMAGE WHEN KICKED BY THE SOW, WHILE TAPS LOCK IT UNDER THE CREEP DIVIDER. THE INEXPENSIVE MAT CLEANS EASILY, YET THE SOFT, RIBBED SURFACE PROVIDES EXCELLENT TRACTION FOR BABY PIGS

DOUBLE MAT 28"x42" UPS Weight 11 lbs.

RM2842P



Check Our Warehouse Prices

We Ship UPS

Swine & Poultry Systems Specialists

FARMER BOY AG.

410 E LINCOLN AVE

MYERSTOWN, PA 17067

Hours: M-F 7:00-5:00; Sat. 7:30-11:30

PH. 717-866-7565

12-7

Rolling on in the 90's



Meets the challenge

3-BAR CHISEL PLOWS 7'-16'



11 Ft. mounted chisel plow with 32 inch shanks and spring clamp assemblies with gauge wheels and reversible regular chisel points.

The Billion 3-Bar Mounted Chisel Plow is available with 1"x2"x26" or 1 1/2" x2"x32" shanks. Available in 7'-16'. Options include gauge wheel kits for both 26" & 32" shanks. Also available are 2', 4', and 6' extension kits.

Contact one of the below listed dealers:

PENNSYLVANIA

Adamstown
ADAMSTOWN
EQUIP. INC.

Bechtelsville
MILLER
EQUIP. CO

Berwick
CH. RINEHIMER
& SONS

Dover
GEORGE N
GROSS, INC

Easton
GEORGE V.
SEIPLE

Elizabethtown
MESSICK FARM
EQUIPMENT CO.

Gettysburg
YINGLING
IMPLEMENT

Intercourse
C.B. HOOBER
& SON

Lancaster
LANDIS
BROTHERS, INC

Lebanon
UMBERGER'S
OF FONTANA

Maxatawny
N.H. FLICKER &
SONS, INC.

Needmore
CLUGSTON
FARM EQUIPMENT

New Holland
A.B.C. GROFF, INC.

Oley
PIKEVILLE
EQUIPMENT, INC

Quarryville
GRUMELLI FARM
SERVICE

Somerset
SUMMIT
MACHINERY, INC

Tamaqua
CHARLES
SNYDER, INC

Watsontown
DEERFIELD AG &
TURF CENTER, INC.

West Grove
S.G. LEWIS &
SON, INC

MARYLAND
Rising Sun
AG INDUSTRIAL
EQUIPMENT

Churchville
WALTER G
COALE, INC.

Frederick
CERESVILLE FORD
NEW HOLLAND

NEW JERSEY
Bridgeton
LESLIE FOGG

Columbus
REED BROTHERS
EQUIPMENT

Elmer
POLE TAVERN
EQUIP.
SALES CORP

Fairfield
CALDWELL
TRACTOR &
EQUIPMENT