

Public Auction Register

Closing Date Monday 5:00 P.M.
of each week's publication

MAR.

Rt 896 Georgetown, PA, in the village of Georgetown, local auctioneers

SAT. MAR 7 - 8 30AM, 28th Annual Bart Twp Fire Co All Day Sale, located at

SAT MAR 21 - 8 30AM, 4th Annual Bart Twp Fire

PUBLIC AUCTION
VALUABLE FARM EQUIPMENT
SKID LOADER
CATTLE & GRAIN TRUCKS & DAIRY EQUIPMENT

Friday, Jan. 3, 1992
at 10:30 A.M.

Exit off the Northeast ext. of turnpike at Lansdale exit, turn E. onto Rt. 63 go .2 mile, then follow Rt. 63 left for another 2 miles to Hatfield Quality Meats sign, turn onto Funk Rd. go .7 mile, turn R onto Derstine Rd., go 1 mile to 1st farm on right, Montgomery Co., Pa.

JD 4230 w/pwr shift, 4 post roll guard, 3870 hrs; JD 2440 w/2660 hrs & JD 175 frt end loader; Farmall 966 w/overhauled TA major engine repairs; Farmall 806 w/3pt; Farmall H tractor; JD 6620 hillside combine w/hydro, flex grain & c heads; 1977 Chev 30 truck w/11' Eby alum. body w/box for winch, 92,000 miles; 1984 Ford F-250 w/auto trans, 5.8 litre engine, 58,000 miles; Bob Cat 610 skid loader; plus full line of modern farm equip.

For
JOHN & PAUL ROHR

Conducted by
Ralph W. Zettlemoyer Auction Co., Inc.
(215) 395-8084
Pa. License #AU-001809-L

P.O. Box 215 • Fogelsville PA 18051 • 215 395 8084 • License #AU001809 L
RALPH W. ZETZLEMOYER AUCTION CO., INC.

PUBLIC AUCTION

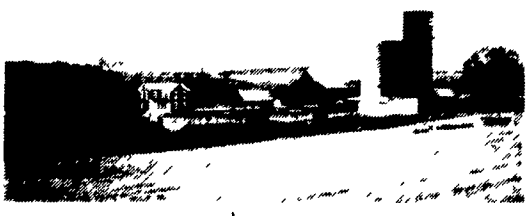
OF 142 ACRE FARM, FARM EQUIPMENT & ANTIQUES

Saturday, Dec. 28th, 1991

@ 10:00 A.M.

Real Estate @ 11:00 A.M.

Located 6 miles south of Danville, take SR 2002 Road east off of Rt. 54.



PROPERTY CONSISTS OF: 2 1/2 story brick dwelling with 4 bedrooms and bath; hot air heat; property in good condition. Stone and frame bank barn and feed lot with 110' chain feeder, 150 head capacity. 20x50 Star Silo
20x50 Harvestore Silo
20x70 Harvestore Silo
Feed room with roller mill, Patz feed mover, Fry chute and head scales.
Several other out buildings.
116 tillable acres; 9 acres pasture with 4' woven wire around; stream and large cement water trough; 17 acres woodland; 60-70 walnut trees for veneering; 142 acres total; hith producing soil.
TERMS: 10% day of sale; settlement on or before February 28, 1992. Inspection by appointment, call Horning Farm Agency 215-286-5183.

Terms By:

Lloyd E. & Frances J. George
717-356-7482
Edward Miller, Esquire
Lancaster, Pa.

HFA
Horning Farm Agency, Inc.
Alvin Horning AU-0433-L
Merle Eberly AU-2417-L
Main Street, Morgantown
215-286-5183



Co Building Material Sale, located at Rt 896, Georgetown, PA in the village of Georgetown, local auctioneers.

Farm Equipment, Tools, Etc Located 2 1/2 Miles East Of Lancaster, 1 Mile Northeast Of Route 340 At 2008 Horseshoe Road, East Lampeter Twp, Lanc Co, Pa Owner, Paul Smucker. Diffenbach's Auct

FEB.

SAT FEB 1st - 5PM, 6th Annual Consignment Auction of Farm Toys and Toy Trucks at the New Holland Fire House on E Main St., Dale Stoltzfus, Auct.

MON FEB. 3, C.A.G. Farms, Inc. Dispersal-Potato-Sod-Spinach-Pickle-Carrot-Grain Equipment and Irrigation Lines, located Massey, MD, Kent Co., Charles A Gemberling, owner, Pirrung Auctioneers, Inc., Aucts

SAT FEB 8 - 9AM, Mules, Horses, Full Line Of Good

MON FEB. 10, Potato and Grain Farm Equip, Auction for the Estate of Clyde Cross, Pike, NY, Wyoming Co., Pirrung Auctioneers, Inc., Aucts

TUES FEB 11 - 9 30AM, Livestock & Farm Equipment Located 3 Miles Northwest Of Intercourse, 1/2 North Of Route 472 From Mascot Mill (Resslers) First Farm On Right Along Stumptown Road Owner, Abram S Stoltzfus Diffenbach's Auct

SAT FEB 15 - 9AM, Public Sale of Farm Machinery and Livestock located on Good's Road, 2 miles southwest of Hinkletown, 2 miles northeast of Farmersville, 1 mile off Farmersville Road Terms by Ammon Z Martin Paul Snyder, Auctioneer

SAT FEB 15 - 10AM, Farm Equipment, located along Sunnyburn Rd., Mt Joy Twp, Lanc Co, PA, Robert E. & Loraine D Ginder, owners, Horning Farm Agency, Inc., Aucts

MON. FEB 17, Major and Valuable Coin Auction for the Estate of Lester Eugene Reynolds, at the Coachlight Motel Banquet Room, Hornell, NY, Steuben Co., Pirrung Auctioneers, Aucts

TUES FEB 18 - 9 30AM, Horse Drawn Farm Machinery, Horses and Holstein Heifers, located 1 mi SW of Gap, rom Rt 41 at town clock cross railroad bridge to stop sign, turn left on Mine Rd., follow Mine Rd to Buck Hill Rd., 2nd

road on left, turn left go to 1st farm on right, Sadsbury Twp, Lanc Co, Elmer K Lantz, Sr, owner, Leon D Kurtz and J Omar Stoltzfus, Aucts

TUES FEB 18 - 10AM, Full Line Of Modern Farm Equipment Located 8 Miles South Of Quarryville, 6 Miles North Of Oxford, Little Britian Road Off Route 222 East On Noble Road, Left On Spring Hill Road To Sale, Lanc Co Pa Owners, Allen & Arlene Weaver Diffenbach's Auct

WED FEB 19 - 9 30AM, Farm Machinery, 6 Head of Mules, A Few HH Goods located Lancaster Co PA 2 mi W of Whitehorse David S & Naomi Stoltzfus owners Steve and Steve Jr Petersheim, Aucts

FRI FEB 28, Registered and Grade Holstein Dispersal Together w/Barn Equip and Produce, located Arkport, NY, Steuben Co., Fay and Barbara Bennett, owners, Pirrung Auctioneers, Inc., Aucts

JAN.

FRI JAN 3 - 10 30AM, Farm Equip, Skid Loader, Cattle & Grain Trucks, Dairy Equip, located Exit off the NE ext of turnpike at Lansdale exit, turn E onto Rt 63 go 2 mi, then follow Rt 63 left for anoth 2 mi to Hatfield Quality Meats sign, turn onto Funk Rd., go .7 mi, turn R onto Derstine Rd., go 1 mi to 1st farm on right, Montgomery Co, PA, John & Paul Rohr, owners, Ralph W Zettlemoyer Auct Co, Inc., Aucts

FRI JAN 3 - 11AM, 101 Acre Farm and 20 Acre Parcel, located along Sunnyburn Rd., Mt Joy Twp, Lanc Co, PA, Robert E & Loraine D. Ginder, owners, Horning Farm Agency, Inc., Aucts

Outstanding Lancaster County Farm

Public Auction

Lititz - Manheim Area
56 Acres M/L Limestone Soil
With Gentle Slope

Wednesday, Dec. 11, 1991

Auction Time: 1:00 P.M.

Location: 849 Temperance Hill Rd., Lititz, PA

Directions: From Lancaster, Route 501 North to Lititz. In Lititz turn West onto Route 772 (Orange St.), continue 2.5 miles to farm on right. Penn Township, Lancaster County, Pa.



Large 2 1/2 Story Frame Home: contains large modern kitchen with lot of cabinets & pantry area. Dining room; living room; family room; laundry area; 3 baths; 5 plus bedrooms; attic and basement area; attached garage. Oil fired hot water baseboard heat. Home recently remodeled and has all Thermopane replacement windows.

Large Bank Barn: with extended roof over feed lot for approx. 125 head of cattle. bunk trough with automatic feeder.

Silo: 20x64 concrete with Starline ring drive unloader; supplement bin with flex auger.

Hog Facilities: farrow to feeder pig; 160 sow capacity with nursery and gestation area.

Veal Barn: 80 head capacity.

Manure Facilities: New 12x40 concrete manure pit to service both hog and veal facilities.

- * 2 wells & pressure systems
- * 2-car garage
- * lot of road frontage
- * macadam lane
- * 35 KW auto generator
- * most of farm tillable

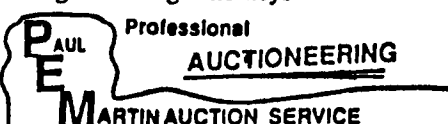
Open House: Saturday, November 9, November 16 and November 23 12:00 Noon to 3:00 P.M., or by appointment. Balance of farm can be seen anytime. For appointment to see farm, **free transportation**, or assistance to obtain financing call Paul E. Martin Auct. at 717-733-3511.

Terms: 10% down day of auction, balance at final settlement on or before April 1, 1992.

Note: This farm has good, level limestone soil. Buildings are in excellent condition setting back from the road, with Southern exposure. Do not miss seeing this terrific farm, with many possibilities, located in a farming community.

Auction by:
Donald E. & Marian R. Nolt
Ronald E. & Denise L. Nolt

Young & Young Attorneys



Paul E. Martin 717-733-3511
Aaron E. Martin 717-738-4168
Ephrata, PA

PUBLIC AUCTION
ANTIQUF FARM
EQUIPMENT & PARTS OF THE FORMER

J.B. HOSTETTER & SONS
IH & NH DEALERSHIPS
Of Mt. Joy, Pa.

SAT., DEC. 21, 1991

At 9 O'Clock

Located rear of 33 W. Main St., Mt. Joy, Pa.

Regular Farmall on steel (not running) Continental engine, other engines & parts, IH mowers/rakes/plows, MH baler parts, bins and more bins of IH and NH parts, Ontario parts, plow shares, wheels, belts, chains, tires, gears, sickle bars, lg. circular saw blades, motor parts, wooden wheels, elevator, vices, air compressor, PARTS MANUALS, advertising items, scrap iron.

This is just a partial listing of the MANY, MANY antique, new & used parts.

If you're looking for antique parts for farm equipment, don't miss this sale.

Sale by
CLARENCE
HOSTETTER

Aucts. AU6171L
Raymond Miller 653-8762
Jim Hershey 665-7284

PUBLIC SALE

Mule Drawn Farm Machinery • 2 Tractors on Steel
8 Head of Sorrel Mules • 5 Calf Hutches
11 Head of Holstein Heifers

Wednesday,
December 11, 1991
9:30 AM

Sale Held at Farm 4 miles east of Gap in Chester County, Pennsylvania, half mile North of Rt. 30 on Moscow Rd.

Mules • Harness • Hitches

Pair of 7 yr. old, 16 hands, exceptionally good team; Pair of smooth mouth; Pair of older mules, handy team, quiet for children; 2 single mules smooth mouth; 8 sets of Harness - collars - bridles; single - double - triple trees; 6 - 7 horse hitches.

Holstein Heifers

(Eleven open heifers, 5 breeding age, 6 smaller)

16 Horsepower Acme Diesel, good condition, presently used in shop

Farm Machinery

White Horse Machine 2 bottom plow, with tandem hitch; McDeering 2 way plow; 9 ft. Little Britain spring tooth harrow, new 4 years; John Deere 999 corn planter with plateless units; New Idea 323 corn picker, excellent condition; boom field sprayer with poly tank, roller pump with 3 h.p. engine; C-40 Gehl ensilage cutter good condition; New Holland 455 mower hydraulic on chassis, A.C. engine, sales separate; Cunningham crusher with interlocking rolls; combination 7 ft. bar mower with New Holland 404 crimper with 4 cylinder Wisconsin engine, hydraulic control; Pequea tedder; New Holland 55 rake; New Holland 310 baler with engine; 2 flat bed wagons; 16 ft. Zook - Ezee flow gears, good condition; 30 ft. Smoker elevator; corn drag; Stoltzfus liquid manure spreader; Stoltzfus 8 ft. manure pump; New Idea No. 17 manure spreader; log field roller, new 3 yrs.; 9 and 7 ft. single cultipackers; 4 forecarts, 2 w/steering & brakes; 50 ft. endless belt, like new; Hyd. unit w/Honda engine on chassis; 125 gal. gas tank; 2 wagons small items.

A.C. & Oliver Tractors

D19 Allis Chalmers gas on steel w/pulley; Hyd. Oliver 880 Diesel, both tractors in good running condition, Oliver needs pulley gear; 1 complete set of 4 tractor wheels and tires off A.C., power adjusting wheels 16-9-34 - 6-15-16 front.

Few Household Goods

New double glider lawn swing; Mahogany china closet; 4 matching chairs; cushion chair; child's play pen; etc.

Owners:

Eli S. & Rachel L. Diener

Auctioneer:
Steve
Steve Jr. Petersheim:
215-593-AUCT
Lic. #AU-001349-L

Plenty of Homemade Food