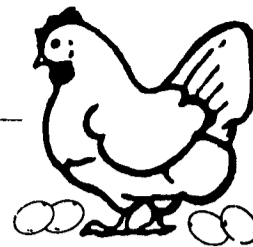
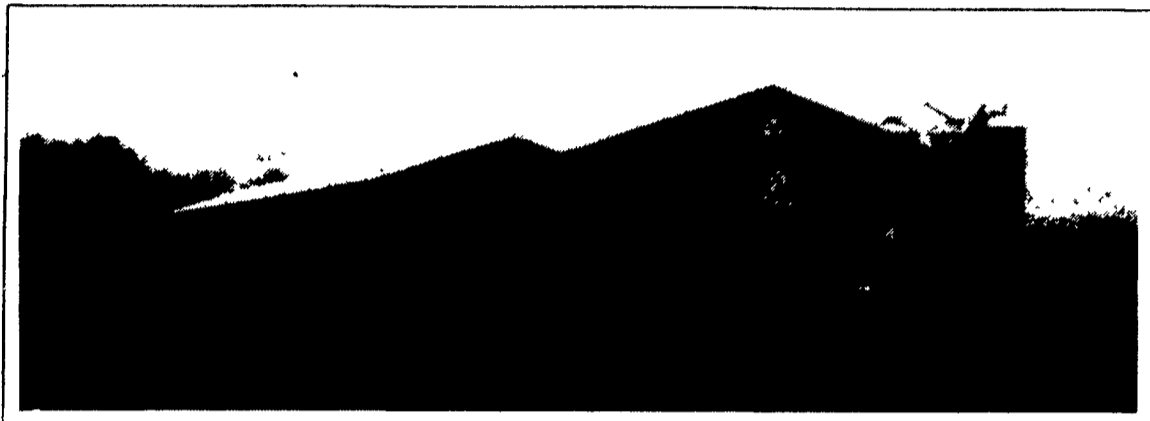


Thanks & Congratulations to

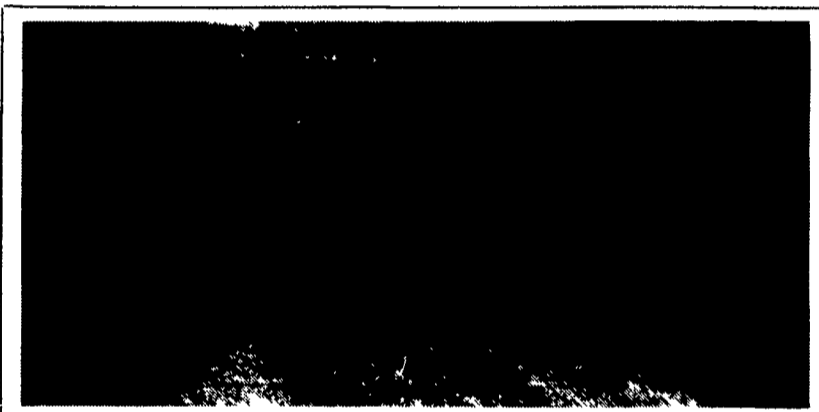


**THE MARTIN FARM
WAYNESBORO, PA**

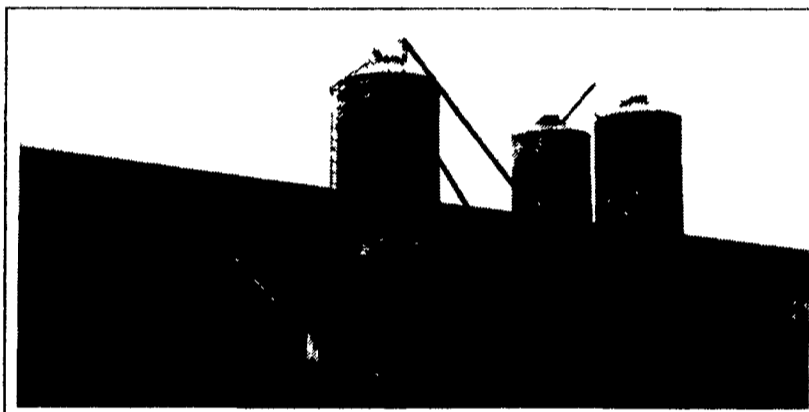
On The New **CHORE-TIME 108,864 Bird Layer
Facility Featuring 6 Rows 4 High DURACAGE® 504'
Long With **CHORE-TIME** ULTRAFLO® Feeding System**



The Martin Farm With **CHORE-TIME**
108,864 Bird Layer & Egg Room With
Diamond Systems 150 Case Farm Packer



Building By King Construction Co. Features Double-Braced 3-2x12 Douglas Fir Girders, Treated Post On Concrete Curbs, Extra Height in Pit For Easy Manure Removal, Steel Beam With Steel Posts At Pit Doors.



2- **CHORE-TIME** Feed Bins With Transfer Augers to A J-STAR Weigh Bin Allow Manager To Monitor Feed Consumption Anytime Throughout The Day.



Diamond Systems
150 Case
Farm Packer
Featuring Variable
Speed Packer
And **CHORE-TIME**
Variable Speed
Egg Collectors



CHORE-TIME 4-High
DURACAGE®

CHORE-TIME Dual Feed
Fill System

CHORE-TIME Variable Speed
Rubber Finger
Egg Collectors

It's Another
ULTRAFLO®
By

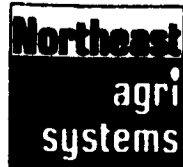


**Largest Manufacturer
of Poultry Systems in
the World**
— all made
in the U.S.A.

★ FEED AND BIRDS CONTRACTED BY WENGER FEEDS, RHEEMS, PA
★ FOR MORE INFORMATION ABOUT CONTRACTS & LAYER SYSTEMS CONTACT
NORTHEAST AGRI SYSTEMS 1-800-673-2580 OR LARRY HORST 717-656-7799

Equipment By

Buildings By



NORTHEAST AGRI SYSTEMS, INC.
FLYWAY BUSINESS PARK
139 A West Airport Rd. Lititz, PA 17543
(717) 569-2702 1-800-673-2580

KING CONSTRUCTION CO.
601 Overly Grove Road
New Holland, PA 17557
(717) 354-4740