

How to get more bite for your buck.

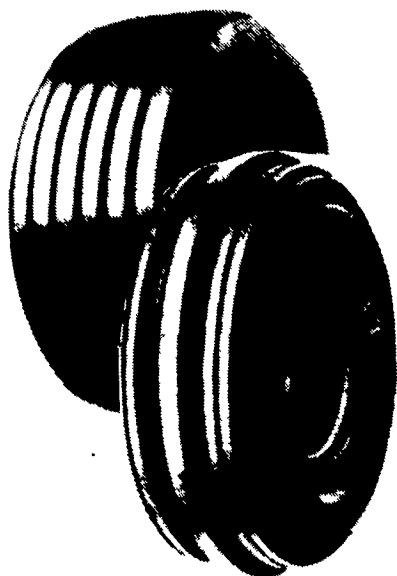
QUALITY • SERVICE • DEPENDABILITY • ECONOMY

FARM UTILITY TIRE

Strong, Long Wearing

\$42.00

9.5L-14 6 Ply



SIZE	PLY	SALE PRICE
9.5Lx15 TT	8 Ply	\$45.00
11Lx14 TT	6 Ply	\$50.00
11Lx14 TT	8 Ply	\$53.00
11Lx15 TT	8 Ply	\$46.00
12.5Lx15 TT	10 Ply	\$71.00
12.5Lx16 TT	14 Ply	\$83.00

ENDS 12/31/91

SAFEMARK

Premium Three-Rib Front Tractor Tire

\$31.00

500x15 Tubetype 4 Ply

SIZE	PLY	SALE PRICE
600x16 Tube Type	6 Ply	\$44.00
750x16 Tube Type	6 Ply	\$62.00
1000x16 Tube Type	8 Ply	\$98.00
1100x16 Tube Type	8 Ply	\$119.00

MULTI-ANGLE

MB

- Excellent drawbar pull with long-bar, short-bar lugs for improved traction.
- Designed for improved stability and roadability, plus reduced vibration.
- Strong angle-braced lugs have self-cleaning design.
- High-strength polyester cord body and heavy duty rim shield help protect tire from damage.



SIZE AND DESCRIPTION	SALE PRICE
11.2-24 Tube Type 4 Ply	\$139.00
12.4-28 Tube Type 4 Ply	\$171.00
15.5-38 Tube Type 6 Ply	\$296.00
18.4-34 Tube Type 6 Ply	\$379.00
18.4-38 Tube Type 6 Ply	\$419.00
20.8-38 Tube Type 8 Ply	\$599.00

SAFEMARK STEP UP TO QUALITY

SUPER SPORT AP RADIAL

- Excellent Off-Road Traction And Lug, Even Wear On The Highway
- Two Steel Belts For Strength And Stability
- Smooth Riding Polyester Radial Cord Plug
- Wide, Flat Footprint Gives Positive Traction In All Positions

SIZE	PLY	PRICE
P20575 R14	SL	\$49
P21575 R15	SL	\$54
P23575 R15	SL	\$58
LT23575 R15	C	\$79
31x1050 R15	B	\$90
LT21585 R16	D	\$77
LT22575 R16	D	\$79
LT23585 R16	E	\$95
LT24575 R16	E	\$98



ECONOMY RADIAL

- All-Season Tread Design Fights Hydroplaning
- Double Steel Belts Protect Against Bruises And Punctures
- Distinctive Outline Black Lettering

WHITEL WALL SIZE	PRICE
P15580R13	\$29.00
P16580R13	\$32.00
P17580R13	\$34.00
P18580R13	\$35.00
P18575R14	\$37.00
P19575R14	\$38.00
P20575R14	\$40.00
P21575R14	\$43.00
P20575R15	\$41.00
P21575R15	\$44.00
P22575R15	\$46.00
P22575R15	\$46.00



SBR IV

- Two Tough Steel Belts For Puncture Resistance
- Polyester Cord Piles For Smooth Ride
- Distinctive Sidewall Styling For Premium Appearance

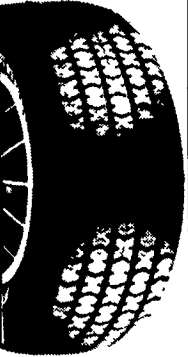
WHITEL WALL SIZE	PRICE
P16580R13	\$39.00
P16580R13	\$41.00
P17580R13	\$43.00
P18580R13	\$45.00
P18575R14	\$47.00
P19575R14	\$49.00
P20575R14	\$52.00
P20575R15	\$52.00
P21575R15	\$56.00
P22575R15	\$58.00
P23575R15	\$61.00



PACEMARK

- "SR" Speed Rated For Quality And Integrity
- M+S Rated For All Season Traction
- High Traction, High Mileage Tread Compound

OUTLINE WHITE LETTER SIZE	PRICE
P17570R13	\$55.00
P18570R13	\$56.00
P18570R14	\$59.00
P19570R14	\$62.00
P20570R14	\$65.00
P21570R14	\$69.00
P22570R14	\$72.00
P21560R14	\$68.00
P21565R15	\$75.00
P19580R15	\$62.00



BATTERY BARGAIN

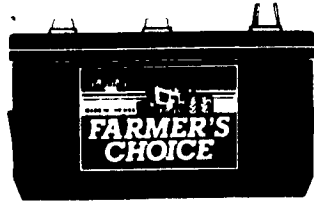
\$47.00
5-26 515 AMPS

- Higher cranking than conventional batteries
- Sizes to fit most domestic and import cars and light trucks

FARM TRACTOR BATTERY

\$66.00
FC-30H 560 AMPS

- Rugged high impact case and cover for vibration resistance



- Increased starting power
- Built to last-season after season
- Made in the USA

Contact A Participating Dealer Listed Below

or
(Call 1-800-PFA-TIRE for dealer nearest you.)

Adams
Mar-Bar Tire Service
Hanover, PA 17331
(717) 633-6412

Lancaster
Leola Tire Service
Leola, PA 17540
(717) 656-2574

Yinglings Implement
Gettysburg, PA 17325
(717) 359-4848

Lancaster Messick
Farm Equipment
Elizabethtown, PA
(717) 367-1319

Blair
Rhode's Farm Supply
Williamsburg, PA 16693
(814) 832-2491

Lebanon
Lebanon Valley Implement Co., Inc.
Richland, PA 17087
(717) 866-7518

Bradford/Sullivan
Hiland Farm & Home Service
Rome, PA 18837
(717) 744-2371

Lehigh Co.
Kermit K. Kistler
Lynnport, PA 18066
(215) 298-2011

Centre
Dunkle & Grieb
Centre Hall, PA 16828
(814) 364-1421

Mifflin
Miller-Lake, Inc.
Belleville, PA 17004
(717) 935-2335

Chester/Delaware
S.G. Lewis & Sons
West Grove, PA 19390
(215) 869-2214

Northampton/Monroe
Northampton Farm Bureau
Tatamy, PA 18085
(215) 759-3254

Stoltzfus Farm Service
Cochranville, PA 19330
(215) 593-2407/2408

Northumberland
Rovendale Supply
Watsontown, PA 17777
717-538-5521
800-232-DALE

Clinton
Dotterer Equipment, Inc.
Mill Hall, PA 17751
(717) 726-3471

Potter
Groff Supply
Westfield, PA 16950
814-367-5468

Columbia
Steve Shannon Tire Co., Inc.
Bloomsburg, PA 17815
(800) 343-TIRE

Schuylkill
Charles Snyder, Inc.
Tamaqua, PA 18252
(717) 386-5945

Cumberland
Barrick Tire Sales
Newville, PA 17241
(717) 776-5762

Somerset
Maple City Tire
Meyersdale, PA 15552
(814) 634-0545

Erie
Mike's Auto Repair
North East, PA 16428
(814) 725-9091

Franklin
Forrester Farm Equip., LTD
Chambersburg, PA 17201
717-263-0705

Union
Mifflinburg Farm Supply, Inc.
Mifflinburg, PA 17844
(717) 966-3114/3115

Stoneham's
Waynesboro, PA 17268
(717) 762-3614

Washington
Canonsburg Supply & Equipment Co., Inc.
Canonsburg, PA 15317
(412) 746-2500

Bruce B. Gamble & Sons
Concord, PA 17217
(717) 349-2670

Wyoming Co.
J. Roberts & Son Tire Co.
Meshoppen, PA 18630
(717) 833-5582

Fulton
Clugston Farm Equipment
Needmore, PA 17238
(717) 573-2215

Greene
Burns Tire Service
Waynesburg, PA 15370
412-627-8263

York Co.
Isenock Service Center
Glen Rock, PA 17327
(717) 235-1047

Jefferson
McGarvey Equipment
Reynoldsville, PA 15851
814-653-9637

Corn Hill Farm, Inc.
Etters, PA 17319
(717) 938-2012



SAFEMARK

Division of Pennsylvania Farmers' Association
Camp Hill, PA 17011
CALL TOLL FREE
1-800-PFA-TIRE
For Dealer Nearest You

A Proud Tradition of Quality, Value and Service.

- QUALITY
- SERVICE

- DEPENDABILITY
- ECONOMY

**NOW SERVING
NEW YORK &
NEW JERSEY**