

Hereford Association Elects Directors

KANSAS CITY, Mo. — Highlighting the American Hereford Association's (AHA) 110th annual meeting in Kansas City was the election of officers and directors.

Elected to the presidential position was James Bright, LeGrand, Calif. Bright has served as an AHA director since 1986 and the past year as the senior vice president. He succeeds L.C. "Lloyd" Whitehead, Dallas, Texas.

James Bright, a graduate of California Polytechnic State University, San Luis Obispo, began his Hereford career in 1963 with the present day, family-owned operation, Bright Brothers Herefords. He is a nationally known breeder and leader in the Hereford industry.

James has served as president of the California-Nevada Hereford Association and as president of the AHA's State Presidents Council. The Bright Brothers' cattle have enjoyed much success in the showing including the prestigious National Western Stock Show in Denver, Colo. In addition, the Bright Brothers named has earned recognition for holding one of the top production sales in the western states.

Thomas Bradbury, Byers, Colo., elected to the board of directors in 1988, was elevated to senior vice president position. The Bradbury family started raising Herefords more than 40 years ago with the present operation consisting of some 150 registered and 600 commercial cows. Tom has taken an active part in the cattle industry as well as his community serving as president of the Colorado Hereford Association; as a member of the AHA's State Presidents Council; as an advisor for the Colorado

Junior Hereford Association; as a board member of his bank, telephone, and gas cooperatives; and as president of the school board. Tom and his wife, Margaret, have three children.

Newly elected board of directors were John Dudley, Comanche, Texas and James Monahan, Hyanis, Neb.

John Dudley comes from a family that is one of the most recognized breeders in Texas. The Dudley Brothers operation was established in 1938 by John's late father, Gail, and two brothers. Encouraged by his father to pursue a career other than agriculture (since growing up on the ranch had already given him a good education), John received a bachelor of arts degree in political science from Trinity University in San Antonio, Texas and a bachelor of arts degree in Spanish and Latin American from Thunderbird Graduate School in Phoenix, Ariz. After serving in the Navy Reserve and pursuing some other interests, John returned to the ranch. John is a noted leader in the Hereford industry, serving as the Texas Hereford Association president in 1989-1990.

Many eyes have focused on the Circle Dot brand of Monahan Cattle Company over the years. Founded in 1887 by James Monahan's grandfather, James H., the Monahan Cattle Company has grown to be one of the largest commercial and registered Hereford operations in Nebraska. The Monahan name is familiar to Hereford breeders as leaders and active participants as James' late father, Earl, served as an AHA director in the 1950s and as president in



New officers of the American Junior Hereford Association are, left to right, front row, Amy Maddox, second vice president; Jenny Allan, secretary; Lisa Bryant, director; and Judith Oman, director. Back row, left to right, Joel Rausch, director; Dwight Sexton, first vice president; Jeff Fowle, president; Bob Weaber, treasurer; and Jody Watson, reporter.

1960. James currently is serving as president of the Nebraska Hereford Association and is a member

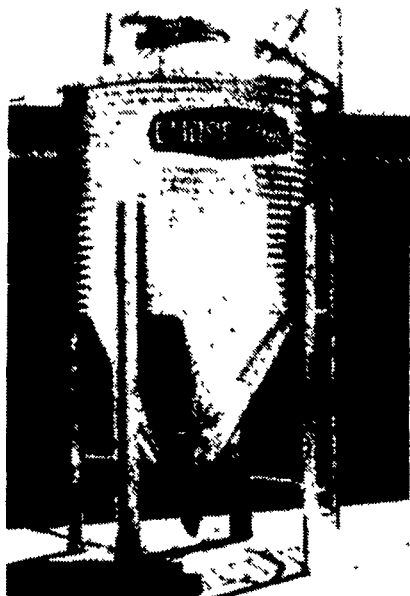
of several committees of the National Cattlemen's Association. James and his wife, Hildreth, have

four children of which their two sons, Bryan and Bob, take an active part in the operation.

BINS & AUGERS

CHORE-TIME AND **FLEX AUGER**
FEED BINS

Your Best Buy



We Will Assemble And Deliver Bins To Your Farm!

The feed bin is the very heart of any feeding system. If the bin lets you down, the system quits.

That's why we put so many quality features into our complete line of feed bins - which includes 6-foot diameter steel or polyethylene (great for H.M. corn), 6-foot, 7-foot, and 9-foot models. All are available in several capacities - so you have a wide selection of bins to fit your needs.

Here are just a few of the quality features that make our bins such an outstanding buy:

- Sturdy Ladder System
- All Bin Seams Are Double Caulked
- Choice of 16 or 25 Inch Hopper Opening
- All Galvanized Steel Parts

We Stock Truckloads Of Chore-Time Bins & Miles Of Chore-Time FLEX-AUGER

CALL OUR TOLL FREE CUSTOMER SERVICE NUMBER: 1-800-673-2580

Authorized **CHORE-TIME** Master Distributor

Northeast
agri
systems

NORTHEAST AGRICULTURAL SYSTEMS, INC.
FLYWAY BUSINESS PARK
139 A West Airport Rd.
Litz, PA 17543
(717) 569-2702



STORE HOURS
Mon-Fri
7:30-4:30
Sat. 7:30-11:30

Coming...

Binkley & Hurst Bros., Inc. Annual

DISCOUNT CASH & CARRY DAYS

Starting Wednesday, December 18th, 1991

**BIG SAVINGS ON PARTS
AND OTHER MACHINERY SPECIALS**

LOOK FOR FULL DETAILS IN THE DEC. 14th
ISSUE OF LANCASTER FARMING

CHOICE!

MODEL 350
10 1/2 Ton Unit

MODEL 200
6 Ton Unit

MODEL 240
7 Ton Unit

MODEL 170
5 Ton Unit

Four models...one just right for you!

Nu Hawk manure spreaders offer four ways to economically handle your fertilizing needs. Each model provides an option for any size operation at an "easy to handle" price. So take your pick of the litter, and choose a spreader that offers a perfect fit when it comes to size durability, and price: Nu Hawk by Ideal Industries.

RYDER SUPPLY CO.

P.O. Box 219
Chambersburg, PA 17201-0219
Phone 717-263-9111