

35 TRUCKS & TRAILERS

1973 Freightliner, CO, 903 Cummins, 9 speed, tandem, PTO, good rubber, \$3500; 42' flatbed trailer, as is \$300. 717-532-9472.

1973 Dodge 4 WD, 3/4 ton, steel bed pickup. Dual fuel tanks on bed. Tool boxes, power steering, front and rear hitches, new tires, snow plow, 51,000 miles. Best offer. 1(800)643-7056 MD.

FOR SALE: 750 Allison automatic w/lockup and PTO \$1,250. 453 Detroit w/5 speed, \$1,750. New 9-17.5 radials \$135. 17,000 lb. diesel truck, 2 speed rear, \$225. Hydraulic truck lift gate, \$200. (717)866-7213.

Manure tanker and more. '74 Dia. Reo with '88 Galbreath Rolloff Hoist System. Equipped with a 5000 gal. tank. Can be equipped with dump bed, flat bed and more. Good condition. Must see to appreciate. 717/267-3643.

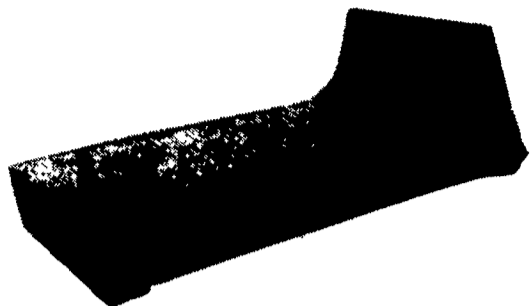
IH Tractor, 1976, 392-V8, 5+2, new 10.00R20, 30' flat trailer, good truck for hauling hay. 215/558-9398.

For Sale F800 Ford Truck Parts: 1948 - 1965 front ends, transmissions, rears. 717/345-3581.

1976 Chevrolet step-van series 20, GVW 7,000 lb. (717)529-2855.

1977 RL700L Mack, 300+, 13 speed, wet line. (717)653-9175.

TRUCK BODIES



Replacement Truck Beds

A complete line of heavy-duty all steel truck beds for utility or recreational purposes. sizes range from 6' to 12' lengths and fit all Chevrolet, GMC, Ford and Dodge pickup trucks. Sizes also available to fit Toyota, Nissan and other mini trucks. All truck beds have bulkheads constructed from 1 1/2" square tubing, diamond plate beds, rub rails with stake pockets and a 15" drop rear end. Cutouts are provided for tail lights along with mounting plates for marker lights on each corner. All beds are primed and painted standard black.

Made in U.S.A.

LENGTH	WIDTH	RAIL WIDTH	LIST
7 Ft.	66" or 78"	34, 38 or 40"	\$575
8 1/2 Ft.	80" or 90"	34 or 38"	595
10 Ft.	90"	34 or 38"	725
11 Ft.	90"	34 or 38"	850
12 Ft.	90"	34 or 38"	980
14 Ft.	90"	34 or 38"	1050
16 Ft.	90"	34 or 38"	1200
18 Ft.	90"	34 or 38"	1400
20 Ft.	90"	34 or 38"	1800

Standard Features Include:

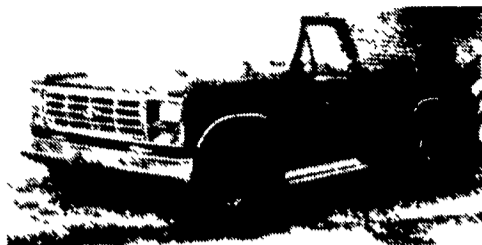
Head Board Stake Pockets Rub Rails
Diamond Plate Steel Floor or 2" Wood Floor

Installation Available

- Trailer Hitches • Body Accessories • Goose Neck Plates
- Hoists • Dump Kits • Trailer Towing Packages

RINGO HILL FARMS EQUIP. CO. INC.

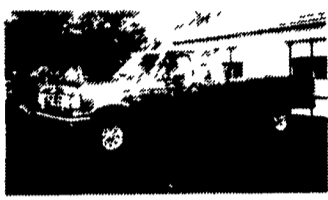
1624 Rt. 212, Pleasant Valley • Quakertown, PA 18951
(215) 346-7340 FAX: (215) 346-8041



1986 Ford F-150
6 Cyl., 3 Spd, With Overdrive, PS, PB, AM-FM, Real Nice
\$3,650
717-865-3488



81 Mack
44,000 Rears & Cat 3406 Engine
4250 Gal. Vacuum Tank, Isuzu Diesel or Vacuum Pump
In Good Condition
\$32,000
717-529-2512



1990 FORD F150
4x4 SUPER CAB
302 EFI, 5 Speed, PS, PB, Air, AM-FM, Dual Tanks, Lock Out Hubs, 17,000 Miles, With Bal. Of Factory Warranty, Ex. Cond.
\$13,500



1990 CHEVY
2500 HD 1/2 TON
4x4, 350 Auto, PS, PB, 8500 GVW, Limited Slip Differential, 8,000 Miles, With Bal. of Factory Warranty, Like New
\$13,500



1988 CHEVY 1500
1/2 TON 4x4
4.3, V6, H.D., 4 Speed, PS, PB, 18,000 Orig. Miles, BLue, Local, 1 Owner, Ex. Cond.
\$8,975



1990 FORD
XL E350 CLUB WAGON
12 Pass., 351 EFI, Auto, PS, PB, Dual Air & Heat, AM-FM, Dual Tanks, Privacy Glass, Charcoal, Ex. Cond.
\$11,500

A & J AUTO SALES

798 East Main Street - Rt. 322 East
Ephrata, PA 17522
Specializing In Late Model,
Low Mileage Trucks
717-733-2873



'79 Int'l S1724; 345 Gas; 5+2; PS; 20' Box w/Roll Door; Truck Is Ready To Work
\$4,500



'86 Ford F350; 6.9 Diesel; 4 Spd, P/S; 12' Bed w/Power Liftgate
\$5,500



'78 White Xpeditor II; NTC 290 Big Cam II; 9 Spd, PS, 20,000# F/A; 44,000# Rears; Hendrickson Susp; PTO Pump
\$6,800



'84 Int'l S1954; DT 466; 5+2; PS; Double Frame; 35,000# GVW; 20' Gas Reefer Body, Will Separate. Very Clean Truck
\$10,900



(11) '72-80 Autocar Air Ride Tractors; Cat Power (425 HP); 13 Spd; PS; Excellent Radial Rubber
From **\$6,000**

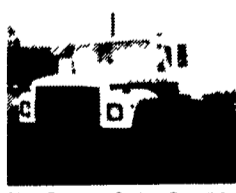


(40) '73-'80 Fruehauf Chip Trailers 40'-45' Double Posts & Crossmembers
From **\$2,500**



Honey Dipper

'86 Int'l S1700; 9.0 Diesel; 5 Spd;p PS; 1000 Gallon Suction Tank; Good Clean Truck



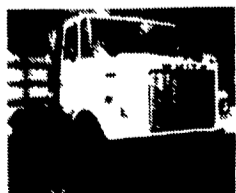
'81 S1854 & 82 S1954 Int'l Cab & Chassis, DT 466; 5+2; PS; Double Frame; 35,000 GVW PTO Pump
\$6,800

'84 Utility 45' Drop Deck Flat **\$8,000**

'80 Gr. Dane 42' Dropdeck Flat **\$6,500**

'78 Fontaine 42' Tri-axle Drop Deck, Flat **\$6,800**

'85 Utility 48'x102' Dropdeck Flat Air-Ride
\$7,800



'79 White T/A Tractor; 290 Cummins; 10 Spd; PS
Only **\$4,800**



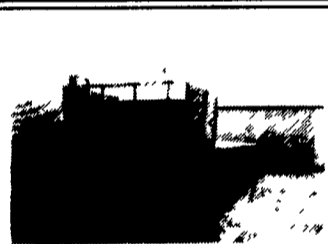
'81 Chevy Custom Deluxe 30 Weld Truck; Gas; AT; PS
\$2,300



'78 Ford LNT 9000; Silver 6V92TA; 10 Spd, PS; AC; Excellent Rubber
\$7,900 Make Offer



USED OIL TANKS, 2000 and 2500 Gallon Capacity **\$750 to \$1,000**



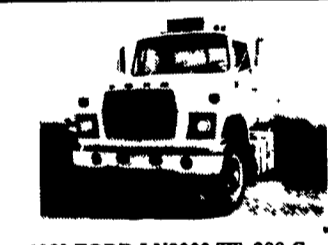
1970 TRAILCO 40' Flat, Sliding Tandem, 22" Rubber, **\$1,750**



HOLMES WRECKER BODY, Model 501-C, Twin Booms **\$850**



VAN BODIES 14', 16', 20', 22', 24', Prices Starting At **\$500**



1980 FORD LN9000 TT, 290 Cummins, 10 Speed, 38 Rears, Good Runner, New Paint, Reduced To **\$6,900**



1981 MACK MIDLINER, 18' Insulated Van, 175 Engine, 5 Speed, 10.00R20 Tires, 29,500 GVW, Good Unit **\$4,750**



77 WHITE RB 2 TT, 8V-71 Detroit, 10 Speed, 134C Rear with Neway Tag Axle, Air Assist Steering, Good Runner **\$3,250**



1982 GMC 7000, 366 Engine, 5 Speed, 22' FRP Van **\$2,950**



1977 FORD LN7000 WRECKER, 3208 Cat, AT, 650 Holmes Wrecker, 35 CFM Air Compressor, Radials (Will Separate) **\$8,500**



1972 WHITE COMPACT w/ Prentice Loader, 230 Cummins, 9 Speed, 38 Rears, PS, 24' Bed, Works Well **\$5,900**



1978 FORD CLT9000, Day Cab, V6-92T, 6 Speed, 38 Rears, State Inspected, Runs Good **\$2,950**



1986 IOWA MOLD TOOL CO. Hydraulic Swing Crane With Outriggers, 5000# Capacity **\$3,500**

H & L Sales Co.

3830 North George Street Extd., Manchester, PA 17345
Phone #(717) 764-2656 Fax #(717) 764-3990
USED TRUCKS • VANS • FLATS • STORAGE TRAILERS • RENTALS • SALES

FIRESTONE MOTORS, INC.

330 S. THIRD ST. • LEMOYNE, PA 17043 • (717) 763-7721