

**Central U.S. Carlot**

**Beef Report**

November 26, 1991

Report supplied by USDA

CENTRAL U.S. CARLOT BEEF REPORT (INCLUDES THE MAJOR PRODUCTION AREAS IN THE MIDWEST AND TEXAS) AS OF 3 P.M. COMPARED TO MONDAY'S 3 P.M. REPORT: CUTTER AND BULL CARCASSES STEADY IN THIN TEST. DEMAND MODERATE FOR VERY LIGHT SUPPLIES AND OFFERINGS, MOVEMENT SLOW.

**COW & BULL CARCASSES FOB OMAHA BASIS**  
3 LOADS REPORTED

UTBRK 2-4, LATEST ESTB. MKT. 76.00 C.

UT,BNG 1-3, 400 AND UP, LATEST ESTB MKT. 80.00-80.50 C.

CUTTER 1-2 350 AND UP, 1 LOAD, RANGE 91.50, LATEST ESTB. MKT. 91.50.

BULLS 500/UP YG1, 2 LOADS, RANGE 101.00, LATEST ESTB. MKT. 101.00.

**BONELESS PROCESSING BEEF/ BEEF TRIMMINGS**

98 LOADS REPORTED

FRESH 90% AND 85% LEAN 2.00-3.00 HIGHER. DEMAND GOOD FOR LIGHT TO MODERATE SUPPLIES AND OFFERINGS. BEEF TRIMMINGS HIGHER ON MODERATE DEMAND AND LIGHT TO MODERATE OFFERINGS.

**FOB OMAHA BASIS**

90%FR, 23 LOADS, RANGE 130.0-133.0, WT. AVG. 131.74.

90%FZ, UNQUOTED.

85%FR, 2 LOADS, RANGE 125.0, WT. AVG. 125.00.

85%FZ, 75%FR, 75%FZ, 65%FR, 65%FZ UNQUOTED.

50%FR, 54 LOADS, RANGE 41.00-44.00, WT. AVG. 42.30.

50%FZ, 50%BX UNQUOTED.

BULL 92-94, RANGE 146.0, WT. AVG. 146.00 A.

**FOB E. TX AND OK**

90%FR, 16 LOADS, RANGE 132.0-133.5, WT. AVG. 132.94.

90%FZ, 3 LOADS, RANGE 135.0, WT. AVG. 135.00.

85%FR, 85%FZ, 75%FR, 75%FZ, 65%FR, 65%FZ AND BULLS 92-94

UNQUOTED.

**CAF NORTHEAST AREAS**

90%FR, 90%FZ, 85%FR, 85%FZ, 75%FR, 75%FZ, 65%FR AND 65%FZ UNQUOTED.

\*\*ABCDE AFTER QUOTES REPRESENTS DAYS SINCE LAST ACTUAL MARKET TEST. QUOTES ARE DROPPED AFTER 5 DAYS OF NOT TEST OR BEFORE IF THEY NO LONGER REFLECT CURRENT MARKET CONDITIONS.\*\*

**Friend's Stockyard Inc.**

Accident, Md. 21520

November 25, 1991

**STOCK BULLS AND STEERS (200-500 LBS.) 70.00-92.00**

**STOCK HEIFERS 60.00-82.00.**  
SLAUGHTER STEERS GOOD TO CHOICE 64.00-68.10; MEDIUM TO GOOD 60.00-63.50; HEAVY CHOICE OVER 1450 LBS. 60.00-63.00.

**HOLSTEIN STEERS HEAVY 55.00-60.00; LIGHT 50.00-62.00.**

SLAUGHTER HEIFERS GOOD TO CHOICE 64.00-69.00; MEDIUM TO GOOD 55.50-63.75.

BULLS HEAVY 55.00-63.50; LIGHT 52.00-58.50.

COWS FEW HIGH DRESSING 47.00-52.50; UTILITY HOLSTEIN 45.00-51.00, CANNERS 43.00-48.50, COMMERCIAL TO GOOD 41.00-46.50, CULL COWS 40.00 AND DOWN.

VEALS GOOD TO CHOICE 80.00-92.00, MEDIUM TO GOOD 70.00-78.00.

BOB CALVES 65.00 AND DOWN.  
HOLSTEIN BULL CALVES, RETURN TO FARM (90-120 LBS.) 110.00-170.00.

HOLSTEIN HEIFER CALVES, RETURN TO FARM (100-120 LBS.) 100.00-155.00.

HOGS TOP QUALITY 38.00-41.25, HEAVY 37.00-38.25, LIGHT 35.00-37.00.

SOWS 30.00-37.00.

MALE HOGS: 26.00-30.50.

LAMBS: 41.00-44.75.

EGGS: LARGE .90-.94, MEDIUM .60-.66 AND SMALL .30-.38.

LIVESTOCK PRICES ARE ALL GIVEN PER HUNDREDWEIGHT!

*Some markets not available due to the holiday*

**Valley Stockyards**

Athens, Pa.

Monday, November 25, 1991

Report supplied by auction

HOLSTEIN HEIFER CALVES TO 165.00.

VEAL CALVES 75.00-85.00.

VEALER BULL CALVES 125.00-160.00.

SLAUGHTER CALVES 75.00 AND DOWN.

GRASSERS & FEEDERS 45.00-60.00.

LAMBS 42.00-48.50.

SHEEP 12.00-24.00.

HOGS 200-250 LBS 38.00-46.00.

SOWS 28.00-33.00.

BOARS 22.00-32.00.

PIGS BY LB. 55.00-70.00.

HEIFERS 44.00-52.00.

STEERS, NOT MKT. TEST.

FEEDER STEERS 40.00-65.00.

BULLS COMMON 44.00-53.50.  
GOOD COWS 46.00-49.00, FEW TO 52.00.  
COWS MEDIUM 42.00-46.00.  
COWS POOR OR SMALL 30.00-42.00.  
CATTLE MARKET STRONGER;  
CALF MARKET STEADY; EXPECT MARKET TO GET STRONGER.  
HORSES TO 410.00.  
PONIES TO 210.00.  
GOATS TO 62.50.

**Peoria Cattle**

Peoria, IL

Nov. 25, 1991

CATTLE: 1200 TRADING MODERATE. COMPARED WITH LAST MONDAY SLAUGHTER STEERS STEADY TO WEAK, HEIFERS WEAK TO .50 LOWER. COWS AND BULLS FIRM. SUPPLY MAINLY SELECT TO AVERAGE CHOICE SLAUGHTER STEERS AND HEIFERS WITH ABOUT 10% COWS.

SLAUGHTER STEERS: CHOICE 2-4 1050-1250 LBS. 67.00-69.00 ONE LOAD 70.00 3-4, FEW 5 1150-2450 LBS. 64.00-67.00 MIXED SELECT & CHOICE 2-3 1000-1300 LBS. 65.00-68.00 SELECT

2-3 950-1200 LBS. 62.00-65.00  
HOLSTEIN STEERS CHOICE 2-3 1050-1300 LBS. 60.00-61.00 FEW 62.00-63.00 SELECT 2-3 1050-1250 LBS. 57.00-60.00  
SLAUGHTER HEIFERS: CHOICE 2-4 950-1200 LBS. 67.00-68.00, FEW 68.00-69.00 ONE LOAD 69.50 3-4, FEW 5 1000-1250 LBS. 62.50-66.00 MIXED SELECT & CHOICE 2-3 900-1150 LBS. 64.00-67.50 SELECT 2-3 800-1100 LBS 61.00-64.00  
COWS: BREAKING UTILITY & COMMERCIAL 2-4 39.00-42.00 CUTTER & BONING UTILITY 2-3 41.00-45.00 FEW HIGH DRESSING 46.00-47.00 CANNER & LOW DRESSING CUTTER 1-2 34.00-39.00  
BULLS: YG 1-2 1150-2000 LBS 53.00-62.00  
CATTLE 214  
AB 68.00-70.00 AC 64.00-67.00 AE 67.00-70.00 AF 64.00-67.00 AI 62.00-64.00 AJ 63.00-65.00 BA 67.50-69.50 BB 63.50-66.00 BC 67.00-69.50 BD 63.50-66.00 BF 61.00-63.00 BG 62.00-64.00 BK 39.00-40.00 BL 40.00-42.00 BM 41.00-47.00 BN 36.00-39.00 BO 32.00-36.00 BQ 53.00-62.00 BS 53.00-62.00

**SMOKER, LANDIS & COMPANY**

Certified Public Accountants

- Individual, Partnership & Corporate Taxes
- Accounting
- Tax Planning
- Auditing
- Management Consulting
- Personal Financial Services
- Computer & Consulting Services
- Payroll Preparation
- Retirement Plans

49 East Main Street, Leola

656-7544 or 392-1333

37 Market Square, Manheim

665-5979 or 393-1929



**Notice of Time Change (Hay Sale)**

Starting Jan. 1, 1992 (New Year's Day)

Hay And Straw Sales Will Start At 10 A.M. Every Wed.

**GOOD'S AUCTION**

111 North Maple Ave.

Leola, PA 17540

717-656-8911

717-656-9554

**HORSE SALE  
JAN. 3, 1992  
10:00 A.M.**

**NEW HOLLAND SALES STABLES INC.  
THE ACTION AUCTION**

**HORSE SALE  
JAN. 3, 1992  
10:00 A.M.**

LIVESTOCK IS OUR ONLY BUSINESS

**MONDAY**

**SLAUGHTER HOGS**



**EARLY BIRD HOG SALE  
8:00 A.M.**

Sell Your Hogs At New Holland Sales Stables, Inc. See them weighed, sold and pickup your check.

**10:00 AM**



**HORSES  
MULES**

**1:30 PM**

**BEEF SALE**



**SHEEP  
GOATS  
CALVES**

**WEDNESDAY**

**HEIFER SALE  
11:00 AM**

**COW SALE 12:00 NOON**



We have the usual run of 50 to 100 Heifers, all ages. Loads of fresh cows and springers from our regular shippers. Also some local fresh cows and springers.

**1:30 P.M.  
FEEDER PIG SALE**



Pigs are accepted after 6:30 A.M. State graded from 8 to 12 Dairy Barn and Feeder Pig Barn are cleaned and disinfected weekly for your protection.

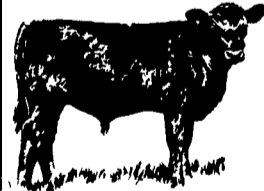
**THURSDAY**

**Beef Auction  
10:00 A.M.**

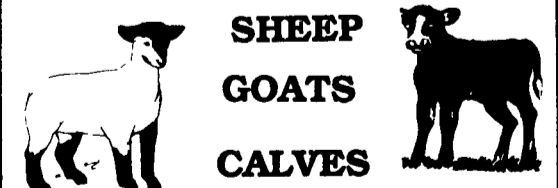
**BULLS  
STEERS  
BEEF COWS**



**1:00 P.M.  
STOCKERS  
&  
FEEDERS**



**12:00 NOON**



**SHEEP  
GOATS  
CALVES**

**NEW HOLLAND SALES STABLES, INC.**

12 Miles East of Lancaster Off Route 23, New Holland, Penna.

**MANAGERS**

Norman & David Kolb - 717-397-5538

**Field Representatives**

Luke Eberly - 215-267-6608 738-1865

Homer Eberly - 215-267-3047

Ron Ranck - 717-656-9849

**Sale Barn Office Manager  
Roger Floyd - 717-354-4341  
FAX # 717-355-0706**

**Order Buyer  
Paul Good - 215-445-6662**