

Chemical, Sight Analyses Determine Forage Quality

(Continued from Page A1)

(NDF), net energy lactation (NE), acid detergent fiber nitrogen (ADF-N), and other factors are included, according to the researchers.

But there is a definite correlation between higher RFV and the price of hay, said Chase.

But if there's any kind of "magic formula" for obtaining optimum production from forages for dairy producers, it falls in the range of a high-quality forage in addition to a 54 percent grain. But producers must be careful to look closely at what the livestock needs are, which differ, especially between a dry cow and a cow in early lactation. The forage must be adjusted appropriately for the animal's needs.

How to obtain the higher quality forage depends on the soil conditions, the environment, and the quality of nutrients. Manure qual-

ity depends on the composition of ration fed, ration digestibility, amount of bedding and water added, method of manure storage and application, method of timing and land application, characteristics of the soil and crop, and the climate.

According to a Netherlands study, Chase said, about 17 percent of nitrogen brought onto the farm as feed or fertilizer left the farm as animal products. Approximately 83 percent of the nitrogen stays on the farm.

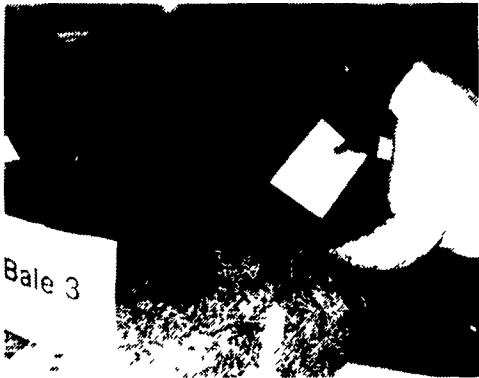
In a Klausner, N.Y. study, 70 to 80 percent of the nitrogen in the cattle's feeder ends up in the livestock gutter, according to Chase.

"Manure should be handled with good stewardship and with a high degree of concern," said Chase.

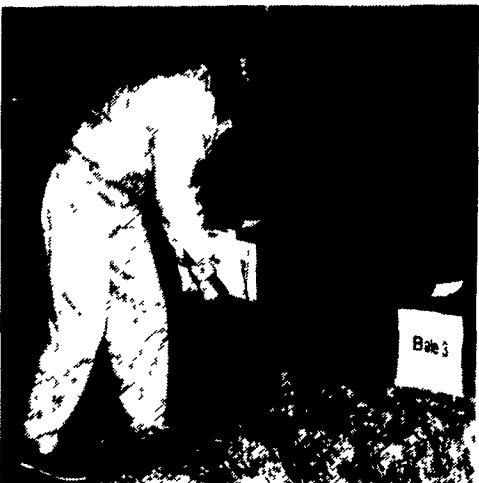
Farmers can affect production by improving the quality of forage. But those factors are determined



PFGC officers include John Baylor, past president; Tom Calvert, president; Mark Gayman, vice president; Richard Hann, secretary-treasurer; and Marvin Hall, executive vice president.



Mel Martin, a Juniata Co. farmer, examines a bale of alfalfa hay at the forage conference. The alfalfa bales were supplied by Heidel Hollow Farms in Germansville.



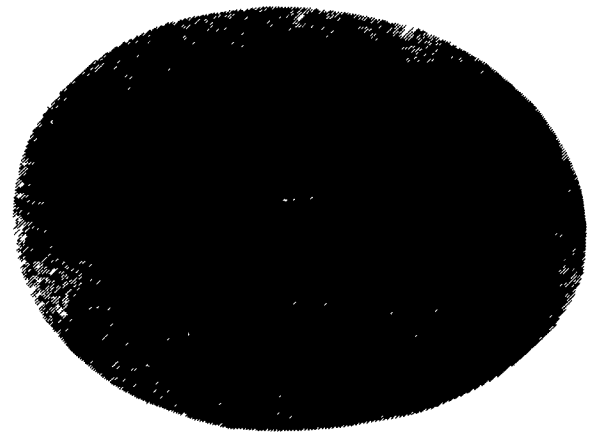
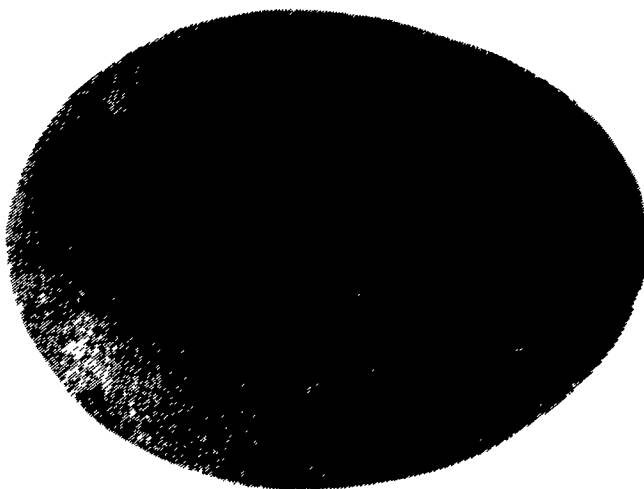
Leland Miller, Brubaker Consulting, casts his ballot for the highest quality bale of hay at the annual forage conference in Lancaster.



The PFGC Forage/Conservation Producer Award went to Leslie Stottle, Juniata Co., left, presented by John Baylor.



The Research/Extension/Teaching Award went to Gary Sheppard, Westmoreland Co., right, at the forage conference in Lancaster this week. John Baylor presented the award.



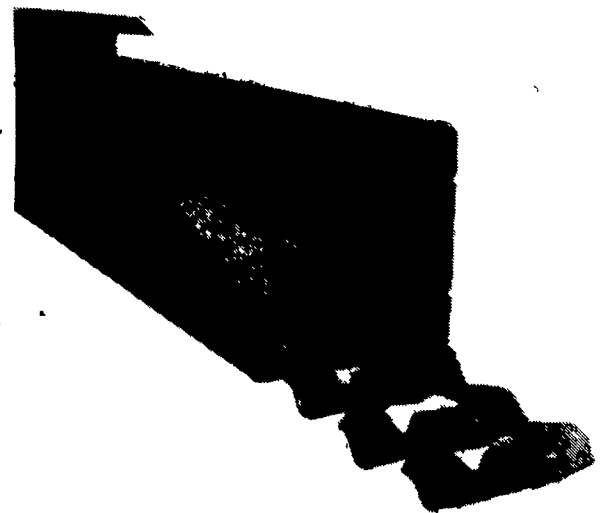
OUTPUT DEPENDS ON INPUT

Are your layers getting the full amount of feed needed for peak production? Are they giving top performance during the entire laying cycle? Don't be fooled by different feeding systems that

could come up short on delivery. Go with the system that has proven itself year after year. Go with the Big Dutchman Chain Feeding System.



Big Dutchman®



We Take Customer Satisfaction Personally