

Greencastle Livestock

Greencastle, Pa.

Monday, Nov. 18, 1991

SLAUGHTER CATTLE RECEIPTS: 441 HEAD.

SLAUGHTER STEERS: 90 HEAD. TREND 1.00 TO 2.00 HIGHER. HIGH CHOICE AND PRIME 2-4 68.00-71.00; CHOICE 2-3 95.00-107.50; CHOICE 2-3 107.5-137.5 LBS. 65.00-68.50; CHOICE 2-3 OVER 1375 LBS. 60.00-66.75; CHOICE 4 ALL WEIGHTS 53.00-61.50; SELECT & CHOICE 1-2 95.00-110.00 LBS. 61.00-66.50; SELECT & CHOICE 1-2 1100-1375 LBS. 60.00-66.50; SELECT & CHOICE 1-2 OVER 1375 LBS. 56.00-62.50.

HOLSTEINS: CHOICE 2-3 1050-1450 LBS. 59.00-62.75; SELECT 1-2 1050-1450 LBS. 54.00-58.50.

SLAUGHTER HEIFERS: 36 HD. TREND: 1.00 TO 2.00 HIGHER. CHOICE 2-3 850-1000 LBS. 60.00-65.75; CHOICE 2-3 1000-1250 LBS. 63.00-68.00; CHOICE 4 ALL WEIGHTS 60.00-64.00; SELECT & CHOICE 1-2 850-1000 LBS. 60.00-63.50; SELECT & CHOICE 1-2 1000-1250 LBS. 61.00-66.00.

HOLSTEINS: CHOICE 2-3 1000-1350 LBS. 55.50-61.75; SELECT & CHOICE 1-2 1000-1350 LBS. 50.00-55.00.

SLAUGHTER BULLS: 31 HD. TREND: STEADY. YIELD GRADE 1 ALL WEIGHTS 60.00-68.00; YIELD GRADE 2 ALL WEIGHTS 56.00-60.00.

BULLOCKS: 6 HD. SELECT 1-2 950-1250 LBS. 63.00-67.50.

COWS: 278 HD. TREND: STEADY. BREAKING UTILITY & COMMERCIAL 45.00-48.50; CUTTER & BONING UTILITY 46.00-52.00; CANNER & LOW CUTTER 45.00 & DOWN.

STOCKER & FEEDER CATTLE RECEIPTS: 211 HD. TREND: WEAKER. BEEF TYPES: 200-400 LBS. STEERS 75.00-99.00, BULLS 70.00-92.00, HEIFERS 65.00-79.00; 400-600 LBS. STEERS 65.00-80.00, BULLS 60.00-74.00, HEIFERS 65.00-77.00; 600-800 LBS. STEERS 65.00-76.00, BULLS 55.00-65.50, HEIFERS 60.00-72.00; 800-975 LBS. STEERS 60.00-70.00, BULLS 50.00-61.00, HEIFERS 60.00-64.00.

HOLSTEINS & DAIRY CROSS: 200-400 LBS. STEERS 60.00-75.00, BULLS 59.00-70.00, HEIFERS 80.00-107.00; 400-600 LBS. STEERS 55.00-67.00, BULLS 54.00-61.00, HEIFERS 65.00-75.00; 600-800 LBS. STEERS 54.00-65.00, BULLS 50.00-59.00, HEIFERS 60.00-67.00, 800-975 LBS. STEERS 51.00-61.00, BULLS 45.00-54.00, HEIFERS 54.00-60.00.

CALVES: 595 HD. TREND: STEADY. CHOICE 150-300 LBS. UP TO 104.00;

GOOD 150-300 LBS. UP TO 95.00; GOOD 100-150 LBS. UP TO 90.00; GOOD 80-100 LBS. UP TO 75.00; STANDARD 80-100 LBS. UP TO 70.00; STANDARD 80 LBS. AND DOWN UP TO 65.00.

CALVES RETURNING TO THE FARM: TREND: STEADY. HOLSTEIN BULLS OVER 100 LBS. UP TO 160; UNDER 100 LBS. UP TO 155.00; HOLSTEIN HEIFERS OVER 100 LBS. UP TO 175.00; UNDER 100 LBS. UP TO 140.00; BEEF TYPE BULLS OVER 90 LBS. UP TO 165.00; BEEF TYPE HEIFERS OVER 90 LBS. UP TO 130.00.

SHEEP & LAMBS: 90 HD. LAMBS: TREND: STEADY TO 3.00 LOWER. CHOICE 80-100 LBS. 40.00-45.00; 100-120 LBS. 40.00-41.50; 120 & OVER LBS. 34.00-38.00; MEDIUM & GOOD ALL WEIGHTS 35.00-43.00; FEEDER LAMBS 60-85 LBS. 43.00-47.00; LIGHT LAMBS 50.00-65.00; CULL LAMBS 35.00 & DOWN.

SHEEP: EWES LEAN 14.50-19.50; EWES FAT 12.00-17.00; YEARLINGS 20.00-30.00; BUCKS 13.00-18.50.

GOATS: 152 HD: SMALL 14.00-30.00; MEDIUM 29.00-54.00; LARGE 55.00-78.00.

HOGS, SOWS & BOARS: 110 HD. TREND: STEADY TO 1.00 HIGHER. 210-250 LBS. 37.00-40.00; 250-260 LBS. 37.00-38.00; 260-270 LBS. 34.00-37.00; 270-300 LBS. 34.00-36.50.

LIGHT HOGS: 140-180 LBS. 34.00-37.00; 180-210 LBS. 34.00-36.00.

SOWS: TREND: STEADY TO STRONGER. GOOD SOWS UNDER 400 LBS. 30.00-35.00; GOOD SOWS OVER 400 LBS. 30.00-34.00; CULL SOWS ALL WEIGHTS 29.00-DOWN.

BOARS: TREND: STEADY. 180-210 LBS. 30.00-32.00; 210-260 LBS. 29.00-32.00; 260-300 LBS. 27.00-30.50, 300 LBS. & OVER 22.50-25.50.

SALE EVERY MONDAY AT 2:00 P.M. & EVERY THURSDAY AT 1:00 P.M.

HAY & STRAW SALE EVERY MONDAY & THURSDAY AT 11:30 A.M.

SPECIAL FEEDER CATTLE SALE: FRIDAY, DEC. 6, 1991, AT 7:15 P.M.

SPECIAL FEEDER PIG SALE: SATURDAY, NOV. 23, 1991 AT 1:00 P.M.

Central U.S. Carlot

Beef Report

November 20, 1991

Report supplied by USDA

CENTRAL U.S. CARLOT BEEF REPORT (INCLUDES THE MAJOR PRODUCTION AREAS IN THE MIDWEST AND TEXAS) AS OF 3 P.M.

COMPARED TO TUESDAY'S 3 P.M. REPORT: CUTTER CARCASSES FIRM; BREAKING UTILITY STEADY; BONING UTILITY 2.50-3.50 HIGHER. DEMAND MODERATE FOR LIGHT OFFERINGS.

COW & BULL CARCASSES FOB OMAHA BASIS 10 LOADS REPORTED
UTBRK 2-4, 5 LOADS, RANGE 75.00, LATEST ESTB. MKT. 75.00.
UT,BNG 1-3, 400 AND UP, 3 LOADS, RANGE 80.50-81.50, LATEST ESTB. MKT. 80.50-81.50.

CUTTER 1-2 350 AND UP, 2 LOADS, RANGE 90.00, LATEST ESTB. MKT. 90.00.
BULLS 500/UP YG1, LATEST ESTB. MKT. 101.00A.

BONELESS PROCESSING BEEF/ BEEF TRIMMINGS 123 LOADS REPORTED
FRESH 90% BONELESS BEEF 1.00-3.00 HIGHER; 85% STEADY. DEMAND LIGHT TO MODERATE FOR LIGHT OFFERINGS; MOVEMENT SLOW. BEEF TRIMMINGS STEADY TO WEAK ON PRE-HOLIDAY TRADING WITH LIGHT TO MODERATE DEMAND AND OFFERINGS.

FOB OMAHA BASIS 90%FR, 7 LOADS, RANGE 128.0-130.0, WT. AVG. 129.00.
90%FZ, RANGE 130.00, WT. AVG. 130.00 C.
85%FR, 1 LOAD, RANGE 121.0, WT. AVG. 121.00.

85%FZ, UNQUOTED.
75%FR, RANGE 90.0, WT. AVG. 90.00 E.
75%FZ, RANGE 94.0, WT. AVG. 94.00 C.
65%FR, RANGE 68.0-72.0, WT. AVG. 68.80 E.

65%FZ, UNQUOTED.
50%FR, 72 LOADS, RANGE 39.00-42.00, WT. AVG. 39.85.
50%FZ, 8 LOADS, RANGE 42.00, WT. AVG. 42.00.

50%BX, UNQUOTED.
BULL 92-94, RANGE 146.0, WT. AVG. 146.00 A.

FOB EAST TX & OK 90%FR., 13 LOADS, RANGE 130.0-130.5, WT. AVG. 130.08.
90%FZ, 7 LOADS, RANGE 129.0-132.0, WT. AVG. 129.86.

85%FR, 85%FZ, 75%FR, 65%FR, 65%FZ AND 75% FZ, RANGE 94.0, WT. AVG. 94.00 C; BULL 92-94 UNQUOTED.

CAF NORTHEAST AREAS 90% FR, 12 LOADS, RANGE 129.5-130.0, WT. AVG. 129.75.
90%FZ, UNQUOTED.
85%FR, RANGE 3 LOADS, RANGE 119.0-121.0, WT. AVG. 120.00.

85%FZ, 75%FR, 75%FZ, 65%FR AND 65%FZ, ALL UNQUOTED.
**ABCDE AFTER QUOTES REPRESENTS DAYS SINCE LAST ACTUAL MARKET TEST.

Oklahoma City Feeder Cattle

Nov. 20, 1991

Receipts: this week 2612 last week 3078 last year 1181 Trends: STEER AND HEIFER CALVES UNDER 550 LB. FIRM TO \$3.00 HIGHER. STEERS OVER 550 LB. STEADY. HEIFERS OVER 550 LB. STEADY TO \$1.00 LOWER.

BULK SUPPLY 450-800 LB. STEERS AND 425-600 LB. HEIFERS TO ATTRACTIVE. YRL HEIFERS PLAIN TO AVERAGE. YRL WEIGH UPS AVERAGE TO FULL. CALF DEMAND GOOD. YRL DEMAND FAIR. Feeder Steer Large and Medium 1 # HEAD WT RANGE PRICE RANGE AVE WT. AVE PRICE 4 323 323 111.50 111.50 323 111.50 149 405 494 89.50 105.50 457 98.89 177 502 599 83.00 98.00 533 94.4 0 86 623 699 84.75 87.00 657 85.61 223 700 788 81.25 88.00 750 85.05 27 803 828 78.00 79.75 811 79.45 11 919 919 72.25 72.25 919 72.25 Feeder Heifer Large and Medium 1 13 348 363 90.00 91.00 355 90.23 111 426 496 84.50 93.50 447 89.47 134 503 598 80.00 87.50 528 84.91 45 600 698 77.50 81.50 638 80.64 27 705 754 75.50 78.50 730 76.46 42 800 887 70.00 75.00 827 72.06

MEDIUM AND LARGE FRAME NO. 1 MUSCLED CATTLE COMPRISED ** 40% **OF RUN.

THIS REPORT PREPARED AND COMPILED BY THE OKLAHOMA CITY LIVESTOCK MARKET NEWS BRANCH OF THE USDA'S AGRICULTURE MARKET NEWS SERVICE. ROBERT MILES - IN CHARGE - TELEPHONE (405) 232-5425.

Friend's Stockyard Inc.

Accident, Md. 21520

November 18, 1991

STOCK BULLS AND STEERS (200-500 LBS.) 70.00-98.00.
STOCK HEIFERS 60.00-82.00.
SLAUGHTER STEERS GOOD TO CHOICE 64.00-68.50; MEDIUM TO GOOD 60.00-63.50; HEAVY CHOICE OVER 1450 LBS. 60.00-63.00.

HOLSTEIN STEERS HEAVY 55.00-60.00; LIGHT 50.00-62.00.
SLAUGHTER HEIFERS GOOD TO CHOICE 62.00-66.00; MEDIUM TO GOOD 55.00-61.75.
BULLS HEAVY 55.00-61.00; LIGHT 52.00-58.50.
COWS FEW HIGH DRESSING 47.00-49.00; UTILITY HOLSTEIN

44.50-47.25, CANNERS 40.00-45.50, COMMERCIAL TO GOOD 40.00-44.00, CULL COWS 39.00 AND DOWN.
VEALS GOOD TO CHOICE 80.00-92.00, MEDIUM TO GOOD 70.00-78.00.

BOB CALVES 65.00 AND DOWN. HOLSTEIN BULL CALVES, RETURN TO FARM (90-120 LBS.), 110.00-155.00. HOLSTEIN HEIFER CALVES, RETURN TO FARM (100-120 LBS.) 100.00-180.00.

HOGS TOP QUALITY 38.00-41.25, HEAVY 37.00-40.00, LIGHT 35.00-37.00.
SOWS 30.00-37.00.
MALE HOGS: 26.00-30.00.
LAMBS: 41.00-47.00.
EGGS: LARGE .90-.94, MEDIUM .60-.66 AND SMALL .30-.38.
LIVESTOCK PRICES ARE ALL GIVEN PER HUNDREDWEIGHT!

Delmarva Broiler/Fryer Market

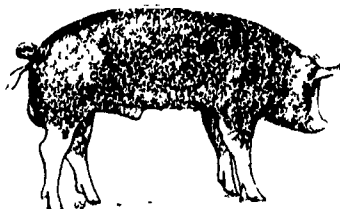
Wednesday, November 20, 1991

Movement of ready-to-cook broiler fryers was seasonally light. Offerings were adequate to fully adequate with some reports of increasingly competitive pricing in an attempt to stimulate buying interest. Less-than-trucklot asking prices were unchanged at 49-60 cents. Live supplies were light to adequate. Average live weights were mostly desirable. Processing schedules were very light. Trade sentiment was barely steady to instances weak.

ESTIMATED SLAUGHTER OF BROILER/FRYERS IN DELMARVA (000)

ESTIMATED ACTUAL AVG. WEIGHT ACTUAL AVG. WEIGHT 11/20 11/18 11/18 11/13 11/11 1,518 1,472 4.45 1,915 4.78.

BROILER/FRYER CURRENT NEGOTIATED PRICES FOR IMMEDIATE DELIVERY INCLUDES MOSTLY MULTIPLE-DROP SHIPMENTS OF BRANDED AND WING TAGGED TO NEW YORK CITY FROM DELMARVA BRANDED U.S. GRADE A RANGE 46-60 WEIGHTED AVERAGE 52.96 NO. OF BOXES 9,292.



High Yield Investments.

N8727 RM: 118-122

As a full season hybrid, this variety is a "must plant". An outstanding yielder, it also has superior standability and is excellent for full season grain or silage. N8727 features a flex ear that adapts well to variable densities, plus very good ear retention and husk cover. Outstanding test weight, too. If you're going all out for full season yields, this hybrid belongs on the top of your list. Not tolerant to virus complex. This hybrid had highest yield in a 90-91 P.S.U. trials at 191 bu/acre.

N6330 RM: 108-112.

If you're looking for a very high yielding hybrid that performs well as medium-to-low populations, put this one on the top of your list. This corn has a superior performance records on coars to medium textured soils and exceptional drought stress tolerance. It has a flex ear that adapts well to lower populations. Recommended for timely harvest.



To get the most from your corn dollar, you can't beat Northrup King hybrids. They consistently come on strong and deliver top yields, even under tough growing conditions. And Northrup King has a selection of hybrids to match your soil type and management practices. So this year, go with seed corn you can really put stock in. Northrup King hybrids.

Because You're In Business To Grow Northrup King

- | | | | | | | | |
|---|--|---|--|--|---|--|--|
| BROOKLAND MILLS, INC. McVeytown, PA 17051 (717) 899-6772 | GORDON ISENBERG Alexandria, PA 16611 (814) 649-9323 | SCOTT V SHIPMAN Turbotville, PA 17772 (717) 649-6133 | WAYNE FEED SUPPLY Chambersburg, PA 17201 (717) 263-4121 | JOHN C SNOOK Mifflinburg, PA 17844-9552 (717) 966-0957 | BRUCE B. GAMBLE & SONS Concord, PA 17217 (717) 349-2670 | LEON OBERHOLTZER East Earl, PA 17519 (717) 364-0832 | J RICHARD BOMBERGER Lebanon, PA 17042 (717) 949-3442 |
| DILLERS FEED & SUPPLY Grantville, PA 17028-9650 (717) 846-0910 | RICHARD H. KAUFFMAN Columbia, PA 17512 (717) 684-2483 | STEPHEN J. SNYDER Elizabethville, PA 17023 (717) 362-8735 | WAYNE FEED SUPPLY Dillsburg, PA 17019 (717) 432-9623 | WALNUT BARN & DAIRY EQUIPMENT Port Royal, PA 17082 (717) 436-9429 | ELWOOD HARER Montgomery, PA 17352 (717) 547-6133 | RHOADS MILLS INC. Selingsgrove, PA 17870 (717) 374-8141 | THE AGRONOMY CENTER Thompsontown, PA 17094 (717) 636-6161 |
| HAKES FARM & SEED SERVICE Red Lion, PA 17356 (717) 244-2754 | LARRY & GARY MENSINGER Nescopeck, PA (717) 379-3264 | SOMERSET MILLING CO. Somerset, PA 15501 (814) 446-7604 | RALPH MILLER Womelsdorf, PA 19567 (216) 589-2642 | BEDFORD FARM BUREAU Bedford, PA 15522 (814) 623-6194 | JOHN D. CASSEL & SONS, INC. Hummelstown, PA 17036 (717) 546-8022 | TWIN FIR FARM Centre Hall, PA 16828 (814) 364-9270 | LYN-LEE FARMS State College, PA 16801 (814) 238-1233 |
| HORACE HEINDEL & SON York, PA 17402 (717) 244-3780 | GENE MILLER Catawissa, PA 17820 (717) 799-6760 | WARRIORS MARK FEED CENTER Warriors Mark, PA 16877 (814) 632-6490 | CAROVAIL INC. Gettysburg, PA 17325-0249 (717) 334-2104 | LARRY BOWER Uden, PA 17424 (717) 323-3646 | KNISELY'S AG CENTER, INC. Carlisle, PA 17013 (717) 243-2233 | KENNETH E ZURIN Mt Joy, PA 17552 (717) 898-8736 | CYRIL SHAFFER Dalmatia, PA 17017 (717) 758-6345 |