

Lancaster Co. Livestock Market Auctions

Lancaster Livestock Auction

NOVEMBER 19, 1991
CATTLE Calves Hogs Sheep Goats
MONDAY'S AUCTION
 807 90 258 1687 527
LAST MONDAY'S AUCTION
 791 93 126 1026 296
LAST YEAR'S AUCTION
 960 90 298 799 273

CATTLE: Slaughter steers steady; slaughter heifers steady to weak; cows steady; bullocks scarce; bulls 1.00-1.50 lower. Supply included 35% slaughter steers, 26% slaughter heifers, 27% cows, and 12% bulls.

SLAUGHTER STEERS: Choice 2-4 1050-1375 lb 67.25-69.60; Choice 2-3 1075-1300 lb 70.00-71.00, couple 71.25-72.00; Choice 3-4 1220-1500 lb 62.25-66.25; Select and low Choice 2-3 1050-1425 lb 62.75-66.75.

HOLSTEINS: Choice 1300-1600 lb 59.00-62.00; Select 1300-1600 lb 57.00-59.50.

SLAUGHTER HEIFERS: Choice 2-3 950-1300 lb 63.75-67.50; few Choice 2 1050-1200 lb 67.50-68.25; Choice 2-3 885-950 lb 60.00-63.00; Choice 3 to mostly 4 1100-1350 lb 55.75-61.00; Select 2-3 950-1150 lb 59.00-63.00.

COWS: LO DRESSING BULK HI DRESSING Breaking Utility & Commercial 2-3 46.00-49.00 Few 49.75-53.75 Commercial 3-4 43.00-47.50 Cutter & Boning Utility 1-2 43.00-45.00 45.00-48.50 48.50-49.00 Canner & low Cutter 39.50-41.50 41.50-43.00

BULLOCKS: Few Choice 2-3 1100-1350 lb 68.50-69.25.

BULLS: Yield grade 1 1400-2000 lb 61.75-66.00, six head 67.75-71.00; Yield grade 2 1050-1600 lb 58.00-63.00, few low dressing 55.00-58.00.

CALVES: Vealers steady; slaughter calves steady, instances 5.00 higher. Demand good for Holstein bulls to return to farm.

VEALERS: Choice 180-300 lb 90.00-105.00; couple High Choice and Prime 220-300 lb 110.00-125.00; high Good and low Choice 170-300 lb 75.00-90.00, 80-110 lb 64.00-75.00; Standard and low Good 60-85 lb 60.00-65.00.

SLAUGHTER CALVES: Good and Choice 300-450 lb 60.00-75.00, few Choice 75.00-85.00.**

RETURNED TO FARM: Bulk 90-125 lb Holstein bulls 115.00-140.00.

HOGS: Barrows and gilts fully steady; sows weak to 50 lower.

BARROWS AND GILTS: US 1-2 210-245 lb 40.25-41.50. US 1 few 215-240 lb 41.50-42.00. US 1-3 210-250 lb 39.50-40.00

SOWS: US 1-3 300-500 lb 27.00-30.00, 500-650 lb 30.00-32.50

BOARS: All weights 24.50-25.50.

SHEEP: Woolled lambs 3.00-5.00 lower; slaughter ewes fully steady.

WOOLED LAMBS: Choice 70-100 lb 45.00-50.00, 50-70 lb 51.00-55.00.

NEW CROP LAMBS: Choice 30-50 lb 95.00-110.00, few 110.00-125.00.

Vintage Livestock Auction

Paradise, Pa.
Tuesday, November 19, 1991
Report Supplied by USDA

CATTLE 785...USDA... Supply included 31% slaughter steers and 52% cows ... Compared with Monday's market: Slaughter steers .50 to fully 1.00 higher; Heifers fully steady; Cows firm, instances 1.00 higher; Bullocks not tested; Bulls steady. Choice 2-4, 1150/1425 lbs. slaughter steers 67.50-70.25, few 70.50-72, Choice & Prime 2-3 1075/1375 lbs. 71-72.75, 12 head 73-74.25, Choice mostly 3, 1475/1600 lbs. 64.00-68, 3 mostly 4, 1250/1475 lbs. 62.00-67, Select & Low Choice 2-3, 1075/1425 lbs. 62.00-68.00; Choice Holsteins 1195/1600 lbs. 59.50-61.85, couple High Choice & Prime 1300/1460 lbs. 62.60-62.75. Choice 2-3, 1000/1250 lbs. sl. heifers 64.75-65.25, couple Choice 1080/1200 lbs. 68.50-69, 3-4, 995/1300 lbs. 64.00-69.00, Select 2-3, 950/1050 lbs. 62.00-65.00. Breaking Utility & Commercial cows 2-3, 46.00-49.50, high dressing 50.00-52.50, couple 53&55.75, Cutter & Boning Utility 1-2, 45.50-49, high dressing 49.00-51.50, low dressing 42.75-45.50, Canner & Low Cutter 42.00-45.00, low dressing 40.50-42.00. Yield Grade No. 1, 1800/2310 lbs. sl. bulls 60.75-63.25, No. 2, 1300/2120 lbs. 54.75-60.75. Lot Medium Frame No. 1, 1020 lbs. steers 76.00, lot Small and Medium #1, 965 lbs. 74.25, few Medium #1, 1050/1125 lbs. with Select and low Choice (slaughter finish) 67.75-69.75.

CALVES 1010... Supply included 710 in graded sale of which 91% sold to return to farm ... Vealers steady. High Good and low Choice 150/260 lbs. 73.00-83.00, one Choice 250 lbs. 106.00, High Good and low Choice 80/115 lbs. 60.00-68.00, Standard and low Good 70/90 lbs. 40.00-55.00. Farm Calves: No. 1, Holstein Bulls 120/125 lbs. 140.00-141, 100/115 lbs. 147.00-154.00, 95 lbs. 157.00-160.00, 85/90 lbs. 128.00-139.00, Small frame 95/115 lbs. 120.00-130.00, 90/95 lbs. 100.00, 80/85 lbs. 69.00-70.00; Hol. Heifers 100/120 lbs. 173.00-177.00, 90/95 lbs. 142.00, Small frame 100/110 lbs. 128.00, 70/95 lbs. 62.00-82.00.

SHEEP 8...No market test - all per cwt.
GOATS 3...No market test - all per head.

SLAUGHTER EWES: Utility and Good 18.00-30.00; Yearlings and two-year olds 25.00-35.00.

GOATS: All goats sold by the head. Large 75.00-90.00, few Billies 100.00-115.00, Thin 50.00-70.00 Medium 35.00-50.00. Small, mainly kids, 20.00-40.00

Lancaster Livestock Auction

Wednesday's market report has been discontinued until further notice because of insubstantial receipts.

Jersey Shore Livestock Market, Inc.

Auction every Thursday at 4:00 p.m.
Jersey Shore, Pa.
Report supplied by Auction
Thursday, Nov. 21, 1991

RETURN TO FARM CALF 1.00-1.70.
GOOD VEAL: 70.00-110.00.
COMMON VEAL: 40.00-69.00.
CHOICE STEERS: 64.00-69.00.
SELECT STEERS: 59.00-65.00.
COMMON STEERS: 55.00-58.00.
COMMERCIAL COWS: 45.00-53.00.
CANNERS-CUTTERS: 42.00-50.00.
SHELLS: 25.00-41.00.
CHOICE HEIFERS: 64.00-68.00.
SELECT HEIFERS: 60.00-63.00.
COMMON HEIFERS: 55.00-59.00.
GOOD FEEDERS: 65.00-80.00.
COMMON FEEDERS: 47.00-64.00.
BULLS: 54.00-61.50.
GOOD HOGS: 37.00-40.50.

Penns Valley Livestock Market, Inc.

Auction every Tues. 7 p.m.
Centre Hall, Pa.
Report supplied by Auction
Tues., Nov. 19, 1991

RETURN TO FARM CALF 100.00-150.00
GOOD VEAL: 70.00-99.00.
COMMON VEAL: 35.00-69.00.
CHOICE STEERS: 65.00-66.50.
SELECT STEERS: 60.00-64.00.
COMMON STEERS: 54.00-59.00.
COMMERCIAL COWS: 43.00-48.00.
CANNERS-CUTTERS: 39.00-49.50.
SHELLS: 30.00-38.00.
SELECT HEIFERS: 58.00-62.00.
COMMON HEIFERS: 45.00-57.00.
COMMON FEEDERS: 42.00-70.00.
BULLS: 51.00-62.00.
GOOD HOGS: 37.00-40.00.

New Holland Livestock Auction

Lancaster, Pa.
Thursday, November 21, 1991
Cattle Calves Sheep Goats

Today	998	723	156	103
Last Thursday	1232	741	85	78
Last Year				

Thanksgiving Holiday

CATTLE: Slaughter steers mostly steady, although continued pressure on yield grade 3-5; slaughter heifers scarce; cows 1.00-2.00 higher; bullocks not tested; bulls steady. Supply includes 48% slaughter steers and 40% cows.

SLAUGHTER STEERS: Choice 2-3 few 4 1075-1450 lb 67.25-70.50, few lots mostly 3 70.50-72.10; Choice and Prime 2-3 1100-1425 lb 70.50-73.00, couple 73.00-73.50; Choice mostly 3 1450-1670 lb 63.50-67.00; Choice 3-4 1200-1450 lb 61.75-67.50, 4-5 1275-1500 lb 58.00-61.00, few 1500-1700 lb 53.50-58.00; Select and low Choice 2-3 1100-1425 lb 63.00-67.00.

HOLSTEINS: Choice 1224-1470 lb 59.10-60.25; Select 1180-1350 lb 56.00-59.00.

SLAUGHTER HEIFERS: Few Choice 3-4 1200-1575 lb 60.00-64.50; couple Choice 2 1210-1370 lb 67.00-68.00.

COWS: LO DRESSING BULK HI DRESSING Breaking Utility & Commercial 2-3 47.75-52.00 52.00-53.50. Commercial 3-4 44.00-47.75. Cutter & Boning Utility 1-2 44.00-46.00 46.00-50.00 50.00-52.50. Canner and low Cutter 40.00-42.50 42.50-45.50.

BULLS: Yield grade 1 1150-1800 lb 62.00-64.00, individual 1800 lb 66.50; Yield grade 2 1000-1550 lb 58.00-62.00.

CALVES: Vealers steady, instances 5.00 lower on Choice. Demand good for Holstein bulls and heifers to return to farm.

VEALERS: Few Choice 200-380 lb 85.00-98.00; couple high Choice 315-345 lb 104.00; high Good and low Choice 150-410 lb 64.00-85.00, 80-110 lb 63.00-71.00, couple 71.00-75.00; Standard and low Good 60-85 lb 55.00-64.00.

RETURNED TO FARM: Bulk 95-125 lb Holstein Bulls 130.00-160.00, few 160.00-166.00; small frame 95-115 lb 100.00-130.00, 80-95 lb 72.00-105.00; bulk 95-115 lb Holstein heifers 130.00-162.00; small frame 80-110 lb 80.00-115.00.

SHEEP: Woolled lambs and slaughter ewes steady to 3.00 lower.

WOOLED LAMBS: Choice 75-100 lb 42.00-51.00, 50-70 lb 76.00-82.00, few 30-55 lb New Crop Lambs 88.00-106.00, eight head 114.00-116.00; Good to low Choice 70-100 lb 35.00-42.00.

SLAUGHTER EWES: Utility and Good 14.00-22.00, few 10.00-14.00; few Yearlings and two-year 24.00-35.00.

GOATS: All goats sold by the head. Large 64.00-86.00, few 88.00-98.00, and a couple 100.00-108.00; Medium 37.00-60.00; few Small 31.00-37.00.

Lancaster County Weekly

Lancaster, Pa.
Friday, November 22, 1991
Cattle Calves

This Week	3200	1910
Last Week	3222	1743
Last Year	1959	1038

CATTLE: Slaughter steers 50-1.00 higher, with continued pressure on yield grade 3-5; slaughter heifers steady; cows 1.00-2.00 higher, instances 3.00 higher; bullocks scarce; bulls 1.00-1.50 lower. Supply included 32% slaughter steers, 9% slaughter heifers, 32% cows, 5% bulls, with the balance feeders.

SLAUGHTER STEERS: Choice 2-4 1050-1450 lb 67.25-70.50, few lots mostly 3 70.50-72.10; Choice and Prime 2-3 1075-1425 lb 70.50-73.00, couple 73.00-74.25; Choice mostly 3 1450-1670 lb 63.50-68.00; Choice 3 to mostly 4 1200-1475 lb 61.75-67.50, 4-5 1275-1500 lb 58.00-61.00, few 1500-1700 lb 53.50-58.00; Select and low Choice 2-3 1075-1425 lb 62.00-67.00.

HOLSTEINS: Choice 1195-1600 lb 59.00-62.00; couple High Choice and Prime 1300-1460 lb 62.60-62.75; Select 1180-1600 lb 56.00-59.50.

SLAUGHTER HEIFERS: Choice 2-3 950-1300 lb 63.75-67.50; few Choice 2 1050-1370 lb 67.00-69.00; Choice 2-3 885-950 lb 60.00-63.00; Choice 3 to mostly 4 1100-1350 lb 55.75-61.00; Select 2-3 950-1150 lb 59.00-64.00.

COWS: LOW DRESSING BULK HIGH DRESSING Breaking Utility & Commercial 2-3 47.00-52.00 52.00-53.75. Commercial 3-4 43.00-47.50. Cutter and Boning Utility 1-2 43.00-46.00 46.00-50.00 50.00-52.50. Canner and low Cutter 39.50-42.50 42.50-45.50.

BULLOCKS: Few Choice 2-3 1100-1350 lb 68.50-69.25.

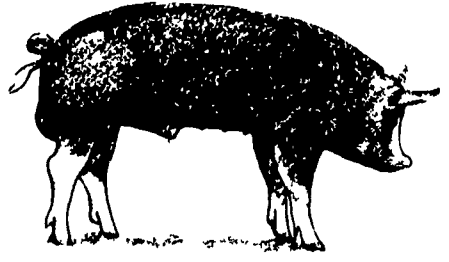
BULLS: Yield grade 1 1300-2300 lb 61.75-66.00, eight head 66.50-71.00; Yield grade 2 1050-2100 lb 58.00-63.00, few low dressing 55.00-58.00.

CALVES: Vealers steady, instances 5.00 lower on Choice; slaughter calves steady, instances 5.00 higher. Demand good for Holstein bulls and heifers to return to farm.

VEALERS: Choice 180-380 lb 85.00-98.00; couple High Choice and Prime 220-345 lb 104.00-125.00; high Good and low Choice 150-410 lb 64.00-85.00, 80-110 lb 60.00-71.00, couple 71.00-75.00; Standard and low Good 60-85 lb 40.00-64.00.

SLAUGHTER CALVES: Good and Choice 300-450 lb 60.00-75.00, few Choice 75.00-85.00.

RETURNED TO FARM: Bulk 95-125 lb Holstein bulls 130.00-160.00, few 160.00-165.00; small frame 95-115 lb 100.00-130.00, 80-95 lb 69.00-105.00. Bulk 95-115 lb Holstein heifers 130.00-162.00, 25 head 173.00-177.00, small frame 80-110 lb 82.00-115.00.



LEBANON VALLEY LIVESTOCK MARKET, INC.
 1 mile East of Fredericksburg along Rt. 22
PHONE JONESTOWN 865-2881
 Flea Market Auction every Tuesday at 12:30. Tools, Eggs, Produce, etc.
 Buyers & Sellers Welcome

LANCASTER STOCK YARDS
Open 24 hours a day
365 days a year
(717)394-2611

AUCTIONS

MONDAY
 9:00 A.M. - Slaughter Bulls, Heifers, Steers, Cows
 10:00 A.M. - Goats, Veal Calves, Lambs
 12 Noon - Slaughter Hogs

WEDNESDAY
 8:00 A.M. - Slaughter Hogs
 10:00 A.M. - Slaughter Bulls, Heifers, Steers, Cows
 11:00 A.M. - Veal Calves, Lambs

FRIDAY
 11:00 A.M. - Stocker and Feeder Cattle

SATURDAY
 8:00 A.M. - Slaughter Hogs

Next Graded Feeder Cattle Sale
Friday, Nov. 29 - 11:00 A.M.

LANCASTER STOCKYARDS, INC.
 1147 Litz Pike, Lancaster, Pennsylvania 17601
 Serving The Community For 96 Years

VINTAGE SALES STABLES, INC.

TUESDAY

11:00 A.M.
SLAUGHTER CATTLE AUCTION — STEERS, BULLS, HEIFERS, COWS, FEEDER CATTLE

7:30 P.M.
CALVES, SHEEP, GOATS * GET CALVES IN EARLY — OUR STATE GRADER STARTS AT 1:00 P.M.

L. ROBERT FRAME, SR., PRESIDENT
 BUS (717) 442-4181
 BUS (717) 768-8204
HOME (215) 458-8518
IRWIN MARTIN, FIELD REP.
 (717) 733-7434
KENNETH E. HERSHEY, FIELD REP.
 (717) 442-4874

TRUCKING SERVICE AVAIL-LOCAL & LONG DISTANCE (RT. 30, 10 MILES EAST OF LANCASTER IN PARADISE, PA)

B&R CATTLE CO.
 RD 1, Marietta, PA 17547
 Office Phone: (717) 653-8164
 Specializing In Stockers & Feeders
JOHN BOWMAN
 Ph (717) 653 5728
RON RANCK
 Ph (717) 656 9849

HAY, STRAW & CORN — SALE —
 Every Friday At 11 AM

GREEN DRAGON MARKET & AUCTION
 RD No. 4 Ephrata, Pa. 717-738-1117
 1 mile North of Ephrata on N. State St.
 Out of State Buyers - Cash or Certified Check Only