

35 TRUCKS & TRAILERS

1983 Ford F350 pickup truck, 6.9 liter diesel, 4x4, standard, good condition, \$5000 OBO 301-387-7485

1986 GMC 4x4, 1/2 ton P/U, 6.2 Diesel, auto, PS, PB, air, L O Hubs, bedliner, 110 gallon fuel tank w/12V pump VGC \$7500 OBO 215-965-9707

1987 Arndt 2-Horse Custom Trailer, many extras, excellent condition Luzerne County. 717/759-2602

1987 Thayco reefer, 48'x13 6x96, titled only 16 months, Kemlite interior, stainless front and rear, c/s door, carrier Thunderbird unit, load air, aluminum Budds, nice trailer, \$20,000 (908)689-2845

1989 XLT Lariat, AC, Cru, PS, PB, toolbox, bedliner, F250, cassette, running-boards, sliding window, nice, 17,200 miles, \$11,300 Call 301 658 3564

1990 Ford F350 7.3 diesel, 5-spd -with sleeper and maintenance box excellent condition, 30,000 mi, 717/367-6935

22' Eby aluminum gooseneck cattle trailer, excellent condition Call for details 609/299-4952

40ft bucket truck F700 1979 Ford, \$3200, 1972 Ford 9000 tri axle diesel w/26ft roll bed w/winch & boom without mirrors, \$5800 717-534 12

'78 Chevy cattle trailer 12' Fty body 454 V8 engine, good condition, '92 inspection 215 285-2414

'85 Ford XL Explorer F150, super cab, short bed, 300 6 cyl, 3 spd overdrive, PS, PB, AM FM, 49,000 miles, blue & white, excellent condition, \$5,450 717 733-2873

86 Chevy G20 Cargo Van, 305 auto, PB, PS, air, AM-FM stereo, rally whls, 17,000 miles, 1 owner, excellent condition, \$7,950 717 733 2873

88 Chevy 3500, dual whl w/9 fully enclosed utility body, 454 auto, PB, PS, air, AM-FM stereo, dual tanks, 51,000 miles, excellent condition, \$9,200 717-733-2873

'88 Ford XL F250, 4x4, 351 EFI, 5 spd, PS PB, AM-FM dual tanks, 8,600 GVW, good condition, \$7,150 717-733 2873

89 Chevy 3500, dual whl w/8' Heil landscapers dump, 350, 4 spd, PS, PB, 12,000 miles, blue, excellent condition, \$12,500 717 733 2873

89 Dodge B350 Maxi Cargo Van, 318 auto, PB, PS, AM-FM stereo, 7,500 GVW, Michelin radials, excellent condition, \$8,975. 717-733-2873

FOR SALE 1989 Ford F350 diesel, 5 speed, dual wheels, 7.3 engine, 11 ft. bed and 5th wheel, 37,000 miles Also 18 by 8 aluminum gooseneck livestock trailer, excellent shape. Elk Co (814)886-8364.

FOR SALE: 750 Allison automatic w/lockup and PTO \$1,250. 453 Detroit w/5 speed, \$1,750. New 9-17.5 radials \$136. 17,000 lb. diesel truck, 2 speed rear, \$225. Hydraulic truck lift gate, \$200. (717)866-7213.

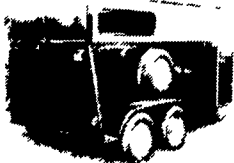
Grain Truck, 1980 GMC Brigadier, 671 DD, 13 speed, 16,000 ft., 38,000 rears, 600 bushel cap., twin cyl dump, excellent condition, \$19,500 Will take smaller truck on trade 703/872-5163

Mack tandem dump, '79, 300, 6 speed, 44 rears, aluminum body, \$15,000 (410)557-8100

1981 IH S-1800 Grain Truck, 15 ton hoist, DT466, air brakes, 5+2, 35,000 GVW. 717/867-5633.

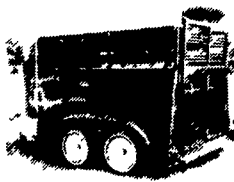
1978 Chevy triaxle dump truck, 350, Silver Detroit, 8 speed, 18' aluminum body, air lift axle, new engine, A/C, red cab \$22,000

Call George (215) 458-8167



Two Horse Bumper Pull Trailer \$3695
SALE \$3525.00 (Thoroughbred)

Two Horse Bumper Pull Trailer With Dressing Room \$5050.
SALE \$4900.00 (Thoroughbred)

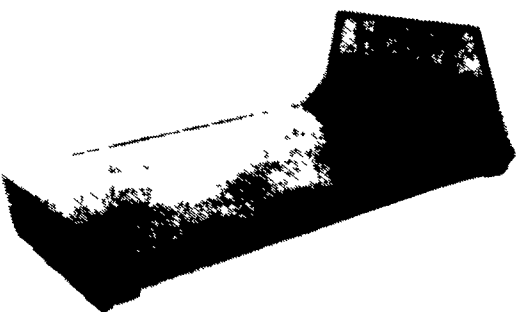


12' Stock Bumper Pull Trailer \$2940
SALE \$2600.00 (5000 GVW)

16' Stock Bumper Pull Trailer \$3255
SALE \$2750.00 (7000 GVW)

RINGO HILL FARMS EQUIPMENT CO., INC.
1624 Rt. 212, Quakertown, PA 18951
Phone: 215-346-7340 Call Or Write For Our Free Catalogue
Fax: 215-346-8041

TRUCK BODIES



Replacement Truck Beds

A complete line of heavy-duty all steel truck beds for utility or recreational purposes sizes range from 6 to 12' lengths and fit all Chevrolet GMC Ford and Dodge pickup trucks Sizes also available to fit Toyota, Nissan and other mini trucks All truck beds have bulkheads constructed from 1 1/2" square tubing, diamond plate beds, rub rails with stake pockets and a 15" deep rear end. Cutouts are provided for tail lights along with mounting plates for marker lights on each corner. All beds are primed and painted standard black.

Made in U.S.A.

LENGTH	WIDTH	RAIL WIDTH	LIST
7 Ft.	66" or 78"	34, 38 or 40"	\$575
8 1/2 Ft.	80" or 90"	34 or 38"	595
10 Ft.	90"	34 or 38"	725
11 Ft.	90"	34 or 38"	850
12 Ft.	90"	34 or 38"	960
14 Ft.	90"	34 or 38"	1050
16 Ft.	90"	34 or 38"	1200
18 Ft.	90"	34 or 38"	1400
20 Ft.	90"	34 or 38"	1600

Standard Features Include:

- Head Board Stake Pockets Rub Rails
- Diamond Plate Steel Floor or 2" Wood Floor

Installation Available

- Trailer Hitches • Body Accessories • Goose Neck Plates
- Hoists • Dump Kits • Trailer Towing Packages

RINGO HILL FARMS EQUIP. CO. INC.

1624 Rt. 212, Pleasant Valley • Quakertown, PA 18951
(215) 346-7340 FAX: (215) 346-8041

Royal Automotive TRUCK SALES & LEASING

Coopersburg, Pa. Rt. 309

Just Off I-78, Between Allentown & Quakertown

215-282-4090



1972 F600 14' Stake w/Dual Cylinder Dump, V8, 4/2 Spd, With Only 46,000 Miles, Owned & Maintained By Township Since New, No Rust, Excellent Condition \$3900 Firm



1985 Ford LN8000 18' Reefer w/Thermo King Diesel Unit, 3208 Cat Dsl, 5 Spd Trans, Ready To Go To Work \$12,900



Large Selection of Cube & Step Vans To Choose From, All Different Makes & Sizes, Priced To Your Budget



Stake Body Dumps In Good Working Condition, Priced Under \$5,000 - While They Last.



Diesel 1987 Ford E350 14' Gruman Cube Van, 6.9 Diesel, AT, PS, All New Radial Tires, Excellent Condition, Ready To Go To Work.



Very Rare 83 Chevy C-70 16' Flatbed Scissor Lift & Dump - New 427 V8, 5/2 Sp Trans, PS, 32,000 GVW, Air Bks, 43,000 Original Miles.

TWO ACRES OF ALL TYPES USED TRUCKS. "IF WE DON'T HAVE IT, WE'LL GET IT"

Our 52nd Year
INTERNATIONAL TRUCKS
Sales • Service • Parts

IVECO
Parts, Service & Warranty

SALES - LEASING
STATE INSPECTION
ASE Certified Mechanical

CENTRAL GARAGE INC.

S. 2nd St., Womelsdorf, Pa. 19567

215-589-4581

TRUCKS

Sales • Service • Parts

Cummins Service • Parts

REPAIRS - All Make Trucks And Cars

USED TRUCKS

1986 International 1654.....	20,500 GVW
1983 Mack (Jerr-Dan Rollback)	33,000 GVW
1976 International Fleetstar, Automatic.....	35,000 GVW
1978 Ford NL-600.....	19,500 GVW
1984 Dodge Ram w/12 Ft. Van Body.....	10,000 GVW
1982 International 1700.....	24,500 GVW

New Omaha 18 Ft. Grain Body!

NEW TRUCKS

1992 UD 1300, 5 Speed.....	13,000 GVW
1991 UD 1100, 5 Speed.....	11,000 GVW
1991 International 4600LP	21,440 GVW
1990 International 900.....	32,900 GVW
1990 International 700 (Only 1 Left!)	29,000 GVW

ASSORTED NEW AND USED TRUCK BODIES FOR SALE!

USED TRUCKS

70 GMC Dsl. 24' Rollback, Bed Is Newer Than Truck, Wheel Wells.

\$10,500



55 Chevy PU, 5 Wndw Cab Style, 6 Cyl., 3 Spd., Gd. Running Cond., Easy To Restore.

\$1,990



72 Fruehauf 43' Flat, Tandem Axle.

\$2,300



New Leftover 5 Ton Tag-A-Long, All Wheel Brakes, Adjustable Hitch, Adjustable Ramps, 14' Bed.

\$1,795



90 GMC Topkick, 2,000 MI., Flatbed w/Dump, Like New Cond.

\$22,000



1972 IH 34' Bucket Truck, V8 Gas, Automatic, Works Good, Clean -Unit.

\$5,900



1972 Chevy C60 Bucket Truck, 41' Reach, V8 Gas, 5+2, PS, Outriggers, Insulated Upper & Lower Boom, Insulated Bucket, Jib, Works Good.

\$7,750



1988 Chev. Suburban-Silverado- 4x4; -350 EFI, Privacy Glass- Running Boards, Auto, CC, Pdi., RWD, Dual Air, Tilt, AT Tires, AM-FM Cassette, PW, 2 Captains Chairs, 8 Passenger Seating, 2 Tone Blue, 61-K Miles, New Inspection, AT Tires, 74 Codes In Glovebox.

\$14,700



1985 Ford E350 16 Passenger Bus, Dual Air, Dual Heat, 460 V8, Auto, Crome Bud Wheels, Radio, Dual Tanks, Current Inspection, Runs Good.

\$9,250

HOURS:
MON-FRI 7:30 To 5:00
SAT 7:30 To NOON

WENGERS INC.

251 SOUTH RACE STREET, MYERSTOWN, PA. 17067

PH: 717-866-2130 FAX 717-866-4300