



# Hog Markets

## New Holland Feeder Pigs

New Holland, PA  
Wed., November 13, 1991  
Report Supplied by Auction

770 HEAD.  
1'S AND 2'S, 20-29 LBS.  
110-120.00; 30-39 LBS. 74.00-82.00;  
40-49 LBS. 78.00-80.00; 50-59 LBS.  
70.00-73.00; 60-69 LBS. 67.00-70.00.  
2'S AND 3'S, 20-29 LBS. 85.00-100.00;  
30-39 LBS. 62.00-72.00; 40-49 LBS.  
60.00-67.00; 50-59 LBS. 71.00-75.00;  
60-69 LBS. 59.00-61.00.

## State Graded Feeder Pig Sale

at Carlisle Livestock Auction  
Friday, Nov. 8, 1991

RESULTS ON 1687 PIGS.  
COMPARED TO OCTOBER 25TH  
PIGS WERE MOSTLY STEADY TO 8.00  
LOWER. ALL PIGS WERE WEIGHED  
ON ARRIVAL AND SOLD BY THE  
HUNDRED WEIGHT.

US NO. 1&2'S: 1095 HD. 19 HD. 39 LB.  
81.00; 171 HD. 40-49 LB. 75.00-82.00; 436  
HD. 50-59 LB. 72.00-84.00; 367 HD. 60-69  
LB. 65.00-74.50; 102 HD. 70-90 LB.  
50.00-64.00.

US NO. 2'S: 443 HD. 176 HD. 29-49 LB.  
60.00-77.00; 249 HD. 50-70 LB.  
47.00-67.00; 18 HD. 75-99 LB.  
42.00-50.00.

US NO. 2&3'S: 102 HD. 75 HD. 28-49  
LB. 45.00-57.00; 27 HD. 50-59 LB.  
42.00-50.00.

AS IS & UTILITIES: 47 HD. 47 HD.  
30-80 LB. 42.50-47.00.

NEXT STATE GRADED FEEDER PIG  
SALE, FRIDAY, NOVEMBER 22, 1991,  
SALE 1:30 P.M., GRADING 7:30 UNTIL  
11:30 A.M.

## Peoria Hogs

Peoria, IL

Nov. 14, 1991

HOGS: 1800 TRADING FAIRLY  
ACTIVE. BARROWS AND GILTS  
OPENING WEAK TO .50 LOWER  
COMPARED WITH WEDNESDAY.  
SUPPLY MAINLY US 1-3 230-260 LBS.

US 1-3 220-250 LBS. 37.50-38.00, 90  
HEAD 38.25-38.50 2-3 230-260 LBS.  
37.00-37.50

SOWS: UNDER 500 LBS. STEADY  
TO MOSTLY .50 LOWER, OVER 500  
LBS. 1.00 LOWER 21%

US 1-3 325-500 LBS. MOSTLY 30.00,  
FEW 30.50 500-650 LBS. MOSTLY  
32.00, FEW 32.50

## State Graded Feeder Pig Sale

at Westminster  
Livestock Auction  
November 1, 1991

669 PIGS, 2 WEEKS AGO 784;  
DEMAND WEAK. PRICES 15.00-20.00  
PER HUNDRED LOWER.

GRADE 1 AND 2: 153 HEAD 39-49  
LBS. 60.00-68.00; 173 HEAD 52-58 LBS.  
64.00-75.00; 174 HEAD 60-69 LBS.  
58.00-67.00; 90 HEAD 70-75 LBS.  
59.00-65.00; 58 HEAD 82-90 LBS.  
50.00-53.00.

NEXT STATE GRADED SALE FRI-  
DAY, NOV. 15, 1:30 P.M.

## Lancaster Hogs

Lancaster Stockyards

Sat., Nov. 9, 1991

Report supplied by auction

372 HEAD.  
US 1 215-245 LBS. 43.50-44.50.  
US 1-2 215-245 LBS. 41.50-43.00.  
US 1-3 215-245 LBS. 39.50-41.50.  
US 2-4 215-255 LBS. 37.50-39.50.  
LIGHT HOGS 195-210 LBS.  
30.00-34.00; 180-195 LBS. 30.00-34.00;  
120-180 LBS. 30.00-40.00; 80-120 LBS.  
40.00-48.00; 50-80 LBS. 40.00-51.00;  
30-50 LBS. 40.00-62.00.  
GOOD SOWS: 30.00-32.75;  
MEDIUMS 27.50-30.00; THIN SOWS:  
24.00-27.00.  
BOARS (ALL WEIGHTS):  
23.50-25.00.

## New Holland Hog Auction

Lancaster, PA

NOVEMBER 11, 1991

HOG RECEIPTS

TODAY 940  
LAST MONDAY 901  
LAST YEAR 693

TREND: Compared to last Monday bar-  
rows and gilts steady, instances 25 higher.  
BARROWS AND GILTS: US 1-2  
210-245 lb 39.00-40.00, One lot 40.50.  
US 1 215-240 lb 43.00-44.25.  
US 1-3 210-260 lb 37.50-38.50.

## Indiana Hogs

Nov. 14, 1991

BARROWS AND GILTS: STEADY,  
INSTANCES .25-.50 LOWER.  
DEMAND MODERATE.

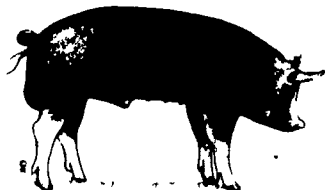
COUNTRY: PLANTS: US 1-2 220-260  
LBS. 36.50-38.00, 36.50-37.50 FEW  
DOWN TO 35.50-36.00. 210-220 LBS.  
34.00-36.00

US 1-3 220-260 LBS. 35.00-37.00  
SOWS: STEADY.  
US 1-3 300-500 LBS. 26.00-29.00  
500-650 LBS. 29.00-32.00  
TODAY'S PRELIMINARY ESTI-  
MATE: 23,000

## St. Louis Cattle, Hogs

Nov. 13, 1991

CATTLE & CALVES: 50 (50 SLTR, 0  
FDR)  
INSUFFICIENT VOLUME SLAUGH-  
TER CATTLE FOR A PRICE TEST.



# Hay & Grain Markets

## Diffenbach Auction Center

New Holland, Pa.

Monday, Nov. 11, 1991

Report Supplied by Auction

TOTAL LOADS: 140.  
ALFALFA: 72.00-160.00.  
MIXED HAY: 85.00-157.00.  
TIMOTHY: 92.00-150.00.  
ORCHARD GRASS: 98.00-102.00.  
STRAW: 79.00-100.00.  
EAR CORN: 83.00-110.00.  
CORN FODDER: 66.00.  
OATS: 2.15-2.25 BU.  
This sale was formerly held at the New  
Holland Sales Stables. It is now held at Dif-  
fenbach's New Holland Auction Center  
Ltd., 100 W. Jackson St., New Holland,  
across from the prior sale location. Auction  
time is 10:00 a.m. Monday.

## Kirkwood Hay Auction

Kirkwood, Pa.

Tuesday, November 12, 1991

Report Supplied by Auction

43 LOADS OF HAY.  
MIXED HAY: 70.00-96.00.  
TIMOTHY: 100.00-130.00.  
TIMOTHY AND CLOVER:  
131.00-141.00.  
ORCHARD AND ALFALFA MIX:  
141.00.  
ALFALFA: 1ST CUTTING  
92.00-120.00, 3RD CUTTING  
112.00-152.00, 4TH 83.00-106.00.  
CLOVER: 1ST CUTTING 112.00.  
GRASS: 96.00-110.00.  
WHEAT STRAW: 86.00-102.00.  
BARLEY STRAW: 90.00.  
OATS: 2.42 BU.  
PAPER BEDDING: 49.00.  
FIREWOOD: 37.00 LOAD.

## Green Dragon Hay

Ephrata, Pa.

Friday, November 8, 1991

Report Supplied by Auction

TOTAL LOADS: 114.  
MIXED HAY: 87.00-150.00.  
ALFALFA: 103.00-142.00.  
TIMOTHY: 95.00-132.00.  
CLOVER: 117.00.  
ORCHARD GRASS: 86.00-107.00.  
CORN FODDER: 54.00 AND 63.00.  
STRAW: 64.00-100.00.  
EAR CORN: 64.00-120.00.  
WOOD SHAVINGS: 1.60 BAG.  
SHREDDED PAPER: 42.00.  
OATS: 1.70-2.15 BU.  
FIREWOOD: 35.00 AND 40.00 LOAD.

## Good's Hay

Leola, Pa.

Wed., November 13, 1991

Report Supplied by Auction

TOTAL LOADS: 117.  
MIXED HAY 81.00-142.00.  
CORN: 73.00-97.00.  
TIMOTHY: 99.00-136.00.  
ALFALFA: 77.00-151.00.  
STRAW: 80.00-112.00.  
OATS: 2.35-2.45 BU.  
GRASS: 94.00-112.00.

## Pa. Grain

Nov. 12, 1991

Report supplied by PDA

COMPARED WITH LAST MON-  
DAY'S MARKET FOR  
SOUTHEASTERN, CENTRAL, AND  
SOUTH CENTRAL PA: CORN STEADY  
TO .10 LOWER; WHEAT STEADY TO  
.12 LOWER; BARLEY AND OATS  
MOSTLY STEADY; SOYBEANS  
STEADY TO .24 LOWER; NEW EAR  
CORN STEADY TO STRONG.  
SOUTHEASTERN PENNSYLVANIA  
CORN NO. 2-Y RANGE 2.55-2.90,  
AVERAGE 2.76; @WHEAT NO. 2  
RANGE 3.40-3.68, AVERAGE 3.48,  
FEW REPORTED CONTRACT FOR  
HARVEST 2.97-3.22; BARLEY NO. 3  
RANGE 1.75-2.15, FEW REPORTED  
1.65, AVERAGE 1.89, FEW REPORTED  
CONTRACT FOR HARVEST 1.60;  
OATS NO. 2 RANGE 1.40-1.70, AVER-  
AGE 1.57; SOYBEANS NO. 1 RANGE  
5.20-5.45, AVERAGE 5.36; FEW  
REPORTED GR. SORGHUM #2 RANGE  
2.50, AVERAGE 2.50; OLD EAR CORN  
RANGE 80.00-95.00, AVERAGE 87.50;  
FEW REPORTED NEW EAR CORN  
RANGE 62.00-80.00, AVERAGE 69.00.

## SOUTH CENTRAL PENNSYLVANIA

CORN NO. 2-Y RANGE 2.70-2.90,  
AVERAGE 2.84; @WHEAT NO. 2  
RANGE 2.90-3.50, AVERAGE 3.21;  
BARLEY NO. 3 RANGE 1.90-2.15,  
AVERAGE 2.00; OATS NO. 2 RANGE  
1.20-1.60, AVERAGE 1.43; FEW  
REPORTED SOYBEANS NO. 1 RANGE  
5.20-5.40, AVERAGE 5.30; OLD EAR  
CORN RANGE 80.00-95.00, AVERAGE  
86.75; FEW REPORTED NEW EAR  
CORN RANGE 75.00-85.00, AVERAGE  
80.00.

## SOUTHEASTERN, CENTRAL & SOUTH CENTRAL SUMMARY

CORN NO. 2-Y RANGE 2.58-2.90,  
AVERAGE 2.80; @ WHEAT NO. 2-Y  
RANGE 2.90-3.68, AVERAGE 3.32;  
BARLEY NO. 3 RANGE 1.75-2.15,  
AVERAGE 1.92; OATS NO. 2 RANGE  
1.30-1.70, AVERAGE 1.54; SOYBEANS  
NO. 1 RANGE 5.10-5.65, AVERAGE  
5.37; FEW REPORTED OLD EAR  
CORN RANGE 75.00-95.00, AVERAGE  
84.23; 44% PROTEIN BULK NEW EAR  
CORN RANGE 62.00-85.00, AVERAGE  
71.59.

CENTRAL PENNSYLVANIA  
CORN NO. 2-Y RANGE 2.70-2.90,  
AVERAGE 2.84; @WHEAT NO. 2  
RANGE 2.90-3.60, AVERAGE 3.20;  
FEW REPORTED BARLEY NO. 3  
RANGE 1.70-2.15, AVERAGE 1.88;  
OATS NO. 2 RANGE 1.45-1.70, AVER-  
AGE 1.56; SOYBEANS NO. 1 RANGE  
5.10-5.65, FEW REPORTED 5.85,  
AVERAGE 5.41; FEW REPORTED PER  
HUNDRED WEIGHT RECLEANED  
15% BUCKWHEAT RANGE 8.15,  
AVERAGE 8.15; OLD EAR CORN  
RANGE 75.00-85.00, AVERAGE 79.60;  
FEW REPORTED NEW EAR CORN  
RANGE 64.00-80.00, AVERAGE 69.40.  
WESTERN PENNSYLVANIA  
CORN NO. 2-Y RANGE 2.50-2.90,

AVERAGE 2.67; @WHEAT NO. 2  
RANGE 2.85-3.30, AVERAGE 3.13,  
BARLEY NO. 3 RANGE 1.85-1.90,  
AVERAGE 1.88; OATS NO. 2 RANGE  
1.40-1.60, FEW REPORTED 1.10,  
AVERAGE 1.49; FEW REPORTED PER  
HUNDREDWEIGHT RECLEANED 15%  
BUCKWHEAT NO. 1 RANGE 9.00,  
AVERAGE 9.00; OLD EAR CORN FEW  
REPORTED RANGE 66.00, AVERAGE  
66.00; FEW REPORTED NEW EAR  
CORN RANGE 50.00-55.00, AVERAGE  
52.50.

## MONTH AGO

CORN NO. 2-Y 2.80; @WHEAT NO.  
#2-Y 3.20; BARLEY NO. 3 1.84, OATS  
NO. 2 1.48; SOYBEANS NO. 1 5.45;  
FEW REPORTED OLD EAR CORN  
81.08; 44% PROTEIN BULK NEW EAR  
CORN 65.06.

## YEAR AGO

CORN NO. 2-Y 2.39; @WHEAT NO.  
#2-Y 2.72; BARLEY NO. 3 2.02; OATS  
NO. 2 1.35; SOYBEANS NO. 1 5.47,  
FEW REPORTED OLD EAR CORN  
69.00; FEW REPORTED OLD EAR  
CORN 69.00; FEW REPORTED NEW  
EAR CORN AVERAGE 55.95.

## Keister's Hay

Middleburg, PA

Tuesday, November 12

Report supplied by auction

31 LOADS.  
ALFALFA: 125.00-180.00.  
MIXED HAY: 95.00-180.00.  
STRAW: 5 LOADS, 105.00-130.00.  
EAR CORN: 7 LOADS, 110.00-130.00,  
NEW 95.00-105.00.  
TIMOTHY: 105.00-110.00.  
OATS: 5 LOADS, 2.10-2.30 BU.  
FIREPLACE WOOD: 9 LOADS,  
12.50-40.00 LOAD.

## Leinbach's Hay

Shippensburg, PA

November 9 and 12

Report Supplied by Auction

TOTAL LOADS: 76.  
ALFALFA: 77.00-160.00.  
MIXED HAY: 87.00-113.00.  
TIMOTHY: 80.00-130.00.  
CLOVER: 75.00-116.00.  
BROME GRASS: 102.00-118.00.  
ORCHARD GRASS: 70.00-115.00.  
STRAW: 65.00-85.00.  
EAR CORN: 80.00-125.00.  
CORN FODDER: 50.00.  
FIREWOOD: 26.00-40.00 PICK-UP  
LOAD.

## Belleville Hay

Wednesday, November 13

Belleville, PA

Report Supplied by Auction

TOTAL LOADS: 50.  
ALFALFA: 117.50-160.00.  
MIXED HAY: 87.50-155.00.  
STRAW: 100.00-117.50.  
EAR CORN: 100.00 AND 107.50.  
OATS: 2.15 BU.

## In this issue

Four Sections

### COLUMNS

Now is the Time.....A10  
Taking Time.....B 4  
On Being A Farm Wife.....B 7  
Microwave Magic.....B 5  
Have You Heard.....B14  
Ida's Notebook.....B15  
Livestock Notes.....B21-B23  
Farm Management.....C 3  
Swine Management.....C 9  
Poultry Pointers.....C10  
Flock Forum.....D 7

### DEPARTMENTS

Editorial.....A10  
Farm Calendar.....A10  
Farm Forum.....A10  
Mailbox Markets.....B26  
Sale Reports.....B35  
Public Auction Register.....B38  
Business News.....C 6  
Classified Ads.....C17

### FEATURES

Holiday Ideas.....B16  
SE Cattlemen.....C 4  
Poultry Association President...A32

### HOME AND YOUTH

Homestead Notes.....B 2  
Home On The Range.....B 6  
Cook's Question Corner.....B 8  
Farm Women Societies.....B 9,B15  
Kid's Korner.....B10  
4-H Happenings.....B17,B24, D 8  
FFA Happenings.....B18

### DAIRY

DHIA Focus.....A23  
MD Holstein Winner.....A36  
Huntingdon Co. DHIA.....C 5  
Juniata Co. DHIA.....D 3  
Perry Co. DHIA.....D 5

Walter M. Dunlap and Sons offers all cattle  
feeders two marketing days - Give us a call for  
advice and marketing conditions.

**MONDAYS OR WEDNESDAYS**

Consign With Us - For The Marketing Edge

Consign Your Beef Cows  
Mondays and Wednesdays

No Waiting To Unload - Good Weight Conditions

Next Feeder Cattle Sale  
Friday, Nov. 22 - 11:00 A.M.

Walter M. Dunlap and Sons

Lancaster Stockyards

Tel. (717) 397-5136

An Old Line Commission Firm Keeping  
Abreast With The Times

## KIRKWOOD HAY AUCTION

Hay, Straw and Grain Auction

EVERY TUESDAY

12:00

Located Rt. 472 5 miles  
south of Quarryville or 6  
miles north of Oxford cor-  
ner of Rt. 472 and Noble  
Road.

Lloyd H. Kreider,  
Auctioneer  
AU-000513L  
No out of state checks

## PIGS

STATE GRADED SALE  
FRI., NOV. 22  
1:30 P.M.

AT  
**Carlisle**

LIVESTOCK MARKET, INC.

Exit 12 Off I-81  
(717) 249-4511 or  
Evenings Jim, 249-2359