

Estimated Daily Livestock Slaughter

Under Federal Inspection

November 13, 1991

	CATTLE	CALVES	HOGS	SHEEP
WED., 11/13/91 (EST)	122,000	6,000	344,000	23,000
WEEK AGO (EST)	124,000	6,000	342,000	24,000
YEAR AGO (ACT)	124,000	7,000	327,000	23,000
WEEK TO DATE (EST)	333,000	15,000	963,000	65,000
SAME PD LT WK (EST)	344,000	17,000	1,022,000	66,000
SAME PD LT YR (ACT)	340,000	21,000	899,000	64,000

***REVISION CATTLE SLAUGHTER TUES., NOV. 12...125,000.

***REVISION HOG SLAUGHTER TUES., NOV. 12...354,000.

Westminster Livestock Auction

Hagerstown, Md.

Tuesday, November 12, 1991

Report supplied by auction

SLAUGHTER COWS: 110 HEAD, 1.50 LOWER. UTILITY 46.00-48.50; LOW DRESSING 42.00-46.00; HIGH DRESSING 49.00-50.00; CANNERS 40.00-44.00; SHELLY 39.00 AND DOWN.

BULLS: YG#1 1200-1900 LBS. 59.00-60.50; YG#2 51.00-57.50.

FED STEERS: 20 HEAD. HIGH CHOICE #3 1100-1300 LBS. 65.00-66.00; LOW CHOICE 62.00-64.00; SELECT 55.00-59.00; 2 HIGH CHOICE HOLSTEINS 1390 LBS. TO 62.00.

FED HEIFERS: 17 HEAD. CHOICE #3 950-1200 LBS. 60.00-62.00; SELECT 57.00-59.00; HOLSTEINS TO 50.75.

VEAL CALVES: CHOICE 160-300 LBS. 85.00-98.00; GOOD 73.00-84.00;

CULLS 85-110 LBS. 65.00-75.00; WEAK/ROUGH 60.00 DOWN.

FARM CALVES: 10.00-15.00 LOWER. HOLSTEIN BULLS #1 95-120 LBS. 120.00-137.00; 80-95 LBS. 85.00-115.00; HOLSTEIN HEIFERS 75-90 LBS. 76.00-95.00; BEEF X BULLS AND HEIFERS 95.00-117.00.

BUTCHER HOGS: 30 HEAD, 1.00 HIGHER. US#1-3 215-250 LBS. 36.00-37.25; 280-325 LBS. 32.00-36.00; 350-450 LBS. 30.00-32.00.

SOWS: 50 HEAD, GOOD DEMAND, 2.00-3.00 HIGHER. 300-500 LBS. 31.00-34.00; FEW TO 36.50; 500-700 LBS. 31.00-33.00.

BOARS: 5 HEAD. 300-600 LBS. 25.50. STOCK CATTLE: 348 HEAD, MOSTLY STEADY PRICES. STEERS 300-500 LBS. 76.00-89.00; 500-600 LBS. 68.00-80.00; 600-700 LBS. 64.00-76.00; 700-800 LBS. 65.00-75.00; 800-900 LBS. 64.00-73.00; 900-1000 LBS. 61.00-67.00.

HEIFERS: 300-500 LBS. 67.00-74.00; 500-700 LBS. 63.00-70.00; 700-900 LBS.

55.00-62.00, FEW TO 67.00.

BULLS: 200-400 LBS. 80.00-97.00; 400-600 LBS. 72.00-81.00; 600-700 LBS. 70.00-75.00; 800-950 LBS. 55.00-58.00.

LAMBS: 65 HEAD. CHOICE 100-120 LBS. 49.00-53.00; 80-95 LBS. 49.00-57.00; 60-80 LBS. 54.00-65.00; 45-60 LBS. 61.00-66.00.

SHEEP: 30 HEAD. 12.00-20.00; FEW 20.00-30.00.

GOATS: 37 HEAD. LARGE 57.00-98.00; MEDIUM 40.00-60.00; SMALL 22.00-36.00.

PIGS AND SHOATS: 170 HEAD. BY THE HEAD, 15-25 LBS. 10.00-21.00; 30-50 LBS. 24.00-32.00; 50-65 LBS. 22.00-30.00; BY THE POUND, 150-180 LBS. 32.00-39.00; 1 LOT 113 LBS. AT 41.00.

STOCK BOARS: 1 265 LB. AT 31.50.

Belknap Livestock Auction

Dayton, Pa.

Wednesday, November 13, 1991

Report Supplied by PDA

CATTLE 126...PDA...Compared with last Wednesday's market: Supply included 40 % feeder cattle. One Select slaughter steer 58.00, few Standard 55.00-55.50, one Choice Holstein 57.25, one Select 56.75. Few Breaking Utility and Commercial slaughter cows low dressing and low yielding 37.50-43.00, Cutter and Boning Utility 40.00-44.75, low dressing 38.00, Canner and low Cutter 33.00-39.50, Shells down to 25.00. Couple Yield Grade No. 1, 1455 & 1515 lbs. sl. bulls 52.00 & 52.75, few No. 2, 1100/1385 lbs. 44.75-50.50. FEEDER CATTLE: Medium Frame No. 1, 315/555 lbs. steers 62.50-72.50, few, 740/900 lbs. 55.00-61.75. Medium and Large Frame No.1, 400/500 lbs. heifers 60.00-63.50. Medium Frame #1, 405/600 lbs. bulls 60.00-65.50, Medium and Large

Frame #2, 335/745 lbs. 47.00-56.50.

CALVES 144... Supply included 85% sold to returned to farm ...Standard and Good 60/95lbs. wealers 56.00-75.00. Farm Calves: No. 1, Holstein Bulls 85/140 lbs. 100.00-137.00, few 75/80 lbs. 75.00-102.00, No. 2, 85/120 lbs. 87.00-113.00; No. 1, Hol. Heifers 90/120 lbs. 100.00-170.00. Beef cross 80/130 lbs. bulls & heifers 90.00-140.00.

HOGS 198...Barrows and gilts: Strong to .25 higher. Lot US No. 1-2 250 lbs. barrows and gilts 41.50, 1-3 225/260 lbs. 36.20-37.10, lot 38.40, 2-3 260/275 lbs. 35.30-36.10, few small lots 37.00-40.50. Sows: Mostly 1.00 lower. US No. 1-3 300/695 lbs. sows 29.25-31.00, one 34.75, few 2-3 305/415 lbs. 26.50-29.25. Boars 22.00-25.00; couple stock boars 34.00 & 44.00.

FEEDER PIGS 72...US No. 1-3 20/35 lbs. feeder pigs 9.00-17.50, 35/45 lbs. 17.50-23.50. - all per head.

SHEEP 10...Few Good and Choice 70/110 lbs. sl. lambs 30.00-36.50. Few Slaughter sheep 10.00-14.00. - all Cwt.

GOATS 25. Few Large 32.00-40.00, Medium 12.50-22.00, and Small 5.00-15.00 - all per head.

Frederick Livestock Auction

Frederick, Md.

Monday, November 11, 1991

Report Supplied by Auction

SLAUGHTER COWS: UTILITY 46.00-49.00; LOW DRESSING 44.00-46.00; HIGH DRESSING FEW TO 50.50; CANNERS 42.00-45.00; SHELLY 42.00 DOWN.

BULLS: YG#2 1400-1700 LBS. 53.00-57.50.

FED STEERS: NO SELECT OR CHOICE; STANDARD HOLSTEIN 52.00-54.00; 2 HOLSTEIN X 58.00-61.50.

FED HEIFERS: FEW OFFERED.

VEAL CALVES: CHOICE 150-300 LBS. 85.00-92.00; GOOD 75.00-85.00; CULLS 85-110 LBS. 75.00-82.00; 50-80 LBS. 65.00-75.00; WEAK/ROUGH 60.00 DOWN.

FARM CALVES: HOLSTEIN BULLS #1 95-120 LBS. 120.00-140.00; FEW 125-140 LBS. 100.00-115.00; 80-90 LBS. 90.00-120.00; HOLSTEIN HEIFERS 95-125 LBS. 120.00-167.00; 75-90 LBS. 85.00-125.00.

BUTCHER HOGS: HIGHER PRICES. US#1-2 220-260 LBS. 38.00-38.50; US#1-3 240-260 LBS. SEVERAL TO 37.50; FEW SMALL LOTS 200-300 LBS. 40.00-44.00; 6 HEAD 300 LBS. AT 36.50.

SOWS: 400-580 LBS. 33.00-34.00; 3 HEAD 36.00-39.50; 3 HEAD 617 LBS. AT 30.00.

BOARS: 400-700 LBS. 22.00-23.00. STOCK CATTLE: STEERS FEW 400 LBS. 69.00-75.00.

HEIFERS: 300-450 LBS. 65.00-74.00. BULLS: 300-480 LBS. 67.00-77.00; 1 275 LB. AT 80.00; 1 HERF. 975 LBS. AT 57.50.

SHEEP: FEW OFFERED. PIGS AND SHOATS: BY THE HEAD, RUPTURES 10-40 LBS. 6.00-14.00.

STOCK BOARS: 200-300 LBS. 30.00-32.00; 300-350 LBS. 25.00-26.50.



Morrison Cove Livestock

Martinsburg, Pa.

November 11, 1991

Report supplied by auction

CATTLE: 294. STEERS CHOICE 67.50-69.00; GOOD 65.00-66.25.

HEIFERS: CHOICE 70.00-72.25; GOOD 63.00-66.25.

COWS: UTILITY AND COMMERCIAL 47.00-49.50, CANNER AND LOW CUTTER 34.00-46.00.

BULLOCKS: GOOD AND CHOICE 60.00-61.10.

BULLS: YG#1 55.00-62.00.

FEEDER CATTLE: STEERS 70.00-79.00, BULLS 65.00-75.00, HEIFERS 55.00-71.00.

CALVES: 298. PRIME NO MKT. TEST; CHOICE 85.00-89.00; GOOD 81.00-84.00; STANDARD AND GOOD 74.00-79.00; HOLSTEIN BULLS 90-130 LBS. 125.00-145.00; HOLSTEIN HEIFERS 90-130 LBS. 140.00-163.00.

HOGS: 99. US#1-2 38.00-39.25, US#1-3 36.50-38.00.

SOWS: US#1-3 30.00-33.00.

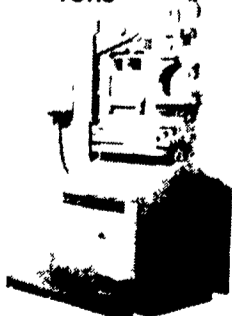
BOARS: 26.00-30.00. FEEDER PIGS: 67. US#1-3 20-50 LBS. 12.00-20.00 PER HD.

SHEEP: CHOICE 41.00-43.00; GOOD 37.00-40.00; SLAUGHTER EWES 10.00-18.00

GOATS: 12.00-41.00

UNI-HYDRO IRONWORKER

35 to 120 Tons



Selling: Scotchman Uni-Hydra Mubea



DAVID S. KING

873 S. Railroad St.

Myerstown, PA 17067

Answering Service

(717) 866-6556



A Tradition Of Quality From Start To Finish

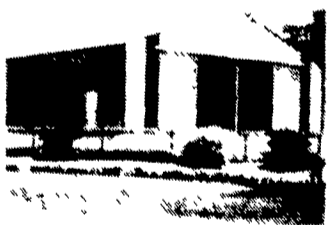
represents Durability, Value, Flexibility, and Support built into every building system. We design

215-445-7897



CALL US TO LEARN HOW WE DO IT AND WHAT WE CAN DO FOR YOU!

AGRICULTURAL BUILDINGS



HORSE BARN



SPECIALTY BUILDINGS



Adaptability

Durability

Economy



LIGHT INDUSTRIAL/COMMERCIAL BUILDINGS

