

Westminster Hay

Westminster, Md.
 Tuesday, November 12, 1991
 Report Supplied by Auction
 TOTAL LOADS: 92.
 ALFALFA: 1.60-2.70 BALE.
 ALFALFA MIX: 1.50-1.80 BALE.
 TIMOTHY: 1.47.00, 1.40-2.70 BALE.
 TIMOTHY MIX: 1.60-2.20 BALE.
 CLOVER HAY: 1.45-1.55 BALE.
 ORCHARD GRASS: 1.40-1.75 BALE.
 STRAW: 62.50, 1.00-1.90 BALE.
 EAR CORN: 77.50.
 WOOD: 42.00-72.50 CORD.

Shenandoah Valley Livestock

Harrisonburg, Va.
 November 9, 1991
 Report supplied by auction
 STEERS: M&L-1 300-500 LBS. 90.00-108.00; 500-700 LBS. 75.00-90.00; 700-1000 LBS. 66.00-75.00; HOLSTEIN 300-1000 LBS. 57.00-85.00.
 S-L & M&L-2: 300-500 LBS. 83.00-90.00; 500-700 LBS. 67.00-80.00; 700-1000 LBS. 62.00-74.00.
 HEIFERS: M&L-1 300-500 LBS. 68.00-82.50; 500-700 LBS. 60.00-76.00; 700-1000 LBS. 60.00-71.00.
 S-L & M&L-2: 300-500 LBS. 60.00-65.00; 500-700 LBS. 55.00-65.00.
 STOCK COWS: BEEF PAIRS 730.00-800.00, SINGLES 415.00-500.00.
 BABY CALVES: HEAD 30.00-95.00,

BY CWT. 84.00-110.00.
 SLAUGHTER COWS: UTILITY AND COMMERCIAL 2-4 35.00-44.75; CANNERS AND CUTTERS 1-3 32.00-36.00.
 SLAUGHTER BULLS 1 & 2 45.00-54.50.
 LAMBS: BLUE O HIGH CHOICE AND PRIME 45.15; RED O CHOICE 42.00; FEEDER LAMBS CHOICE 44.75-47.75; SLAUGHTER EWES 10.00-20.00.
 HOGS: US1-3 200-240 LBS. 35.00.

S.W. Virginia Livestock

Hollins - Roanoke, VA
 Nov. 11, 1991
 SLAUGHTER CATTLE 84 HEAD - NO TRENDS REPORTED.
 SLAUGHTER COWS 78 HEAD COWS CUTTER & BONING UT. 1-3 38.00 - 45.50 BREAKING UT. & COMM. 2-4 39.00 - 46.00 CANNER AND LOW CUTTER 1-2 33.00 - 40.00
 SLAUGHTER BULLS 6 HEAD BULLS Y.G. 1-2, 1300-1600 LB. 49.00 - 52.00 Y.G. 1-2, 1600 LBS. & OVER 49.00 - 58.25
 FEEDER CATTLE 550 HEAD - NO TRENDS REPORTED STEERS MEDIUM 1 LARGE 1 SMALL 1 MED & LARGE 2 200-300 92.00-101.00 - 87.00-93.00 300-400 85.00- 92.00 87.00- 95.00 75.00- 83.00 82.00- 87.00 400-500 82.00- 87.00 84.00- 89.00 73.00- 77.00 75.00- 82.00 500-600 80.00- 88.00 85.00- 91.00 69.00- 74.00 73.00- 81.00 600-700 77.00- 79.00 78.00- 80.00 65.00- 71.00 68.00- 74.00 700-800 74.00- 78.50 75.00- 78.00 -

- 800-900 68.00- 69.50 - - - HOLSTEIN STEER MED & LARGE 2 300- 500 72.00- 78.00 500- 700 68.00- 75.50 700- 900 60.75- 62.00
 HEIFERS MEDIUM 1 LARGE 1 SMALL 1 MED & LARGE 2 300-400 74.00- 77.50 - 65.00- 72.00 70.00- 75.00 400-500 73.00- 82.00 76.00- 83.00 64.00- 70.00 67.00- 74.00 500-600 70.00- 76.00 73.00- 76.50 62.00- 66.00 65.00- 71.00 600-700 68.00- 72.00- 59.00- 64.00 63.00- 67.00 700-800 67.00- 72.00 - - 59.00- 64.00 800-900 62.00- 65.00 - - 55.00- 61.00 BULLS MEDIUM 1 MED & LARGE 2 300-400 83.00- 88.00 75.00- 82.00 400-500 79.00- 86.00 74.00- 80.00 500-600 75.00- 80.00 70.00- 75.00 600-700 69.00- 70.00 - COWS WITH CALVES AT SIDE 5 PAIR; M&L-1, FEW 2, 5-8 YRS OLD 900-1050 LBS WITH CALVES 95-250 LB^s \$605.00-800.00 PER PAIR. BAB CALVES RETURNED TO FARMS 2 HEAD NEWBORN TO 4 WK OLD \$50.00-152.00 MOSTLY \$75.00-120.00 PER HEAD.

Dewart Livestock

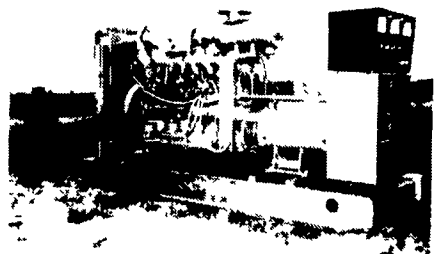
Dewart, Pa.
 November 11, 1991
 Report Supplied by PDA
 STEERS: 52.00-62.00.
 HEIFERS: 48.00-64.00.
 GOOD COWS: 45.00-52.00.
 CANNERS AND CUTTERS: 35.00-45.00.
 BULLS: 50.00-62.00.
 VEAL: 90-190 LBS. 99.00-182.00; 70-90 LBS. 60.00-99.00.
 HOGS: 36.00-40.50.
 SOWS: 35.00-38.00.
 FEEDER PIGS: 15.00-28.00 HD.

Leola Produce Auction

Leola, PA
 November 12, 1991
 Report Supplied by Auction
 APPLES: ASSORTED VARIETIES 3.50-7.00 1/2 BU.
 BROCCOLI: 6.50-14.00 12-14 CT.
 CAULIFLOWER: 55-1.20 HEAD.
 CABBAGE: GREEN 3.75-7.00 CRATE, 22-43 HEAD; RED 4.50-7.50 CRATE, 22-40 HEAD.
 CIDER: 1.20-1.50 GAL.
 CARROTS: 1.50-2.00 10 LBS. LOOSE.
 ENDIVE: 9.00-9.50 12 CT. CRATE.
 ONIONS: BUNCHED 12.00-16.00 32 CT.
 POTATOES: NEW RED AND WHITE 5.00-6.50 50 LBS. #1.
 PUMPKINS: NECK .30-.80 EACH.
 RADISHES: 5.00-7.75 20 CT. BUNCH.
 RED BEETS: LOOSE 3.55-6.50 1 1/9 BU.
 SPINACH: 11.00-13.00 13-15 LBS. CRATE.
 SWEET POTATOES: 7.00-12.00 1 1/9 BU.
 ACORN AND BUTTERNUT SQUASH: 3.00-6.00 1 1/9 BU.
 TOMATOES: LARGE TO EXTRA LARGE 10.00-17.00 25 LBS. #1, SMALL TO MEDIUM 5.00-10.00 #1.
 TURNIPS: 2.75-5.25 25 LB. POLYBAG.
 WINTER RADISH: 3.25-4.50 25 LB. POLYBAG.
 ENGLISH WALNUTS: 4.25-7.50 1/2 BU.
 NOTICE: SALE DAYS NEXT WEEK ARE TUES. AND THURS. ONLY, 10 A.M.

Belleville Livestock Auction

Belleville, Pa.
 Wednesday, November 13, 1991
 Report Supplied by PDA
 CATTLE 120... PDA ...Compared with last Wednesday's market: Breaking Utility and Commercial slaughter cows 42.50-46.50, Cutter and Boning Utility 43.00-47.00, Canner and low Cutter 38.50-43.00, Shells down to 36.50. Few Yield Grade No. 1, 1395/1625 lbs. slaughter bulls 55.25-57.00. Feeder Cattle: Few Medium Frame No.1, 350/400 lbs. Heifers 60.00-64.50.
 CALVES 94...Few Standard and Good 75/95 lbs. vealers 70.00-75.00, Utility 50/80 lbs. 52.00-65.00. FARM CALVES: No. 1, 90/125 lbs. Holstein bulls 100.00-120.00, couple 132.50, No. 2, 80/125 lbs. 80.00-100.00. Few No. 1, 80/100 lbs. Holstein heifers 87.50-155.00.
 HOGS 175...Barrows and gilts: US No.1-2, 225/250 lbs. barrows and gilts 38.25-39.25, 1-3 245/260 lbs. 37.25-37.75, 2-3 250/330 lbs. 37.00-38.35. Few US No 1-3 380/525 lbs. sows 35.00-35.50. Few Boars 25.00-30.50.
 FEEDER PIGS 287...US 1-3 20/35 lbs feeder pigs 15.50-21.50, 35/50 lbs 20.50-28.50, 65/100 lbs. 31.00-36.00. Few lots Utility 10/25 lbs. 11.00-13.50. --- all per head.
 SHEEP 33...Few Good and Choice 45/60 lbs. woolled slaughter lambs 50.00-75.00. Slaughter sheep 12.00-16.00 - all Cwt.
 GOATS 13...Few Medium and Large 40.00-50.00. --- all per head.
 HOLSTEIN DAIRY COWS - \$670.00-1220.00 --- PER HEAD.



GENERATORS

Sales ★ Service ★ Rentals
 * Complete Generator Systems
 * PTO * Portables * 2-1600 KW
 "We Service It If You Have It And Sell It If You Need It"

34 W. Mohler Church Rd.
 Ephrata, PA 17522

Tel: 717-738-0300
 Fax: 717-738-4329



1st Sale
 Wed., Dec. 4th!

Receiving Tobacco Mon. & Tues.

NOTE: Let's try and get the floor filled for the first sale to establish a good market. This is the day decisions are made by large companies on prices.

ATTENTION TOBACCO FARMERS

GRADE YOUR TOBACCO! IT WILL REPAY YOU!

Watch Our Upcoming Newsletter For Sorting Tips

FOR SALE

3 Compartment Pneumatics or Handyman jack

TOBACCO PRESSES
 (Delivery Arrangements Available.)

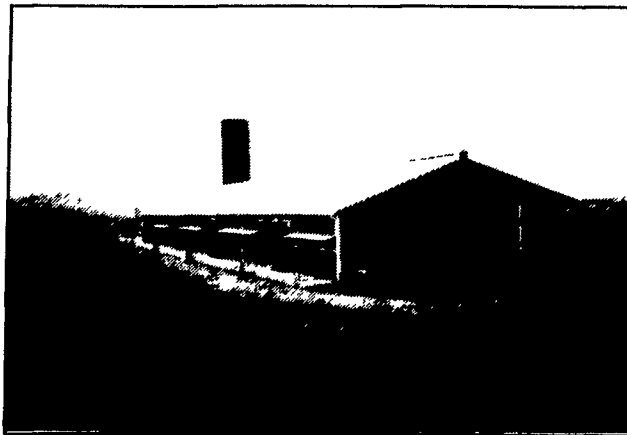
LATHE HOLDERS

Good Price On COTTON TWINE

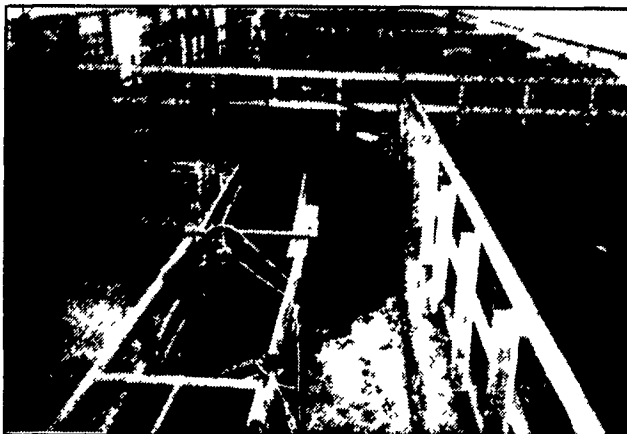
PARADISE

TOBACCO SALES
 717-687-0990

Concrete Slatted Beef Barns



- Concrete slats for all the right reasons.
- Lower production costs.
- Cleaner and drier animals.
- Higher concentration of animals.
- Ease of waste collection and storage.



Available in slot sizes:

Short core 1 3/4 "x4"

OR

Long core 1 3/4 "x9"

Other Products:

- H&J Bunks
- Hog & Cattle Slats
- Bunker Silo
- Concrete Hog Penning
- Concrete Post & Beams

Give us a call for more information on hog, beef, dairy and heifer barns.



477 East Farmersville Road
 New Holland, PA 17557
 (717) 355-2361

